

CLOSE *to my* HEART®

NOVEMBER–DECEMBER 2021





As a fan of musical theater, I have always loved *The Sound of Music*. The joyful “My Favorite Things” has been a holiday classic for many years, and it always brings a smile to my face when I hear it. If you’ve heard the song—and surely you have—you’ll know that the lyrics list a series of simple, everyday things like raindrops on roses and whiskers on kittens.

I imagine that you, like me, have many of your own simple, everyday things that can cheer you up “when you’re feeling sad.” Things like the smell of new paper packets, the feel of a crisp new stamp set, or the bright, beautiful colors of a new stamp pad. These simple elements of creativity are a few of my favorite things, and I bet they are a few of yours, too!

This year, I hope you have a wonderful holiday season filled with creativity, love, joy, and more than a few of your favorite things!

Sincerely,

Jeanette R. Lynton | FOUNDER & CEO

CATALOG:

CONTENTS

NOVEMBER 2021–DECEMBER 2021

2 Craft with Heart™

04 PAPER COLLECTIONS

4 Candid Moments

14 Wonderland

24 Mix-in

26 MY ACRYLIX® STAMP SETS

42 THIN CUTS & MORE

43 STAMP OF THE MONTH

43 November

44 December

STATEMENT:

OUR MISSION

We show you how to celebrate
relationships through
discovering your creativity,
to preserve and share
the moments that matter most.

THIN CUTS COMPATIBLE

Corresponding stamp images are
shown in solid shapes. Use with your
favorite die-cutting machine.





ENJOY EVEN MORE REWARDS AS A CLOSE TO MY HEART MAKER!

- earning potential starts with 25% commission on product orders
- shopping website for easy online ordering
- exciting incentive programs, including trips, free products, and more
- early product previews and exclusive events

BECOME A MAKER

Maker
CLOSE TO MY HEART

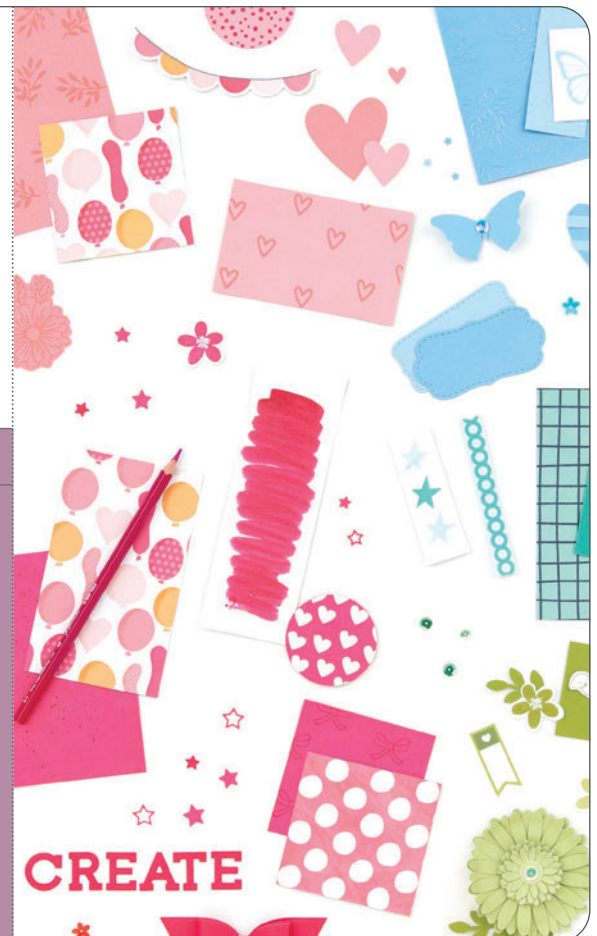


BECOME A VIP

WHEN YOU BECOME A VIP CUSTOMER WITH CLOSE TO MY HEART, YOU CAN:

- earn 15% credit to use on future orders
- receive a FREE stamp set each month with qualifying purchase
- get access to exclusive offers and specials

WHEN YOU JOIN, YOU'LL ALSO RECEIVE AN INSTANT SIGN-UP BONUS CREDIT TO USE ON YOUR FIRST ORDER!





CRAFT WITH HEART™ SCRAPBOOKING

Choose between 4-month and 12-month subscriptions and get regular deliveries of exclusive Cut Above® layout kits for as little as \$15.96 per kit! The artwork shown here is for the September–December subscription kits.

Visit closetomyheart.com/craft-with-heart to learn more.

SEPTEMBER:



OCTOBER:



NOVEMBER:



DECEMBER:





CRAFT WITH HEART™ CARDMAKING

Receive a new cardmaking kit featuring an exclusive stamp set and a variety of Cut Above® card designs every 4 months. Subscribe for 4-month or 12-month periods for as little as \$43.95 per kit! The artwork shown here is for the September–December subscription kit.

Visit closetomyheart.com/craft-with-heart to learn more.

Candid MOMENTS



12" x 12"

PAPAYA

PEACH

SUNDANCE

CAROLINA

SAPPHIRE

MOCHA

MINK

FRENCH VANILLA

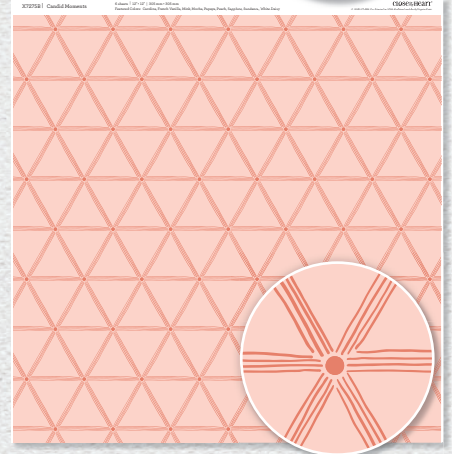
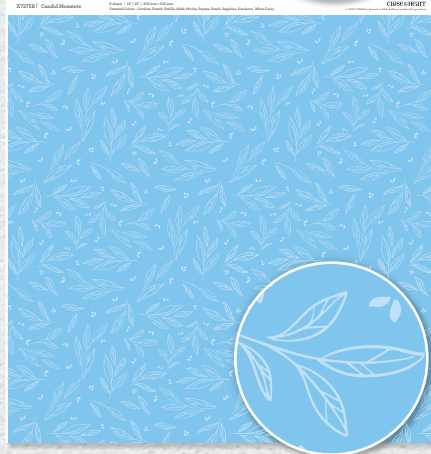
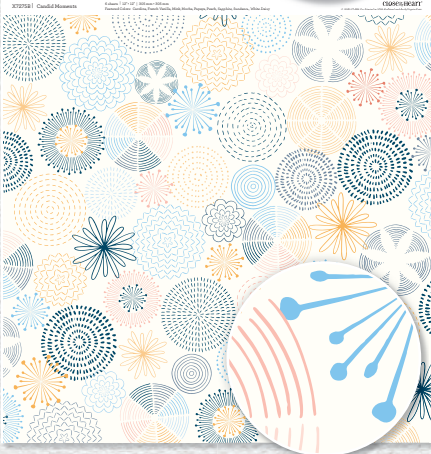
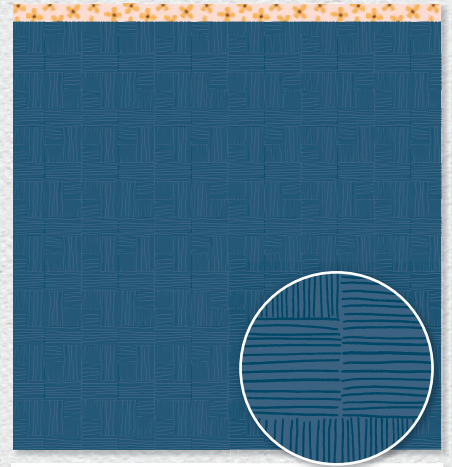
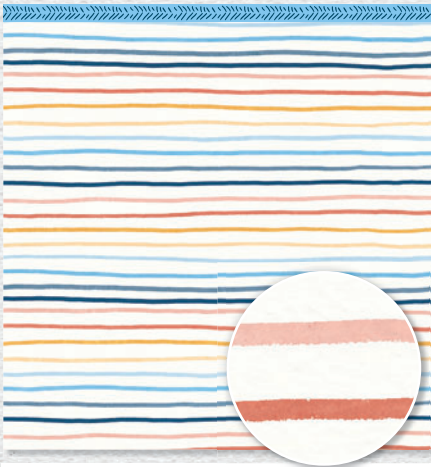
WHITE DAISY



Everyday Life



STICKER SHEET



CANDID MOMENTS PAPER PACKET + STICKER SHEET

\$9.95 [X7275S]

6 sheets, 2 each of 3 double-sided designs, and 1 coordinating sticker sheet; 12" x 12" plus ½" zip strip on paper.

CANDID MOMENTS PAPER PACKET

\$6.95 [X7275B]

6 sheets, 2 each of 3 double-sided designs; 12" x 12" plus ½" zip strip.

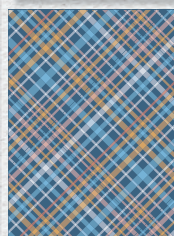
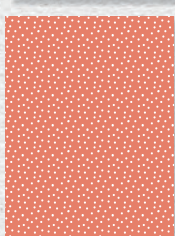
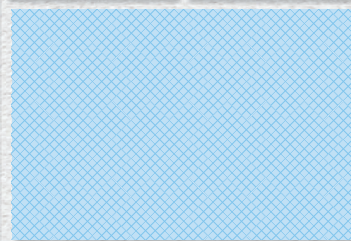
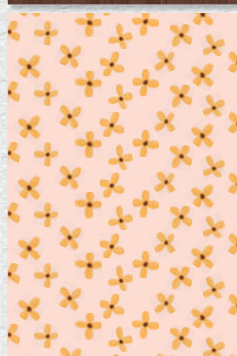
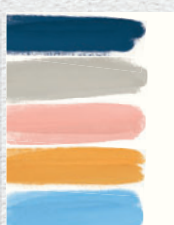
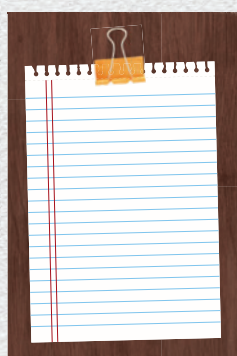
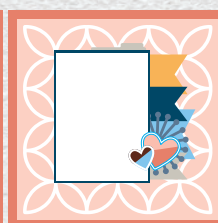
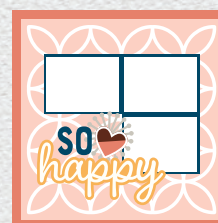
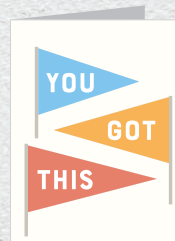
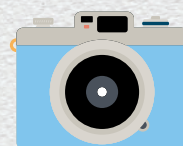
COORDINATING CARDSTOCK



DIE-CUTS



DIGITAL ART COLLECTION



PICTURE MY LIFE™ CARDS

CANDID MOMENTS COORDINATING CARDSTOCK**\$9.95 [X7275C]**

12 sheets, 2 each of French Vanilla, Sundance, Sapphire, Carolina, Peach, and Papaya; 12" x 12".

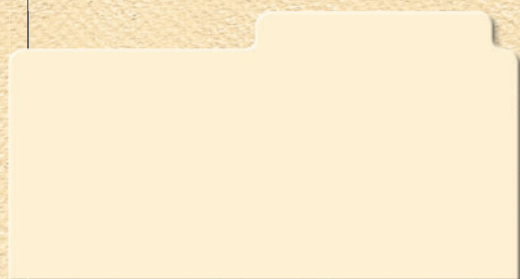
CANDID MOMENTS DIE-CUTS**\$4.95 [X7275E]**

1 sheet of coordinating chipboard die-cuts; 6" x 12".

CANDID MOMENTS DIGITAL ART COLLECTION**\$9.95 [X7275F]**Cut a variety of shapes that coordinate with the Candid Moments paper collection. *Not all designs shown.***CANDID MOMENTS PICTURE MY LIFE™ CARDS****\$7.95 [X7275D]**24 double-sided pocket cards featuring unique designs, sentiments, and icons. 12 each of 4" x 6" and 3" x 4". *Not all designs shown.*



STAMPS:



just sending

thinking of

miss you my



CANDID MOMENTS—CARDMAKING STAMP + THIN CUTS \$24.95 [Z4394]

STAMP ONLY \$14.95 [C1920]

39 stamps; recommended blocks: 1" x 1" (Y1000), 1" x 1½" (Y1016), 2" x 2" (Y1003), 2" x 3½" (Y1009)



12" x 12"



CANDID MOMENTS—SCRAPBOOKING STAMP + THIN CUTS \$36.95 [Z4395]

STAMP ONLY \$18.95 [D2065]

16 stamps; recommended blocks: 1" x 1" (Y1000), 1" x 3½" (Y1002), 2" x 2" (Y1003), 2" x 3½" (Y1009), 2" x 6½" (Y1010)



The workshop instructions include steps that guide you in embellishing your pages with optional sponging techniques. See what additional supplies are needed for these techniques on the next page.





KIT CONTENTS:

CANDID MOMENTS SCRAPBOOKING

Use the materials in this kit to create 3 coordinating 12" x 12" two-page layouts.

WORKSHOP KIT \$39.95 [G1243]

WORKSHOP KIT WITHOUT MEMORY PROTECTORS™ \$34.95 [G1243NP]

KIT CONTENTS:

- 1 – Candid Moments Paper Packet + Sticker Sheet (X7275S)
- 5 – cardstock sheets (2 Papaya, 1 Sundance, 2 French Vanilla)
- 2 – exclusive patterned paper sheets; 12" x 12"
- 4 – exclusive printed die-cut sheets; 12" x 12"
- 1 – exclusive Peach cardstock die-cut sheet; 12" x 12"
- 1 – Candid Moments Die-cuts (X7275E)
- 4 – Top-load 12" x 12" Memory Protectors™ (not included in G1243NP)
- photo placeholders & printed instructions



ADDITIONAL SUPPLIES NEEDED:

3-D FOAM TAPE
\$6.50 [Z1151], P. 93*

BLACK JOURNALING PEN (.01) (OPTIONAL)
\$3.50 [Z3515], P. 82*

CAROLINA EXCLUSIVE INKS™ STAMP PAD (OPTIONAL)
\$9.95 [Z6505], P. 110*

PAPAYA EXCLUSIVE INKS™ STAMP PAD (OPTIONAL)
\$9.95 [Z6534], P. 110*

ROUND SPONGE (OPTIONAL)
\$1.95 [Z697], P. 91*



STAMPS:



KIT CONTENTS:



CANDID MOMENTS CARDMAKING WORKSHOP KIT \$31.95 [G1244]

Use the materials in this kit to create 16 cards, 4 each of 4 designs.
Featured Technique: Adding Color with Watercolor Paints

KIT CONTENTS:

- 1 – exclusive B-size stamp set + coordinating Thin Cuts*
- 2 – Candid Moments patterned paper sheets
- 5 – cardstock sheets (1 Papaya, 1 Carolina, 1 Sapphire, 1 Sundance, 1 French Vanilla)
- 1 – set of exclusive white acrylic flowers
- 16 – white card bases & envelopes
- printed instructions

15 stamps; recommended blocks: 1" x 1" (Y1000), 1" x 1½" (Y1016), 2" x 2" (Y1003), 3" x 3" (Y1006)



*die-cutting machine required for Thin Cuts

ADDITIONAL SUPPLIES NEEDED:

**PAPAYA EXCLUSIVE INKS™
STAMP PAD**
\$9.95 [Z6534], P. 110*

**SAPPHIRE EXCLUSIVE INKS™
STAMP PAD**
\$9.95 [Z2848], P. 110*

**INTENSE BLACK EXCLUSIVE INKS™
STAMP PAD**
\$9.95 [Z4189], P. 89*

WATERCOLOR PAINTS
\$12.95 [Z3132], P. 78*

SMALL ROUND WATERBRUSH
\$6.50 [Z3224], P. 78*

THIN 3-D FOAM TAPE
\$6.50 [Z2060], P. 93*

GLUE DOTS® MICRO DOTS
\$7.50 [Z2089], P. 92*

wonderland



12" x 12"

SIMPLY THE BEST

DESERT ROSE

PEACH

MULBERRY

WISTERIA

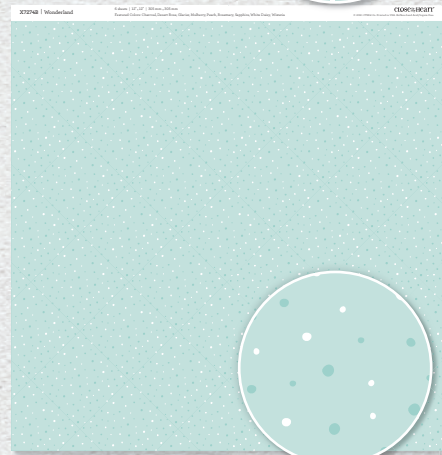
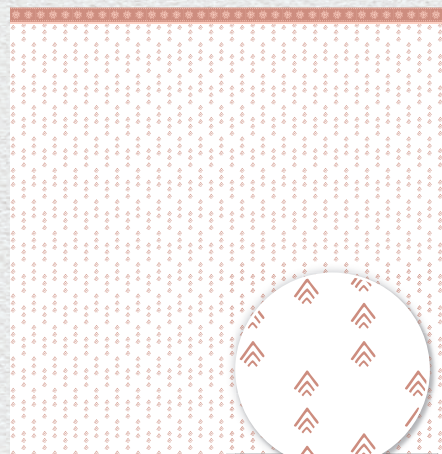
SAPPHIRE

GLACIER

ROSEMARY

CHARCOAL

WHITE DAISY



WONDERLAND PAPER PACKET + STICKER SHEET

\$9.95 [X7274S]

6 sheets, 2 each of 3 double-sided designs, and 1 coordinating sticker sheet; 12" x 12" plus ½" zip strip on paper.

WONDERLAND PAPER PACKET

\$6.95 [X7274B]

6 sheets, 2 each of 3 double-sided designs; 12" x 12" plus ½" zip strip.



WONDERLAND COORDINATING CARDSTOCK

\$9.95 [X7274C]

12 sheets, 2 each of White Daisy, Charcoal, Glacier, Wisteria, Mulberry, and Peach; 12" x 12".

WONDERLAND FELT SHAPES

\$5.95 [X7274E]

10 adhesive-backed felt shapes in assorted colors.

WONDERLAND DIGITAL ART COLLECTION

\$9.95 [X7274F]

Cut a variety of shapes that coordinate with the Wonderland paper collection. *Not all designs shown.*

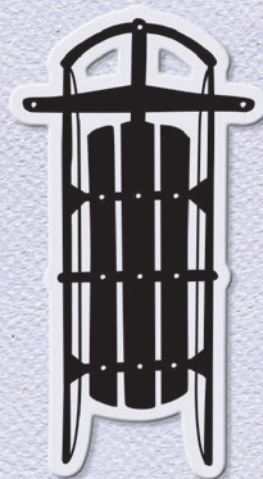
WONDERLAND PICTURE MY LIFE™ CARDS

\$7.95 [X7274D]

24 double-sided pocket cards featuring unique designs, sentiments, and icons. 12 each of 4" x 6" and 3" x 4". *Not all designs shown.*



STAMPS:



MISS YOU



WARM WISHES



WONDERLAND—CARDMAKING STAMP + THIN CUTS \$26.95 [Z4337]

STAMP ONLY \$14.95 [C1910]

13 stamps; recommended blocks: 1" x 1" (Y1000), 1" x 3½" (Y1002), 2" X 2" (Y1003), 2" x 3½" (Y1009)



12" x 12"



STAMPS:

It's a
HOT COCOA
kind of
DAY



FROM THE HEART



SIMPLE JOYS

Winter
wonderland

HOME
life



WONDERLAND—SCRAPBOOKING STAMP + THIN CUTS \$36.95 [Z4389]

STAMP ONLY \$18.95 [D2058]

11 stamps; recommended blocks: 1" x 1" (Y1000), 1" x 3½" (Y1002), 2" x 2" (Y1003), 4" x 4" (Y1017)



The workshop instructions include steps that guide you in an optional embellishing technique using gloss spray. See what additional supplies are needed for this technique on the next page.





KIT CONTENTS:

WONDERLAND SCRAPBOOKING

Use the materials in this kit to create 3 coordinating 12" x 12" two-page layouts.

WORKSHOP KIT \$39.95 [G1241]

WORKSHOP KIT WITHOUT MEMORY PROTECTORS™ \$34.95 [G1241NP]

KIT CONTENTS:

- 1 – Wonderland Paper Packet + Sticker Sheet (X7274S)
- 7 – cardstock sheets (2 Desert Rose, 1 Peach, 2 Wisteria, 1 Glacier, 1 Rosemary,)
- 2 – exclusive patterned paper sheets; 12" x 12"
- 4 – exclusive printed die-cut sheets; 12" x 12"
- 1 – exclusive Wisteria cardstock die-cut sheet; 4" x 12"
- 1 – set of exclusive adhesive-backed dots
- 4 – Top-load 12" x 12" Memory Protectors™ (not included in G1241NP)
- photo placeholders & printed instructions



ADDITIONAL SUPPLIES NEEDED:

THIN 3-D FOAM TAPE
\$6.50 [Z2060], P. 93*

QUICKIE GLUE™ PEN
\$4.95 [Z1512], P. 93*

WHITE GLOSS SPRAY
(OPTIONAL)
\$6.95 [Z5010], P. 85*

CORAL PINK LEPEN™
(OPTIONAL)
\$3.95 [Z1502], P. 82*

TEAL LEPEN™
(OPTIONAL)
\$3.95 [Z1505], P. 82*

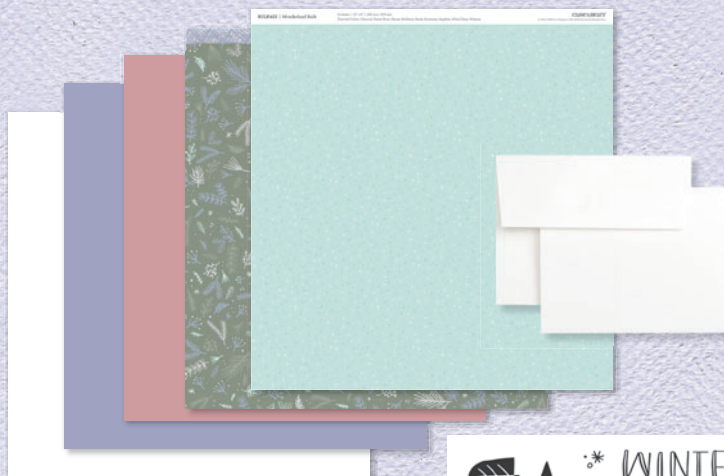
BLACK JOURNALING PEN (.01)
(OPTIONAL)
\$3.50 [Z3515], P. 82*



STAMPS:



KIT CONTENTS:



WONDERLAND CARDMAKING WORKSHOP KIT

\$29.95 [G1242]

Use the materials in this kit to create 16 cards, 4 each of 4 designs.

Featured Technique: Embellishing with White Gel Pens

KIT CONTENTS:

- 1 – exclusive B-size stamp set + coordinating Thin Cuts*
- 2 – Wonderland patterned paper sheets
- 3 – cardstock sheets (1 Mulberry, 1 Wisteria, 1 White Daisy)
- 1 – set of exclusive wood stars
- 16 – white card bases & envelopes
- printed instructions

13 stamps; recommended blocks: 1" x 1" (Y1000),
1" x 3½" (Y1002), 2" x 2" (Y1003), 2" x 3½" (Y1009)



**die-cutting machine required for Thin Cuts*

ADDITIONAL SUPPLIES NEEDED:

ROSEMARY EXCLUSIVE INKS™ STAMP PAD

\$9.95 [Z6529], P. 111*

WISTERIA EXCLUSIVE INKS™ STAMP PAD

\$9.95 [Z6514], P. 110*

WHITE GEL PENS

\$8.95 [Z1513], P. 82*

ICE GREY TRIBLEND™ MARKER

\$7.50 [Z2474], P. 80*

THIN 3-D FOAM TAPE

\$6.50 [Z2060], P. 93*



12" x 12"

PAPAYA

WISTERIA

SAPPHIRE

ROSEMARY

SUNDANCE

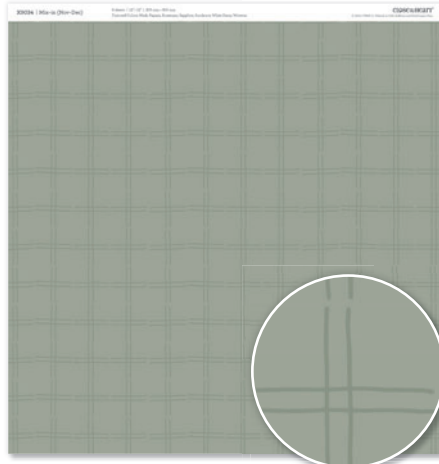
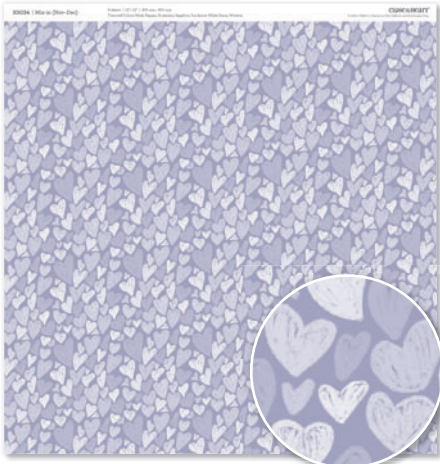
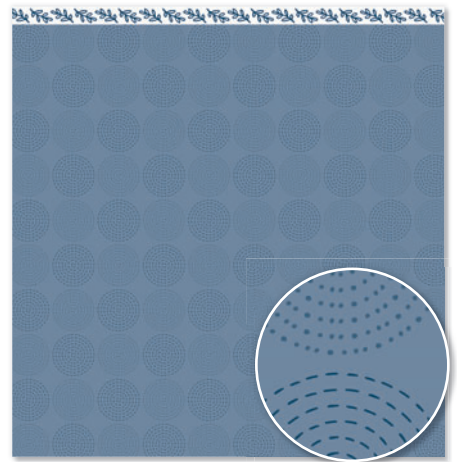
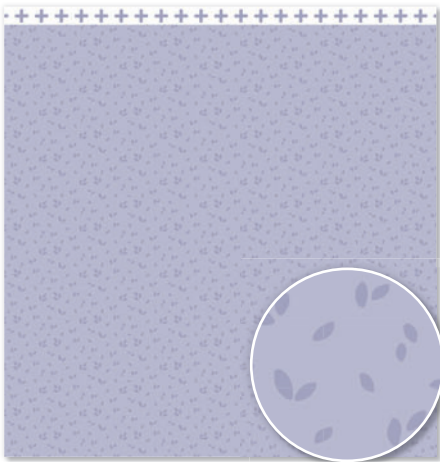
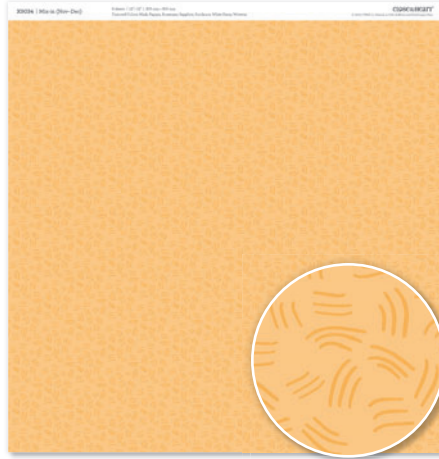
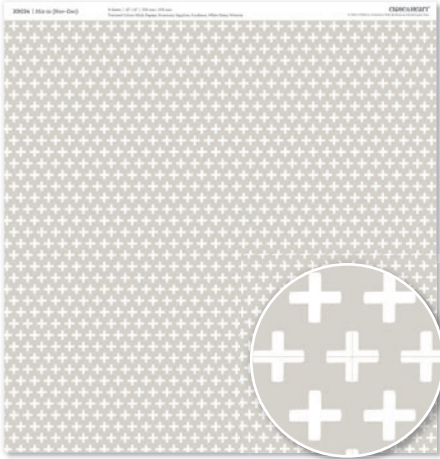
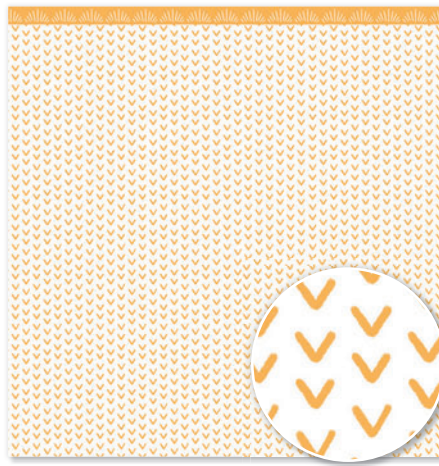
MINK

MIX-IN PAPER PACKET**\$6.95 [X9034]**

6 sheets, 1 each of 6 double-sided designs; 12" x 12" plus ½" zip strip.

MIX-IN COORDINATING CARDSTOCK**\$5.95 [X9035]**

6 sheets, 1 each of Mink, Papaya, Sundance, Rosemary, Sapphire, and Wisteria; 12" x 12".







12" x 12"



STAMPS:



UNDER THE MISTLETOE STAMP + THIN CUTS \$30.95 [Z4107]

STAMP ONLY \$18.95 [D2057]

12 stamps; recommended blocks: 2" x 2" (Y1003), 2" x 3½" (Y1009), 5" x 6" (Y1015)



6" x 6"



STAMPS:



CHRISTMAS TREES STAMP + THIN CUTS \$21.95 [Z4212]
STAMP ONLY \$10.95 [B1782]
 9 stamps; recommended blocks: 1" x 1" (Y1000), 2" x 2" (Y1003),
 2" x 3½" (Y1009)



6" x 6"



WRAPPED UP STAMP + THIN CUTS \$21.95 [Z4255]
STAMP ONLY \$10.95 [B1783]
 6 stamps; recommended blocks: 1" x 3½" (Y1002), 2" x 2" (Y1003),
 2" x 3½" (Y1009)



Use paper piecing to add multiple colors and even silver embossing into the pattern of this large stamp image.



STAMPS:



HAPPY HANUKKAH

יְשׁוּעָה
love & light to you



Festival Of Lights

LOVE & LIGHT \$14.95 [C1917]

10 stamps; recommended blocks: 1" x 1" (Y1000), 1" x 1½" (Y1016), 1 x 3½" (Y1002), 4" x 4" (Y1017)



12" x 12"



HOLIDAY VILLAGE STAMP + THIN CUTS \$35.95 [Z4400]

STAMP ONLY \$18.95 [D2068]

12 stamps; recommended blocks: 1" x 1" (Y1000), 1" x 3½" (Y1002), 2" x 2" (Y1003), 4" x 4" (Y1017)



STAMPS:



if snowflakes
were kisses
I would send
you a blizzard

SNOW glad
we're
friends



have an
ICE day



winter
HELLO

brrrr!

you
WARM my
heart



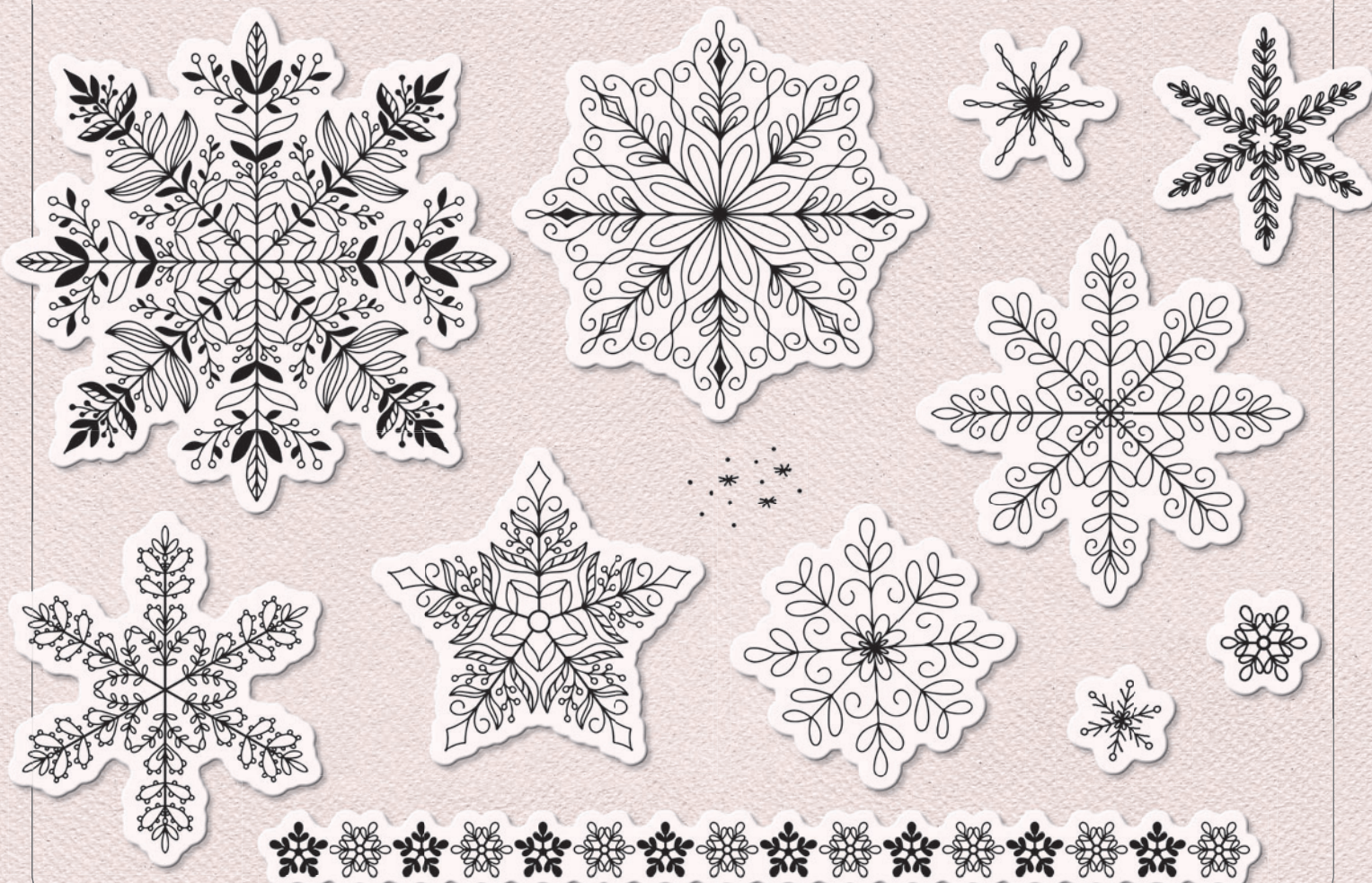
IF SNOWFLAKES WERE KISSES STAMP + THIN CUTS \$34.95 [Z4390]
STAMP ONLY \$18.95 [D2059]
16 stamps; recommended blocks: 1" x 1" (Y1000), 1" x 3½" (Y1002), 3" x 3" (Y1006)



12" x 12"



STAMPS:



FLORAL SNOWFLAKES STAMP + THIN CUTS \$38.95 [Z4098]

STAMP ONLY \$18.95 [D2042]

12 stamps; recommended blocks: 1" x 1" (Y1000), 1" x 1½" (Y1016), 2" x 2" (Y1003), 3" x 3" (Y1006)



12" x 12"



STAMPS:



CLASSIC FLOURISHES \$18.95 [D2066]

16 stamps; recommended blocks: 1" x 1" (Y1000), 2" x 2" (Y1003), 2" x 3½" (Y1009), 2" x 6½" (Y1010)



6" x 8"



6" x 8"

STAMPS:

But the
LORD stood
with me
strengthened
me

I AM WITH YOU
I always

FAITH CAN MOVE
Mountains

more
PRECIOUS
THAN
rubies

I always
THANK
God FOR
you



BE THE
light

ALWAYS WITH YOU \$14.95 [C1921]

8 stamps; recommended blocks: 1" x 1" (Y1000), 1" x 1½" (Y1016),
2" x 2" (Y1003), 2" x 3½" (Y1009)



STAMPS:

tradition

[truh-di-shn] noun

1. a long-established belief or custom
2. the authentic beliefs, values, stories, etc. inherited from previous generations that have been a part of the culture for a long time

TRADITION \$7.95 [A1260]

4 stamps; recommended block: 1" x 3½" (Y1002)



STAMPS:



ALL PETS GO
TO HEAVEN

gone but not
FUR-GOTTEN



pets ask for
so little,
yet leave so
much behind



THE PAW PRINTS LEFT ON
OUR HEARTS NEVER FADE



ALL PETS GO TO HEAVEN STAMP + THIN CUTS \$24.95 [Z4399]

STAMP ONLY \$14.95 [C1918]

13 stamps; recommended blocks: 1" x 1" (Y1000), 1" x 1½" (Y1016), 1" x 3½" (Y1002), 2" x 2" (Y1003), 2" x 3½" (Y1009)

LAGOON

GLACIER

HARBOUR

NEW
ENGLAND
IVY

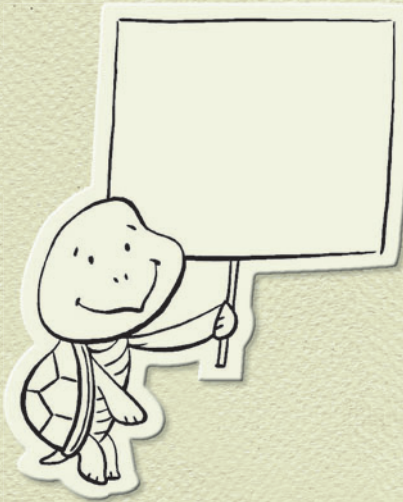
NECTARINE

TOFFEE

MINK

STAMPS:

Hip, hip
HOORAY



LIFE is
better with
friends.



let's get this
PARTY
started



ANIMAL PARTY STAMP + THIN CUTS \$24.95 [Z4396]

STAMP ONLY \$14.95 [C1919]

8 stamps; recommended blocks: 1" x 1" (Y1000), 1" x 1½" (Y1016), 2" x 2" (Y1003), 3" x 3" (Y1006)



6" x 8"



- PAPAYA
- FLAMINGO
- HARBOUR
- ROSEMARY
- AVOCADO

STAMPS:



EVERYDAY FEATURED ATTRACTIONS STAMP + THIN CUTS \$31.95 [Z4391]

STAMP ONLY \$18.95 [D2035]

39 stamps; recommended blocks: 1" x 1" (Y1000), 1" x 3½" (Y1002), 2" x 3½" (Y1009)



8½" x 11"

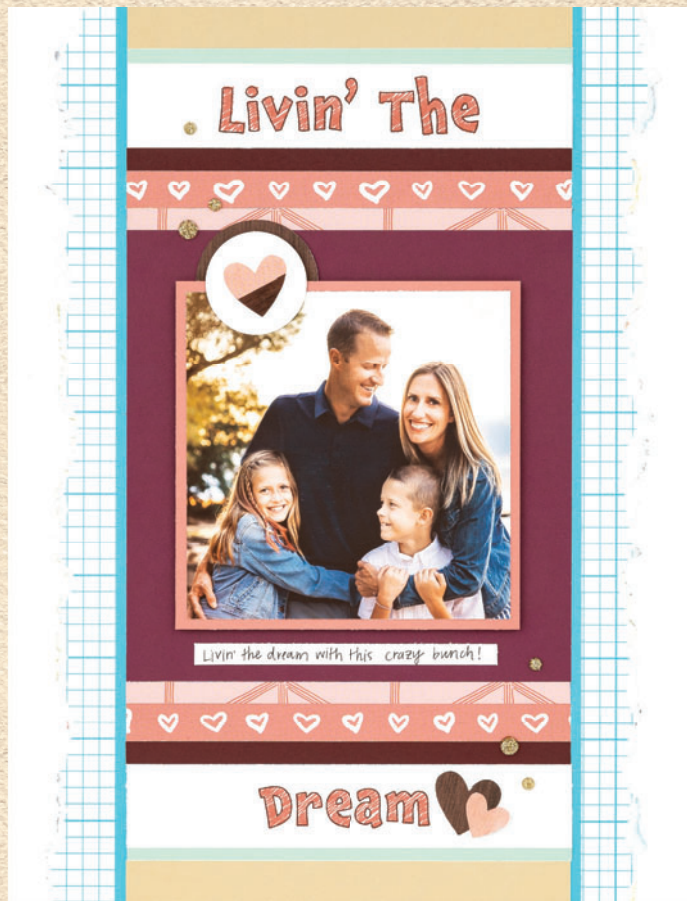


STAMPS:

You + Me
You + Me
Family
Family

YOU + ME \$10.95 [B1776]

10 stamps; recommended blocks: 1" x 1" (Y1000), 1" x 1½" (Y1016), 1" x 3½" (Y1002)



8½" x 11"



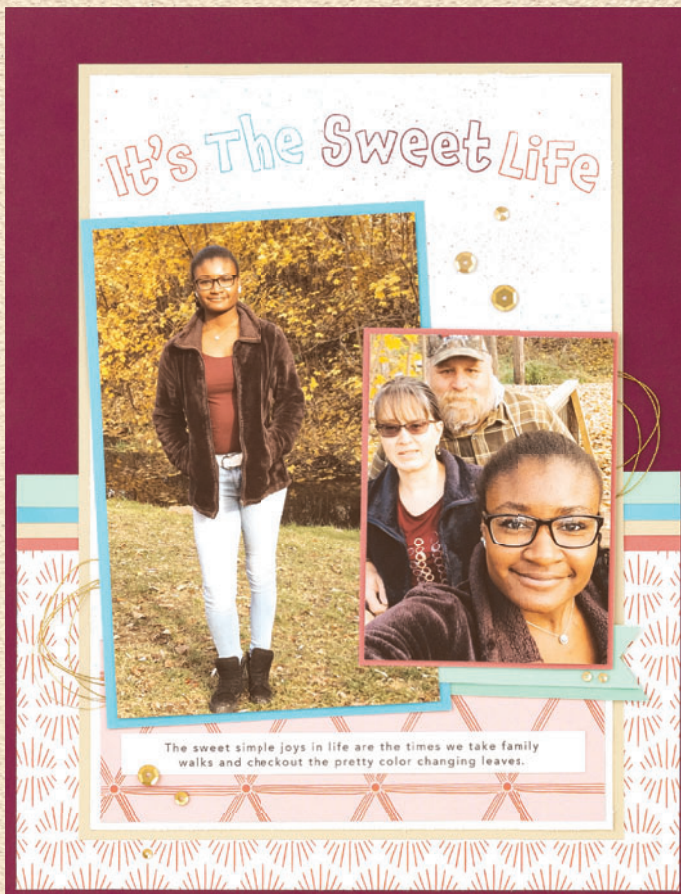
Dream My
Dream My
Livin' The
Livin' The

LIVIN' THE DREAM \$10.95 [B1773]

8 stamps; recommended blocks: 1" x 1½" (Y1016), 1" x 3½" (Y1002)



8½" x 11"



8½" x 11"

STAMPS:

PEACH

GLACIER

SAGE

HARBOUR

SHORT-BREAD

PAPRIKA

PAPAYA

SANGRIA

CAPRI

MINT

SHORT-BREAD

This Is
This Is
Happiness
Happiness
Us Us

THIS IS US \$10.95 [B1775]

8 stamps; recommended blocks: 1" x 1" (Y1000), 1" x 3½" (Y1002)

The Life
The Life
A A It's
Sweet It's
Sweet

THE SWEET LIFE \$10.95 [B1774]

10 stamps; recommended blocks: 1" x 1" (Y1000), 1" x 1½" (Y1016), 1" x 3½" (Y1002)



12" x 12"



Additional stamps and
alternate versions
available at:
closetomyheart.com
Shop
Stamps
Months of the Year



STAMPS:



MONTHS OF THE YEAR—NOVEMBER \$18.95 [D2006]

18 stamps; recommended blocks: 1" x 1" (Y1000), 1" x 3½" (Y1002), 1" x 6½" (Y1005), 2" x 2" (Y1003), 2" x 3½" (Y1009)



STAMPS:



Merry
Christmas



December

holiday
CHEER



DECEMBER

MONTHS OF THE YEAR—DECEMBER \$18.95 [D2007]

15 stamps; recommended blocks: 1" x 1" (Y1000), 1" x 3½" (Y1002), 1" x 6½" (Y1005), 2" x 2" (Y1003), 2" x 3½" (Y1009)

①



Embossing Folder shown at 50% of size



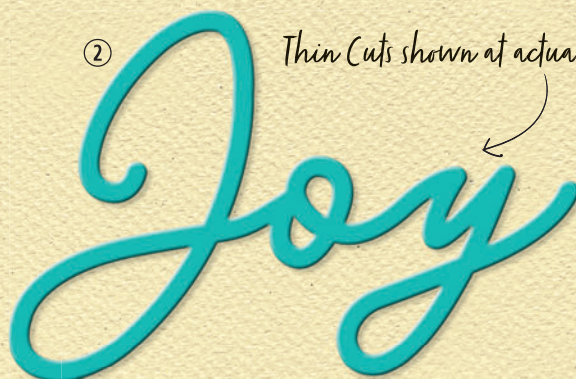
1. KALEIDOSCOPE EMBOSSING FOLDER

\$9.95 [Z4096]

Embossed area: 5" x 7". Folder size: 5 1/4" x 7 1/4".

②

Thin Cuts shown at actual size



③



3. SNOWFLAKE LOOSE SEQUINS

\$4.95 [Z4319]

Loose iridescent snowflake-shaped sequins; 7 mm.



Make your stamped light bulbs glow with soft color by stamping one of the two splotch images onto the filaments of your bulbs.



8 1/2" x 11"

MULBERRY

GRAPE

WISTERIA

LEMONADE

SUNDANCE

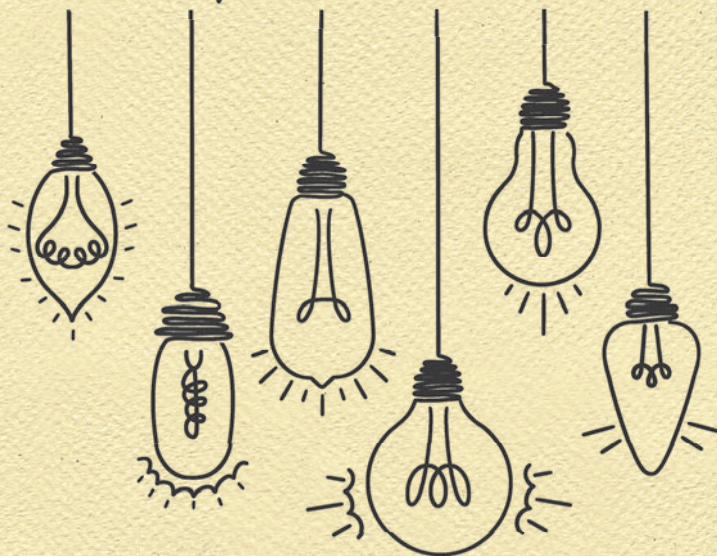
PEWTER

WILD BERRY

STAMPS:

This little
light of mine,
I'm gonna let
it shine!

Created
to shine!



be a
light
for all
to see

CREATED TO SHINE \$18.95 [S2111] SPEND \$50 AND PURCHASE FOR \$5
7 stamps; recommended blocks: 1" x 1" (Y1000), 1" x 6 1/2" (Y1005), 2" x 3 1/2" (Y1009), 4" x 4" (Y1017)



STAMPS:



OWL LOVE YOU FOREVER \$18.95 [S2112] SPEND \$50 AND PURCHASE FOR \$5

9 stamps; recommended blocks: 1" x 1" (Y1000), 1" x 1½" (Y1016), 2" x 2" (Y1003), 2" x 3½" (Y1009), 4" x 4" (Y1017), 5" x 6" (Y1015)

SOCIAL MEDIA:

Follow Close To My Heart's social media channels for more great artwork made using the products in this catalog. We'll be featuring the primary paper collections in the months shown below. Search the hashtags to find artwork inspiration for that paper collection. Add the hashtag to your own posts to share your artwork, too!



NOVEMBER: CANDID MOMENTS
#ctmhcandidmoments



DECEMBER: WONDERLAND
#ctmhwonderland

COPYRIGHT

The copyright in this Close To My Heart catalog is held by CTMH Co. and is protected under United States and international copyright laws. Designs displayed herein are copyright of CTMH Co. Reproduction of this publication is prohibited and is a violation of applicable copyright law. Users of Close To My Heart stamps have a limited, non-exclusive license to reproduce the copyrighted stamp designs only by hand stamping. Close To My Heart permits the sale of hand-stamped artwork in accordance with Close To My Heart's angel policy, which can be found through a link near the bottom of the website, www.closetomyheart.com, or obtained from a Close To My Heart Maker. Photocopying, scanning, or any other mechanical or electronic means of reproducing a stamp design or other proprietary designs featured in this catalog is prohibited.

CLOSE TO MY HEART INDEPENDENT MAKERS

Close To My Heart sells the products featured in this catalog exclusively through Close To My Heart Independent Makers. All Close To My Heart Makers are independent contractors and are not employees or agents of Close To My Heart. If you have any questions about your order or Close To My Heart products, first contact your Maker. In the event you need to contact Close To My Heart directly, the following means of contact are available:

Telephone: 888-655-6552 (toll-free)
Internet: www.closetomyheart.com
Email: CTMHOffice@closetomyheart.com
Mail: Close To My Heart
1199 West 700 South, Pleasant Grove, UT 84062

CLOSE TO MY HEART GUARANTEE & EXCHANGE POLICY

Close To My Heart guarantees its stamps and products to be free from manufacturing defects for a period of 90 days from the date of purchase, and will repair or replace any defective products within that period free of charge. Please inspect your stamps and products immediately upon receipt. Please contact Close To My Heart directly about a no-cost exchange of defective products. Close To My Heart will exchange any non-defective product if it is returned unused and in resalable condition within 90 days of purchase. Standard shipping fees apply for the replacement order.

SUBSTITUTIONS

Close To My Heart reserves the right to update specifications or substitute a product of similar function, quality, and value for a product which has been discontinued or which has changed. Products featured in this catalog are available while supplies last.

PRICING

All prices indicated herein are suggested retail prices. Prices do not include sales tax. All orders have an additional shipping/handling fee. Prices are subject to change.

MEASUREMENTS

Measurements of volume, length, and weight indicated herein are in US customary units, unless metric units are specified. An approximate conversion of US customary units to metric units is as follows: 1 inch (") = 25.4 mm; 12" = 305 mm; 1 yard (3 feet) = .91 m; 1 US fluid ounce = 29.5 ml

TRADEMARKS

The following trademarks are registered in the United States and Canada and are owned by CTMH Co.: Close To My Heart; CTMH; Cut Above; Exclusive Inks; Flip Flaps; Let me show you how; Make It from Your Heart; Memory Protectors; My Acrylix; My Legacy; Reflections; and VersaMat; among others. The following are U.S. registered trademarks of CTMH Co.: Cherish; Everyday Life; Picture My Life, Story by Stacy, and Workspace Wonder, among others. The following are trademarks of CTMH Co.: Imagine; Magic; Petite Perks; Pocket Plus; and Rub & Remove; among others. All trademarks and trade names of third-party products displayed herein are the property of their respective owners, and are not in any way claimed by Close To My Heart or CTMH Co. The following trademarks and trade names belong to third parties: Art Advantage; Cricut; Cricut EasyPress; Cricut Maker, Fiskars; Glue Dots; Graftix; Ranger; StazOn; Stickles; SureCut; Tim Holtz; Tombow; TriBlend; Triple Track; Tsukineko; VersaMark.

STAMP

=I=
TREASURE
→ your →
SMILE

I'm STILL
WEARING
the
smile
you
gave ME

A
SMILE
IS A CURVE THAT
SETS EVERYTHING
STRAIGHT.
PHYLLIS DILLER

S.M.I.L.E.
See
Miracles
In
Life
Every day!

Smile BIG.
Laugh often.

A
SMILE can
=brighten=
someone's
DAY

YOU
MAKE
MY heart
smile

KEEP Smiling,
BECAUSE LIFE
IS A
Beautiful THING
AND THERE'S SO MUCH
TO SMILE ABOUT.
MARILYN MONROE

PEACE
begins with a
smile.
MOTHER TERESA

BE
the reason
SOMEONE
SMILES
today

SMILE BIG \$18.95 [D2063]

10 stamps; recommended blocks: 1" x 1½" (Y1016), 1" x 3½" (Y1002), 2" x 2" (Y1003)



WORKING TOGETHER TO MAKE A DIFFERENCE

Operation Smile™ is a non-profit organization that provides surgeries to repair cleft palates for children around the world. When you purchase the Smile Big stamp set, \$7* of the proceeds goes to help with their life-changing mission.

*Donation is \$7 USD. Stamp set only available for purchase at full retail price.

CONTACT ME:

CLOSE to my HEART™

let me show you how*

www.closetomyheart.com



follow our blog: makeitfromyourheart.com

US

© 2021 ctmh co. all rights reserved. reproduction prohibited. printed in the u.s.a.