

Stitched Together

| 16 cards, 4 each of 4 designs

Featured Technique: Using Watercolor Pencils



Additional Materials Needed:

Z6517 Lemonade Exclusive Inks™
 Z2848 Sapphire Exclusive Inks™ Stamp Pad
 Z2896 Smoothie Exclusive Inks™ Stamp Pad
 Z3630 Watercolor Pencils
 Z1151 3-D Foam Tape
 Z341 Glue Dots® Mini Dots
 1772 Glue Dots® Ultra-thin Dots
 Y1000 1" x 1" My Acrylix® Block
 Y1003 2" x 2" My Acrylix® Block
 Y1015 5" x 6" My Acrylix® Block
 Sewing Needle with Large Eye


Exclusive Stamp + Thin Cuts:



Getting Started:

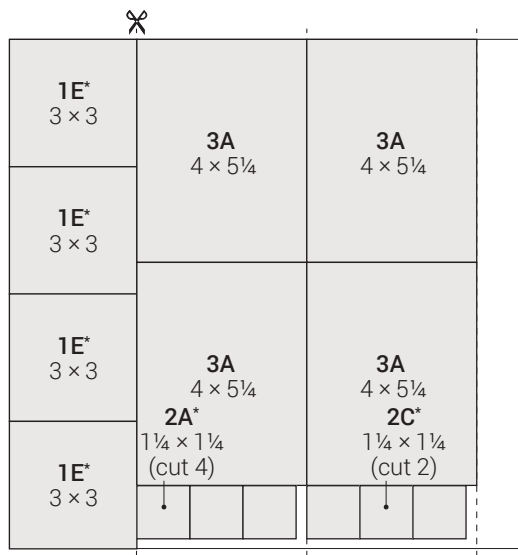
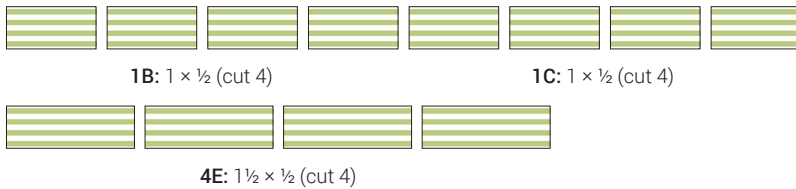
- Gather any additional materials needed.
- Trim all zip strips and set aside. The zip strip is the $\frac{1}{2}$ " accent paper along the top of each sheet of patterned paper.
- Check the cut orientation below each cutting guide image. This will show you how to cut the paper, keeping the patterns on your project pieces facing the right direction.
- Light grey pieces on your cutting guide are project pieces. White pieces are leftover paper.
- As you cut the paper, sort the pieces as indicated in the cutting guide, creating a stack for each project.

Key:

- ✂ = first cut | * = use back of paper
 = suggested Thin Cuts arrangement

Cutting Diagrams:

zip strips



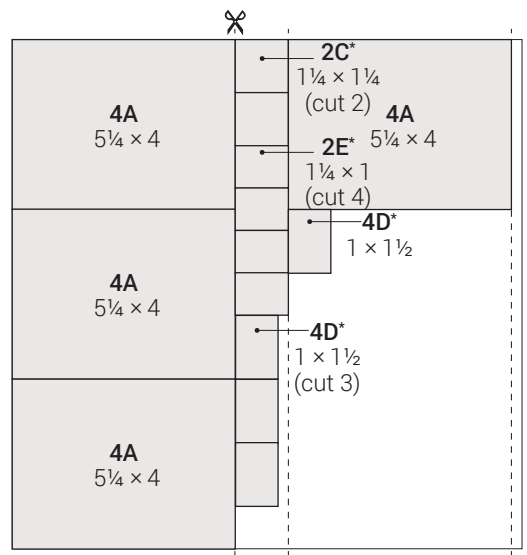
cut orientation



front



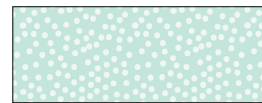
*back



cut orientation



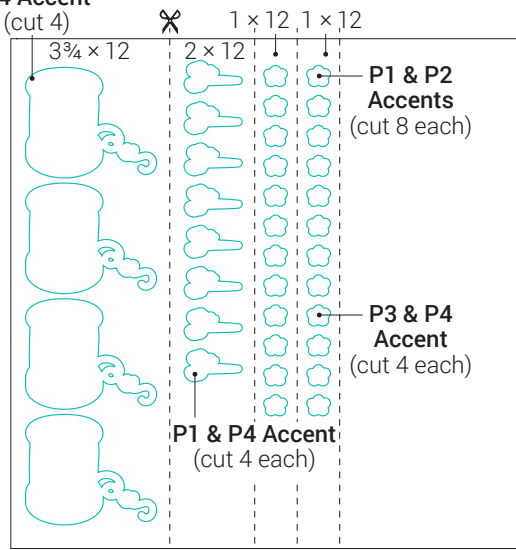
front



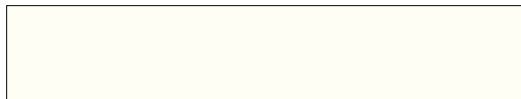
*back



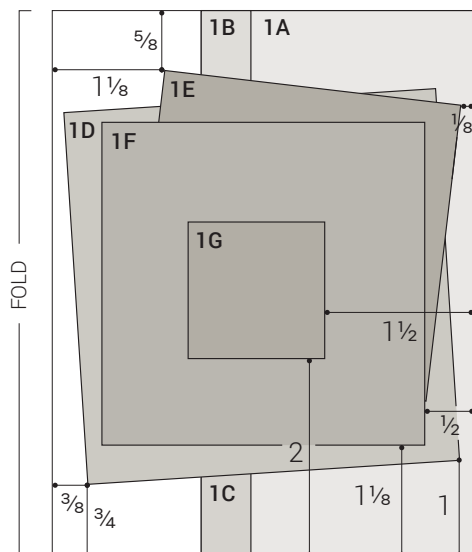
P4 Accent
(cut 4)



French Vanilla cardstock



Project 1



Prepare (4 each):



1F:

Papers: French Vanilla, quilt

Ink: Sapphire

Tips: Hand trim two Sweet Leaf triangles, two Lemonade triangles, two Smoothie triangles, and two Sapphire triangles from quilt patterned paper. Then, cut the Smoothie and Sapphire triangles in half. Attach the triangles to 1F, as shown. Stamp stitches.

Optional: For a card that comes together quicker, instead of creating the patchwork triangles illustrated above, cut a 3" x 3" square and attach it to 1F.



1G:

Paper: French Vanilla

Ink: Sapphire

P1 Accents:

Paper: French Vanilla

Die: flower

Ink: Sapphire

P1 Accent:

Paper: French Vanilla

Die: needle

Ink: Sapphire

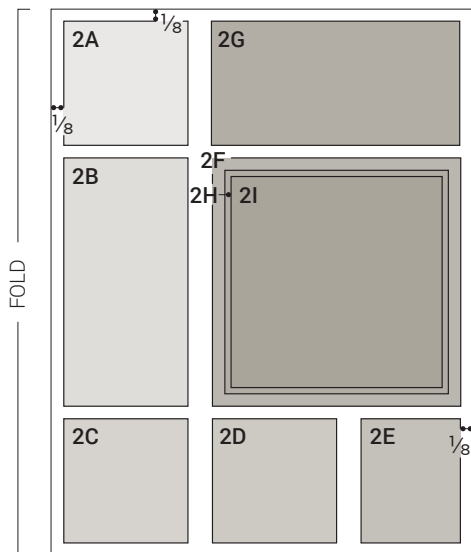
Tip: Add color with watercolor pencils.



Assemble:

1. Prepare pieces shown above
2. Attach 1A
3. Attach 1B and 1C to 1A
4. Embellish with thread
5. Attach 1D and 1E
6. Attach 1F and 1G
7. Attach accents with 3-D foam tape
8. Stamp three small flowers below 1D with Lemonade ink, as shown
9. Embellish with sparkles

Project 2



Prepare (4 each):



2B, 2D, 2G:
Paper: light Lemonade
Ink: Lemonade



P2 Accent:

Paper: French Vanilla
Die: heart
Ink: Sapphire
Tips: Add color with watercolor pencils. Use a needle to embellish with thread.



P2 Accents:

Inks: Sapphire, Smoothie
Die: flower
Tips: Stamp flower outline with Sapphire ink. Stamp solid flower with Smoothie ink, using second-generation stamping technique.
Technique: Ink stamp in Smoothie and stamp it on a scratch piece of paper. Then, without re-inking, stamp on accent.

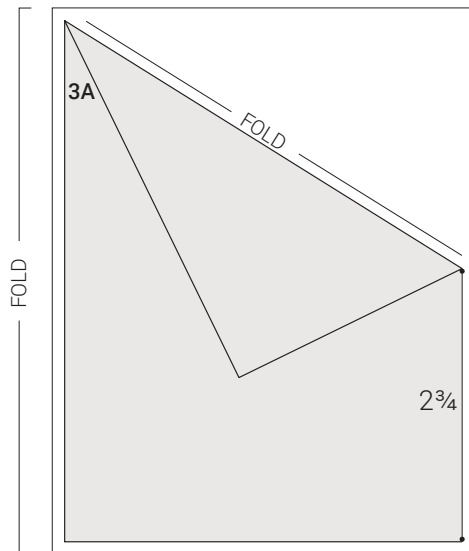


Assemble:

1. Prepare pieces shown above
2. Attach 2A, 2B, 2C, 2D, 2E, 2F, and 2G
3. Attach 2I to 2H
4. Attach 2H with 3-D foam tape
5. Stamp stitch lines on card base with Sapphire ink, as shown
6. Embellish with heart and flower accents
Tip: Attach a few accents with 3-D foam tape for added dimension.
7. Embellish with thread
Tips: Wrap thread around your finger a few times and then attach it to a glue dot. Attach the thread to the card with another glue dot.
8. Embellish with sparkles

Project 3

Prepare (4 each):



P3 Accent:

Paper: French Vanilla

Die: flower

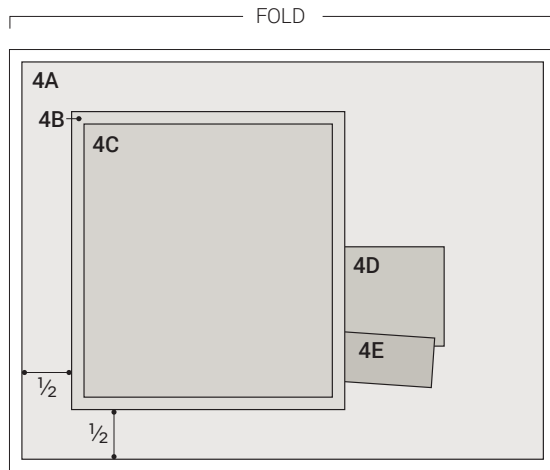
Ink: Smoothie



Assemble:

1. Prepare piece shown above
2. Attach 3A
Tip: Fold the top right corner down, as shown on the pattern, and attach it with a glue dot.
3. Stamp sentiment and stitch line on card base with Sapphire ink, as shown
4. Stamp small flowers on card base with Smoothie ink, as shown
5. Add color to sentiment with watercolor pencils, as shown
6. Attach flower accent with 3-D foam tape
7. Embellish with thread
Tips: Wrap the thread around your finger a few times and then attach it to a glue dot. Attach the thread to the card with another glue dot.

Project 4



Prepare (4 each):



4C:

Paper: French Vanilla
Tip: Add color with watercolor pencils.



P4 Accent:

Paper: French Vanilla
Die: spool
Ink: Sapphire, Smoothie
Tips: Add color with watercolor pencils. Use second-generation stamping technique for flowers. Technique: Ink small flower in Sapphire and stamp it on a scratch piece of paper. Then, without re-inking, stamp on accent.



P4 Accent:

Paper: French Vanilla
Die: needle
Ink: Sapphire
Tip: Add color with watercolor pencils.



P4 Accent:

Paper: French Vanilla
Die: flower
Ink: Lemonade



Assemble:

1. Prepare pieces shown above
2. Attach 4A
3. Attach 4C to 4B
4. Attach 4B with 3-D foam tape
5. Dovetail 4D and 4E, and attach
6. Attach spool, needle, and flower accents with 3-D foam tape, as shown
7. Embellish with thread
Tips: Wrap the thread around your finger a few times and attach it to a glue dot. Attach the thread to the card with another glue dot.