

Featured Technique: Antique Heat Embossing



Exclusive Stamp + Thin Cuts:

best
WISHES

just writing

to say

thank you

you mean
THE WORLD to me

```
hello
```

friend

thinking

of you

Getting Started:

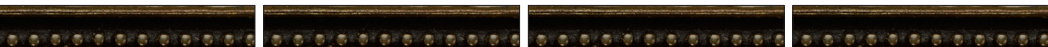
- Gather any additional materials needed.
- Trim all zip strips and set aside. The zip strip is the 1/2" accent paper along the top of each sheet of patterned paper.
- Check the cut orientation below each cutting guide image. This will show you how to cut the paper, keeping the patterns on your project pieces facing the right direction.
- Light grey pieces on your cutting guide are project pieces. White pieces are leftover paper.
- As you cut the paper, sort the pieces as indicated in the cutting guide, creating a stack for each project.

Key:

- ✂ = first cut | * = use back of paper
- = suggested Thin Cuts arrangement

Cutting Diagrams:

zip strips

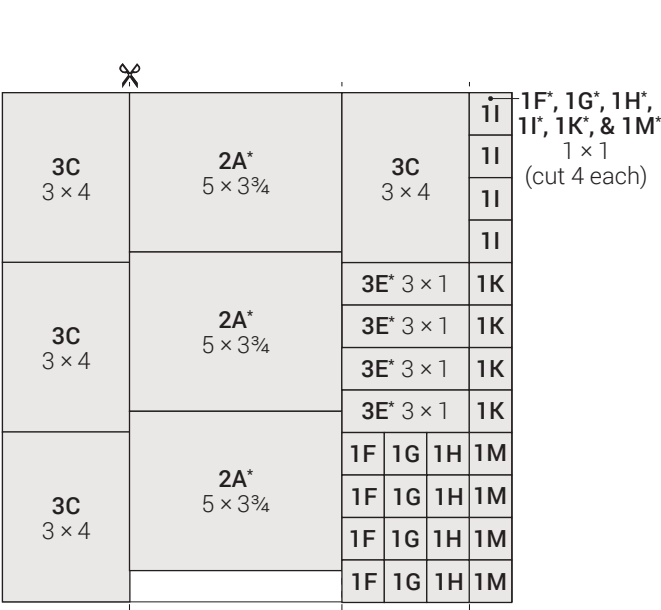


3D: 3 x 1/2 (cut 4)

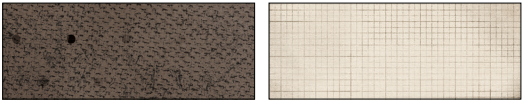


4F: 2 1/2 x 1/2 (cut 4)

4G: 1/2 x 1/2 (cut 4)

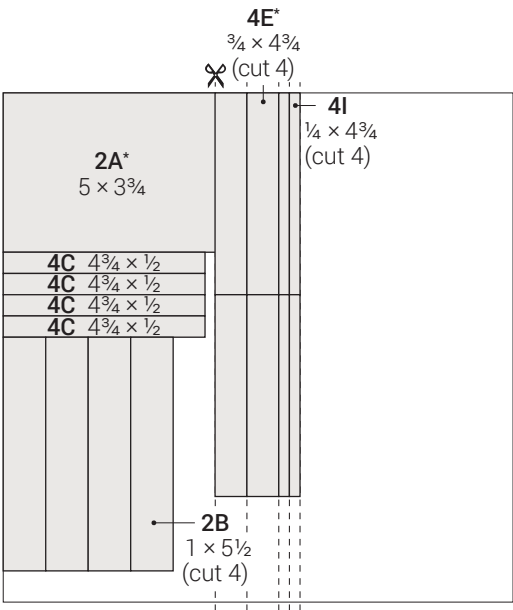


cut orientation

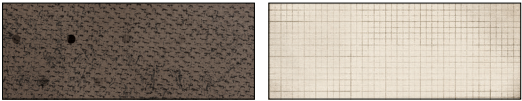


front

*back

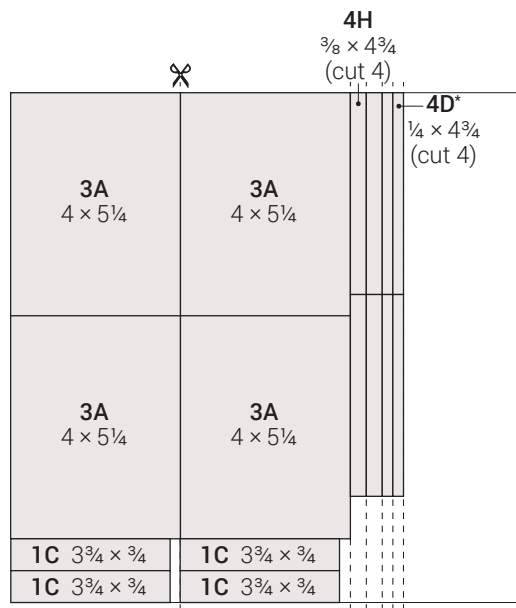


cut orientation



front

*back

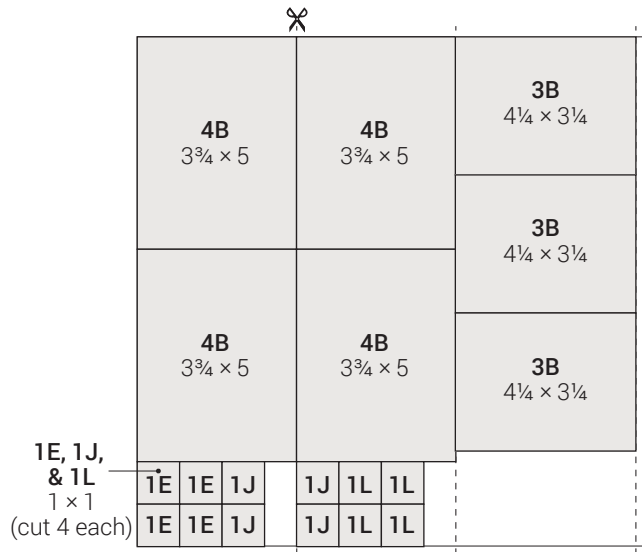


Mink cardstock

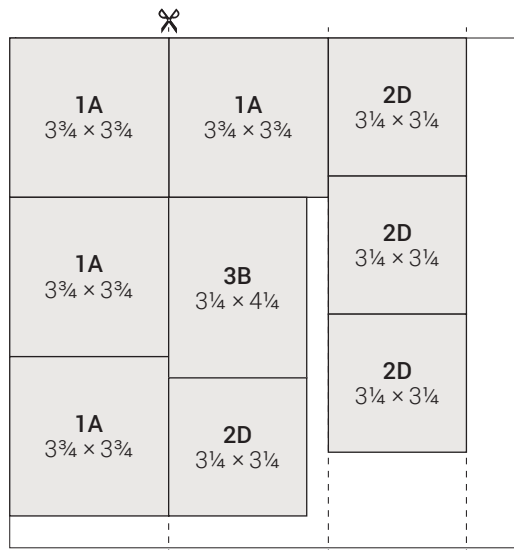


dark

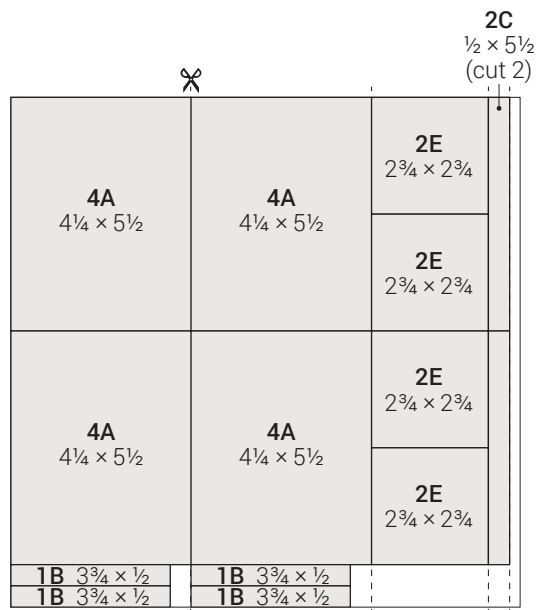
* light



Kraft paper

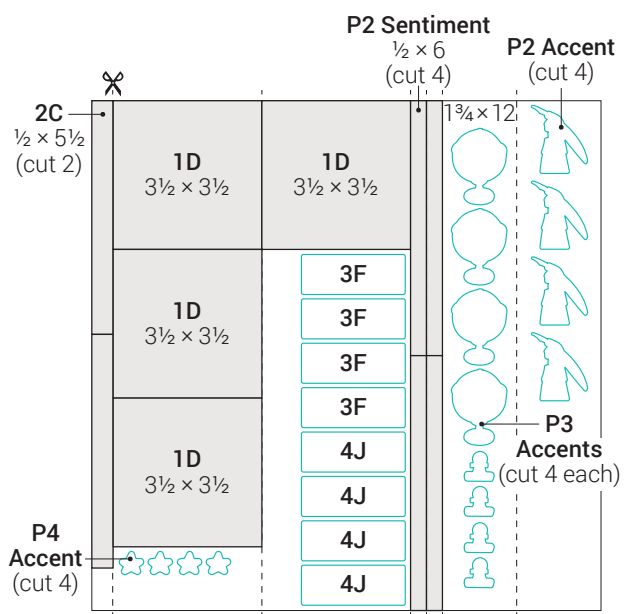


Kraft paper

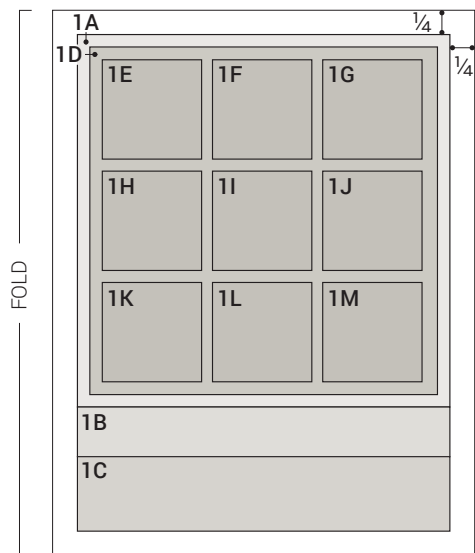


French Vanilla cardstock





Project 1



Prepare (4 each):



Card Base:

Paper: card base
Ink: Toffee
Tip: Sponge edges.



1B:

Paper: French Vanilla
Ink: Toffee
Tips: Stamp top of paper clip repeatedly across the top. Then, sponge edges with Toffee ink.



1C:

Paper: Mink
Inks: Espresso pigment, Toffee
Tips: Stamp "thank you" with Espresso pigment. Then, sponge edges with Toffee.

1E, 1J, & 1L:

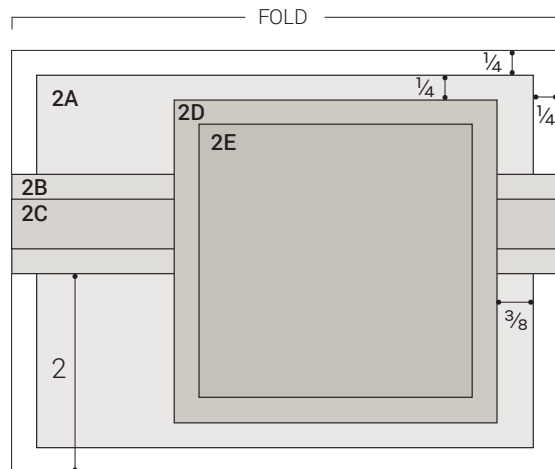
Paper: Kraft
Ink: Espresso pigment (with Silver embossing powder)
Tips: Heat emboss. Use tweezers to hold the paper while applying heat.
Technique: Rub the surface of 1E with an anti-static pouch. Emboss the image by stamping with Espresso pigment ink, sprinkling the wet image with embossing powder, shaking off any excess powder, and heating with the heat tool until the powder and ink melt together.



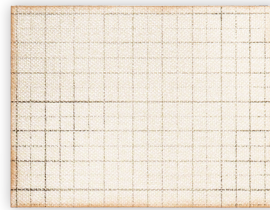
Assemble:

1. Prepare pieces shown above
2. Attach 1A, 1B, and 1C
3. Attach 1D, as shown
4. Attach 1E, 1F, 1G, 1H, 1I, 1J, 1K, 1L, and 1M
Tip: Lay out all these pieces before attaching.
5. Embellish with twine
Tips: With glue dots, attach a 3½" strand along the bottom of 3D. Tie a separate knot and fray the ends before attaching it, as shown, with a glue dot.

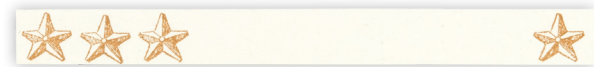
Project 2



Prepare (4 each):



2A:
Paper: grid
Ink: Toffee
Tip: Sponge edges.



2C:
Paper: French Vanilla
Ink: Toffee



2E:
Paper: French Vanilla
Ink: Toffee
Tip: Sponge edges.



P2 Accent:
Paper: French Vanilla
Die: hand
Inks: Espresso pigment, Toffee
Tips: Stamp the image with Espresso pigment and sponge edges with Toffee ink.



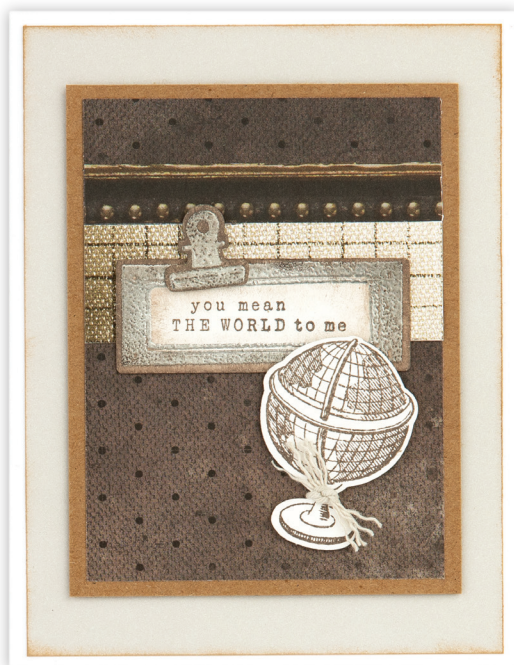
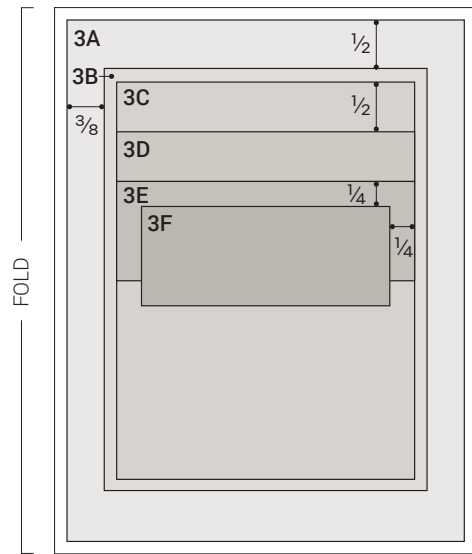
P2 Sentiment:
Paper: French Vanilla
Ink: Espresso Pigment, Toffee
Tips: Stamp close together and hand trim.



Assemble:

1. Prepare pieces shown above
2. Attach 2A, 2B, and 2C
3. Embellish with twine
Tip: Wrap twine around the front of the card and tie a knot on the left side, as shown.
4. Attach 2E to 2D
5. Attach 2D with thin 3-D foam tape
6. Attach hand accent and sentiment with thin 3-D foam tape

Project 3



Prepare (4 each):



3A:

Paper: Mink

Ink: Toffee

Tip: Sponge edges.



3F:

Paper: French Vanilla

Die: rectangle

Ink: Espresso pigment (with silver embossing powder)

Tips: Antique heat emboss and sponge edges first, then stamp the sentiment in the center. Use tweezers to hold the paper while applying heat.

Technique: Rub the cardstock surface with an anti-static pouch. Emboss the image by stamping with Espresso pigment ink, sprinkling the wet image with embossing powder, shaking off any excess powder, and heating with the heat tool until the powder and ink melt together. Lightly sponge on top of the embossed image with ink to create an antique look.



P3 Accent:

Paper: French Vanilla

Die: clip

Ink: Espresso pigment

Tips: Antique heat emboss and sponge edges. Use tweezers to hold the paper while applying heat.

Technique: Rub the cardstock surface with an anti-static pouch. Emboss the image by stamping with Espresso pigment ink, sprinkling the wet image with embossing powder, shaking off any excess powder, and heating with the heat tool until the powder and ink melt together. Lightly sponge on top of the embossed image with ink to create an antique look.



P3 Accent:

Paper: French Vanilla

Die: globe

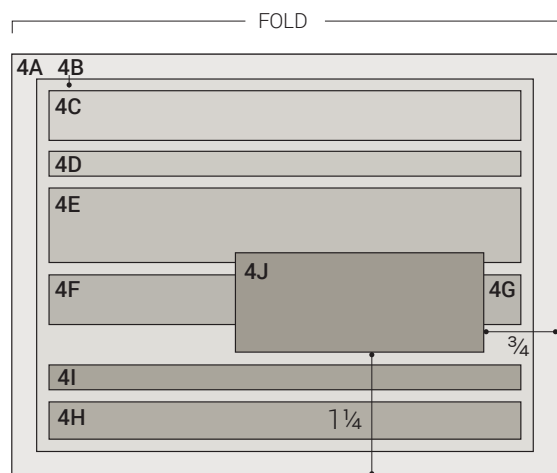
Ink: Espresso pigment

Tip: Embellish the stand with twine and fray the ends.

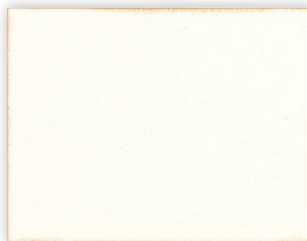
Assemble:

1. Prepare pieces shown above
2. Attach 3A
3. Attach 3D and 3E to 3C
4. Attach 3F to 3C
5. Attach 3C to 3B
6. Attach 3B with thin 3-D foam tape
7. Attach globe and clip accents with thin 3-D foam tape, as shown

Project 4



Prepare (4 each):



4A:

Paper: French Vanilla
Ink: Toffee
Tip: Sponge edges.



4J:

Paper: French Vanilla
Die: rectangle
Inks: Espresso Pigment, Toffee



P4 Accent:

Paper: French Vanilla
Die: star
Ink: Espresso pigment (with silver embossing powder)
Tips: Antique heat emboss and sponge edges. Use tweezers to hold the paper while applying heat.
Technique: Rub the cardstock surface with an anti-static pouch. Emboss the image by stamping with Espresso pigment ink, sprinkling the wet image with embossing powder, shaking off any excess powder, and heating with the heat tool until the powder and ink melt together. Lightly sponge on top of the embossed image with ink to create an antique look.



Assemble:

1. Prepare pieces shown above
2. Attach 4A
3. Attach 4C, 4D, 4E, 4F, 4G, 4H, and 4I to 4B, as shown
4. Embellish 4B with twine
Tip: Wrap twine around 4B and tie a knot on the right side, as shown.
5. Attach 4B with thin 3-D foam tape
6. Attach 4J with thin 3-D foam tape
7. Attach star accent with thin 3-D foam tape, as shown