

Holly Jolly

16 cards, 4 each of 4 designs

Featured Technique: Using Watercolor Pencils



Additional Materials Needed:

Z6507 Clover Exclusive Inks™ Stamp Pad
 Z4189 Intense Black Exclusive Inks™ Stamp Pad
 Z6509 Candy Apple Exclusive Inks™ Stamp Pad
 Z4242 Watercolor Pencils
 Z3224 Waterbrush—Small Round
 Z2060 Thin 3-D Foam Tape
 Z2089 Glue Dots® Micro Dots
 Z3516 Journaling Pen—Black (.03)

Exclusive Stamp + Thin Cuts:



Getting Started:

- Gather all additional materials needed.
- Trim all zip strips and set aside. The zip strip is the $\frac{1}{2}$ " accent paper along the top of each sheet.
- Check the cut orientation below each cutting guide image. This will show you how to cut the paper, keeping the patterns on your project pieces facing the right direction.
- Light grey pieces on your cutting guide are project pieces. White pieces are leftover paper.
- As you cut the paper, sort the pieces as indicated in the cutting guide, creating a stack for each project.

Key:

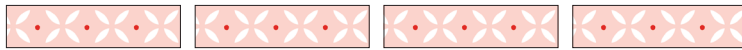
✂ = first cut | * = use back of paper

■ = suggested stamp arrangement | ■ = suggested Thin Cuts arrangement

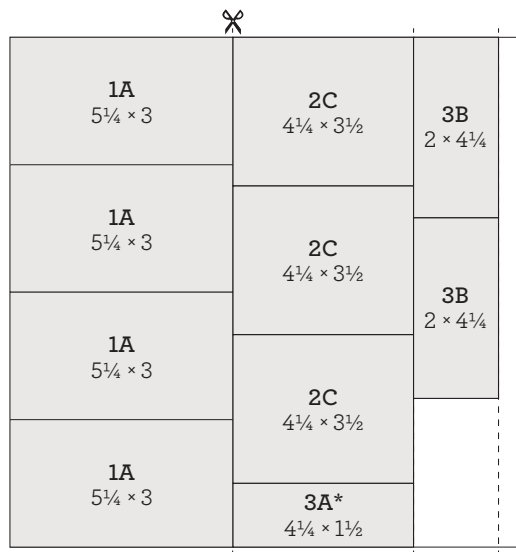
(See project instructions for ink color and other details)

Cutting Diagrams:

zip strips



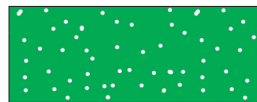
2F: $2 \times \frac{1}{2}$ (cut 4)



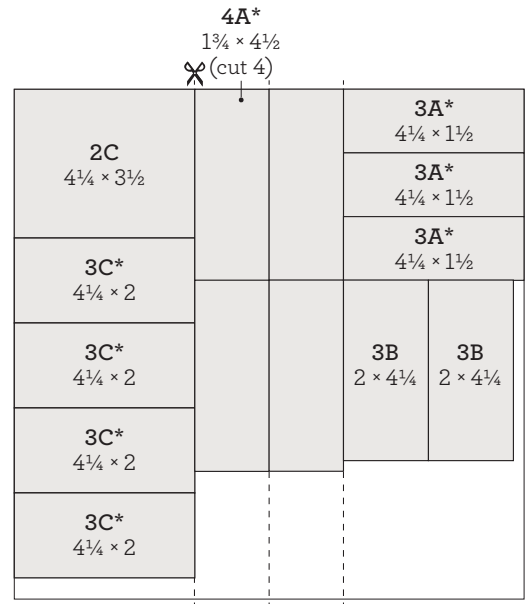
cut orientation



front



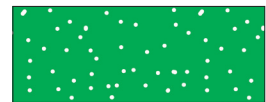
*back



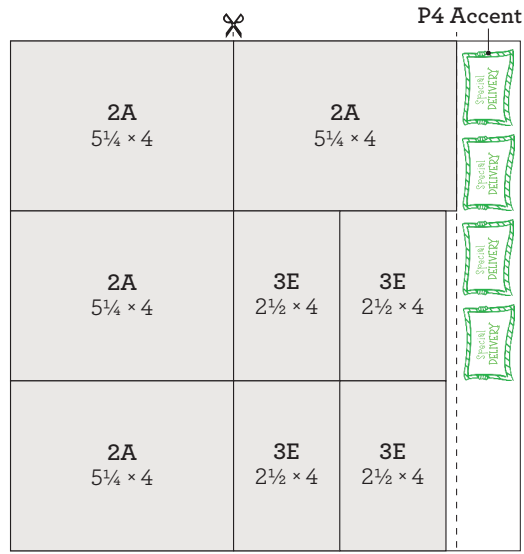
cut orientation



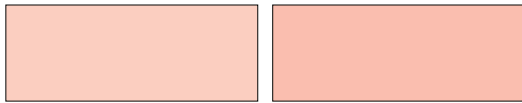
front



*back

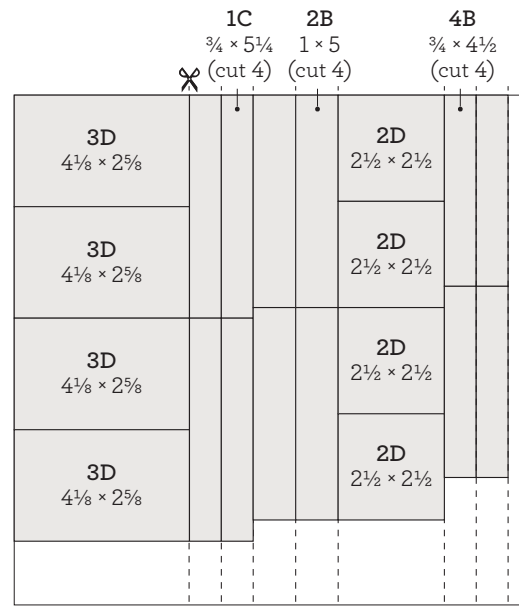


Peach cardstock

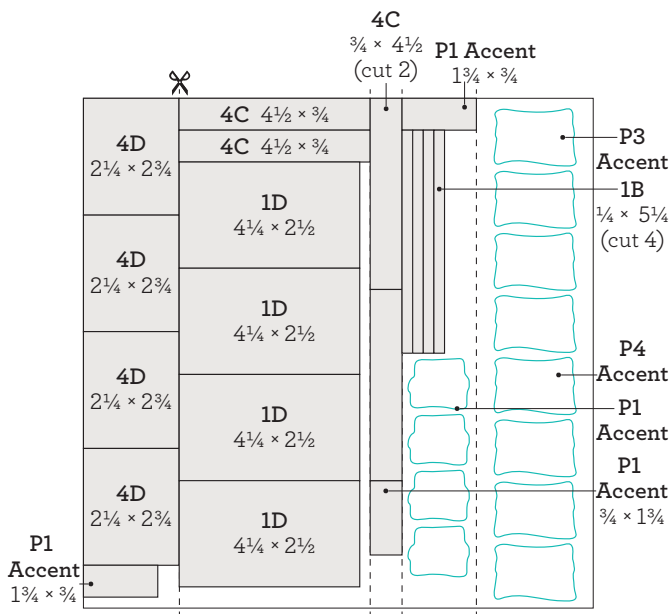


light

*dark



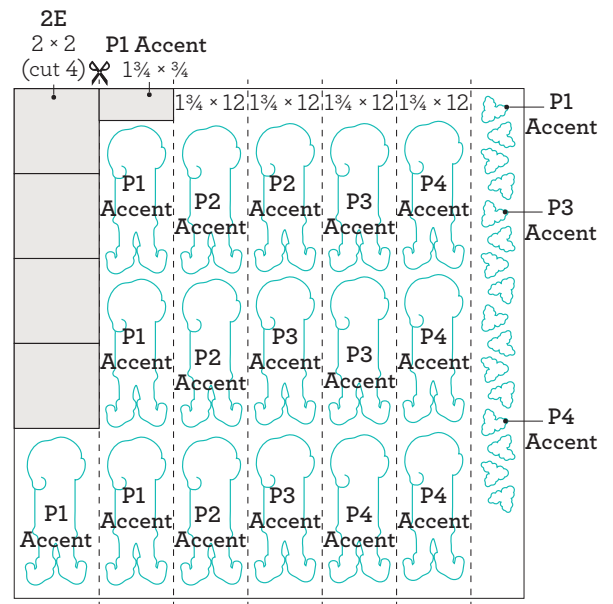
Black cardstock



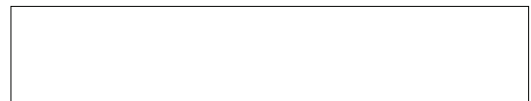
White Daisy cardstock



Tip: In order to have enough paper for all of the necessary shapes, make your die cuts close together, as shown.

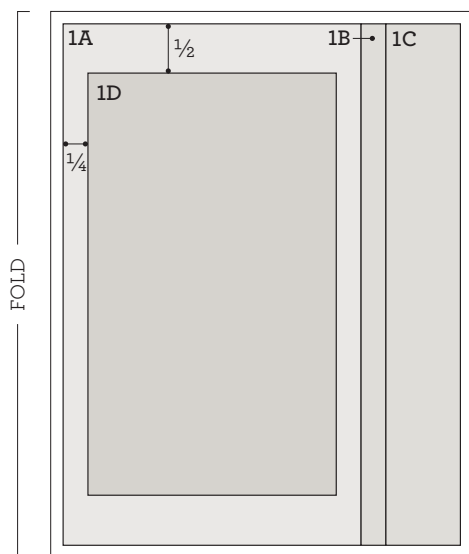


White Daisy cardstock



Tip: In order to have enough paper for all of the necessary shapes, make your die cuts close together, as shown.

Project 1: Make 4

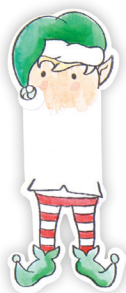


Prepare (4 each):



1B:

Paper: White Daisy
Ink: Intense Black



P1 Accent:

Paper: White Daisy
Die: elf
Ink: Intense Black
Tip: Add color with watercolor pencils.
Technique: Use the waterbrush to gently blend colors.



P1 Accent:

Paper: White Daisy
Die: gift boxes
Ink: Intense Black
Tip: Add color with watercolor pencils.
Technique: Use the waterbrush to gently blend color.



P1 Accent:

Paper: White Daisy
Die: holly
Inks: Candy Apple, Clover



P1 Accent:

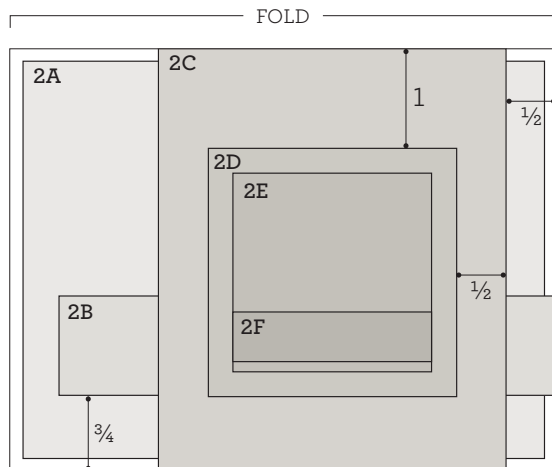
Paper: White Daisy
Ink: Intense Black
Tip: Draw border with journaling pen.



Assemble:

1. Prepare pieces shown above
2. Attach 1A and 1B to card base
3. Embellish 1C with thread
Tip: Attach bow with a glue dot.
4. Attach 1C
5. Draw border on 1D with journaling pen, and attach
6. Attach elf accent with thin 3-D foam tape, as shown
7. Attach gift accent, as shown
Tip: Tuck the top left corner under the elf hat pom-pom.
8. Attach "special delivery" accent with thin 3-D foam tape, as shown
9. Attach holly accent, as shown

Project 2: Make 4



Prepare (4 each):



2A:

Paper: light Peach

Ink: Ruby

Tip: Use second-generation stamping technique.

Technique: Ink stamp in Ruby and stamp it on a scratch piece of paper. Then, without re-inking, stamp on 2A.



2E:

Paper: White Daisy

Ink: Intense Black

Tip: Add color with watercolor pencils.

Technique: Use the waterbrush to gently blend color.



P2 Accent:

Paper: White Daisy

Die: elf

Ink: Intense Black

Tip: Add color with watercolor pencils to top portion, then trim off bottom.

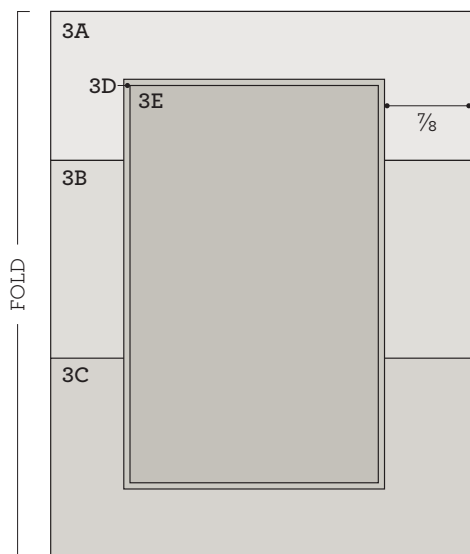
Technique: Use the waterbrush to gently blend colors.



Assemble:

1. Prepare pieces shown above
2. Attach 2A to card base
3. Dovetail 2B and attach
4. Attach 2C
5. Attach 2D with thin 3-D foam tape
Tip: Do not use adhesive along the top of 2D so another piece can be tucked behind it in a later step.
6. Attach 2E and 2F
7. Attach elf accent, as shown
Tip: Tuck slightly behind 2D, as shown, with hat pom-pom on top.
8. Embellish with thread
Tip: Attach bow with a glue dot.

Project 3: Make 4

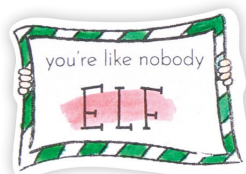


Prepare (4 each):



P3 Accent:

Paper: White Daisy
Die: elf
Ink: Intense Black
Tip: Add color with watercolor pencils.
Technique: Use the waterbrush to gently blend colors.



P3 Accent:

Paper: White Daisy
Die: sign
Ink: Intense Black
Tip: Add color with watercolor pencils.
Technique: Use the waterbrush to gently blend colors.



P3 Accents:

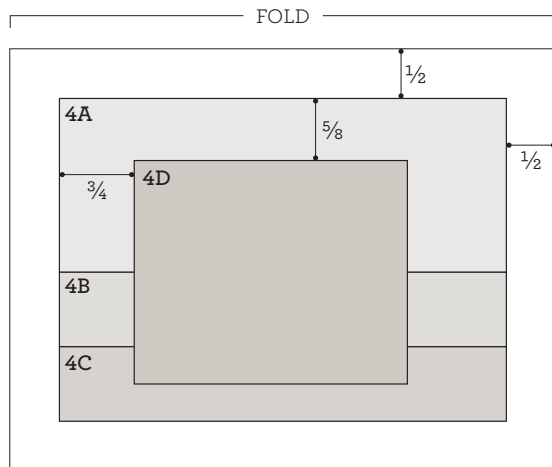
Paper: White Daisy
Die: holly
Inks: Candy Apple, Clover



Assemble:

1. Prepare pieces shown above
2. Attach 3A, 3B, and 3C to card base
3. Center 3D on card base and attach with thin 3-D foam tape, as shown
4. Center 3E on 3D and attach, as shown
5. Attach elf accent with thin 3-D foam tape, as shown
6. Attach sign accent, as shown
Tip: Tuck the top left side of sign under the elf hat pom-pom.
7. Embellish with thread
Tip: Wrap the thread around a finger a few times and attach it to a glue dot. Attach the thread cluster to the card with another glue dot.
8. Attach holly accents, as shown

Project 4: Make 4



Prepare (4 each):



4C:

Paper: White Daisy
Ink: Intense Black



4D:

Paper: White Daisy
Tip: Draw a border with watercolor pencils, as shown.



P4 Accent:

Paper: White Daisy
Die: elf
Ink: Intense Black
Tip: Add color with watercolor pencils.
Technique: Use the waterbrush to gently blend colors.



P4 Accent:

Paper: White Daisy
Die: sign
Ink: Intense Black
Tip: Add color with watercolor pencils.
Technique: Use the waterbrush to gently blend color.



P4 Accent:

Paper: light Peach
Die: sign
Ink: Intense Black
Tip: Hand trim center of sign.



P4 Accent:

Paper: White Daisy
Die: holly
Ink: Candy Apple, Clover



Assemble:

1. Prepare pieces shown above
2. Attach 4A to card base
3. Embellish 4B with thread and attach to card base
4. Attach 4C
5. Attach 4D with thin 3-D foam tape
6. Attach elf accent, as shown
7. Attach White Daisy sign accent with thin 3-D foam tape
Tip: Tuck the top left side under the elf hat pom-pom.
8. Attach "Special DELIVERY" accent, as shown
9. Attach holly accent, as shown
10. Embellish with thread loops
Tip: Wrap the thread around a finger a few times and attach it to a glue dot. Attach the thread cluster to the card with another glue dot, tucked slightly under 4D.