

Grateful for You | 12 cards, 6 each of 2 designs

Featured Technique: Repeat Stamping



Additional Materials Needed:

Z2831 Charcoal Exclusive Inks™ Stamp Pad
Z2835 New England Ivy Exclusive Inks™ Stamp Pad
Z6502 Peach Exclusive Inks™ Stamp Pad
Z2848 Sapphire Exclusive Inks™ Stamp Pad
Z2060 Thin 3-D Foam Tape
Z2089 Glue Dots® Micro Dots

Exclusive Stamp Set:



Getting Started:

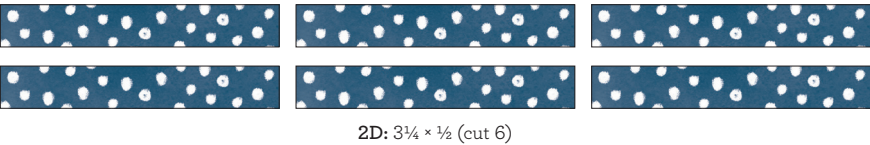
- Gather all additional materials needed.
- Trim all zip strips and set aside. The zip strip is the 1/2" accent paper along the top of each sheet.
- Check the cut orientation below each cutting guide image. This will show you how to cut the paper, keeping the patterns on your project pieces facing the right direction.
- Light grey pieces on your cutting guide are project pieces. White pieces are leftover paper.
- As you cut the paper, sort the pieces as indicated in the cutting guide, creating a stack for each project.

Key:

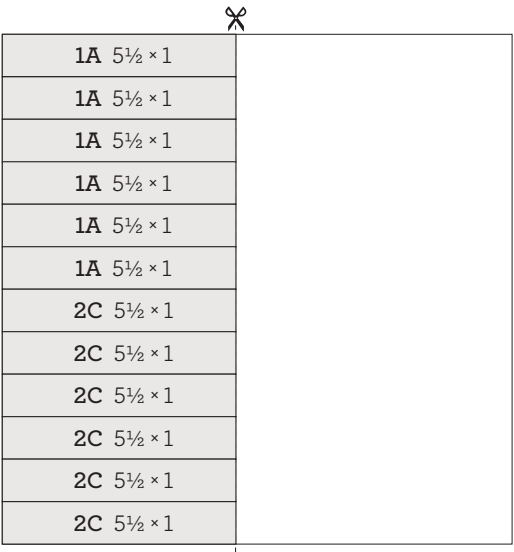
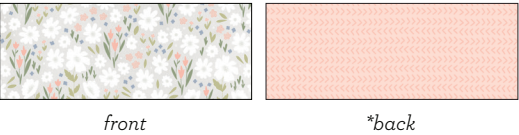
✂ = first cut | * = use back of paper | P = project
■ = suggested stamp arrangement
(See project instructions for ink color and other details)

Cutting Diagrams:

zip strips

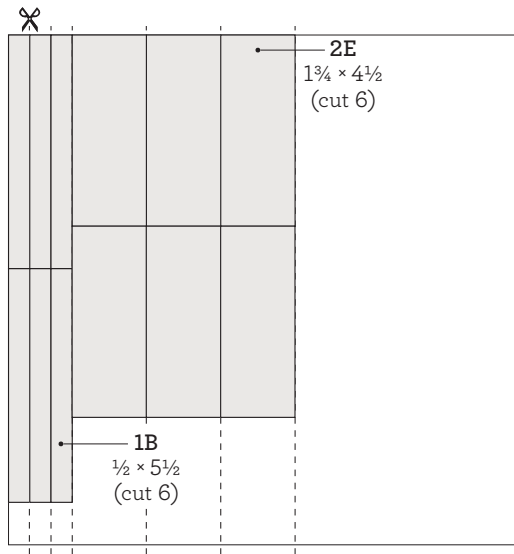


cut orientation



cut orientation



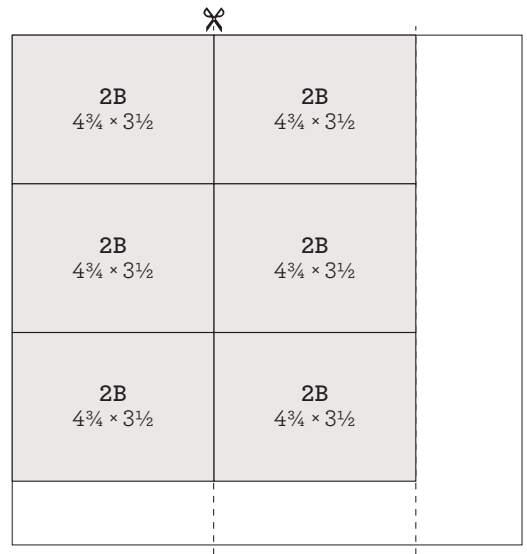


Fern cardstock

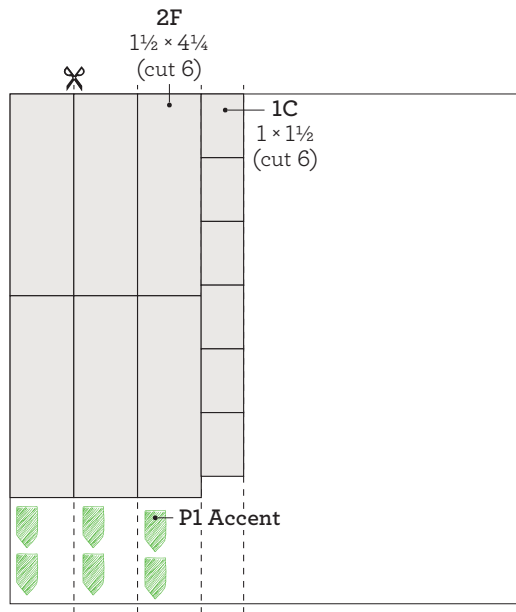


dark

**light*



White Daisy cardstock

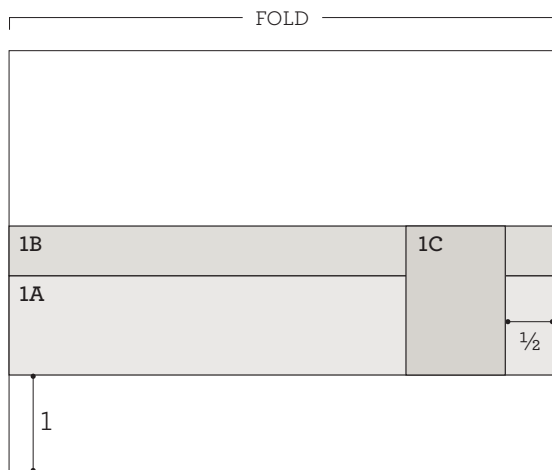


White Daisy cardstock



Project 1: Make 6

Prepare (6 each):



Card Base:

Paper: card base

Inks: Charcoal, Peach

Tip: Use repeat stamping to create border.

Technique: Begin by stamping the bottom left corner. Re-ink the stamp, line it up next to the previously stamped image, and stamp again. Repeat until border is complete.



1C:

Paper: White Daisy

Ink: New England Ivy

Tip: Stamp first, then dovetail.



P1 Accent:

Paper: White Daisy

Ink: Sapphire

Tip: Hand trim.



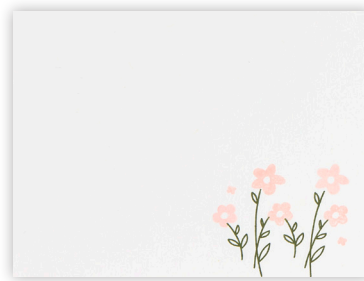
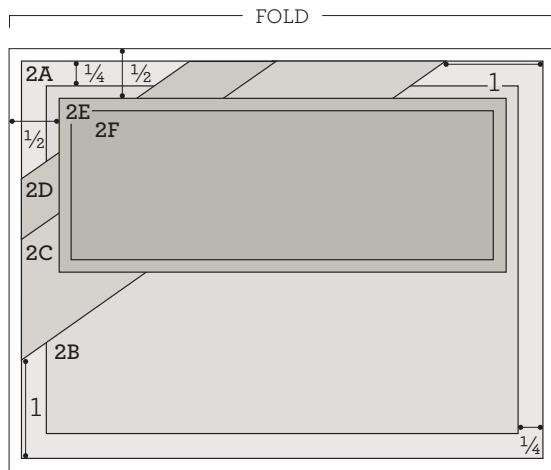
Assemble:

1. Prepare pieces shown above
2. Attach 1A and 1B to card base
3. Attach 1C
4. Attach accent
5. Embellish with thread

Tip: Stack two 9" pieces of thread, and tie them into a bow. Trim excess. Attach the bow, as shown, with a glue dot.

Project 2: Make 6

Prepare (6 each):



2B:

Paper: White Daisy
Inks: New England Ivy, Peach



2F:

Paper: White Daisy
Inks: Charcoal, Sapphire



Assemble:

1. Prepare pieces shown above
2. Attach 2B to 2A
3. Attach 2C and 2D to 2A
Tip: Trim the ends of 2C and 2D, flush with the edges of 2A as shown.
4. Embellish with thread
Tip: Wrap thread around 2A twice and tie on back with a knot.
5. Attach 2A to card base
6. Attach 2E
7. Embellish with thread bow
Tips: Stack two 9" pieces of thread and tie them into a bow. Trim excess, then attach the bow with a glue dot.
8. Attach 2F with thin 3-D foam tape