

# In My Heart | 12 Cards

Featured Technique: Using the Edge Distresser

Project 1: Make 6



Project 2: Make 6



## Additional Materials Needed:

Z2831 Charcoal Exclusive Inks™ Stamp Pad  
Z2841 Glacier Exclusive Inks™ Stamp Pad  
Z2835 New England Ivy Exclusive Inks™ Stamp Pad  
Z1297 Edge Distresser  
Z2060 Thin 3-D Foam Tape

## Exclusive Stamp Set:

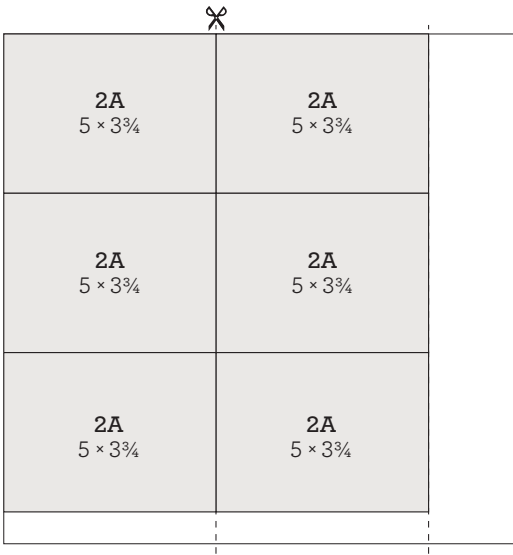


Trim all zip strips and set aside



2D: 1½ × ½ (cut 6)

Cut paper | ✂ = first cut

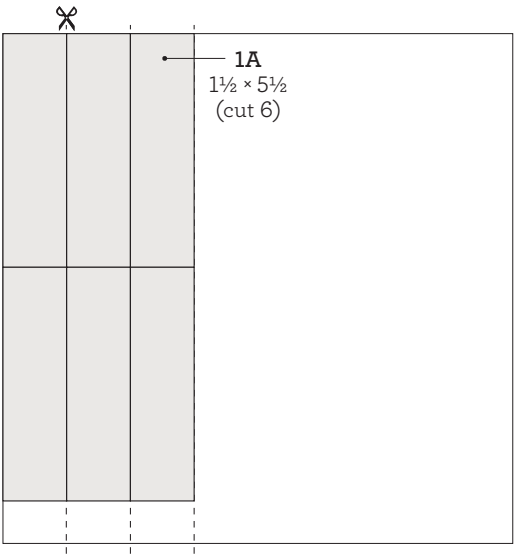


cut orientation



front

\*back



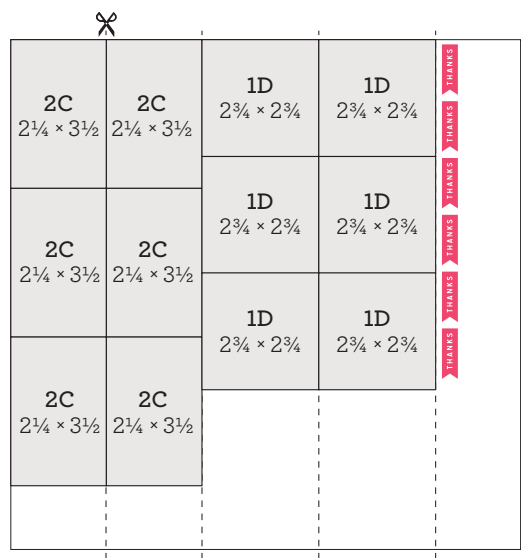
cut orientation



front

\*back

pink shapes = suggested stamp arrangement

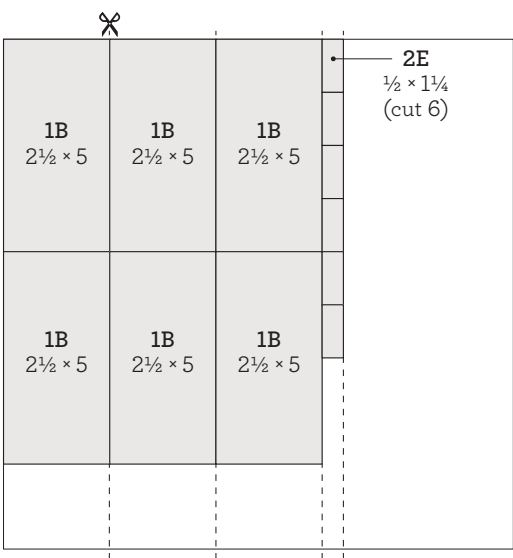


Linen cardstock

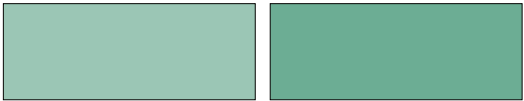


light

\*dark

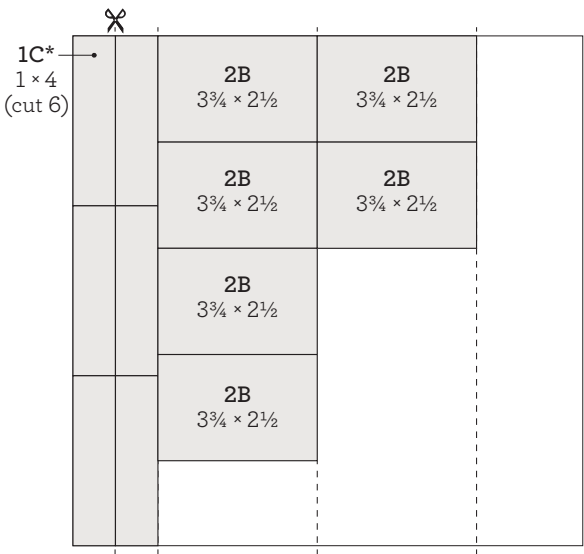


Juniper cardstock

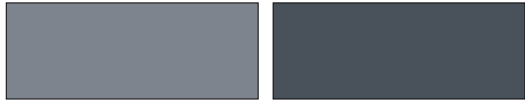


light

\*dark



Charcoal cardstock

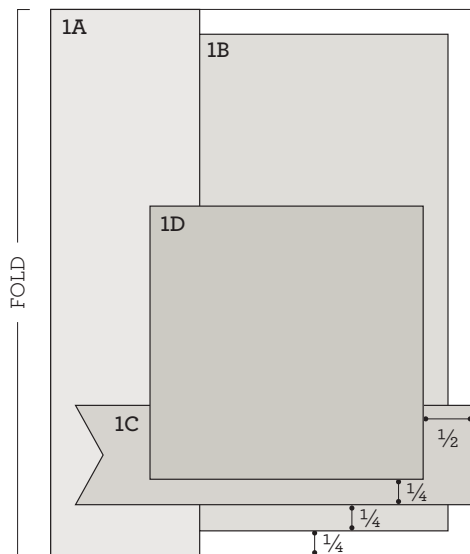


light

\*dark

## Project 1: Make 6

Prepare (6 each):



### 1D:

Paper: light Linen  
Inks: Charcoal, New England Ivy  
Tip: distress edges with Edge Distresser



### 1B:

Paper: light Juniper  
Ink: New England Ivy  
Tip: stamp border twice

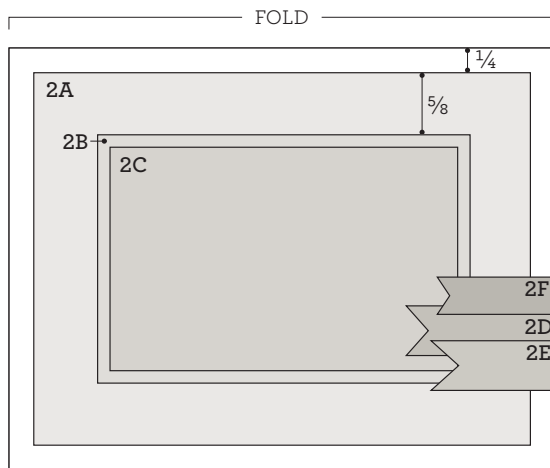


## Assemble:

1. Prepare pieces shown above
2. Attach 1A and 1B to card base
3. Dovetail 1C and attach  
*Tip: distress edges with edge distresser*
4. Attach 1D with thin 3-D foam tape
5. Embellish with sequins

## Project 2: Make 6

Prepare (6 each):



**2C:**  
 Paper: light Linen  
 Inks: Charcoal, Glacier,  
 New England Ivy  
 Tip: stamp plaid slightly off edge

THANKS

**2F:**  
 Paper: light Linen  
 Ink: Charcoal  
 Tip: hand trim



## Assemble:

1. Prepare pieces shown above
2. Attach 2A to card base
3. Attach 2C to 2B  
*Tip: distress edges with edge distresser*
4. Attach 2B with thin 3-D foam tape
5. Dovetail 2D and 2E
6. Attach 2D, 2E, and 2F
7. Embellish with sequins