

Fresh Air

| 3 layouts & 8 optional cards

Gather photos (17 total)

(P) = portrait (L) = landscape

	2 × 2	3 × 3	3 × 4 (P)	4 × 4	4 × 6 (P)	4 × 6 (L)
Project 1	-	4	-	-	1	-
Project 2	-	-	2	2	1	-
Project 3	3	-	2	-	-	2

Separate cuts by Project

Project 1
layout

Project 2
layout

Project 3
layout

Project 4
card

Project 5
card

Project 6
card

Project 7
card

Trim all zip strips and set aside



1G: 12 × ½



1O: 12 × ½



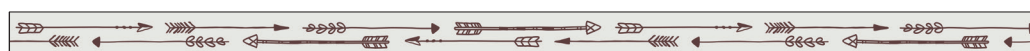
2A: 12 × ½



2E: 3 × ½



2G: 9 × ½



3A: 12 × ½



3G: 12 × ½



3C: 12 × ½



3I: 12 × ½



5B: 5½ × ½
(cut 2)



6A: 4¼ × ½
(cut 2)

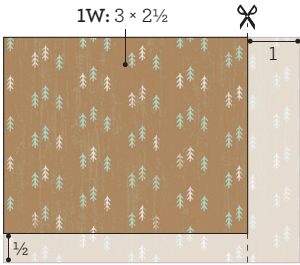
Trim all pocket cards and set aside



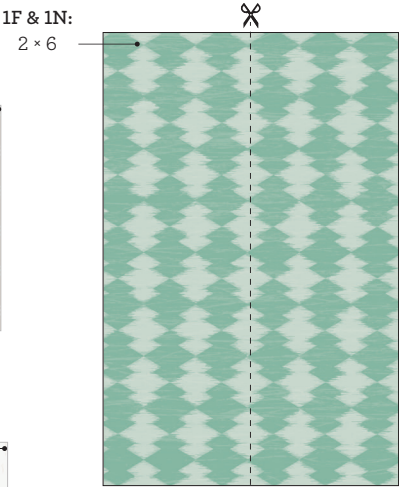
2D: 3 × 4 journaling



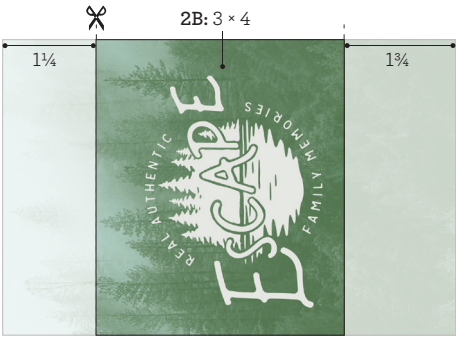
3N: 3 × 4 title



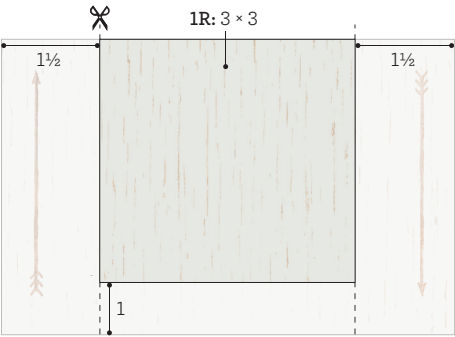
3 × 4 pattern



4 × 6 pattern

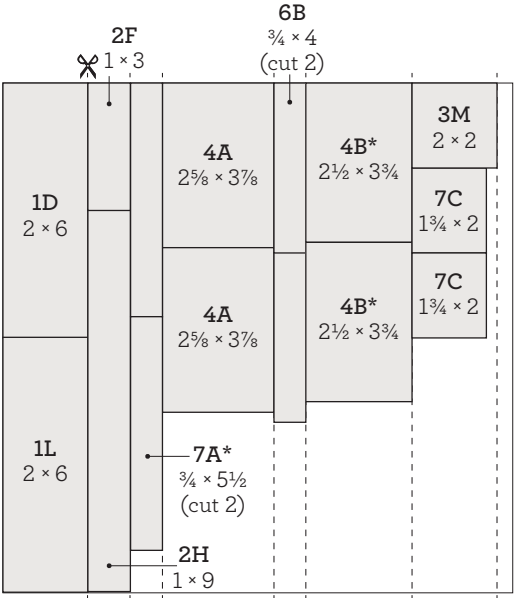


4 × 6 title



4 × 6 pattern

Cut paper | ✂ = first cut



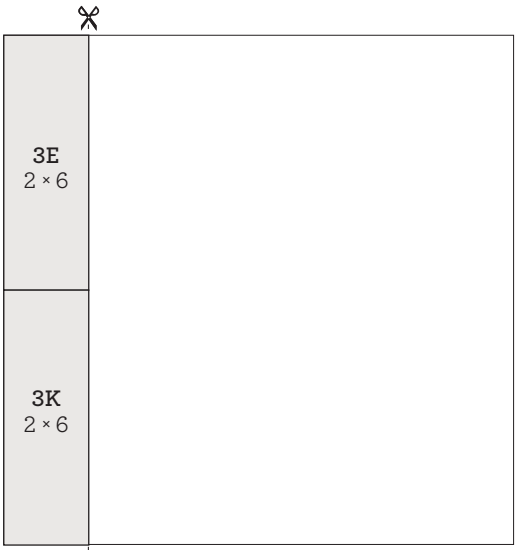
cut orientation



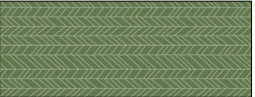
front



*back



cut orientation

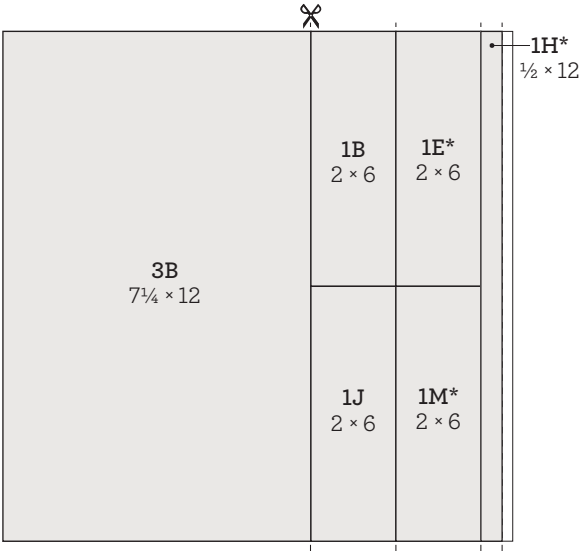


front



*back

blue shapes = suggested Thin Cuts arrangement

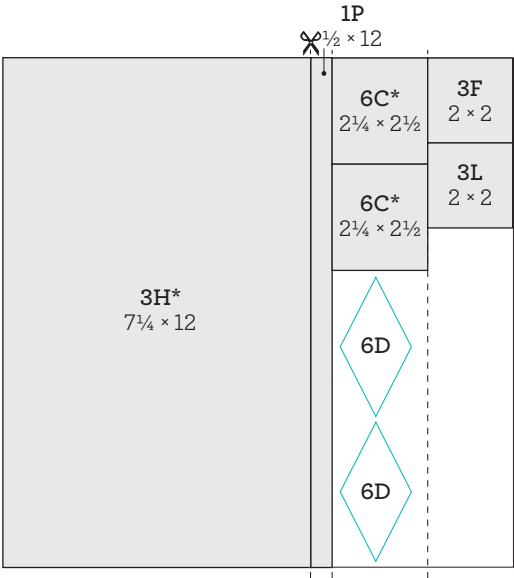


cut orientation



front

*back

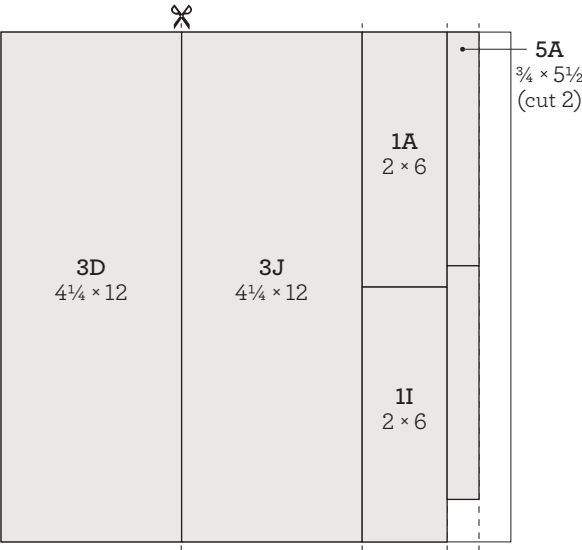


cut orientation



front

*back

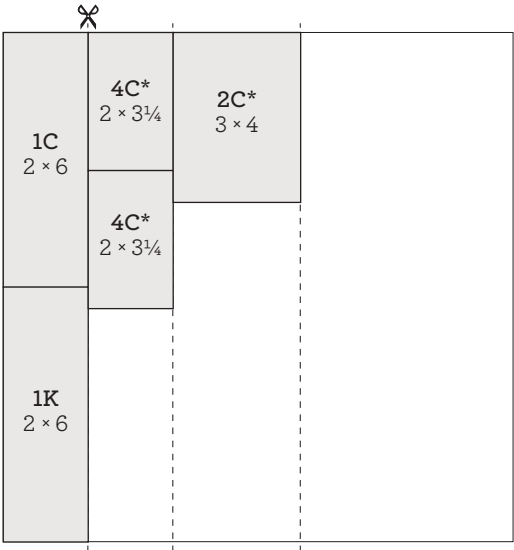


cut orientation



front

*back



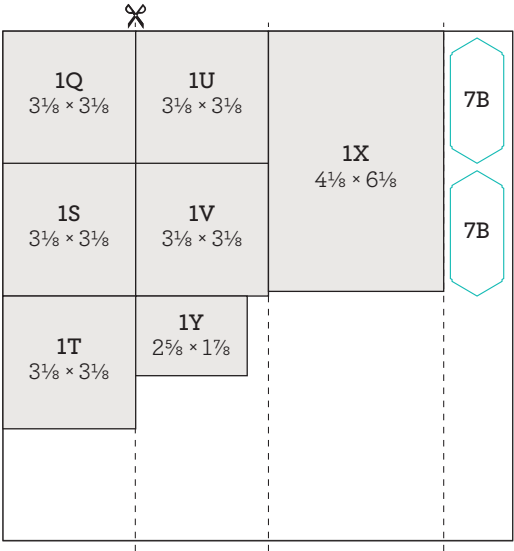
cut orientation



front

*back

blue shapes = suggested Thin Cuts arrangement

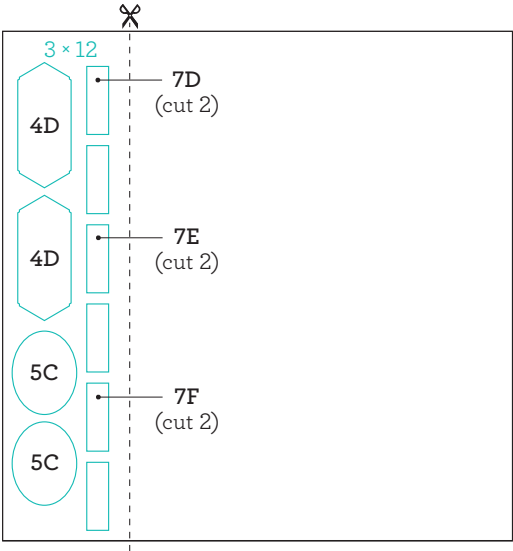


Almond cardstock



light

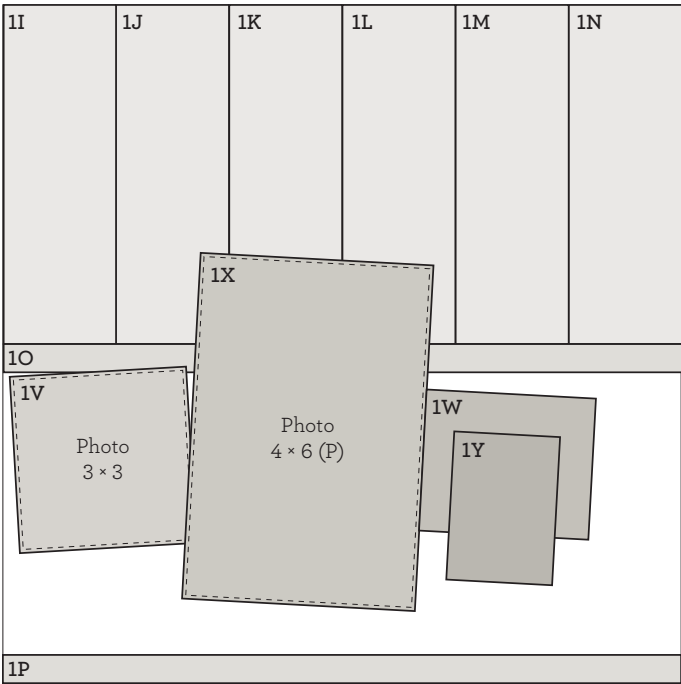
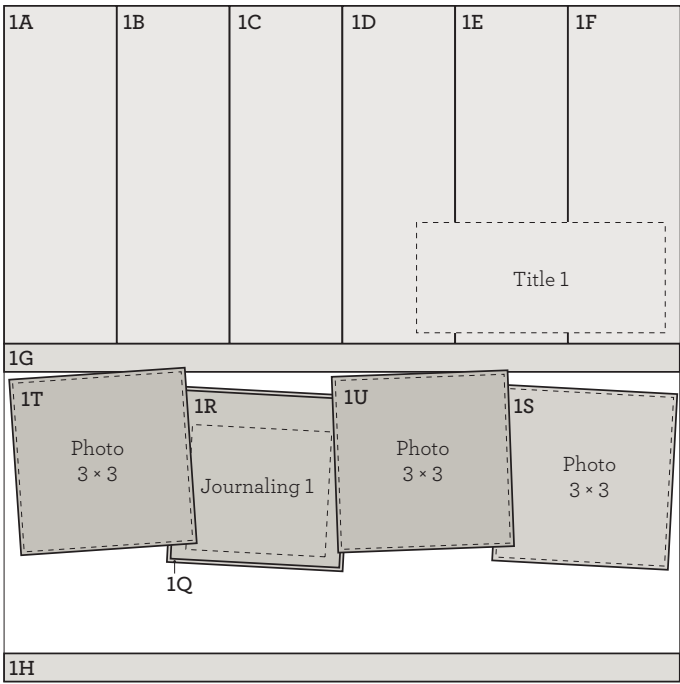
*dark



White Daisy cardstock



Project 1

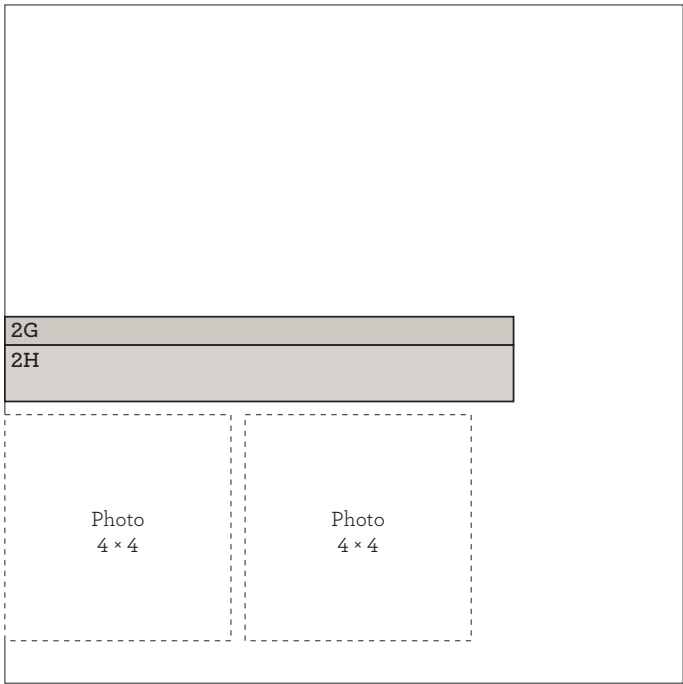
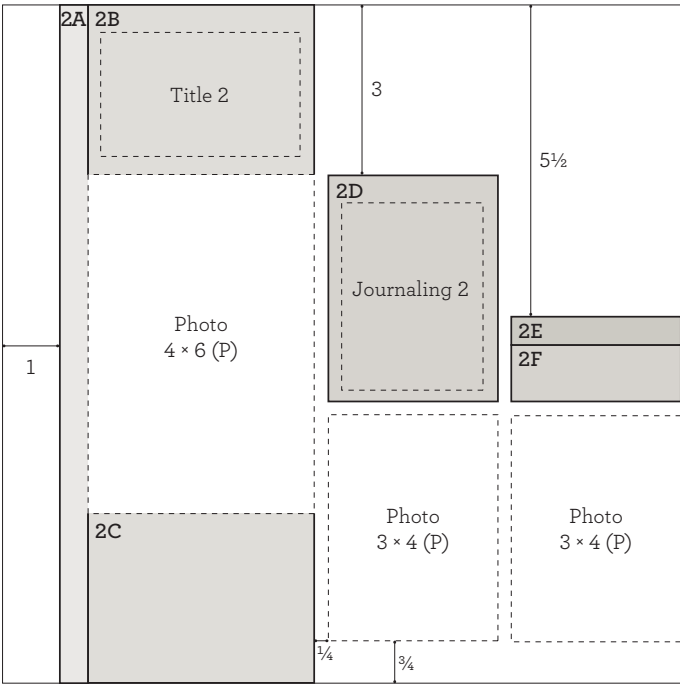


Assemble:

1. Use stucco paper for base pages
2. Attach 1A, 1B, 1C, 1D, 1E, and 1F
3. Attach 1G and 1H
4. Attach 1I, 1J, 1K, 1L, 1M, and 1N
5. Attach 1O and 1P
6. Attach photos to 1S, 1T, 1U, 1V, and 1X
7. Attach 1R to 1Q
8. Attach 1Q and 1S

9. Attach 1T and 1U with thin 3-D foam tape
10. Attach 1V and 1W
11. Attach 1X and 1Y with thin 3-D foam tape
12. Attach title with thin 3-D foam tape
13. Embellish with Complements
Tip: attach a few Complements with thin 3-D foam tape for added dimension

Project 2



Assemble:

1. Use forest paper for base pages
2. Attach 2A
3. Attach 2B, 4 x 6 photo, and 2C
4. Attach 2D, 2E, and 2F
5. Attach 2G and 2H
6. Attach remaining photos
7. Embellish with Complements
Tip: attach a few Complements with thin 3-D foam tape for added dimension
8. Embellish with ribbon
9. Embellish with wood shapes
10. Add journaling

Project 3



Title 3		2½	2¼
3C			
3D			
Photo 4 × 6 (L)		Photo 3 × 4 (P)	
Photo 2 × 2		3F	3E
Photo 2 × 2		Journaling 3	
3B ¾			
3A			
		1¾	

3I			
3J	Photo 4 × 6 (L)	3N	Photo 3 × 4 (P)
3K	3L		
3H ¼	Photo 2 × 2	3M	
	3G		

Assemble:

1. Use White Daisy cardstock for base pages

2. Attach 3A

3. Attach 3B and 3C

4. Attach 3D, 3E, and 3F

5. Attach 3G

6. Attach 3H and 3I

7. Attach 3J and 3K

8. Attach photos
9. Attach 3L, 3M, and 3N

10. Embellish with ribbon

11. Embellish with Complements
Tip: attach a few Complements with thin 3-D foam tape for added dimension

12. Add journaling
Tip: cut strips from scrap Almond cardstock

13. Expand this layout with 6-inch wide Pocket Plus™ Memory Protectors™



front



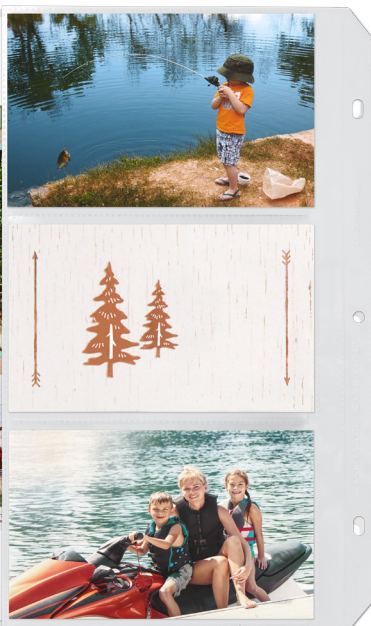
inside



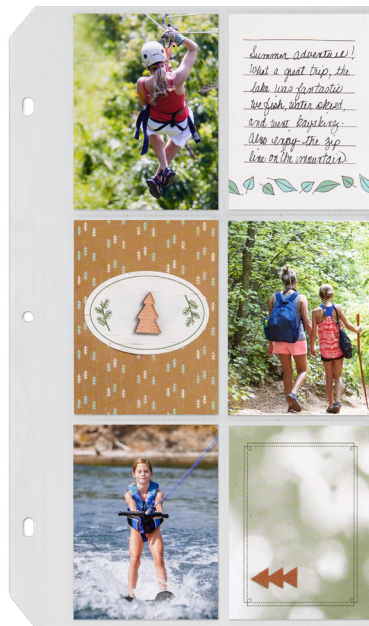
back



Project 3



Pocket Plus™



Project 3



Optional Cardmaking Projects

Project 4: Make 2



Project 5: Make 2



Project 6: Make 2



Project 7: Make 2



Additional Materials Needed:

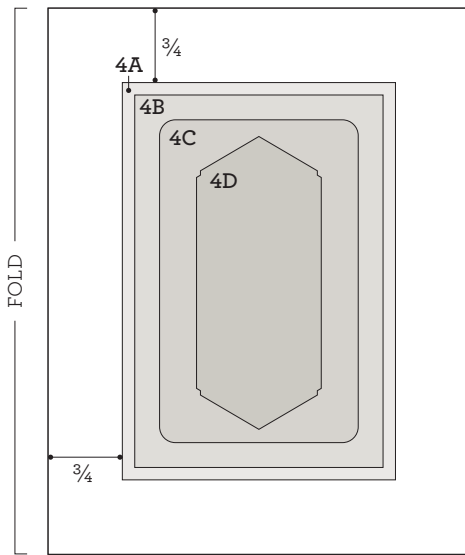
Z4186 Fresh Air Cardmaking Stamp + Thin Cuts
Z2850 Fern Exclusive Inks™ Stamp Pad
Z2865 Juniper Exclusive Inks™ Stamp Pad
Z2835 New England Ivy Exclusive Inks™ Stamp Pad
Z2830 Nutmeg Exclusive Inks™ Stamp Pad
Z1912 Corner Rounder
Z2060 Thin 3-D Foam Tape

Stamp Set:



Project 4: Make 2

Prepare (2 each):



4D:

Paper: White Daisy

Die: banner

Inks: Fern, Juniper, New England Ivy

Tip: ink whole stamp with Juniper, bottom 2/3 with Fern, bottom 1/3 with New England Ivy

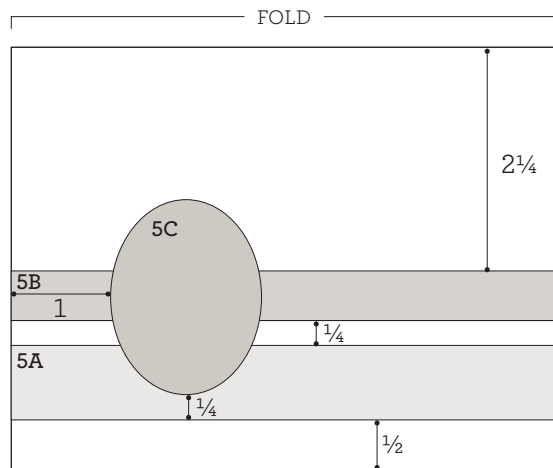


Assemble:

1. Prepare piece shown above
2. Attach 4A to card base
3. Attach 4B
4. Embellish with ribbon
5. Round corners of 4C and attach with thin 3-D foam tape
6. Attach 4D with thin 3-D foam tape
7. Stamp border with New England Ivy ink on card base
8. Embellish with wood shape

Project 5: Make 2

Prepare (2 each):



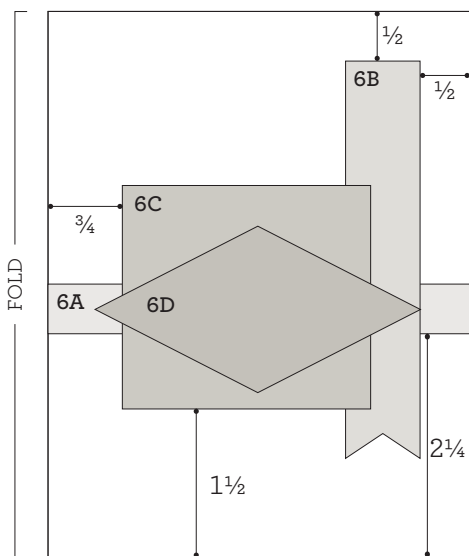
5C:
Paper: White Daisy
Die: oval
Ink: Juniper

Assemble:

1. Prepare piece shown above
 2. Attach 5A to card base
 3. Attach 5B
 4. Embellish with ribbon
 5. Attach 5C with thin 3-D foam tape
 6. Embellish with wood shape
- Tip: attach with thin 3-D foam tape*



Project 6: Make 2



Prepare (2 each):



6C:
Paper: wood slats
Ink: Nutmeg



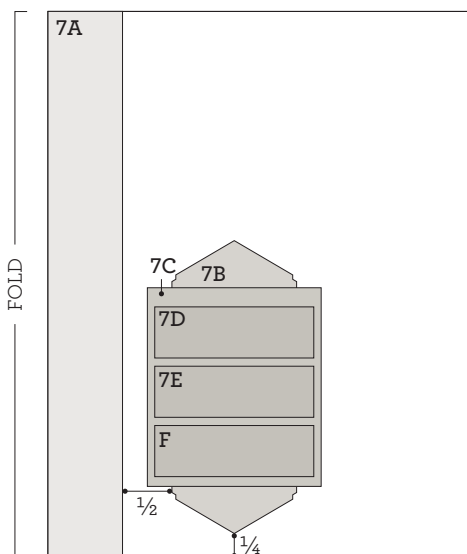
6D:
Paper: Glacier dot
Die: diamond
Ink: New England Ivy

Assemble:

1. Prepare pieces shown above
2. Attach 6A to card base
3. Dovetail 6B and attach
4. Embellish with ribbon
5. Attach 6C with thin 3-D foam tape
6. Stamp tree border with New England Ivy ink on card base
Tip: use masking stamping
7. Attach 6D with thin 3-D foam tape
8. Embellish with wood shape



Project 7: Make 2



Prepare (2 each):



7B:
Paper: light Almond
Die: banner
Ink: Nutmeg



7D, 7E, 7F:
Paper: White Daisy
Die: rectangle
Inks: Fern, Juniper, New England Ivy



Assemble:

1. Attach 7A to card base
2. Attach 7B
3. Attach 7C
4. Attach 7D, 7E, and 7F
5. Stamp arrow with Fern, Juniper, and New England Ivy inks on card base
6. Embellish with ribbon