

Central Park

3 layouts & 6 optional cards

Gather photos (13 total)

(P) = portrait (L) = landscape

	3 × 3	3 × 4 (L)	4 × 6 (P)	4 × 6 (L)
Project 1	3	1	1	-
Project 2	-	3	-	1
Project 3	-	3	1	-

Separate cuts by Project

Project 1
layout

Project 2
layout

Project 3
layout

Project 4
card

Project 5
card

Project 6
card

Trim all zip strips and set aside



1F: 12 × ½



1E: 9 × ½



2A: 12 × ½



2B: 12 × ½



3A: 12 × ½



3B: 12 × ½



3K: 8 × ½

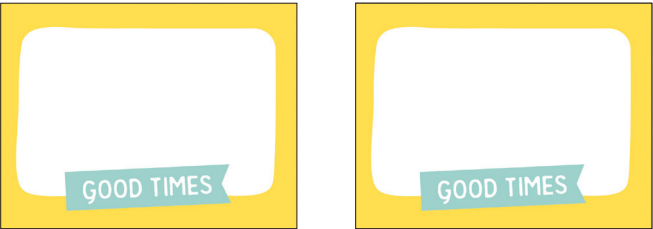


3J: 4 × ½



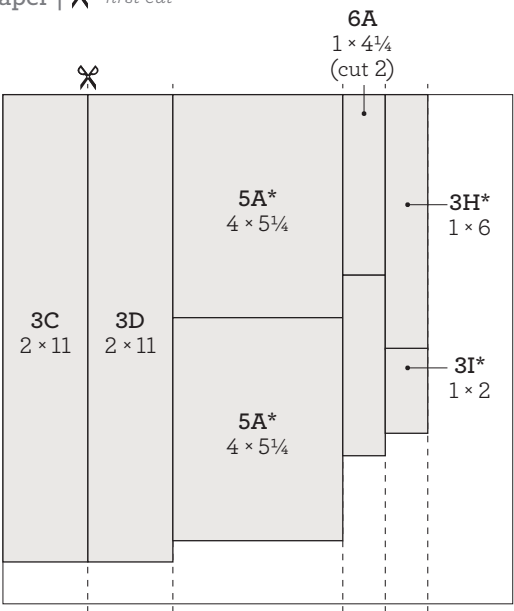
6B: 4¼ × ½
(cut 2)

Trim all pocket cards and set aside



2I & 3G: 3 × 4 journaling

Cut paper | ✂ = first cut



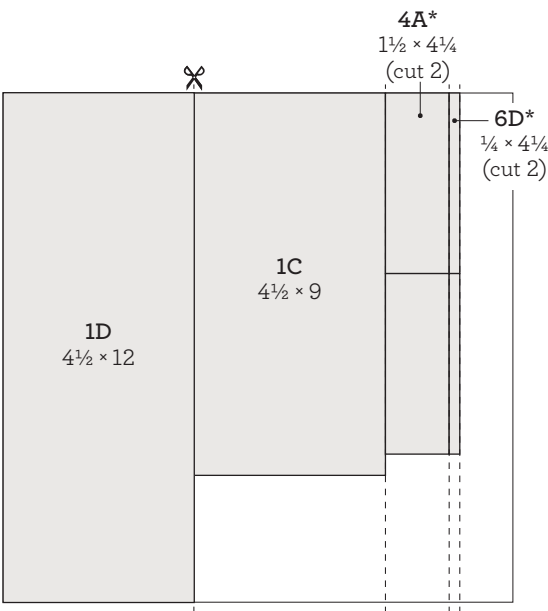
cut orientation



front



*back



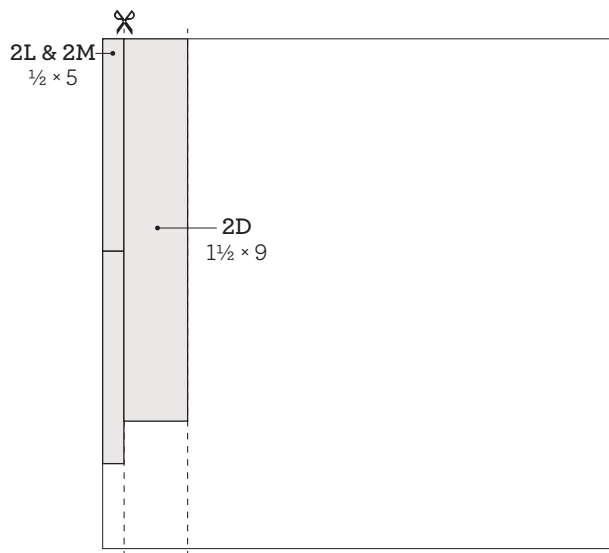
cut orientation



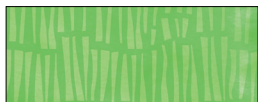
front



*back



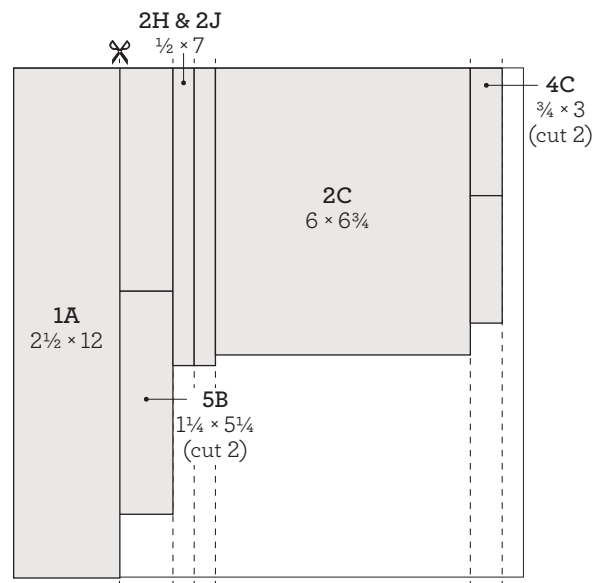
cut orientation



front



*back



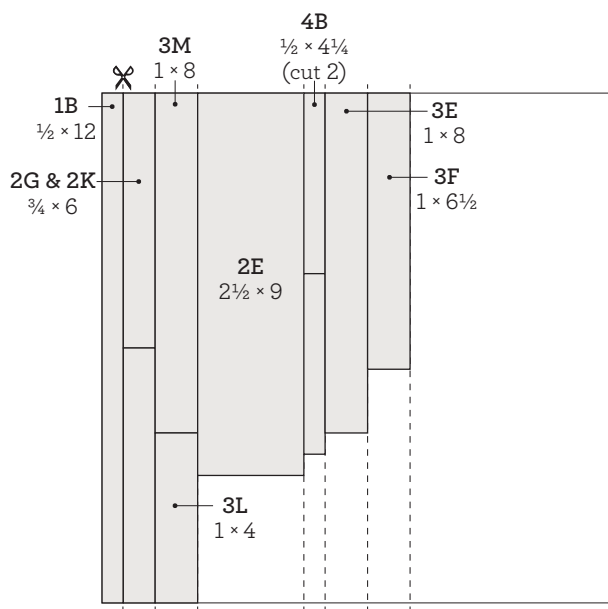
cut orientation



front



*back



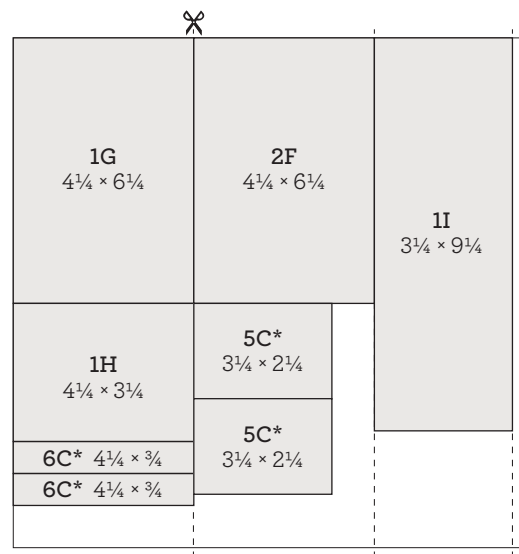
cut orientation



front



*back



Pacifica cardstock

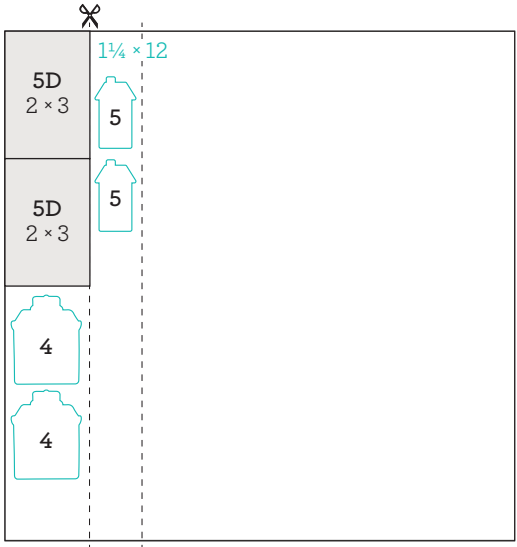


dark



*light

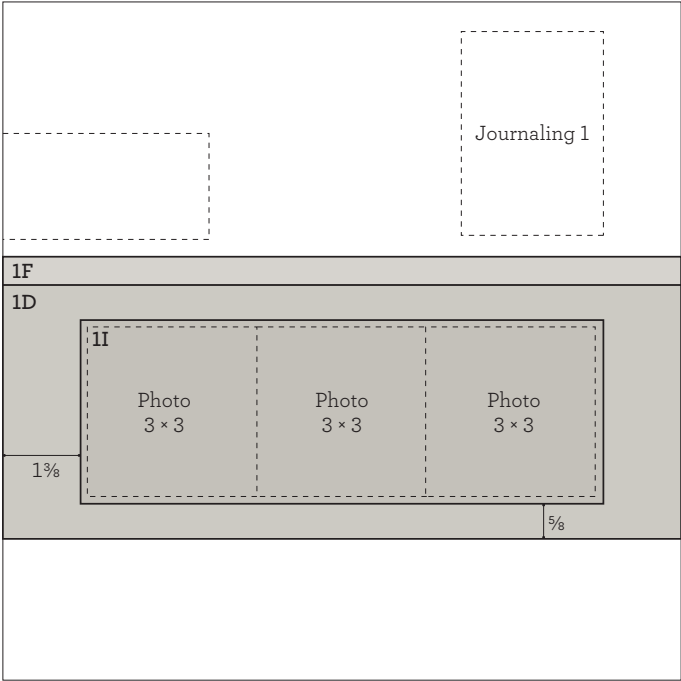
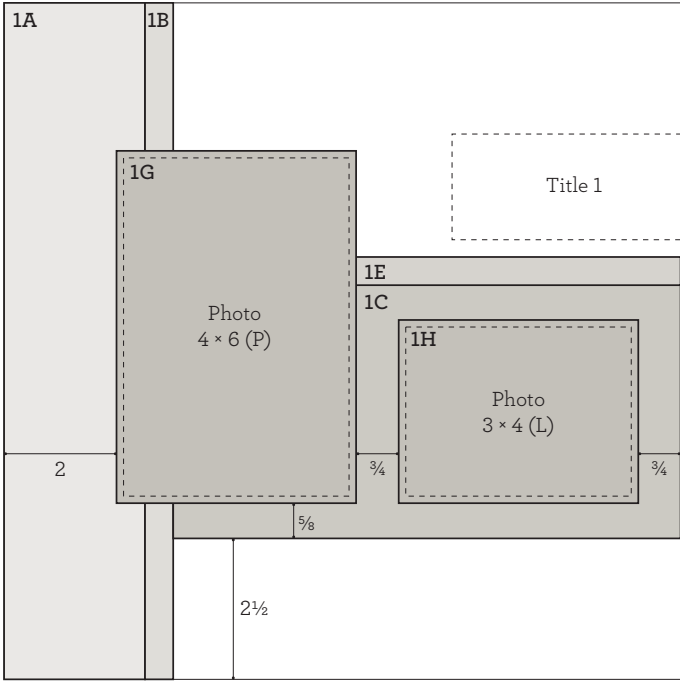
blue shapes = suggested Thin Cuts arrangement



White Daisy cardstock



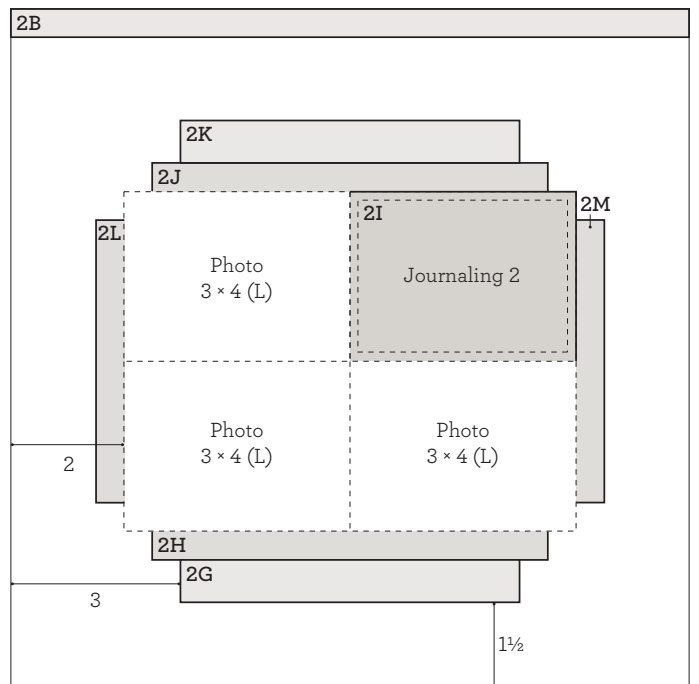
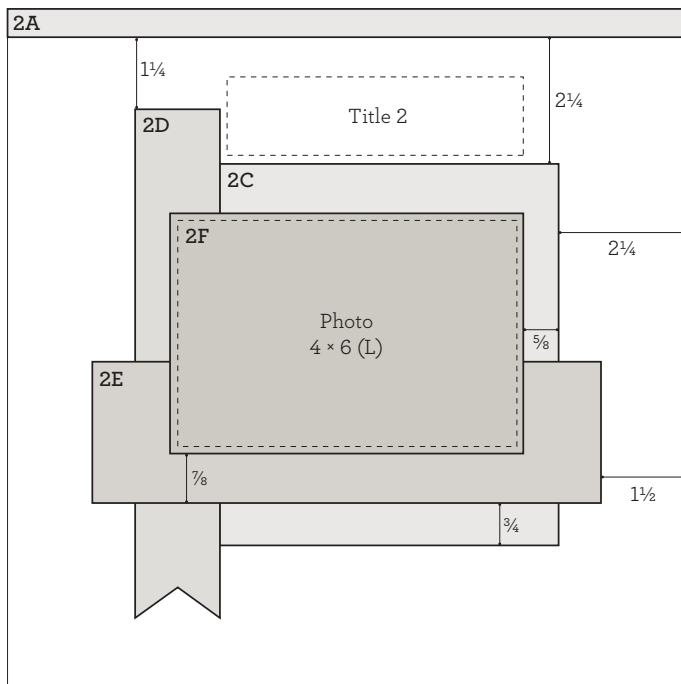
Project 1



Assemble:

1. Use White Daisy cardstock for base pages
2. Attach 1A and 1B
3. Attach 1C, 1D, 1E, and 1F
4. Attach 1G, 1H, and 1I
5. Attach title
6. Attach photos
7. Embellish with Complements
Tip: attach a few Complements with thin 3-D foam tape for added dimension
8. Embellish with sequins
9. Add journaling

Project 2



Assemble:

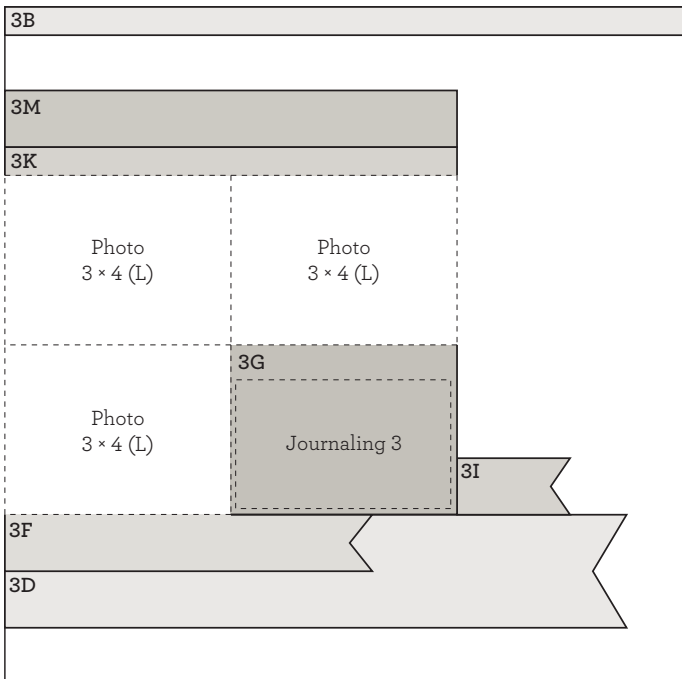
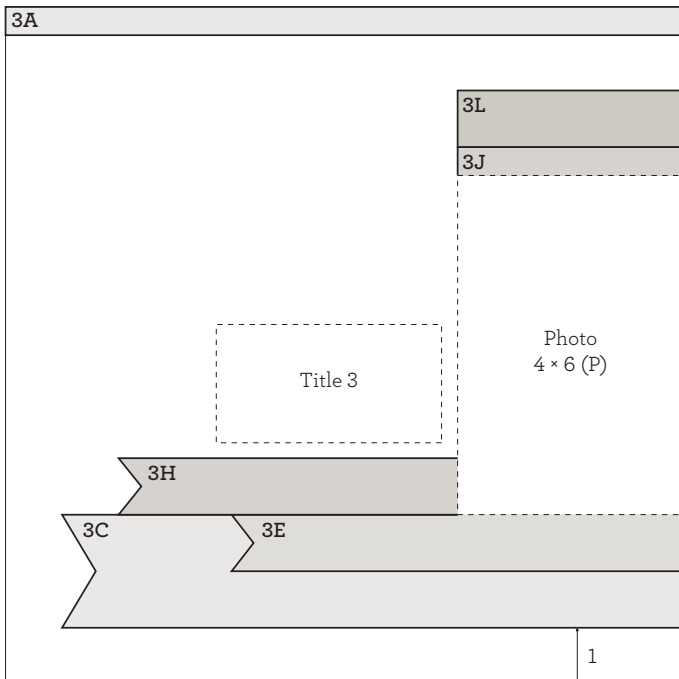
1. Use white hot air balloon paper for base pages
2. Attach 2A and 2B
3. Attach 2C
4. Dovetail 2D and attach
5. Attach 2E
6. Attach photo to 2F
7. Attach 2F with thin 3-D foam tape
8. Attach title
9. Attach 2G and 2H

Tip: use alphabet stickers and Complements

10. Attach remaining photos and 2I
11. Attach 2J, 2K, 2L, and 2M
12. Embellish with Complements
13. Embellish with sequins
14. Add journaling

Tip: attach a few Complements with thin 3-D foam tape for added dimension

Project 3



Assembly:

1. Use Glacier grid paper for base pages
2. Attach 3A and 3B
3. Dovetail 3C and 3D and attach
4. Dovetail 3E and 3F and attach
5. Attach photos
6. Attach 3G
7. Dovetail 3H and 3I and attach
8. Attach 3J, 3K, 3L, and 3M

9. Attach title
10. Embellish with Complements
Tip: attach a few Complements with thin 3-D foam tape for added dimension
11. Embellish with sequins
12. Add journaling
13. Expand this layout with 4-inch wide Pocket Plus™ Memory Protectors™

Optional Pocket Plus™ Add-on | 4-inch wide



front

inside

back



Project 3

Pocket Plus™

Project 3

Optional Cardmaking Projects

Project 4: Make 2



Project 5: Make 2



Project 6: Make 2



Stamp Set:

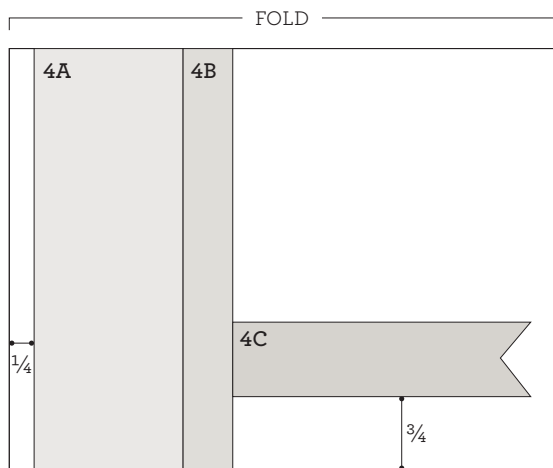


Additional Materials Needed:

- Z4179 Central Park Cardmaking Stamp + Thin Cuts
- Z2841 Glacier Exclusive Inks™ Stamp Pad
- Z2825 Mink Exclusive Inks™ Stamp Pad
- Z2892 Pacifica Exclusive Inks™ Stamp Pad
- X254 White Cards & Envelopes Value Pack
- Z2060 Thin 3-D Foam Tape

Project 4: Make 2

Prepare (2 each):



Paper: White Daisy
Die: large house
Ink: Glacier

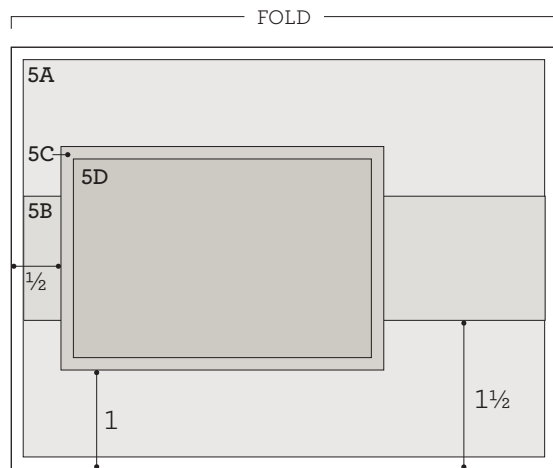


Assemble:

1. Prepare piece shown above
2. Attach 4A and 4B to card base
3. Dovetail 4C and attach
4. Stamp sentiment with Mink and Pacifica inks on card base
5. Attach house with thin 3-D foam tape
6. Embellish with sequins

Project 5: Make 2

Prepare (2 each):



5D:
Paper: White Daisy
Inks: Glacier, Pacifica



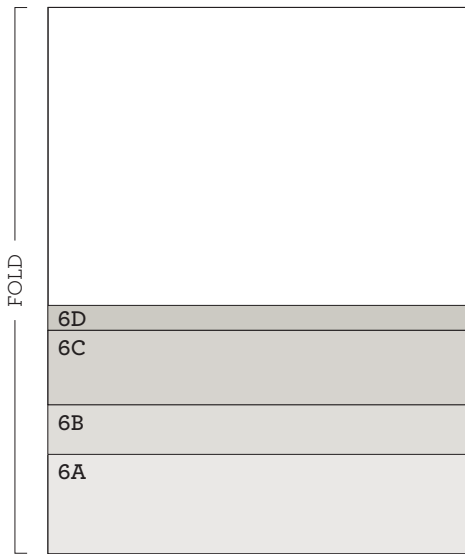
Paper: White Daisy
Die: small house
Ink: Pacifica



Assemble:

1. Prepare pieces shown above
2. Attach 5A to card base
3. Attach 5B
4. Attach 5D to 5C
5. Attach 5C and house with thin 3-D foam tape
6. Embellish with sequins

Project 6: Make 2



Assemble:

1. Attach 6A, 6B, 6C, and 6D to card base
2. Stamp sentiment with Glacier, Mink, and Pacifica inks on card base
3. Embellish with sequins