

You Are More | 12 Cards

Project 1: Make 6



Project 2: Make 6



Additional Materials Needed:

Z3271 Archival Black Exclusive Inks™ Stamp Pad
 Z2849 Peacock Exclusive Inks™ Stamp Pad
 Z3400 Shimmer Brush—Bashful
 Z3348 Thin Cuts—Scallop Border
 3505 Watercolor Pencils
 Z2060 Thin 3-D Foam Tape

Exclusive Stamp Set:

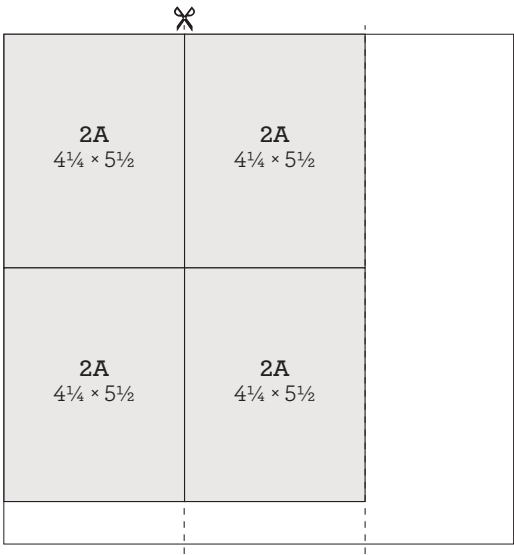
Love YOU awesome
 YOU ARE LOVED
 wonderful
 BEAU
 TIFUL
 and
 ADORED
 anything
 chocolate
 cupcakes
 flower

Trim all zip strips and set aside

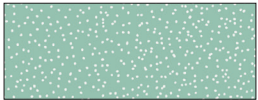


1C: $3\frac{3}{4} \times \frac{1}{2}$ (cut 6)

Cut paper | ✂ = first cut



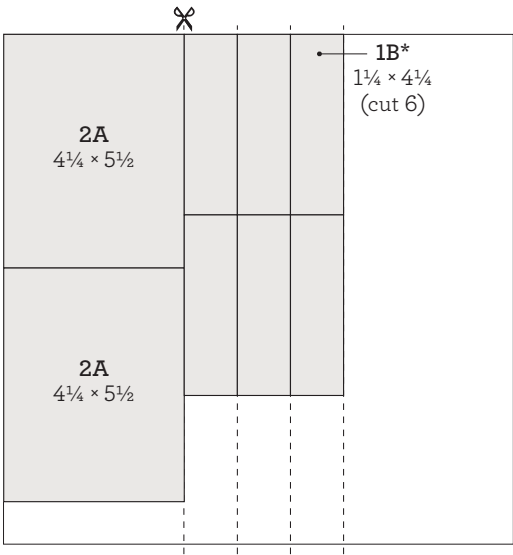
cut orientation



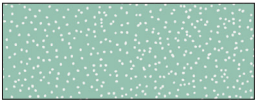
front



*back



cut orientation

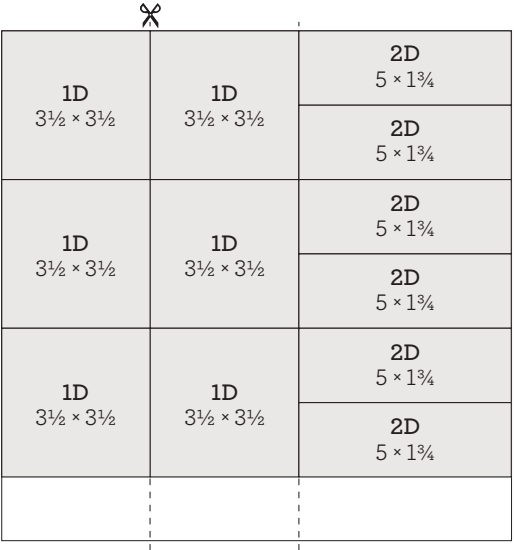


front

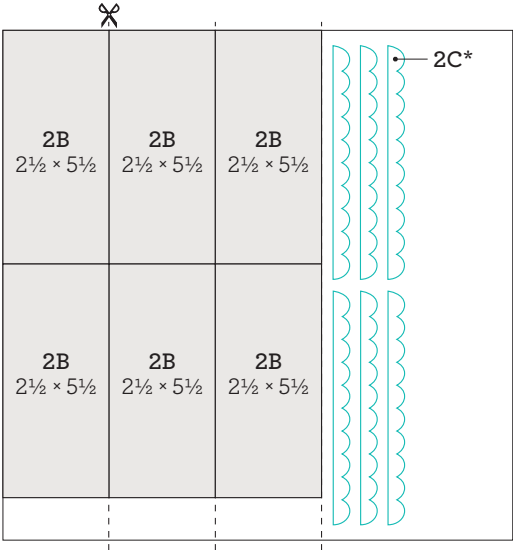


*back

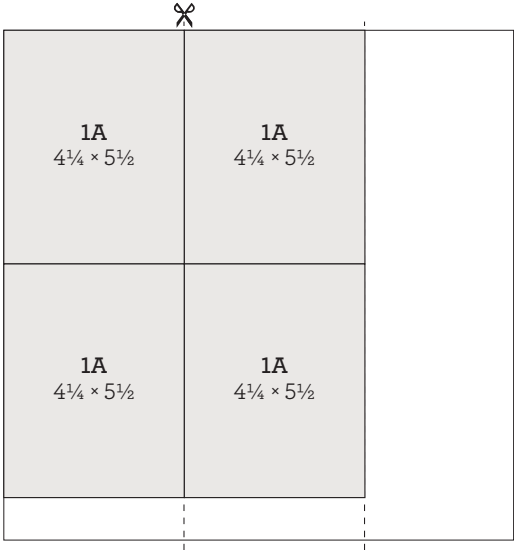
blue shapes = suggested Thin Cuts arrangement



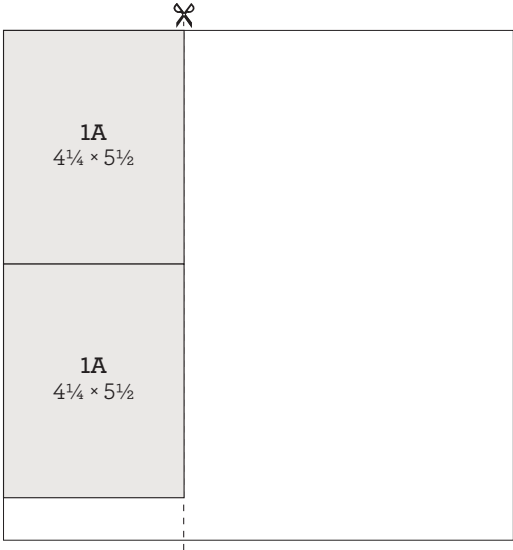
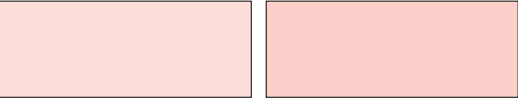
Peacock cardstock



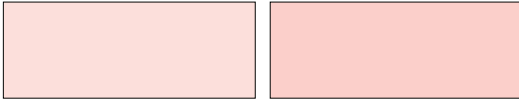
Peacock cardstock

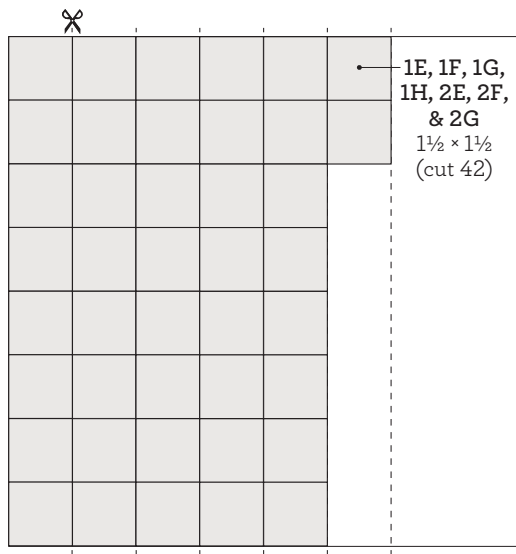


Bashful cardstock



Bashful cardstock

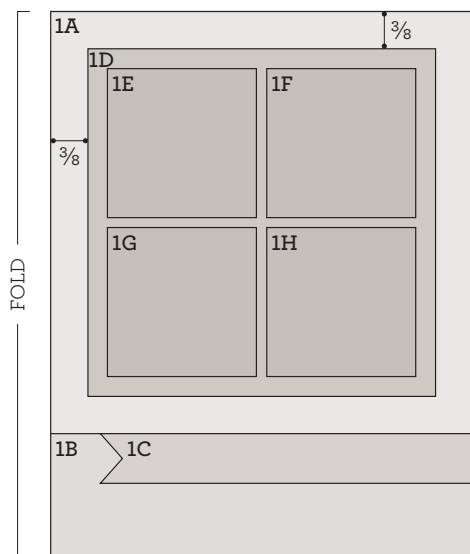




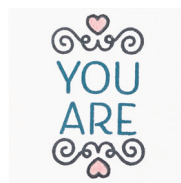
White Daisy cardstock



Project 1: Make 6



Prepare (6 each):



1E:
Paper: White Daisy
Inks: Archival Black, Peacock
Tip: accent with shimmer brush



1F:
Paper: White Daisy
Ink: Archival Black
Tip: accent with shimmer brush



1G:
Paper: White Daisy
Ink: Archival Black
Tip: accent with shimmer brush



1H:
Paper: White Daisy
Inks: Archival Black, Peacock
Tip: color with watercolor pencils, accent with shimmer brush

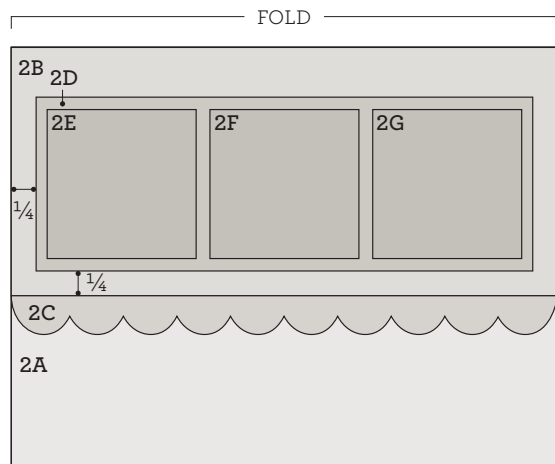
Assemble:

1. Prepare pieces shown above
2. Do not attach 1A to card base
3. Attach 1B to 1A
4. Dovetail 1C and attach
5. Embellish with twine
Tip: wrap twine around 1A and secure on back
6. Attach 1A to card base
7. Attach 1D with thin 3-D foam tape
8. Attach 1E, 1F, 1G, and 1H
9. Embellish with pearls



Project 2: Make 6

Prepare (6 each):



2C:

Paper: dark Peacock
Die: scallop border



2E:

Paper: White Daisy
Inks: Archival Black, Peacock
Tip: accent with shimmer brush



2F:

Paper: White Daisy
Inks: Archival Black, Peacock
Tips: color with watercolor pencils, accent with shimmer brush



2G:

Paper: White Daisy
Inks: Archival Black, Peacock



Assemble:

1. Prepare pieces shown above
2. Do not attach 2A to card base
3. Attach 2B and 2C to 2A
4. Embellish with twine
Tip: wrap twine around 2A and secure on back
5. Attach 2A to card base
6. Attach 2D with thin 3-D foam tape
7. Attach 2E, 2F, and 2G
8. Embellish with pearls