

You've Got Class

| 14 page project



Additional Materials Needed:

- Z3373 School Kids Stamp + Thin Cuts
- Z2895 Lagoon Exclusive Inks™ Stamp Pad
- Z899 Black Memento™ Ink Pad OR
- Z4189 Intense Black Exclusive Inks™ Stamp Pad
- Z3318 Thin Cuts—Basic Circles
- Z3132 Watercolor Paints
- Z3225 Waterbrush—Medium Round
- Z1204 Bone Folder
- Z2060 Thin 3-D Foam Tape

Exclusive Stamp Set:



Gather photos (49 total)

(P) = portrait (L) = landscape

	3 × 3	3 × 4 (P)	3 × 4 (L)	4 × 6 (P)	4 × 6 (L)
Page 1	-	2	-	1	-
Page 2	-	-	3	1	-
Page 3	1	2	-	1	-
Page 4	-	2	-	1	-
Page 5	-	-	3	1	-
Page 6	-	1	-	1	1
Page 7	-	3	-	1	-
Page 8	-	-	3	1	-
Page 9	-	3	-	1	-
Page 10	-	-	2	1	-
Page 11	-	-	3	1	-
Page 12	-	2	-	1	-
Page 13	-	-	2	1	-
Page 14	-	2	-	1	-

Getting Started:

- Gather all additional materials needed.
- Trim all zip strips and set aside. The zip strip is the ½" accent paper along the top of each sheet.
- Check the cut orientation below each cutting guide image. This will show you how to cut the paper, keeping the patterns on your project pieces facing the right direction.
- Light grey pieces on your cutting guide are project pieces. White pieces are left over paper.
- As you cut the paper, sort the pieces as indicated in the cutting guide, creating a stack for each project.

Key:

✂ = first cut | * = use back of paper

■ = suggested stamp arrangement | ■ = suggested Thin Cuts arrangement | ■ = suggested Cricut® cut arrangement
(See project instructions for ink color and other details)

Cutting Diagrams:

zip strips



6B: 12 × ½



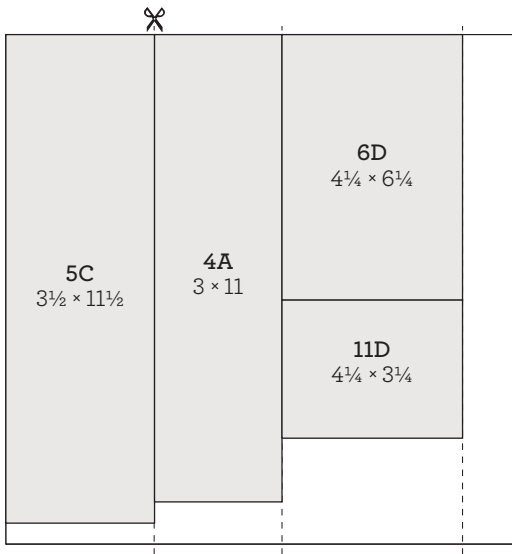
6F: 12 × ½



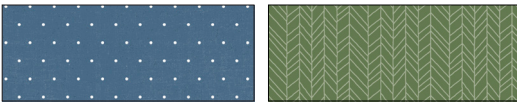
11A: 12 × ½



14D: 12 × ½

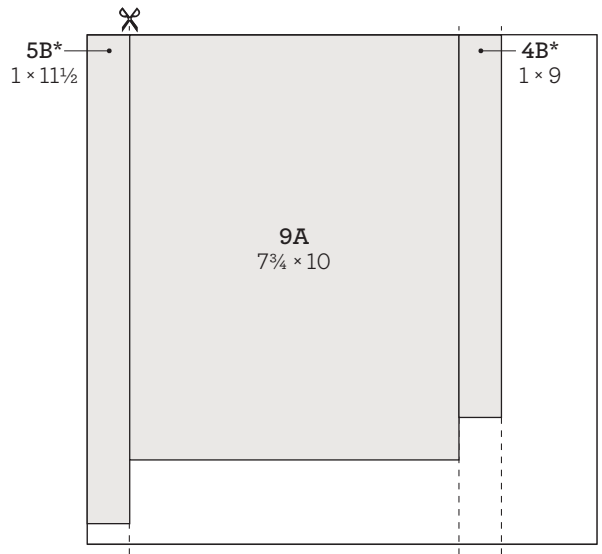


cut orientation

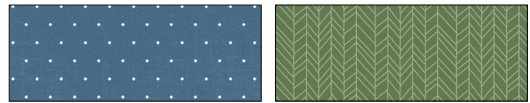


front

*back

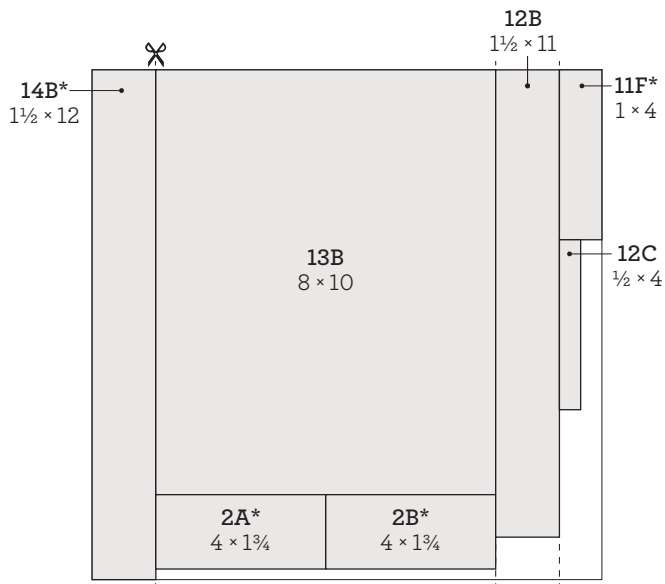


cut orientation

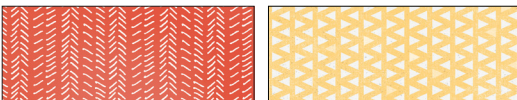


front

*back

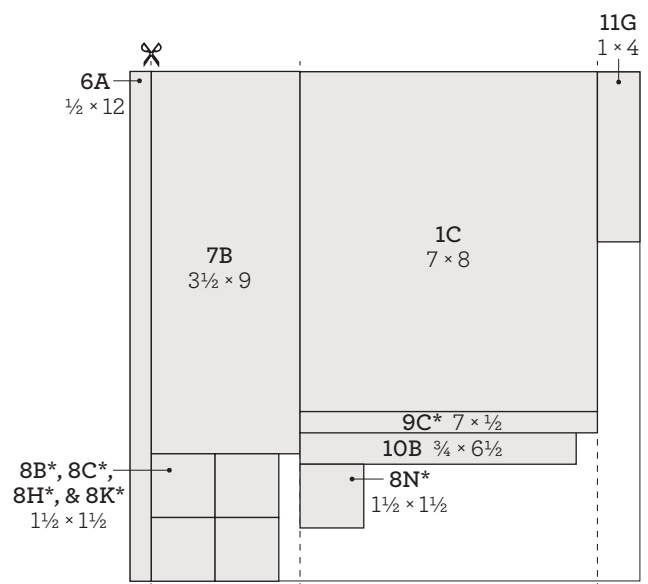


cut orientation



front

*back

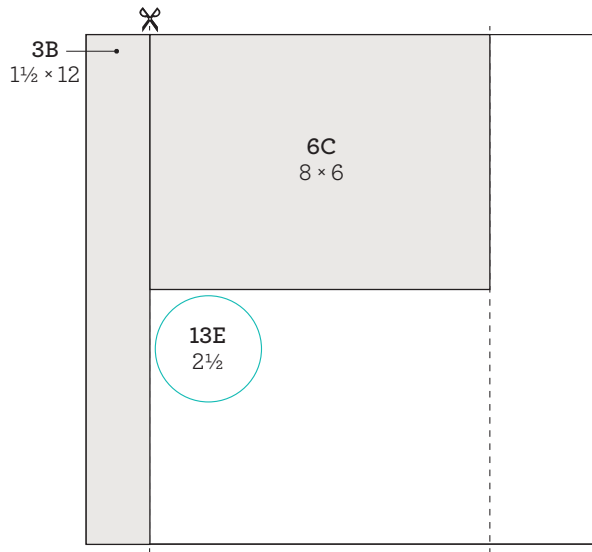


cut orientation

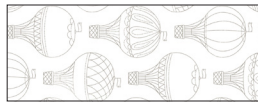


front

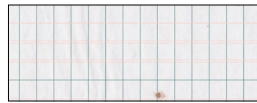
*back



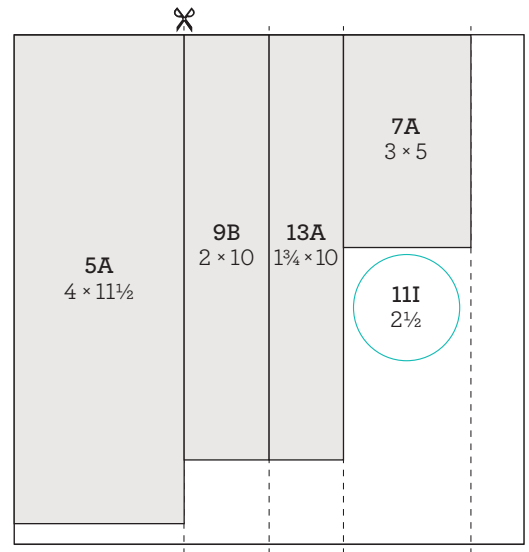
cut orientation



front



*back



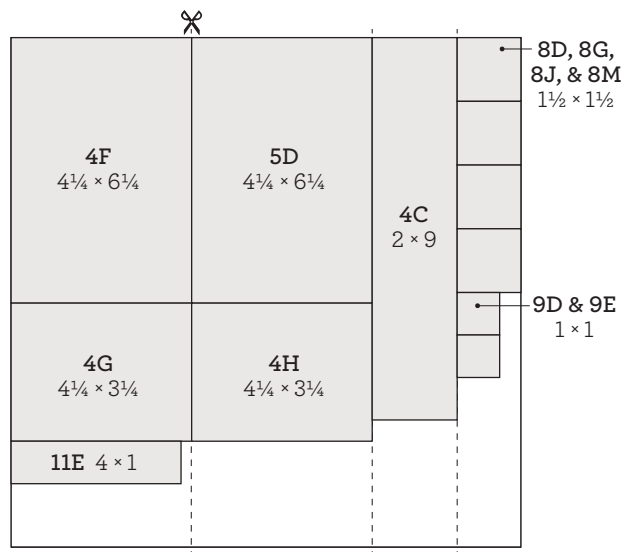
cut orientation



front



*back



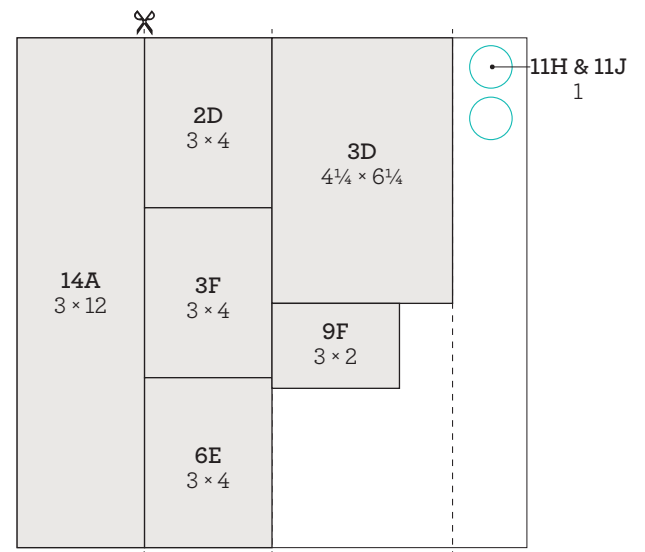
Juniper cardstock



light



*dark



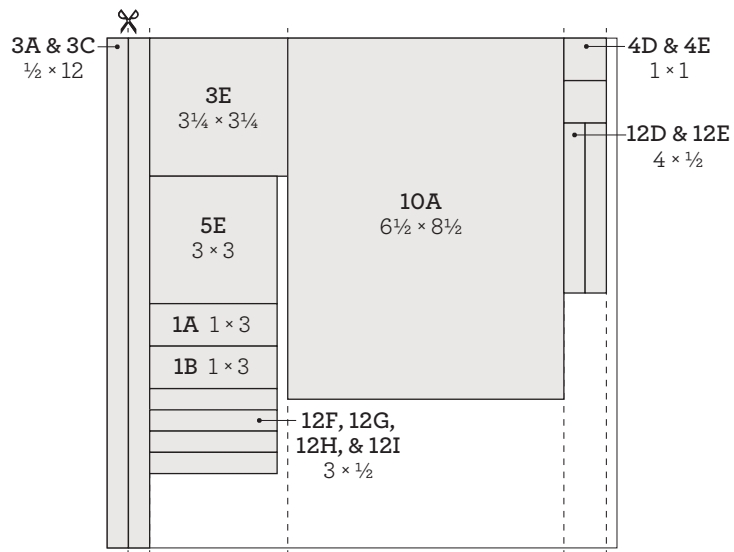
Linen cardstock



light



*dark

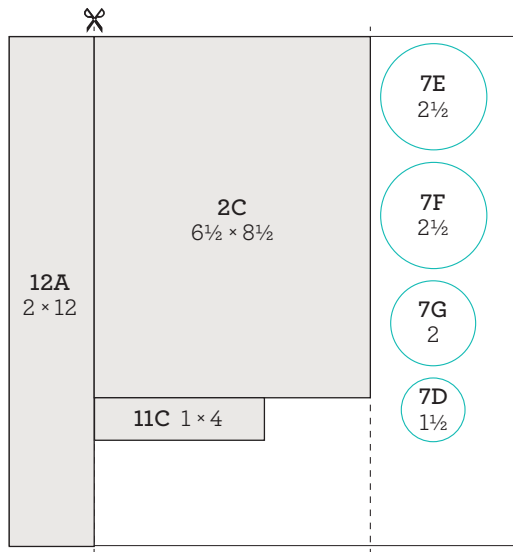


Lagoon cardstock

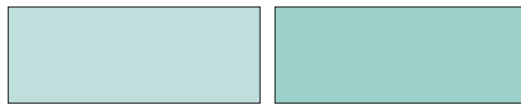


light

*dark

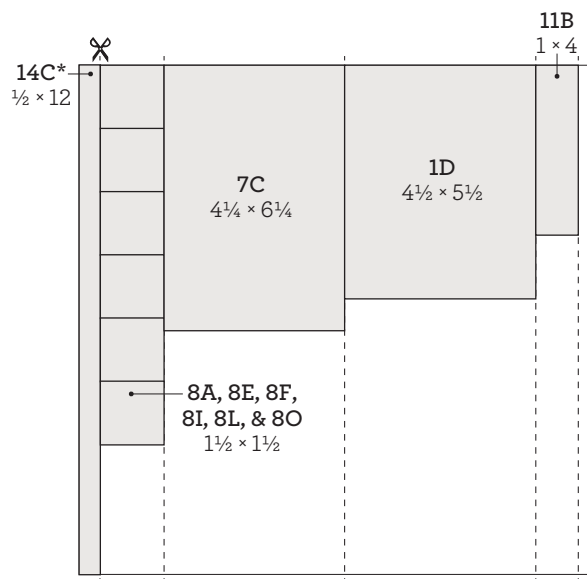


Glacier cardstock



light

*dark

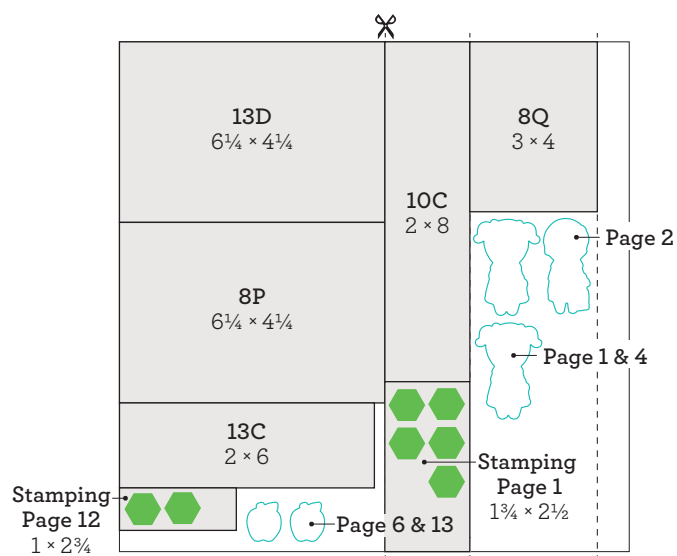


Sapphire cardstock



dark

*light



White Daisy cardstock



True Fit Folio Dividers:

Step 1: Score 6 sheets of White Daisy cardstock 1" from edge and fold.
Tip: Line up edge of cardstock with 1" mark on trimmer and score down trimmer trough with a bone folder. Press lightly.



Step 2: Attach the scored White Daisy cardstock to inside of 6 True Fit Folios.

Tip: Line up fold of cardstock with inside fold of folio and attach.

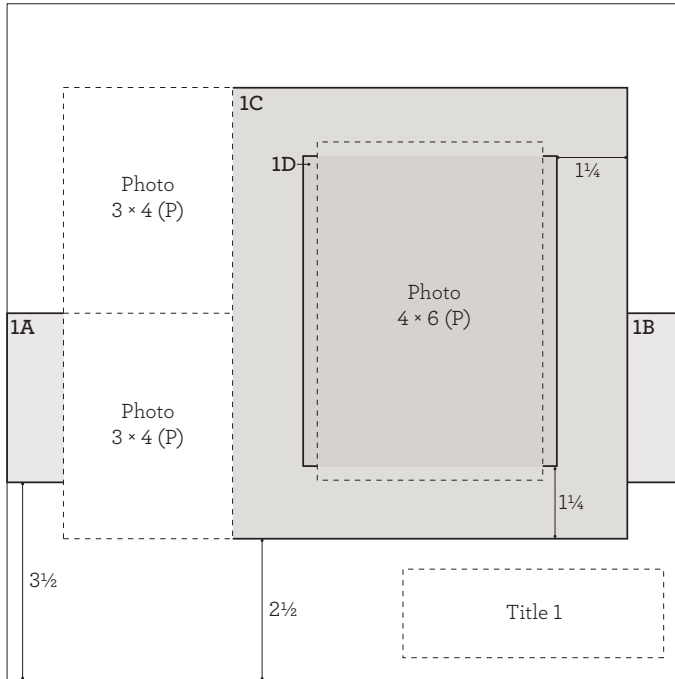


Flip Flaps™

Throughout this workshop you will be using 3" x 4" Flip Flaps.™ Flip Flaps are clear pockets that attach to your pages to include additional photos and journaling. They adhere on one edge and can then be flipped up to reveal whatever is placed underneath it

To attach Flip Flap, fold the adhesive strip under the pocket (with the opening in the inside crease). Remove the backing from the adhesive and attach it to your project.





Paper: White Daisy
 Die: school kid of your choice
 Ink: Black
 Tip: Add color with watercolor paints and waterbrush once ink is dry.

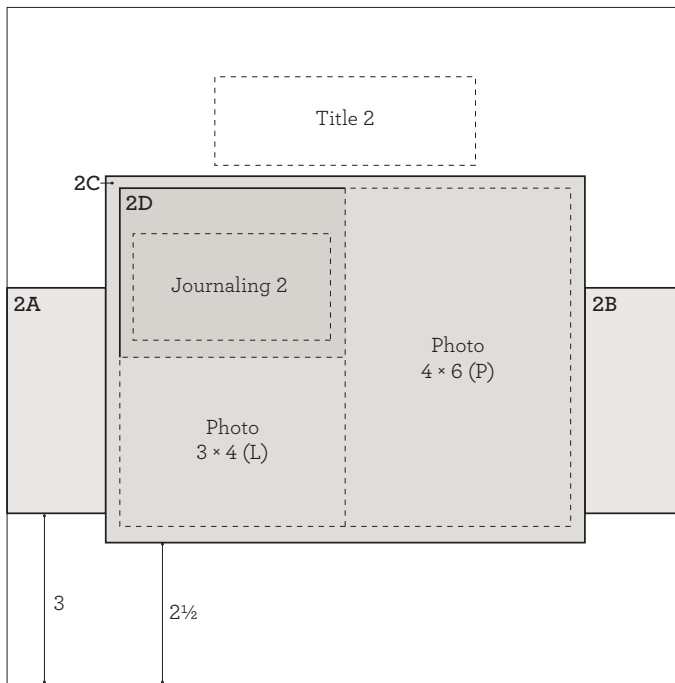


Paper: White Daisy
 Ink: Lagoon
 Tips: Use first-, second-, and third-generation stamping and hand trim.
 Technique: Ink stamp with Lagoon. Stamp on White Daisy cardstock to create first image (first-generation), then without re-inking stamp again on cardstock to create a second, lighter image (second-generation). Create lightest image by stamping a third time, without re-inking (third-generation). (Repeat first- and second-generation stamping for remaining images.)



Assemble:

1. Use front of True Fit Folio (without a divider added) as base page
2. Attach 1A and 1B
3. Attach 1C
4. Attach 1D
5. Attach photos
6. Stamp title with Black ink
7. Stamp apple with Black ink
 Tip: Add color with watercolor paints and waterbrush once ink is dry.
8. Stamp globe with Lagoon ink
9. Stamp paint splatters with Black ink
10. Attach prepared pieces
11. Embellish with sparkles



Prepare:



Paper: White Daisy
 Die: school kid of your choice
 Ink: Black
 Tip: Add color with watercolor paints and waterbrush once ink is dry.



Assemble:

1. Use True Fit Folio as base page (back of Page 1)
2. Attach 2A and 2B
3. Attach 2C
4. Attach 2D
5. Attach 4 x 6 photo
6. Attach 3 x 4 horizontal Flip Flap where 3 x 4 photo will go
 Tip: Slightly overlap 4 x 6 photo and 2D, as shown.
7. Insert two 3 x 4 photos in Flip Flap
8. Attach 3 x 4 photo below 2D, under Flip Flap
9. Use watercolor paints and waterbrush to add a light wash of color where title will go
10. Stamp alphabet border twice with Black ink
 Tip: Mask on right side, lining up with mat above.

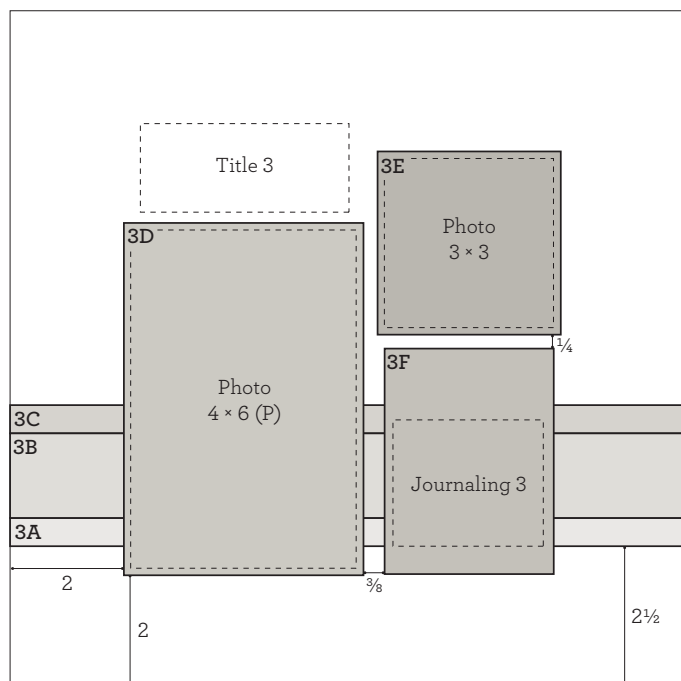
Technique: Place a scratch piece of paper, or sticky note, on your project to cover what you don't want stamped. Stamp your image onto the project and remove the mask.

11. Stamp banners with Lagoon ink

Tip: Use second-generation stamping for the middle banner.

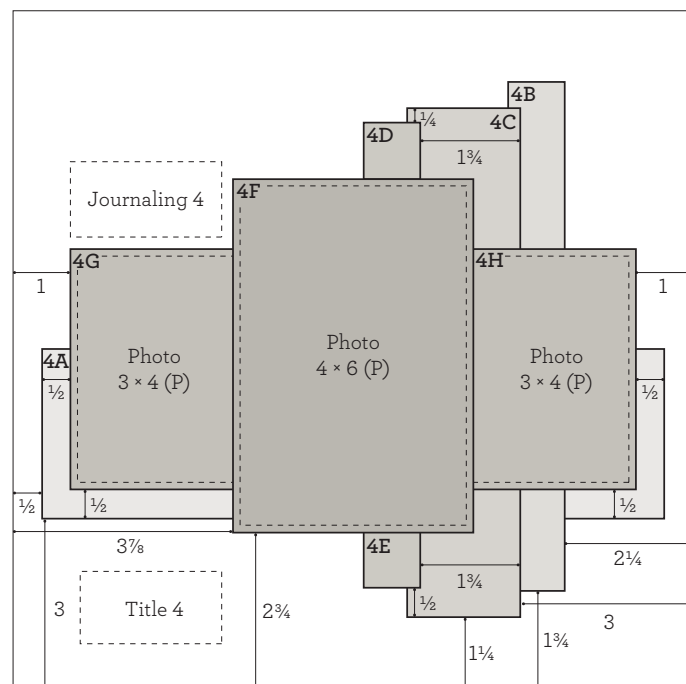
Technique: After stamping first banner, stamp the second banner without re-inking. (Re-ink again and stamp the third banner.)

12. Stamp title with Black ink
13. Stamp heart with Black ink
14. Stamp paint splatters with Lagoon ink
15. Attach school kid with thin 3-D foam tape
16. Embellish with sparkles
17. Add journaling



Assemble:

1. Use front of True Fit Folio as base page
2. Attach 3A, 3B, and 3C
3. Attach 3D
4. Attach 3 x 4 vertical Flip Flap where 3F will go
5. Insert 3F and one 3 x 4 photo in Flip flap
6. Attach 3E
7. Attach 3 x 4 photo below 3E, under Flip Flap
8. Attach 4 x 6 photo
9. Stamp title with Black ink
10. Stamp school kid with Black ink
Tip: Add color with watercolor paints and waterbrush once ink is dry.
11. Stamp stars with Lagoon ink
12. Stamp paint splatters with Black ink
13. Embellish with sparkles
14. Add journaling



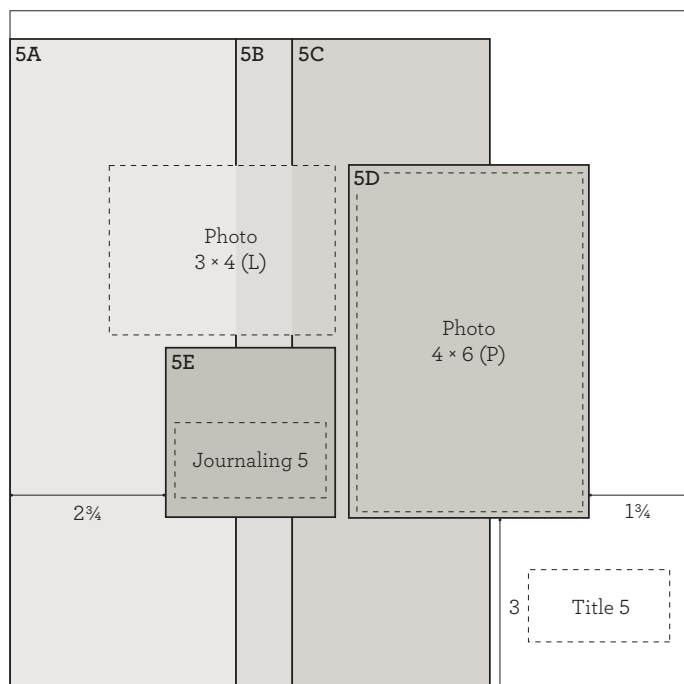
Paper: White Daisy
 Die: school kid of your choice
 Ink: Black
 Tip: Add color with watercolor paints and waterbrush once ink is dry.



Assemble:

1. Use True Fit Folio as base page (back of Page 3)
2. Attach 4A
3. Dovetail 4B and 4C, and attach
4. Attach 4F, 4G, and 4H
Tip: Tuck 4G and 4H slightly behind 4F, as shown.
5. Dovetail 4D and 4E, and attach
6. Stamp title with Black ink
7. Stamp heart with Black ink
8. Stamp schoolhouse with Black ink

9. Stamp paint swash with Lagoon ink
10. Stamp paint splatters with Lagoon ink
11. Add photos
Tip: Tuck 3 x 4 photos slightly behind 4F, as shown.
12. Attach school kid with thin 3-D foam tape
13. Embellish with sparkles
14. Add journaling

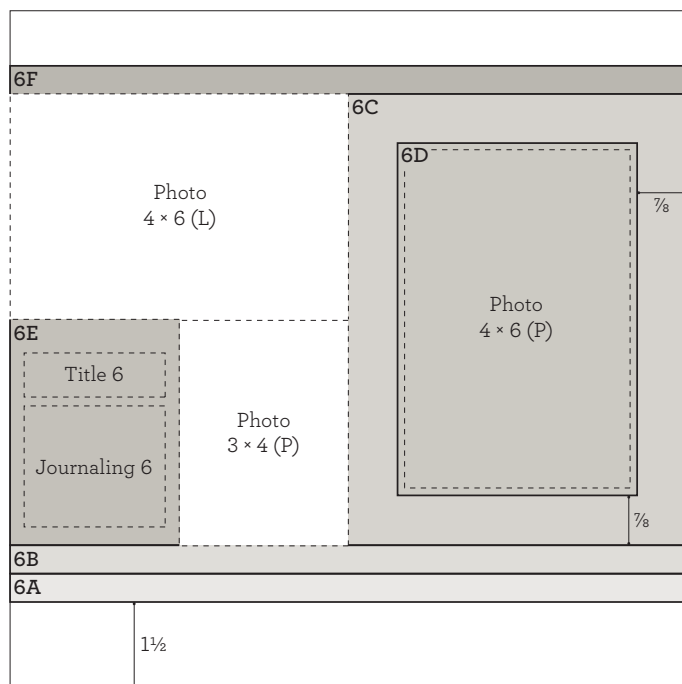


5E:
Paper: light Lagoon
Ink: Lagoon



Assemble:

1. Use front of True Fit Folio as base page
2. Attach 5A, 5B, and 5C
3. Attach 5D and 5E
4. Attach 4 x 6 photo
5. Attach 3 x 4 horizontal Flip Flap
6. Insert two 3 x 4 photos in Flip Flap
7. Attach 3 x 4 photo above 5E, under Flip Flap
8. Stamp title with Black ink
9. Stamp apple with Black ink
Tip: Add color with watercolor paints and waterbrush once ink is dry.
10. Embellish with sparkles
11. Add journaling



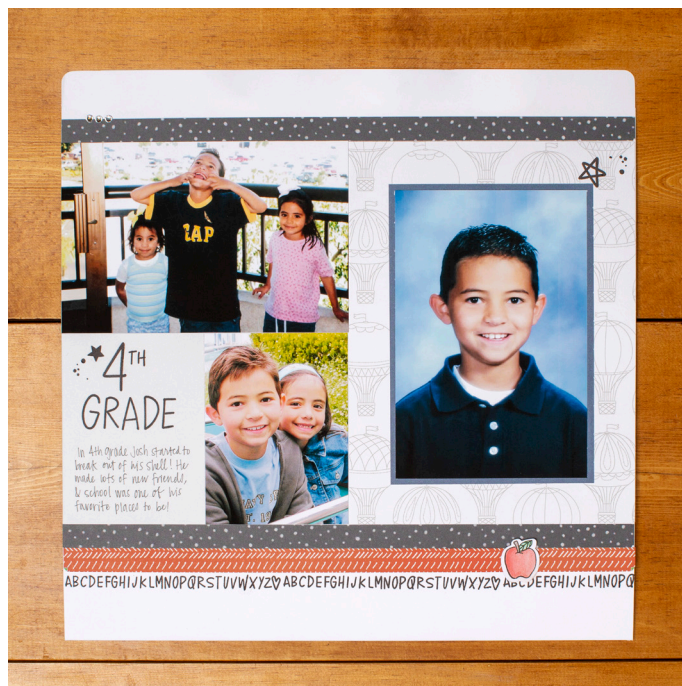
Paper: White Daisy
Die: apple
Ink: Black
Tip: Add color with watercolor paints and waterbrush once ink is dry.



6C:
Paper: hot air balloons
Ink: Black

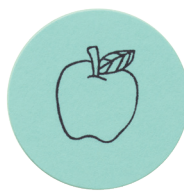
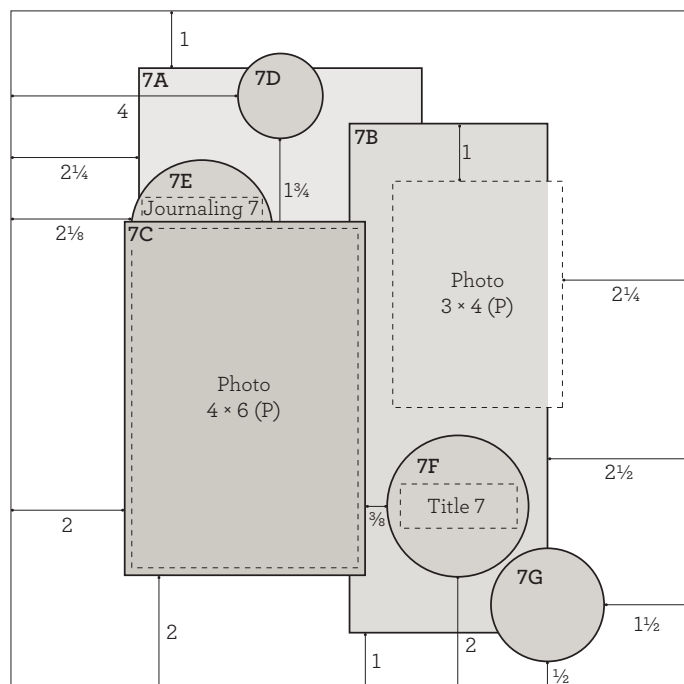


6E:
Paper: light Linen
Ink: Black



Assemble:

1. Use True Fit Folio as base page (back of Page 5)
2. Attach 6A, 6B, and 6C
3. Attach 6D and 6E
4. Attach photos
5. Attach 6F
6. Stamp alphabet border with Black ink
7. Attach apple with thin 3-D foam tape
8. Embellish with sparkles
9. Add journaling



7D:
Paper: light Glacier
Die: 1½" circle
Ink: Black

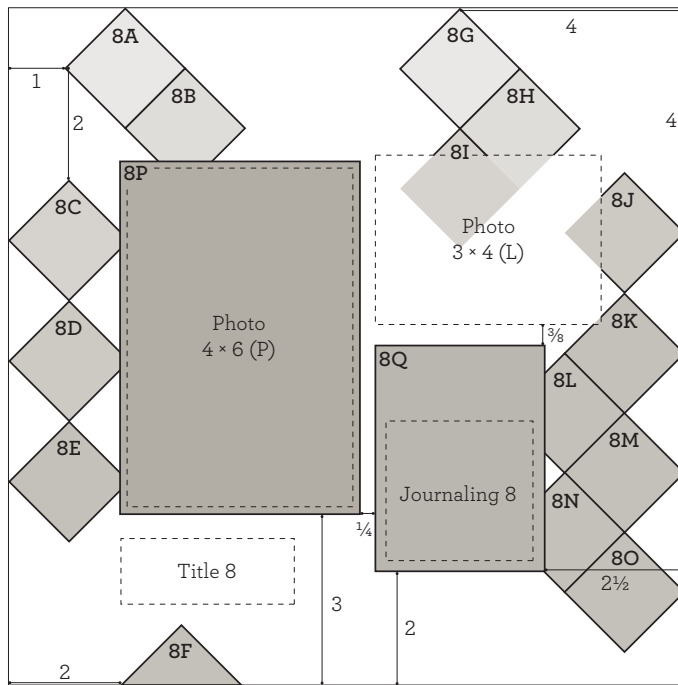


7F:
Paper: light Glacier
Die: 2½" circle
Ink: Black



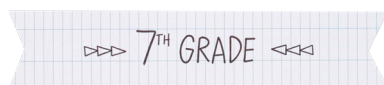
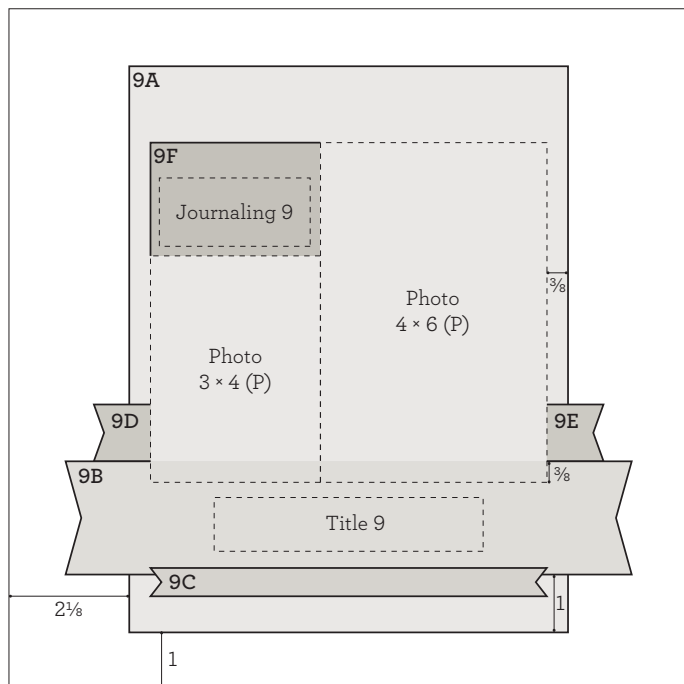
Assemble:

1. Use front of True Fit Folio as base page
2. Attach 7A and 7B
Tip: Overlap as shown, 1¼".
3. Attach 7C
Tip: Do not use adhesive along the top of 7C so another piece can be tucked behind it in a later step.
4. Attach 7D, 7E, 7F, and 7G
Tip: Tuck the bottom of 7E behind 7C.
5. Attach 3 × 4 horizontal Flip Flap
6. Insert two 3 × 4 photos in Flip Flap
7. Attach remaining photos
8. Stamp triangle border with Black ink
9. Stamp globe with Black ink
10. Stamp paint splatters with Lagoon ink
11. Embellish with sparkles
12. Add journaling



Assemble:

1. Use True Fit Folio as base page (back of Page 7)
2. Attach 8A and 8B
3. Attach 8C
Tip: Use 8B as a guide to keep squares parallel.
4. Attach 8D and 8E
5. Attach 8F
Tip: Trim along bottom.
6. Attach 8G, 8H, and 8I
7. Attach 8J
Tip: Use 8H as a guide to keep squares parallel.
8. Attach 8K, 8L, 8M, 8N, and 8O
9. Attach 8Q and 8P
10. Attach 3 x 4 horizontal Flip Flap
11. Insert two photos in Flip Flap
12. Attach remaining photos
13. Stamp title with Black ink
Tip: Add wash with watercolor paints and waterbrush once ink is dry.
14. Stamp schoolhouse with Black ink
Tip: Add color with watercolor paints and waterbrush once ink is dry.
15. Stamp stars with Black ink
16. Stamp paint splatters with Black ink
17. Embellish with sparkles
18. Add journaling



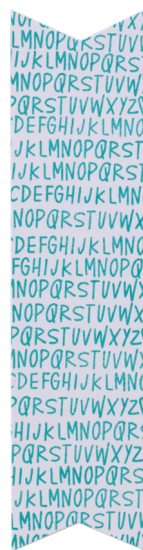
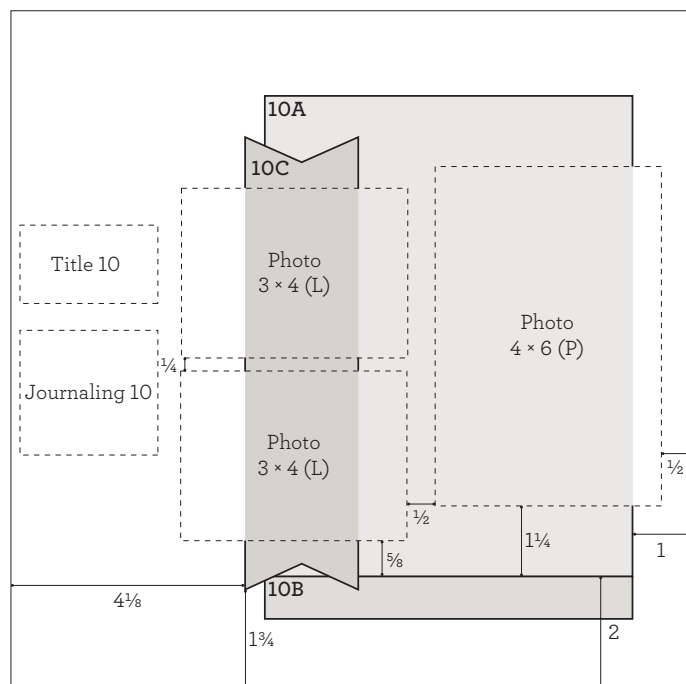
9B:
Paper: ledger
Ink: Black



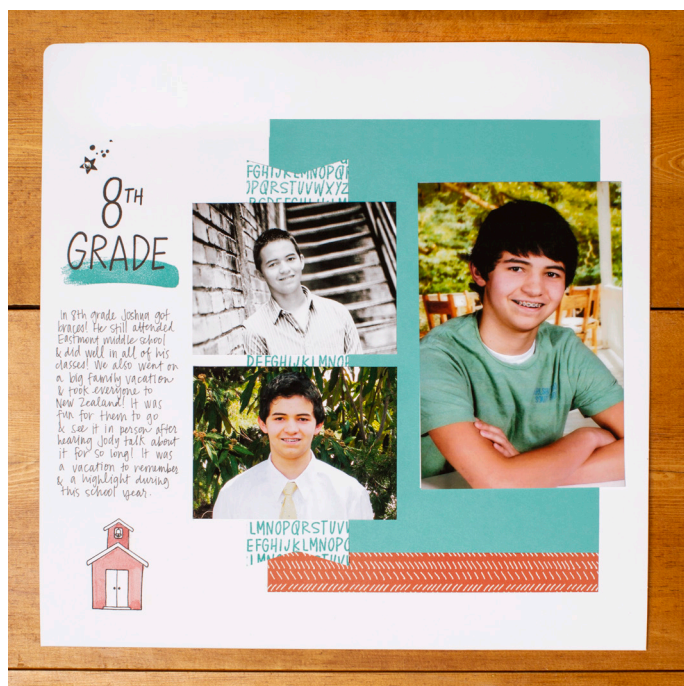
Assemble:

1. Use front of True Fit Folio as base page
 2. Attach 9A
 3. Dovetail and attach 9B
 4. Dovetail and attach 9C
 5. Attach 4 × 6 photo and 9F
 6. Attach 3 × 4 vertical Flip Flap
- Tip: Slightly overlap photo and 9F, as shown.*

7. Insert two 3 × 4 photos in Flip Flap
8. Attach 3 × 4 photo below 9F, under Flip Flap
9. Attach 9D and 9E
10. Embellish with sparkles
11. Add journaling



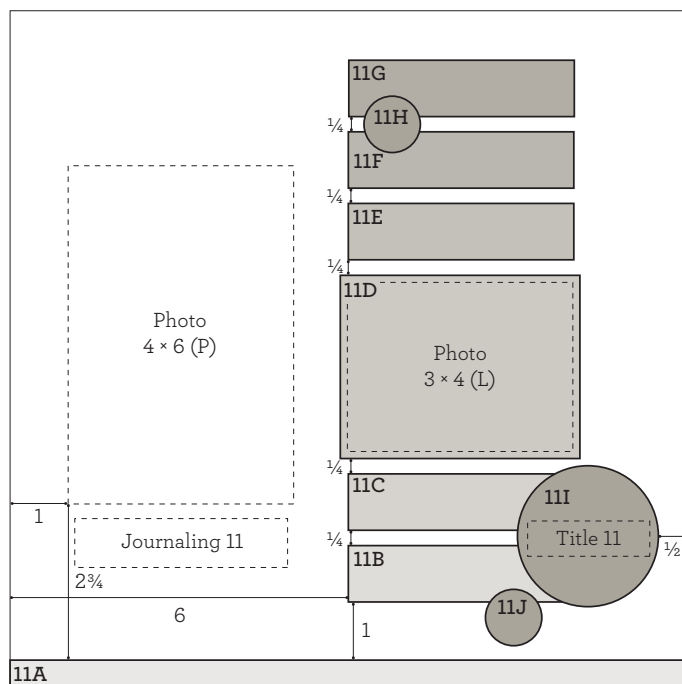
10C:
Paper: White Daisy
Ink: Lagoon



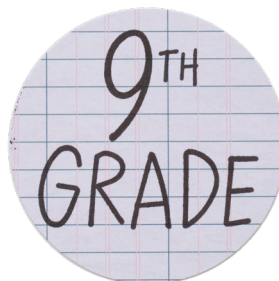
Assemble:

1. Use True Fit Folio as base page (back of Page 9)
2. Attach 10A and 10B
3. Dovetail 10C and attach
4. Attach photos
5. Stamp title with Black ink
6. Stamp schoolhouse with Black ink
7. Stamp paint swash with Lagoon ink
8. Stamp star and paint splatters with Black ink
9. Embellish with sparkles
10. Add journaling

Tip: Add color with watercolor paints and waterbrush once ink is dry.



11H:
Paper: light Linen
Die: 1" circle
Ink: Black



11I:
Paper: ledger
Die: 2 1/2" circle
Ink: Black

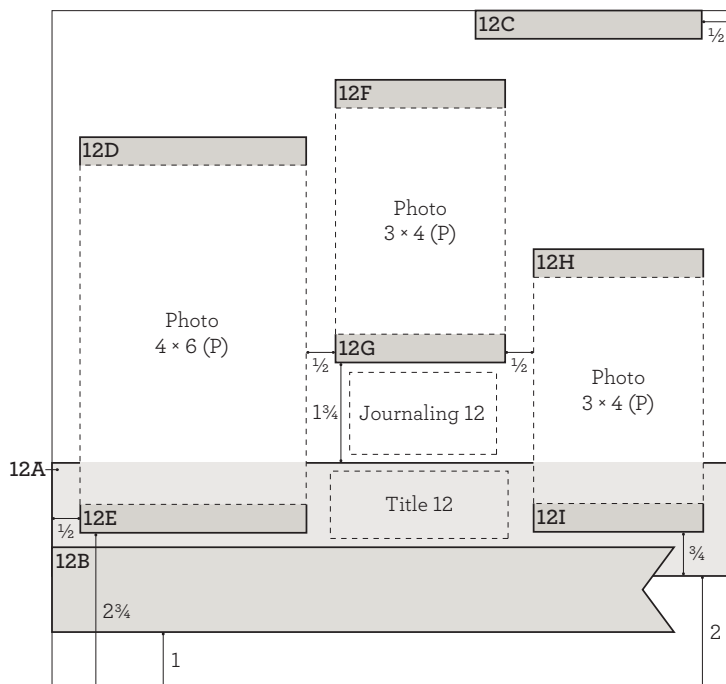


11J:
Paper: light Linen
Die: 1" circle
Ink: Black



Assemble:

1. Use front of True Fit Folio as base page
2. Attach 11A, 11B, 11C, 11D, 11E, 11F, and 11G
3. Attach 3 x 4 horizontal Flip Flap over 11D
4. Insert two photos in Flip Flap
5. Attach remaining photos
6. Attach 11H, 11I, and 11J
7. Stamp star with Lagoon ink
8. Stamp banner with Lagoon ink
9. Stamp paint splatters with Black ink
10. Embellish with sparkles
11. Add journaling

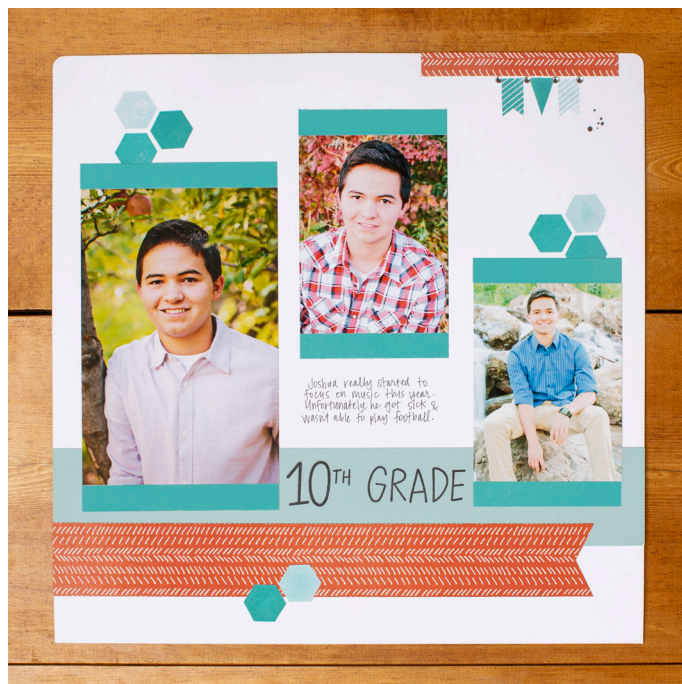


Paper: White Daisy

Ink: Lagoon

Tip: Use first- and second-generation stamping. Hand trim.

Technique: Ink stamp in Lagoon, stamp it on White Daisy cardstock to create first image, then without re-inking stamp again on cardstock to create a second lighter, image.



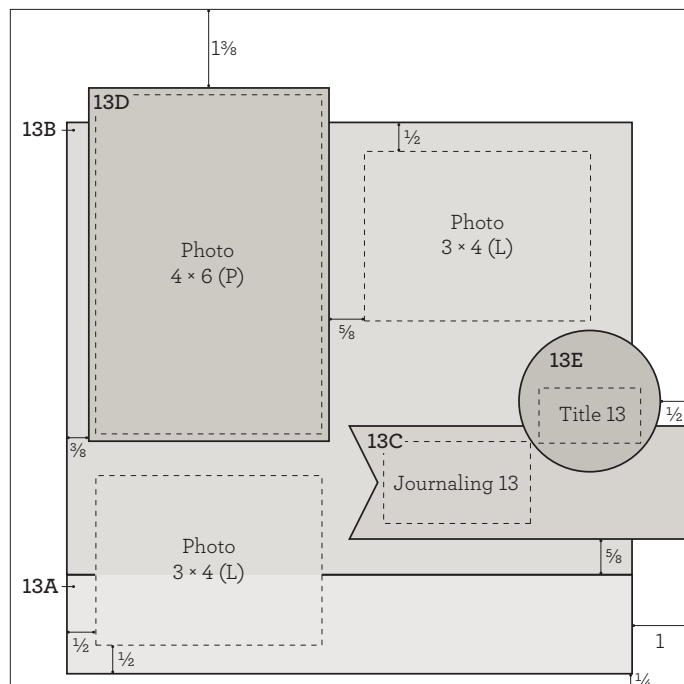
Assemble:

1. Use True Fit Folio as base page (back of Page 11)
2. Attach 12A
3. Dovetail 12B and attach
4. Attach 12C and prepared pieces
5. Stamp hexagons with Lagoon ink
Tip: Use first- and second-generation stamping.
Technique: Ink stamp in Lagoon, stamp on base page to create first image, then without re-inking, stamp again on base page to create a second, lighter, image.
6. Stamp banners with Lagoon ink

Tip: Use first- and second-generation stamping to create a lighter banner image.

Technique: Ink stamp in Lagoon, stamp it on a scratch piece of paper, then without re-inking stamp on page.

7. Stamp paint splatter with Black ink
8. Attach photos
9. Attach 12D, 12E, 12F, 12G, 12H, and 12I
10. Stamp title with Black ink
11. Embellish with sparkles
12. Add journaling



Paper: White Daisy
Die: apple
Ink: Black
Tip: Add color with watercolor paints and waterbrush once ink is dry.

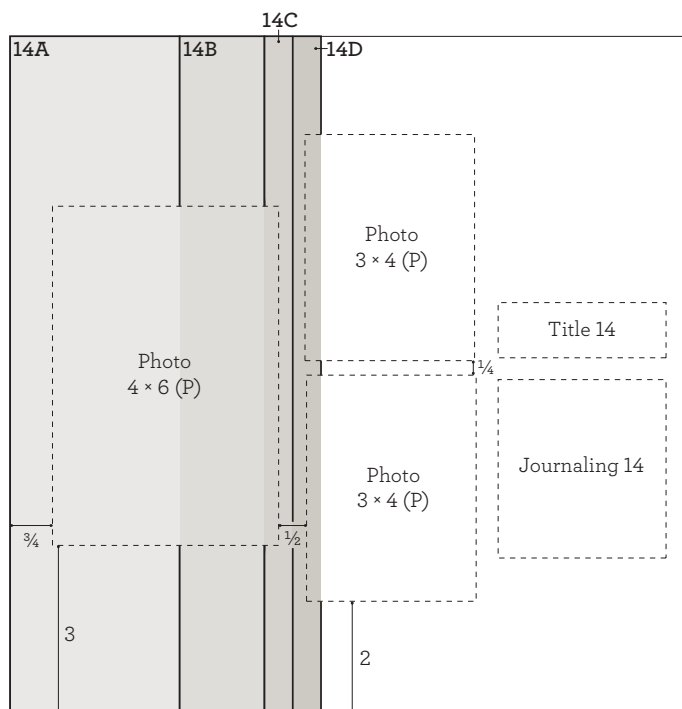


13E:
Paper: hot air balloons
Die: 2 1/2" circle
Ink: Black



Assemble:

1. Use front of True Fit Folio as base page
2. Attach 13A and 13B
3. Stamp alphabet border with Black ink
4. Dovetail 13C and attach
5. Attach 13D and 13E
6. Attach photos
7. Stamp star and paint splatters with Black ink
8. Attach apple
9. Embellish with sparkles
10. Add journaling



Assemble:

1. Use True Fit Folio as base page (back of Page 13)
2. Attach 14A, 14B, 14C, and 14D
3. Stamp vertical triangle border with Black Ink
4. Attach photos
5. Stamp title with Black ink
6. Stamp heart by title, globe, and paint splatter by globe with Black ink
7. Stamp paint splatter by title with Lagoon ink
8. Stamp horizontal triangle border and paint swash with Lagoon ink
9. Embellish with sparkles
10. Add journaling