

Here's to You

| 1 single page & 7 cards



Additional Materials Needed:

Z2841 Glacier Exclusive Inks™ Stamp Pad
 Z2895 Lagoon Exclusive Inks™ Stamp Pad
 Z2892 Pacifica Exclusive Inks™ Stamp Pad
 Y1006 3" x 3" My Acrylix® Block
 Y1009 2" x 3½" My Acrylix® Block
 Y1012 4" x 5" My Acrylix® Block
 Z3372 Adhesive Runner
 Z2089 Micro Dots Glue Dots®
 Z2060 Thin 3-D Foam Tape
 Z3167 Cricut® Artistry Collection
 Cricut® Machine
 Embossing Machine

This workshop uses the Cricut® Artistry Collection, which features designs in a wide variety of themes that can be used for any and every occasion. The necessary Cricut® shapes to complete this workshop are available as a project file in Cricut Design Space™, Here's to You Workshop (<https://design.cricut.com/#/design/95920516>).

If you are not using a digital machine, see page 5 for specific Cricut® cut information.

Exclusive Stamps:

sending you
SUNSHINE
 laughter
 & HUGS

here's to
YOU

everyone needs a
friend
 like you

I wish
YOU
 all the
JOY
 that you can
WISH

Getting Started:

- Gather all additional materials needed.
- Light grey pieces on your cutting guide are scrapbooking project pieces. Dark grey pieces on your cutting guide are cardmaking project pieces. White pieces are left over paper.
- As you cut the paper, sort the pieces as indicated in the cutting guide, creating a stack for each project.

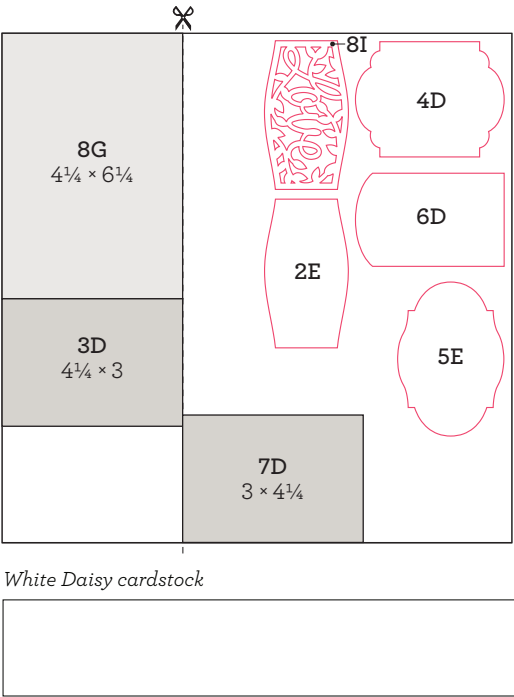
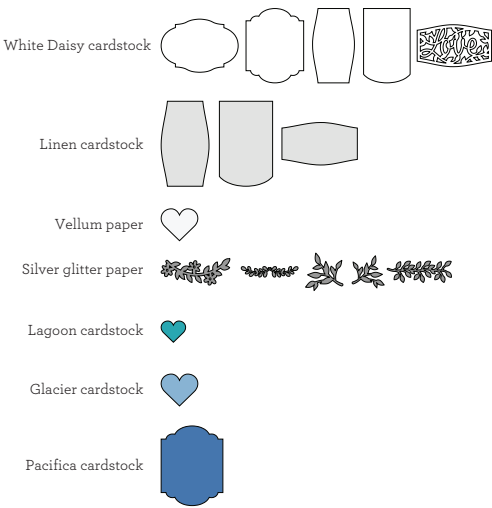
Key:

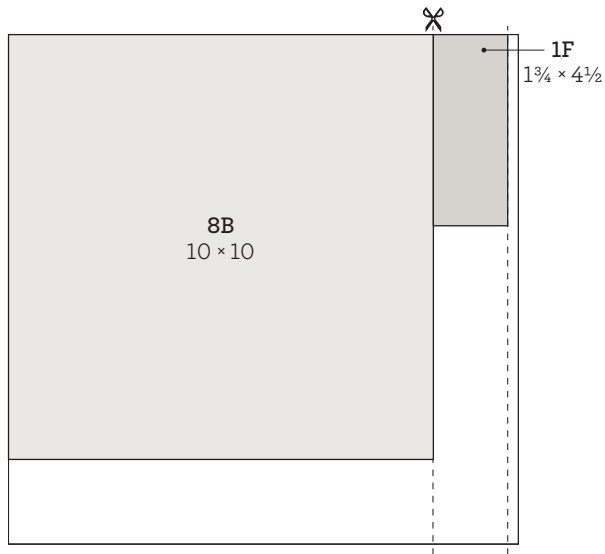
✂ = first cut | * = use back of paper
■ = suggested stamp arrangement | ■ = suggested Thin Cuts arrangement | ■ = suggested Cricut® cut arrangement
(See project instructions for ink color and other details)

Cutting Diagrams:

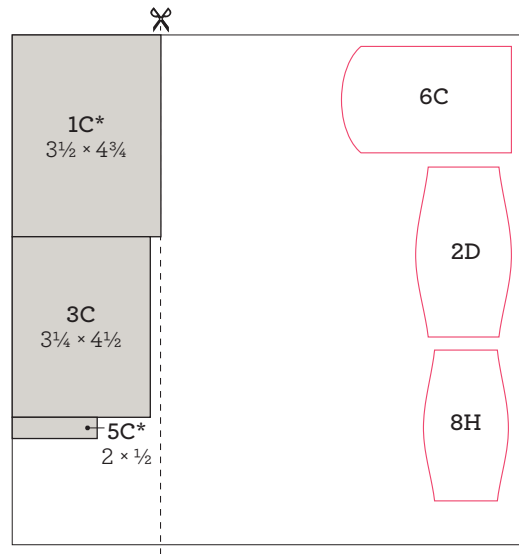
Important instructions for Cricut® cuts: Where there are Cricut® shapes in the cutting diagram, start by cutting all straight pattern pieces first (except on the first sheet of White Daisy cardstock, the Linen cardstock, and the silver glitter paper). Use the remaining paper to cut pattern pieces requiring a Cricut® shape. On the first sheet of White Daisy cardstock, the Linen cardstock, and the silver glitter paper, cut the Cricut® shapes first and then make the straight cuts.

Cricut Design Space™ color key





White Daisy cardstock

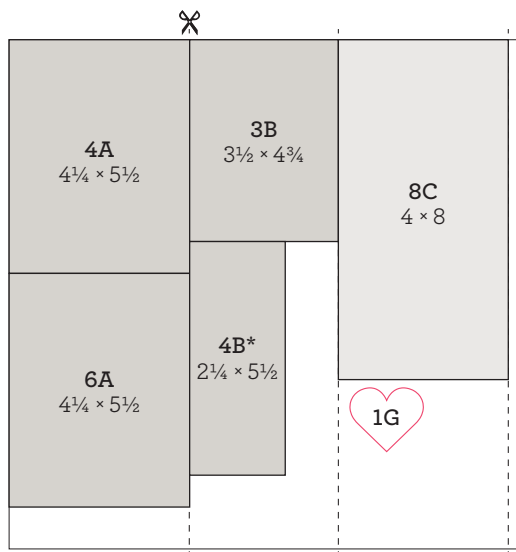


Linen cardstock



dark

*light

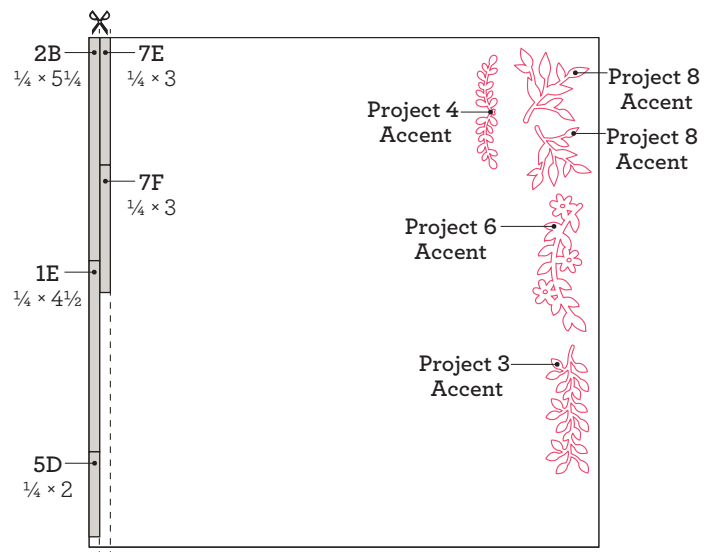


Glacier cardstock

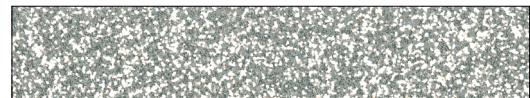


light

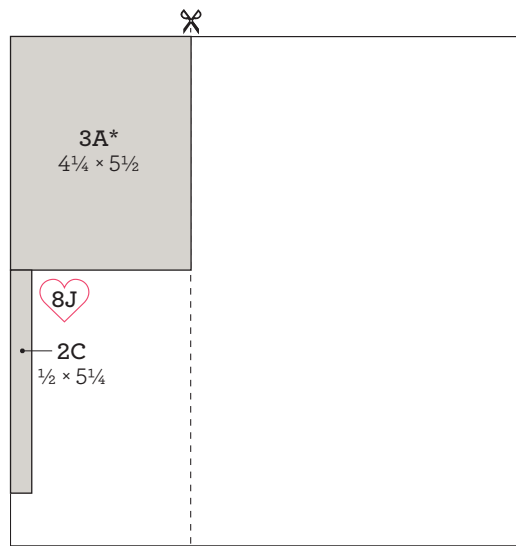
*dark



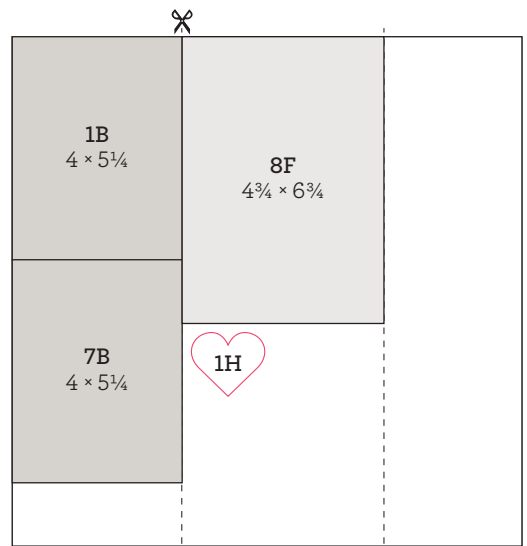
Silver glitter paper



Tip: Set your Cricut® dial to "custom" and digitally select "glitter cardstock" for the best cutting results on this paper.



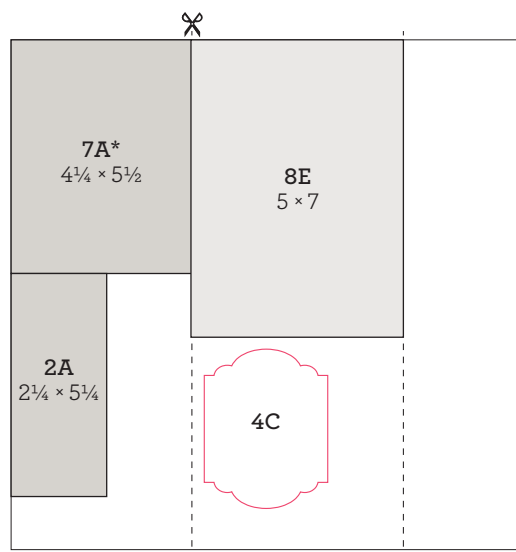
Lagoon cardstock



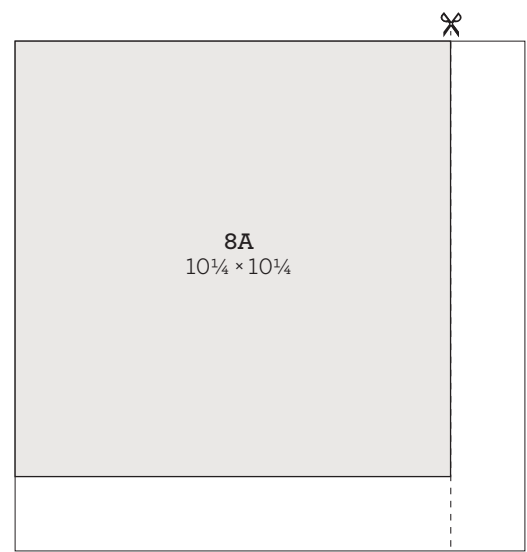
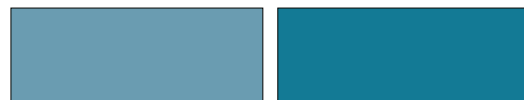
vellum



Tip: Set your Cricut® dial to “custom” and digitally select “vellum” for the best cutting results on this paper.

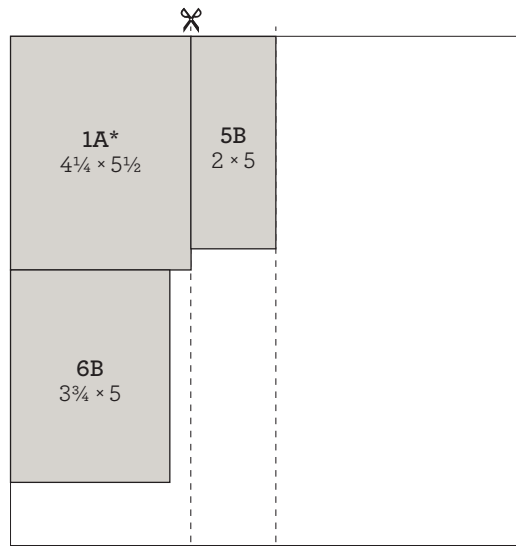


Pacifica cardstock

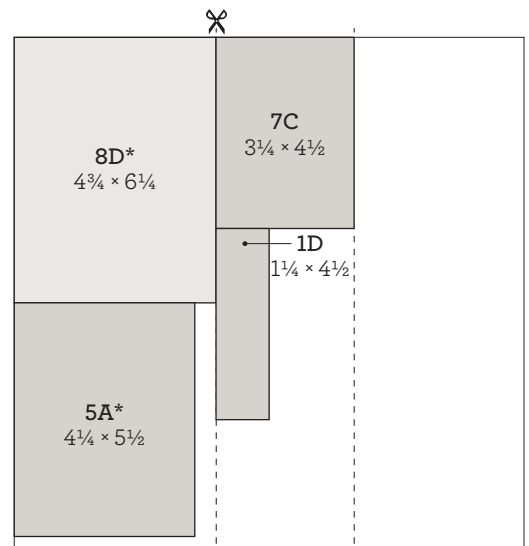
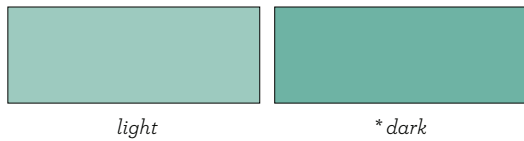


Juniper cardstock

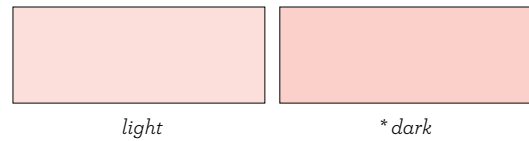




Juniper cardstock



Bashful cardstock



Cricut® Shapes:

Artistry Collection

White Daisy cardstock

2E: 3 1/2" Shape <q> (p. 11)

Tip: Rotate 90 degrees, then size.

4D: 3 1/2" Shape <Christms> (p. 48)

5E: 2 1/2" Banner <Spring> (p. 38)

6D: 3 1/2" Shape <k> (p. 28)

8I: 2" Shift + Shape <Q> (p. 11)

Linen cardstock

2D: 4" Shape <q> (p. 11)

Tip: Rotate 90 degrees, then size.

6C: 4" Shape <k> (p. 28)

8H: 2" Shape <q> (p. 11)

Glacier cardstock

1G: 1 1/2" Icon-1 <k> (p. 28)

When using a Cricut® machine older than the Cricut Explore Air™, size the following pieces as noted below.

2D: 2 1/4" Shape <q> (p.11)

2E: 2" Shape <q> (p.11)

Silver glitter paper

Project 3 Accent: 1" Shift + Background <J> (p. 27)

Project 4 Accent: 1/2" Shift + Background <Mother> (p. 39)

Project 6 Accent: 1 1/4" Shift + Background <A> (p. 21)

Project 8 Accent: 1 1/2" Icon-1 <z> (p. 31)

Tip: Flip horizontally.

Project 8 Accent: 1 3/4" Icon-1 <z> (p. 31)

Lagoon cardstock

8J: 1" Icon-1 <k> (p. 28)

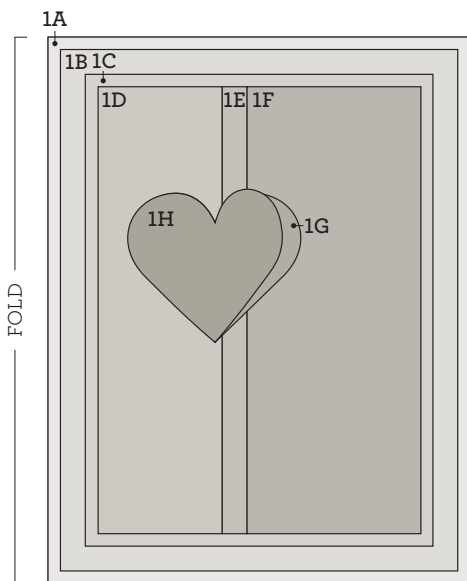
Vellum

1H: 1 1/2" Icon-1 <k> (p. 28)

Pacifica cardstock

4C: 3 3/4" Shape <Christms> (p. 48)

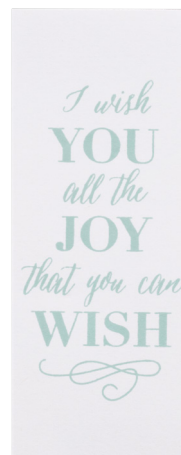
Project 1:



Prepare:



1D:
Paper: Bashful
Embossing folder: rose



1F:
Paper: White Daisy
Ink: Glacier



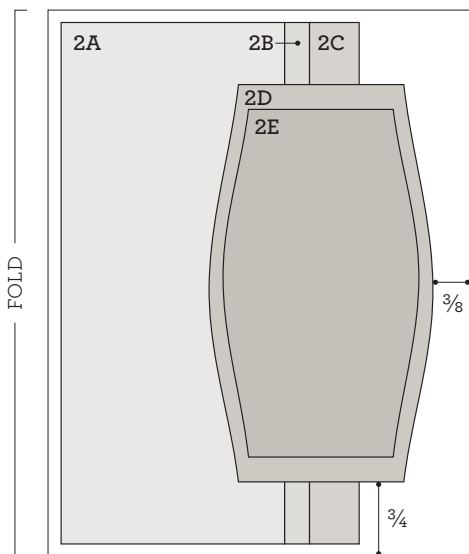
Assemble:

1. Prepare pieces shown above
2. Attach 1A to card base
3. Attach 1B

Tip: Place adhesive in the center of the vellum so it won't show around the edges.
4. Attach 1D, 1E, and 1F to 1C
5. Attach 1C to 1B with thin 3-D foam tape
6. Attach 1H to 1G with a glue dot

Tip: Place glue dots down the center of the vellum heart, then bend up edges to add dimension.
7. Attach 1G with thin 3-D foam tape
8. Embellish with pearls

Project 2:



Prepare:



2A:
Paper: light Pacifica
Embossing folder: rose



2E:
Paper: White Daisy
Ink: Lagoon

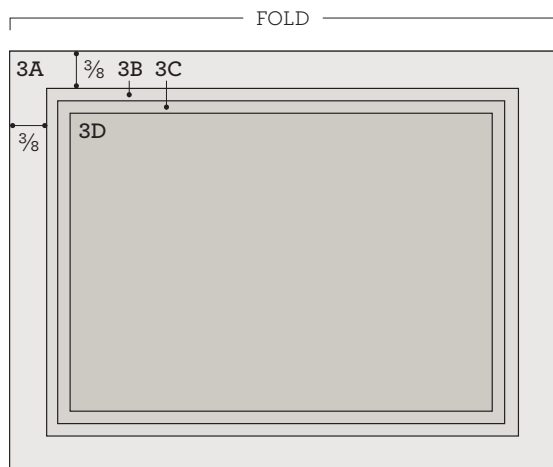
Assemble:

1. Prepare pieces shown above
2. Attach 2A, 2B, and 2C to card base
3. Attach 2E to 2D
4. Attach 2D with thin 3-D foam tape
5. Embellish with pearls



Project 3:

Prepare:



3A:
Paper: light Lagoon
Embossing folder: rose



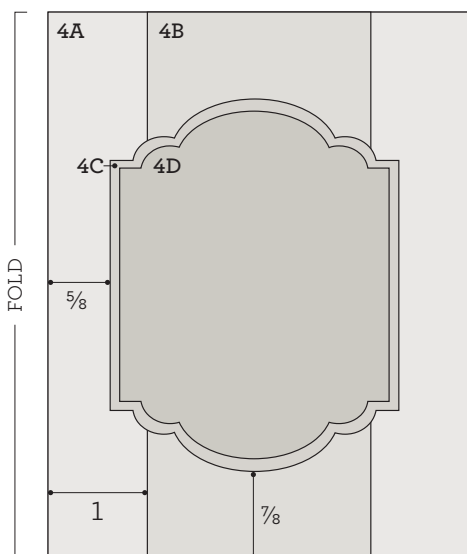
3D:
Paper: White Daisy
Ink: Pacifica
Tip: Stamp sentiment off-center, to the right.

Assemble:

1. Prepare pieces shown above
2. Attach 3A to card base
3. Attach 3D to 3C
4. Attach 3C to 3B
5. Attach 3B to 3A with thin 3-D foam tape
6. Attach accent
7. Embellish with pearls



Project 4:



Prepare:



4B:
Paper: Glacier
Embossing folder: rose



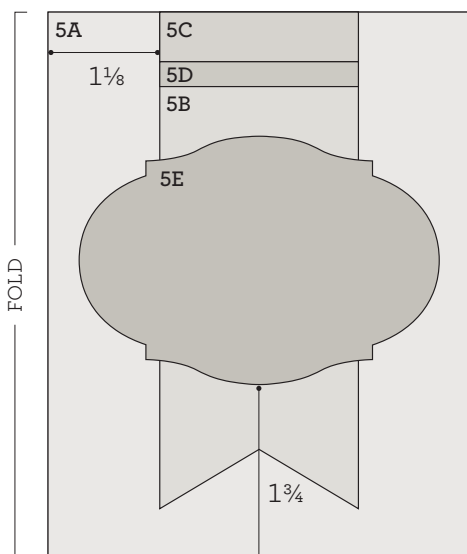
4D:
Paper: White Daisy
Ink: Pacifica



Assemble:

1. Prepare pieces shown above
2. Attach 4A to card base
3. Attach 4B
4. Attach 4D to 4C
5. Attach 4C with thin 3-D foam tape
6. Attach accent
7. Embellish with pearls

Project 5:



Prepare:



5A:
Paper: Bashful
Embossing folder: rose



5E:
Paper: White Daisy
Ink: Pacifica

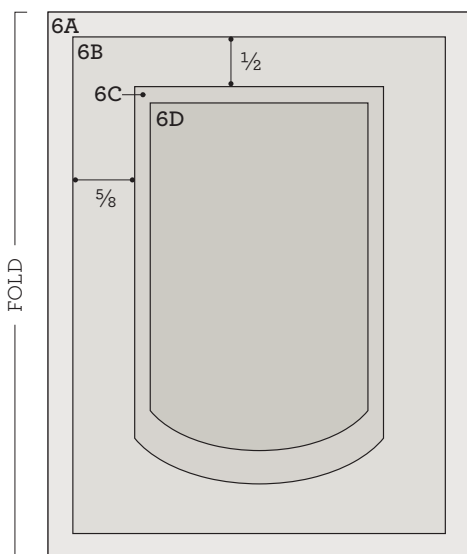
Assemble:

1. Prepare pieces shown above
2. Attach 5A to card base
3. Dovetail 5B and attach
4. Attach 5C
5. Attach 5D
6. Attach 5E with thin 3-D foam tape
7. Embellish with pearls



Project 6:

Prepare:



6B:
Paper: light Juniper
Embossing folder: rose



6D:
Paper: White Daisy
Ink: Lagoon

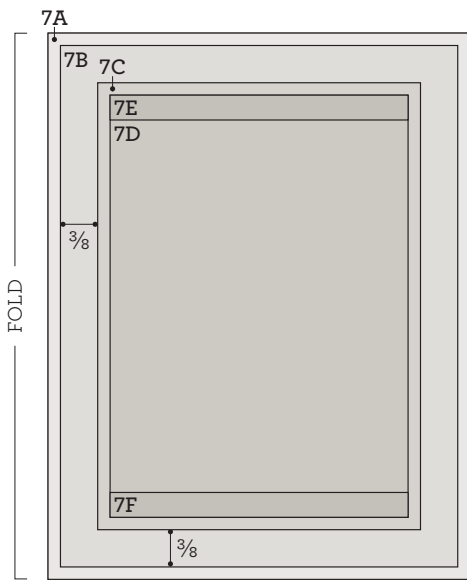
Assemble:

1. Prepare pieces shown above
2. Attach 6A to card base
3. Attach 6B
4. Attach 6D to 6C
5. Attach 6C with thin 3-D foam tape
6. Attach accent
7. Embellish with pearls



Project 7:

Prepare:



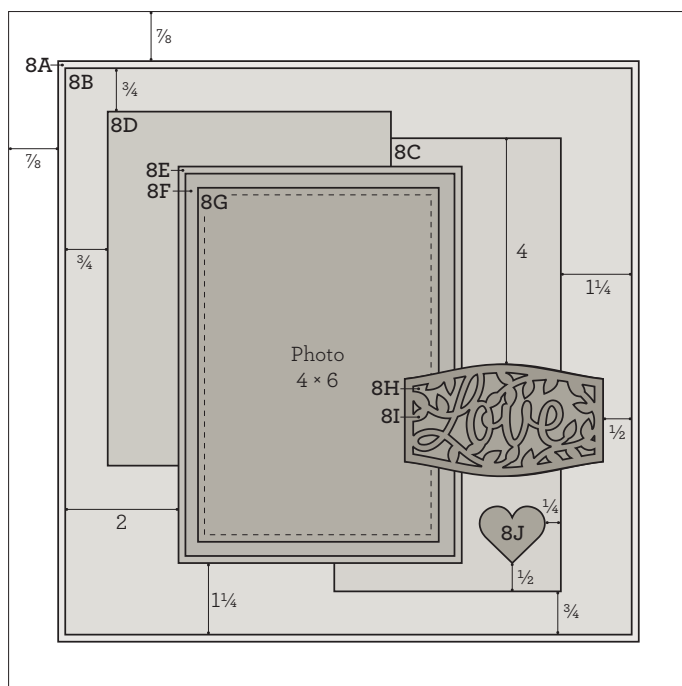
7D:
Paper: White Daisy
Ink: Pacifica



Assemble:

1. Prepare piece shown above
2. Attach 7A to card base
3. Attach 7B
Tip: Place adhesive in the center of the vellum so it won't show around the edges.
4. Attach 7D to 7C
5. Attach 7E and 7F to 7D
6. Attach 7C with thin 3-D foam tape
7. Embellish with pearls

Project 8



Prepare:



8C:
Paper: light Glacier
Ink: Glacier
Tip: Stamp image 1 1/4" from top



8D:
Paper: Bashful
Embossing folder: rose

Assemble:

1. Use Linen cardstock as base page
2. Attach 8A to base
3. Attach 8B
4. Attach 8C
5. Attach 8D
6. Attach 8E
7. Attach 8F
8. Attach photo to 8G
9. Attach 8G with thin 3-D foam tape
10. Attach 8I to 8H
11. Attach 8H with thin 3-D foam tape
Tip: Do not use foam tape where it overlaps mounted photo.
12. Attach 8J
13. Attach accents
14. Embellish with pearls