

# Heart Happy

| 1 layout, 2 single pages, 10 cards, 5 tags



## Additional Materials Needed:

- CC2191My Acrylix® A Piece of My Heart Stamp Set\*
- Z6509 Candy Apple Exclusive Inks™ Stamp Pad
- Z6501 Ballerina Exclusive Inks™ Stamp Pad
- Z2812 Raspberry Exclusive Inks™ Stamp Pad
- Z2848 Sapphire Exclusive Inks™ Stamp Pad
- Z2060 Thin 3-D Foam Tape
- Z3326 Tombow® Permanent Adhesive
- Z697 Round Sponge
- Hole punch

\*unless you purchased bundle CC2196

## Exclusive Stamp Set:



**Gather photos (12 total)**

				(P) = portrait	(L) = landscape
	2 × 2	3 × 4 (P)	3 × 4 (L)	4 × 6 (L)	5 × 7 (P)
Project 1	-	1	-	1	1
Project 2	6	-	-	-	-
Project 3	-	-	2	1	-

**Getting Started:**

- Gather any additional materials needed.
- Trim all zip strips and set aside. The zip strip is the ½" accent paper along the top of each sheet.
- Check the cut orientation below each cutting guide image. This will show you how to cut the paper, keeping the patterns on your project pieces facing the right direction.
- Light grey pieces on your cutting guide are project pieces. White pieces are leftover paper.
- As you cut the paper, sort the pieces as indicated in the cutting guide, creating a stack for each project.

**Key:**

✂ = first cut | \* = use back of paper | P = project

■ = suggested stamp arrangement

(See project instructions for ink color and other details)

**Cutting Diagrams:**

*zip strips*



1B: 12 × ½



1F: 12 × ½



3B: 12 × ½



P1 Accent: 4 × ½



2D: 12 × ½



14C: 2¼ × ½



6C: 5½ × ½



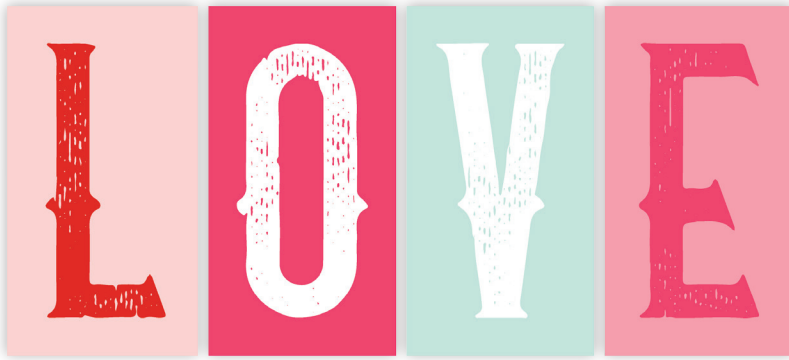
5F: 4 × ½



4G: ¾ × ½



P1 Accent: 2⅜ × ½



P1 Title



P8 Accent



P1 Accents



18B: 2½ × ¾



14B: 2¼ × ¾



P2 Accent



P3 Accent



3D: 3¾ × 3¾



P2 Accent



P3 Accent



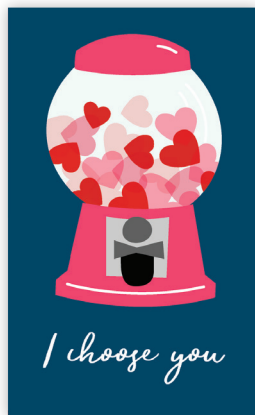
P3 Accent



P2 Accents



10E: 3 × 2¾



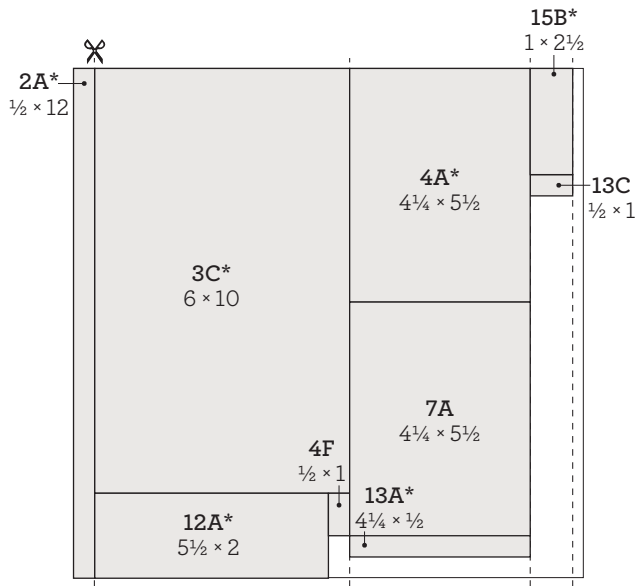
1J: 2¾ × 3¾



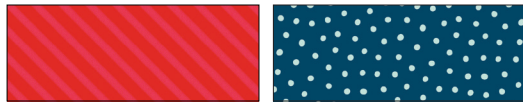
9C: 5¾ × 1¾



P2 Accent

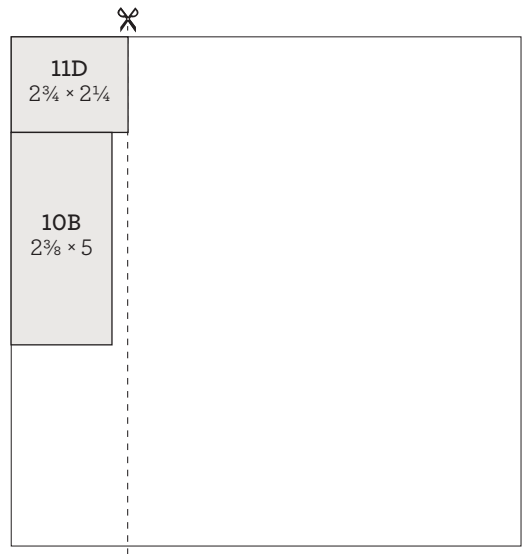


cut orientation

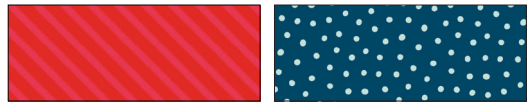


front

\*back

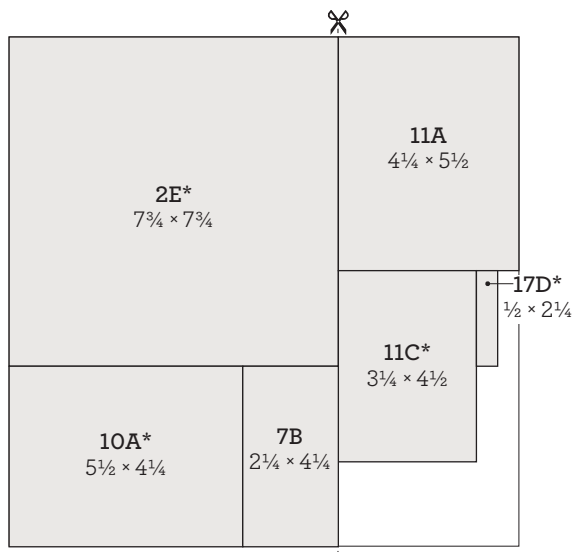


cut orientation



front

\*back

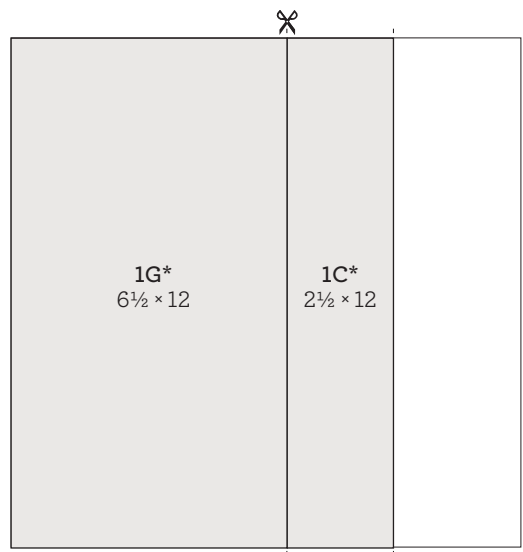


cut orientation



front

\*back

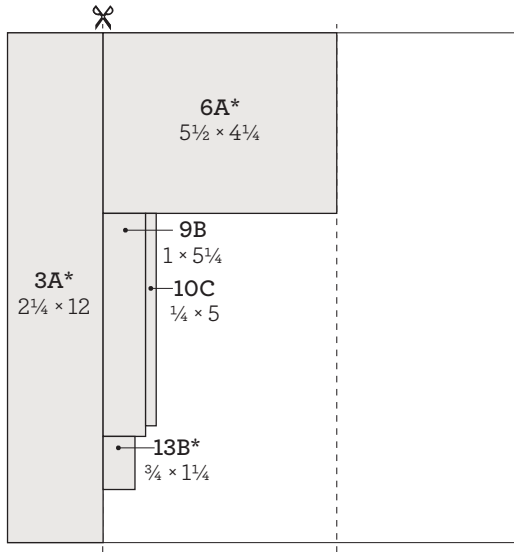


cut orientation

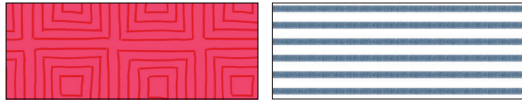


front

\*back

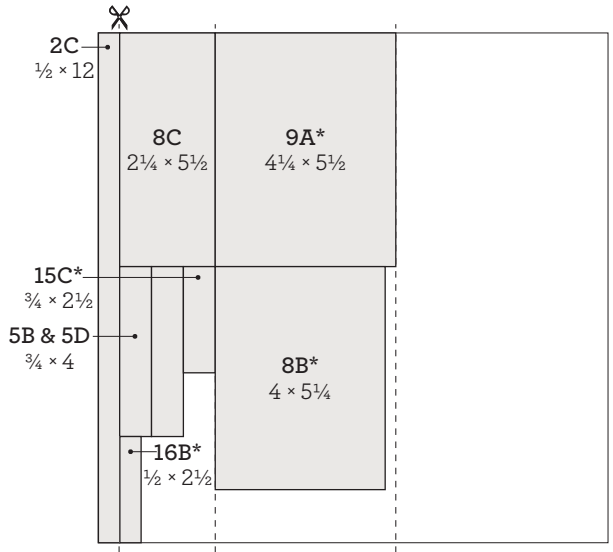


cut orientation

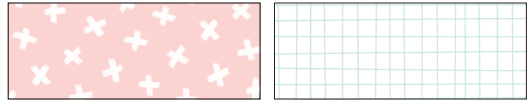


front

\*back

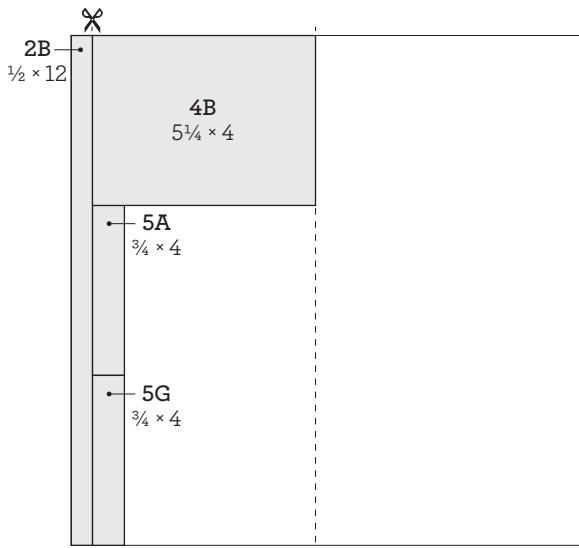


cut orientation



front

\*back

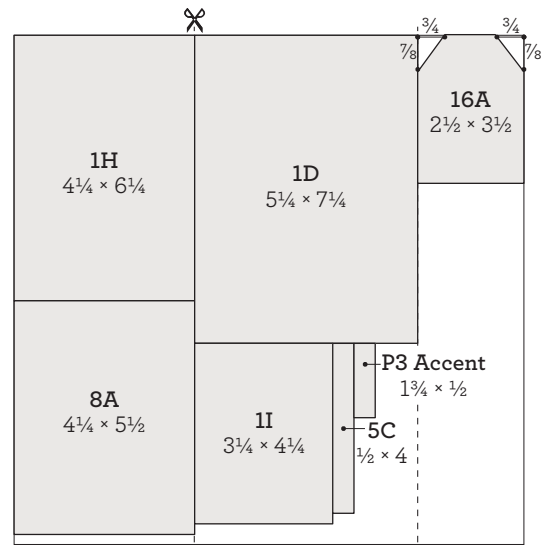


cut orientation



front

\*back

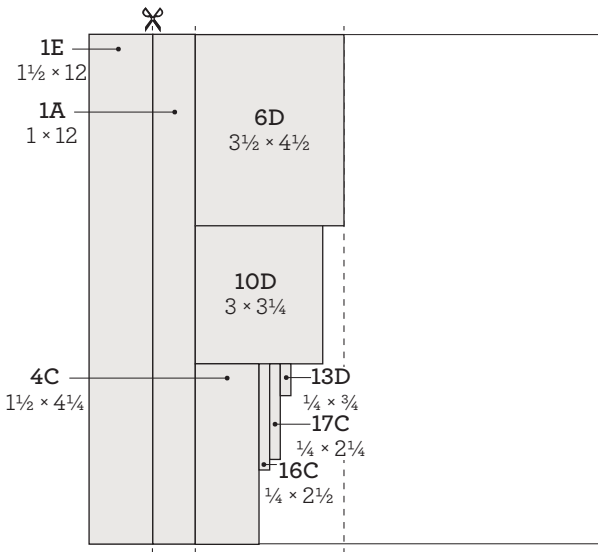


Mint cardstock



light

\*dark

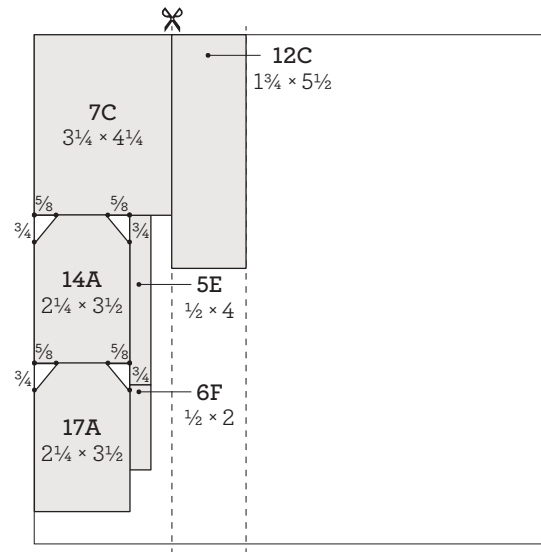


Sapphire cardstock

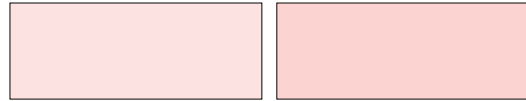


dark

\*light

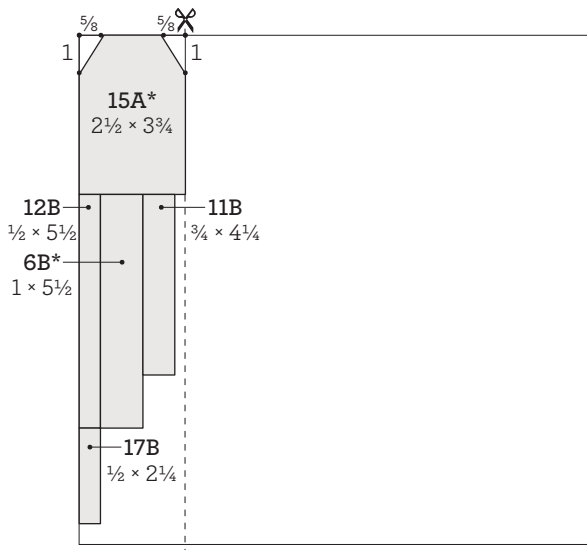


Ballerina cardstock



light

\*dark

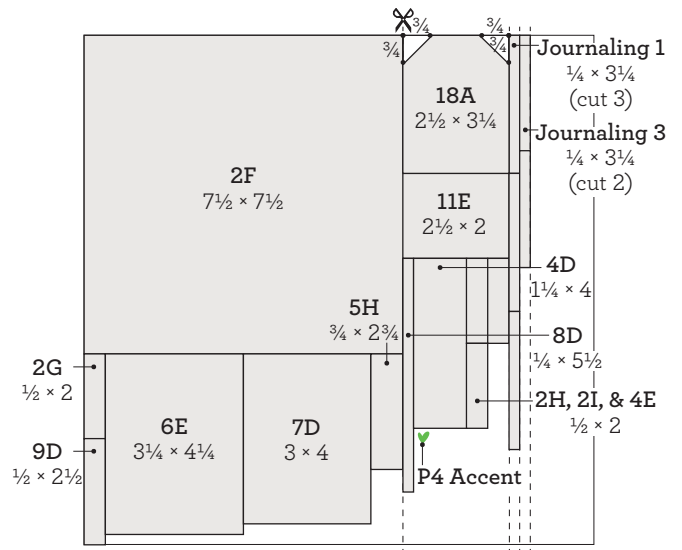


Raspberry cardstock



dark

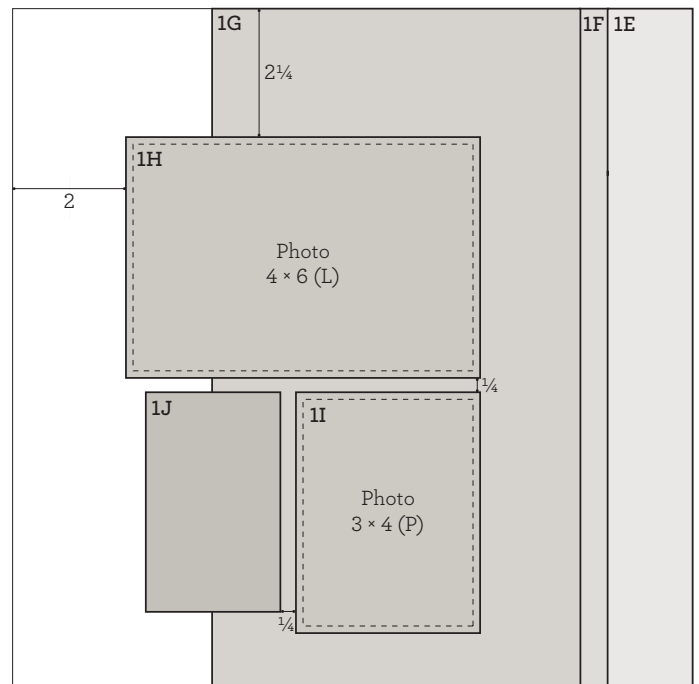
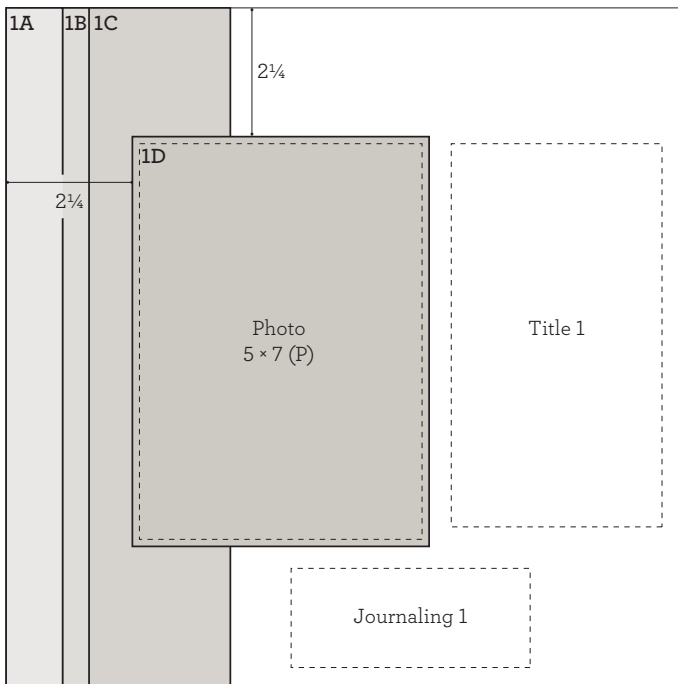
\*light



White Daisy cardstock



# Project 1



## Assemble left page:

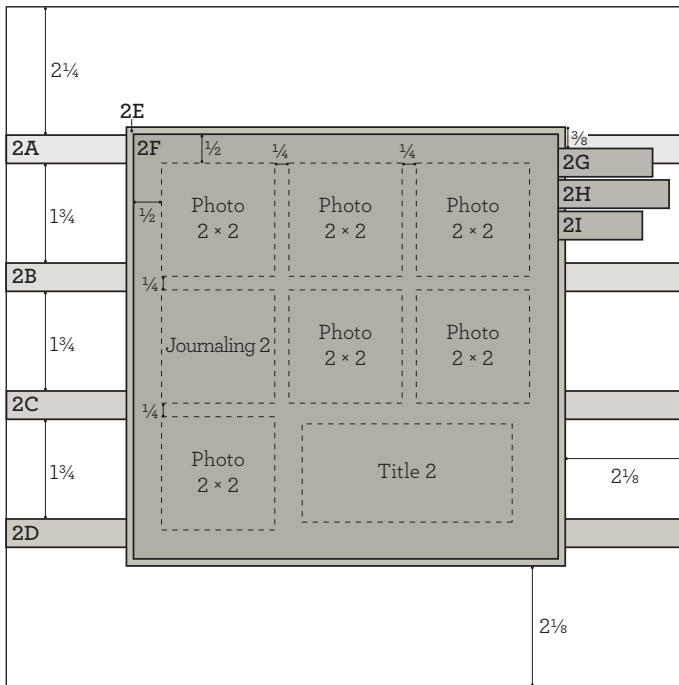
1. Use White Daisy cardstock for base page
2. Attach 1A, 1B, and 1C
3. Embellish with shimmer trim
4. Attach 1D
5. Attach photo
6. Attach title
7. Attach candy accents
8. Embellish with Compliments and gems  
*Tip: Attach a few Compliments with thin 3-D foam tape for added dimension.*
9. Add journaling  
*Tip: Trim strips as needed.*

## Assemble right page:

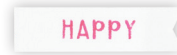
1. Use White Daisy cardstock for base page
2. Attach 1E, 1F, and 1G
3. Embellish with shimmer trim
4. Attach 1H and 1I
5. Attach 1J with thin 3-D foam tape
6. Attach photos
7. Attach zip strip accents  
*Tip: Tear ends of Candy Apple heart zip strip accent before attaching.*
8. Embellish with gems

## Project 2

## Prepare:



**2F:**  
Paper: White Daisy  
Inks: Raspberry, Sapphire



**2G:**  
Paper: White Daisy  
Ink: Raspberry  
Tip: Dovetail right end.



**2H:**  
Paper: White Daisy  
Ink: Sapphire  
Tips: Use second-generation and ombré stamping techniques. Dovetail right end.  
Techniques: Ink stamp with Sapphire and stamp it on a scratch piece of paper. Then, re-ink the bottom with Sapphire. Stamp on 2H.



**2I:**  
Paper: White Daisy  
Inks: Candy Apple, Raspberry  
Tip: Dovetail right end.

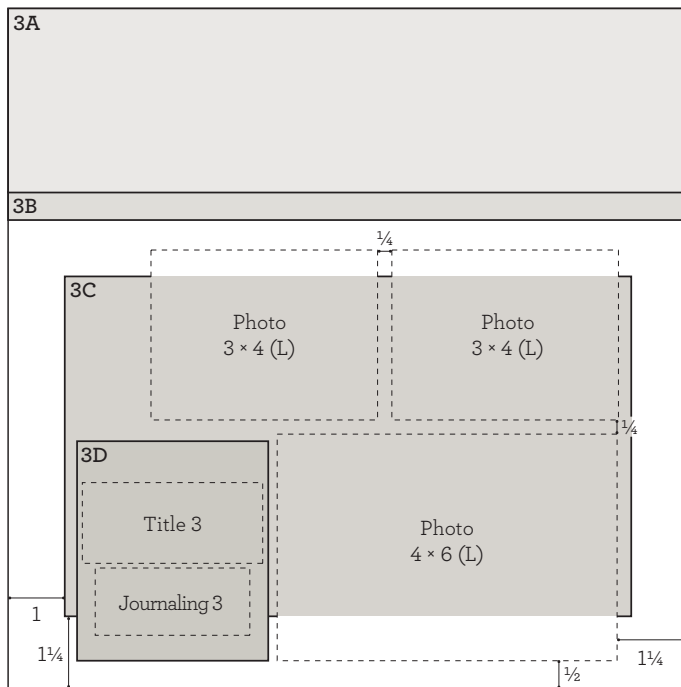


## Assemble:

1. Prepare pieces shown above
2. Use color block stripe paper for base page
3. Attach 2A, 2B, 2C, and 2D
4. Attach 2F to 2E  
*Tip: Do not use adhesive along top right edge of 2F so that other pieces can be tucked behind it in a later step.*
5. Attach 2E
6. Attach 2G, 2H, and 2I  
*Tip: Tuck pieces slightly behind 2F, as shown.*
7. Attach photos
8. Attach heart strip, flower, and "Happy Day" accents
9. Embellish with Complements and gems  
*Tip: Attach a few Complements with thin 3-D foam tape for added dimension.*
10. Add journaling



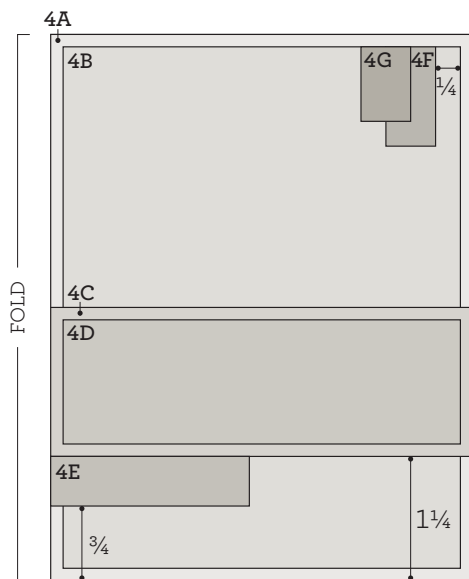
## Project 3



### Assemble:

1. Use White Daisy cardstock for base page
2. Attach 3A and 3B
3. Embellish with shimmer trim
4. Attach 3C
5. Attach photos
6. Attach 3D with thin 3-D foam tape
7. Attach arrow, flower, and Mint cardstock accents  
*Tip: Dovetail both ends of Mint cardstock before attaching.*
8. Embellish with Complements and gems  
*Tip: Attach a few Complements with thin 3-D foam tape for added dimension.*
9. Stamp smallest heart around large flower accent with Raspberry ink, as shown
10. Add journaling  
*Tip: Trim strips as needed.*

## Project 4

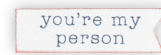


## Prepare:



### 4D:

Paper: White Daisy  
 Inks: Candy Apple, Sapphire  
 Tip: Use selective stamping technique.  
 Technique: Carefully apply ink to the top part of the sentiment only, and stamp on 4D.



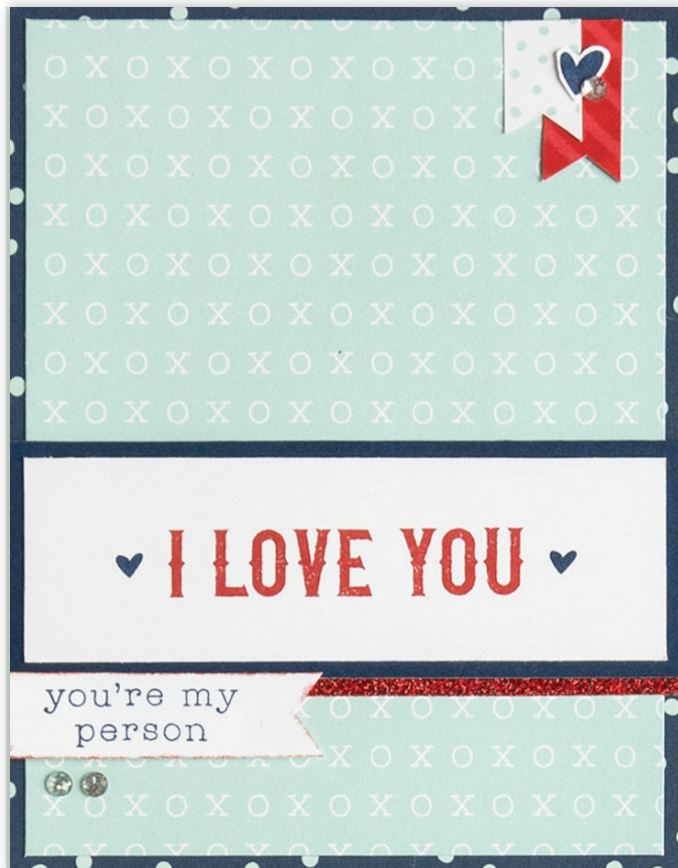
### 4E:

Paper: White Daisy  
 Inks: Candy Apple, Sapphire  
 Tips: Dovetail right end and lightly sponge edges.



### Accent:

Paper: White Daisy  
 Ink: Sapphire  
 Tip: Hand trim.

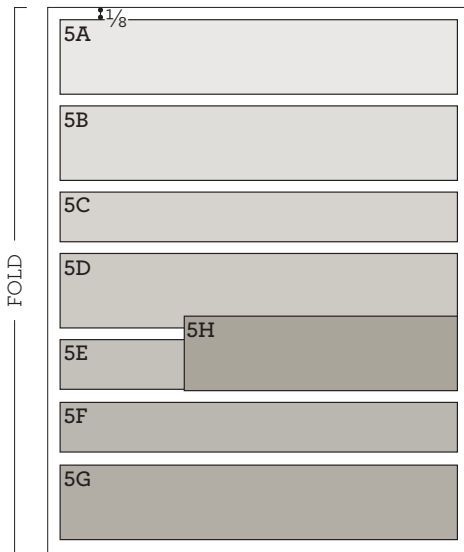


## Assemble:

1. Prepare pieces shown above
2. Attach 4A to card base
3. Attach 4B
4. Attach 4D to 4C
5. Embellish with shimmer trim
6. Attach 4C
7. Attach 4E with thin 3-D foam tape
8. Dovetail 4F and 4G then attach
9. Embellish with heart accent and gems

Project 5

Prepare:



**I LOVE YOU**

**5H:**

Paper: White Daisy

Ink: Sapphire

Tips: Use selective stamping technique.

Dovetail both ends.

Technique: Carefully apply ink to the top part of the sentiment only, and stamp on 5H.

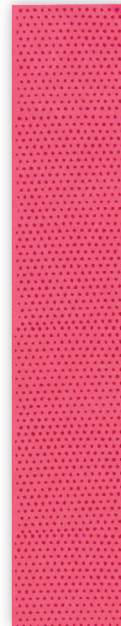
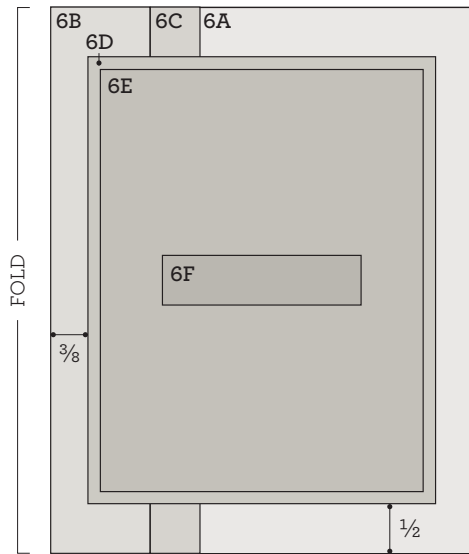


**Assemble:**

1. Prepare piece shown above
2. Attach 5A, 5B, 5C, 5D, 5E, 5F, and 5G to card base
3. Attach 5H with thin 3-D foam tape
4. Embellish with Complements and gems

Project 6

Prepare:



**6B:**  
Paper: light Raspberry  
Ink: Raspberry



**6E:**  
Paper: White Daisy  
Inks: Raspberry, Sapphire  
Tip: Stamp a complete heart by lining up all of the pieces and using the same ink color.



**6F:**  
Paper: light Ballerina  
Ink: Sapphire  
Tip: Dovetail both ends.

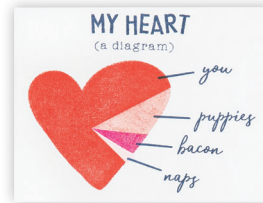
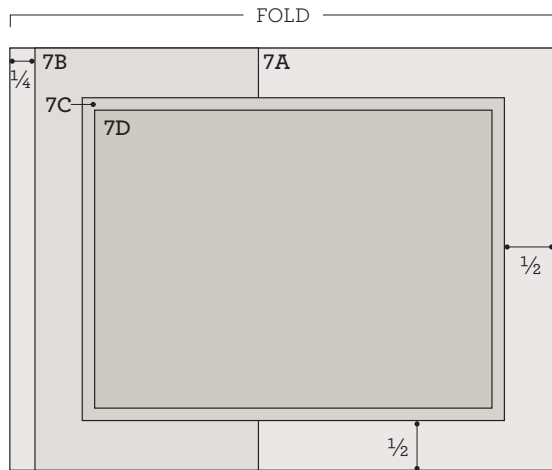


Assemble:

1. Prepare pieces shown above
2. Attach 6A to card base
3. Attach 6B and 6C
4. Attach 6D and 6E
5. Attach 6F with thin 3-D foam tape
6. Embellish with Complements and gems

## Project 7

## Prepare:



### 7D:

Paper: White Daisy

Inks: Ballerina, Candy Apple, Raspberry, Sapphire

Tip: Use second-generation stamping on puppies segment of heart.

Technique: Ink stamp in Candy Apple and stamp it on a scratch piece of paper. Then, without re-inking, stamp on 7D.

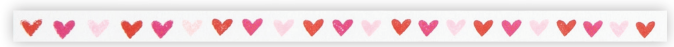
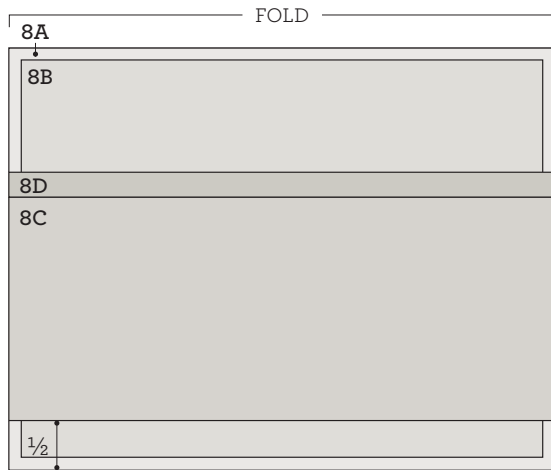


## Assemble:

1. Prepare piece shown above
2. Attach 7A to card base
3. Attach 7B
4. Embellish with shimmer trim
5. Attach 7C with thin 3-D foam tape
6. Attach 7D
7. Embellish with gems

## Project 8

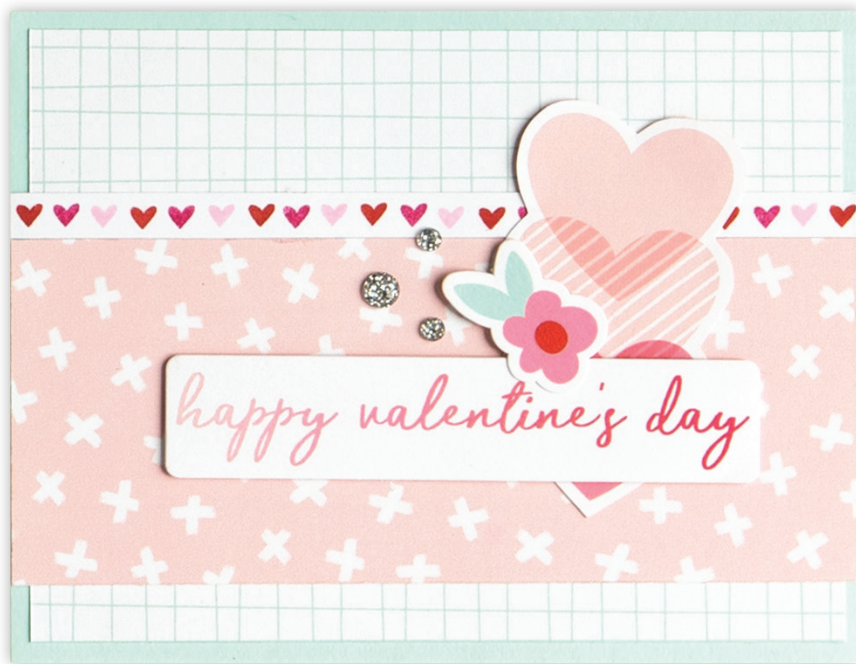
## Prepare:



### 8D:

Paper: White Daisy

Inks: Ballerina, Candy Apple, Raspberry



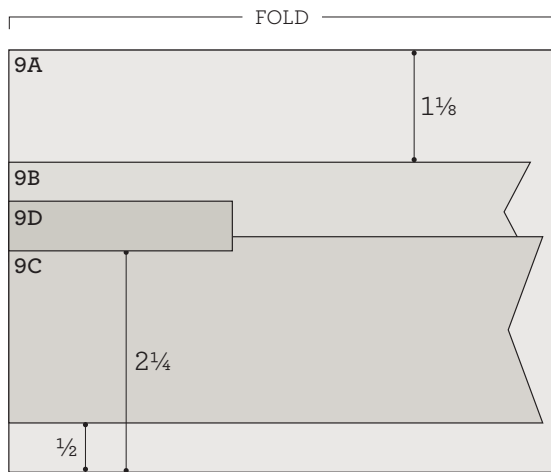
## Assemble:

1. Prepare piece shown above
2. Attach 8A to card base
3. Attach 8B
4. Attach 8C and 8D
5. Attach heart accent
6. Embellish with Complements, accent, and gems

*Tip: Attach a few Complements with thin 3-D foam tape for added dimension.*

## Project 9

## Prepare:



you're my  
person

### 9D:

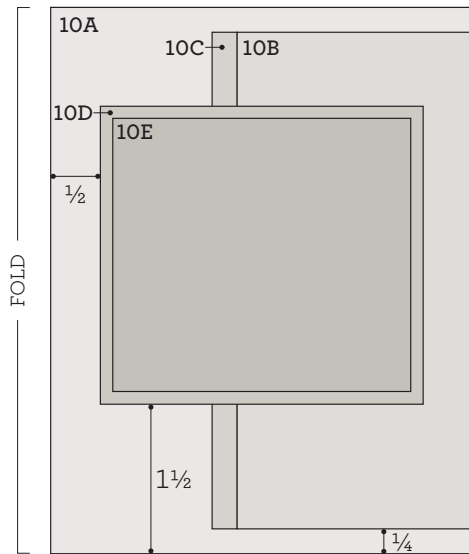
Paper: White Daisy  
Ink: Candy Apple  
Tip: Dovetail.



## Assemble:

1. Prepare piece shown above
2. Attach 9A to card base
3. Dovetail 9B and attach
4. Attach 9C
5. Attach 9D with thin 3-D foam tape
6. Embellish with Complement and gems

## Project 10



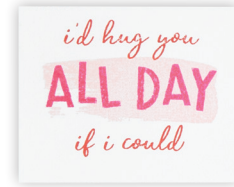
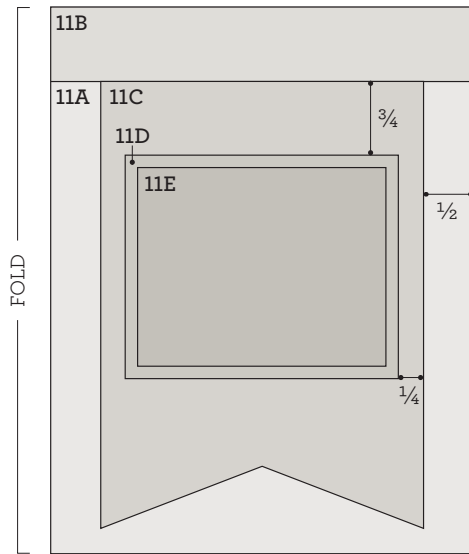
### Assemble:

1. Attach 10A to card base
2. Embellish 10B with shimmer trim
3. Attach 10B and 10C
4. Attach 10D with thin 3-D foam tape
5. Attach 10E
6. Embellish with Complements and gems



## Project 11

## Prepare:



### 11E:

Paper: White Daisy

Inks: Ballerina, Candy Apple, Raspberry

Tip: Stamp "ALL DAY" first

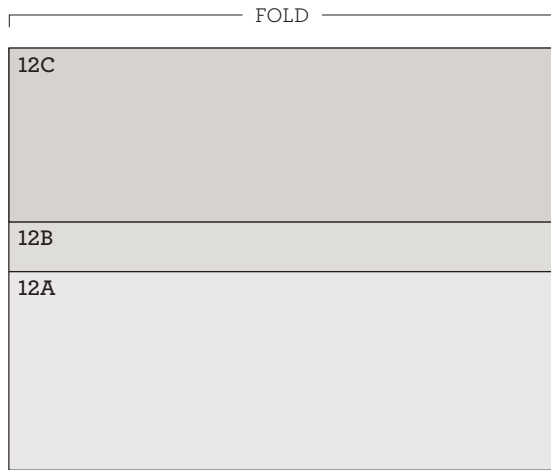


## Assemble:

1. Prepare piece shown above
2. Attach 11A to card base
3. Attach 11B
4. Dovetail 11C and attach
5. Attach 11D
6. Attach 11E with thin 3-D foam tape
7. Embellish with shimmer trim and gems

Project 12

Prepare:



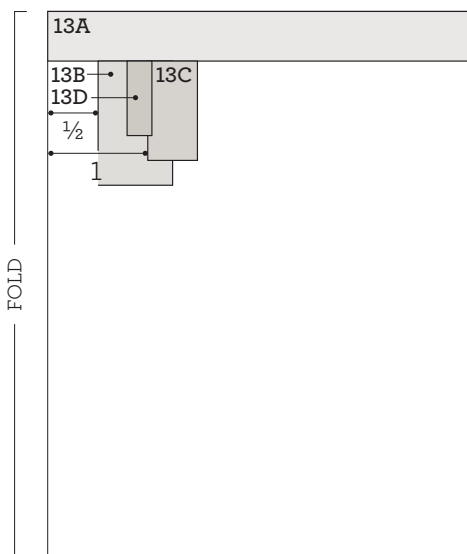
**Accent:**  
Paper: Complement  
Inks: Candy Apple, Sapphire



Assemble:

1. Prepare piece shown above
2. Attach 12A, 12B, and 12C to card base
3. Embellish with shimmer trim
4. Attach prepared complement with thin 3-D foam tape
5. Embellish with gems

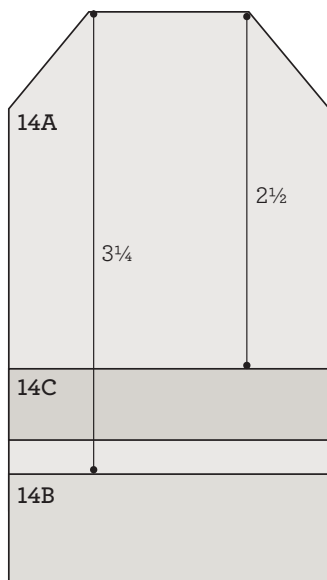
## Project 13



### Assemble:

1. Attach 13A to card base
2. Dovetail and attach 13B and 13C
3. Embellish with shimmer trim, as shown
4. Dovetail 13D and attach
5. Stamp sentiment with Candy Apple and Sapphire inks on card base
6. Embellish with Complement

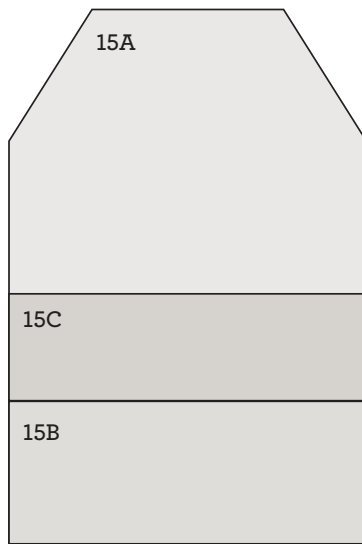
## Project 14



### Assemble:

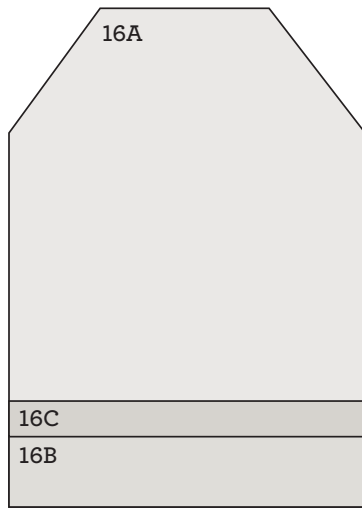
1. Use 14A for tag base
2. Attach 14B
3. Embellish with shimmer trim
4. Attach 14C
5. Stamp sentiment and hearts with Ballerina, Candy Apple, and Raspberry inks on tag base, as shown
6. Embellish with gems
7. Punch hole in top of tag

## Project 15



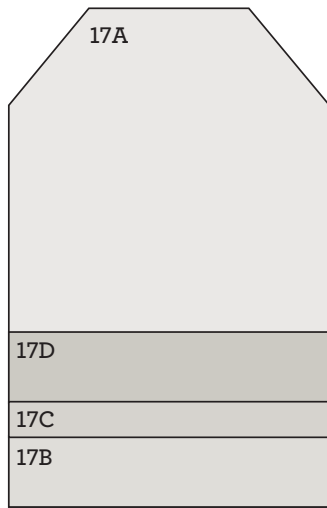
### Assemble:

1. Use 15A for tag base
2. Attach 15B and 15C
3. Embellish with Complement  
*Tip: Attach with thin 3-D foam tape*
4. Punch hole in top of tag



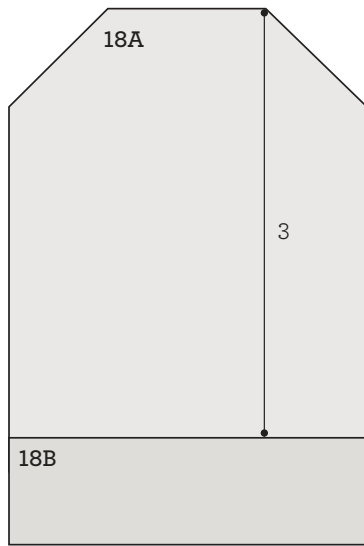
**Assemble:**

1. Use 16A for tag base
2. Attach 16B and 16C
3. Stamp sentiment with Sapphire ink on card base
4. Embellish with gems
5. Punch hole in top of tag



**Assemble:**

1. Use 17A for tag base
2. Attach 17B, 17C, and 17D
3. Stamp sentiment and hearts with Raspberry and Sapphire inks on tag base, as shown
4. Embellish with gems
5. Punch hole in top of tag



**Assemble:**

1. Use 18A for tag base
2. Attach 18B
3. Embellish with shimmer trim
4. Stamp sentiment and hearts with Candy Apple and Sapphire inks on tag base, as shown
5. Punch hole in top of tag