

SMITTEN | 1 single page, 1 layout, 12 slimline cards (2 each of 6 designs), 12 treat containers

Materials Needed:

CC122113 Smitten Workshop Kit
 Z6517 Lemonade Exclusive Inks™ Stamp Pad
 Z2812 Raspberry Exclusive Inks™ Stamp Pad
 Z4189 Intense Black Exclusive Inks™ Stamp Pad
 Z2475 Brown Grey TriBlend™ Marker
 Z2530 Pale Pink Shades TriBlend™ Marker
 Z3515 Black Journaling Pen (.01)
 Z3224 Small Round Waterbrush
 Z1513 White Gel Pens
 Z697 Round Sponge
 Y1000 1" × 1" My Acrylix® Block
 Y1002 1" × 3½" My Acrylix® Block

Y1003 2" × 2" My Acrylix® Block
 Y1006 3" × 3" My Acrylix® Block
 Y1009 2" × 3½" My Acrylix® Block
 Z2060 Thin 3-D Foam Tape
 Z341 Glue Dots Mini Dots
 Die Cutting & Embossing Machine
 Paper Trimmer
 Scissors
 Adhesive
 Bone Folder or Embossing Stylus
 Ruler

Gather photos (6 total)

(P) = portrait (L) = landscape

	3 × 4 (L)	4 × 6 (P)
Project 1	2	-
Project 2	2	2

Getting Started:

- Gather all materials needed.
- Trim all zip strips and set aside. The zip strip is the ½" accent paper along the top of each sheet of patterned paper.
- Check the cut orientation below each cutting guide image. This will show you how to cut the paper, keeping the patterns on your project pieces facing the right direction.
- Light grey pieces on your cutting guide are scrapbooking project pieces. Dark grey pieces are card and treat container project pieces. White pieces are leftover paper.
- As you cut your paper, label and sort the pieces as indicated in the cutting guide, creating a stack for each project.
- If there is a fold line present in a cutting diagram, cut the paper first before folding it. In order to die-cut two shapes at once, place the die on top of the folded paper or stack two paper pieces before running the paper through your die-cutting machine.

Key:

✂ = first cut | * = use back of paper | P = Project

- - - - = cut line

..... = fold line

■ = suggested stamp arrangement

■ = suggested Thin Cuts arrangement

Cutting Diagrams:

zip strips



2A: 12 × ½



2K: 12 × ½



1B: 11½ × ½



8F: 3 × ½

8F: 3 × ½

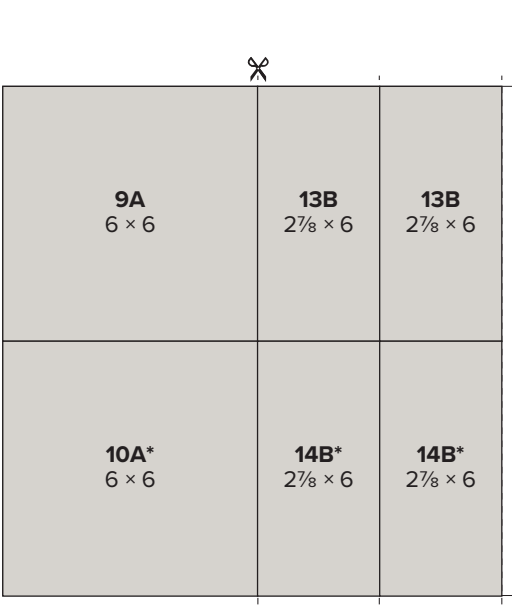
1N: 1½ × ½



1C: 11½ × ½



2E: 11 × ½



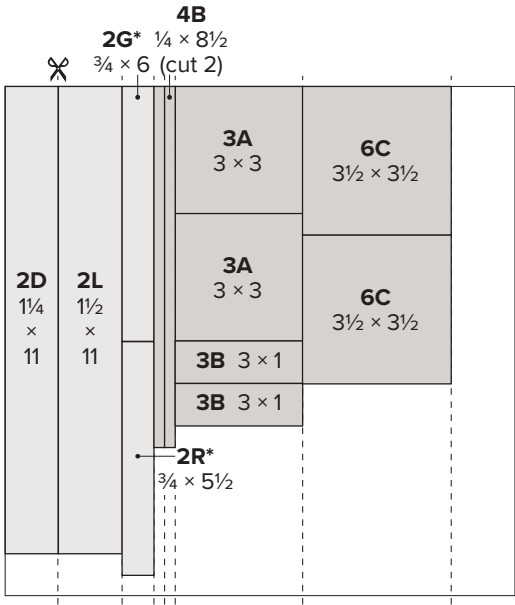
cut orientation



front



*back



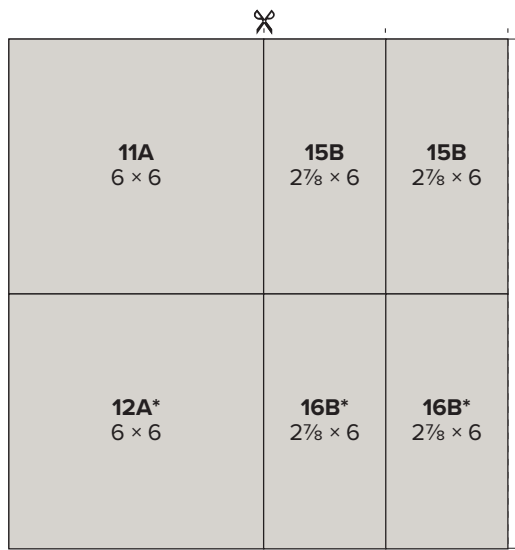
cut orientation



front



*back



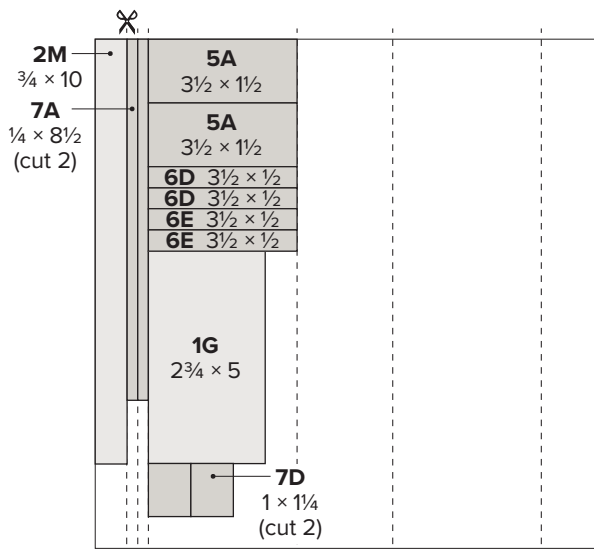
cut orientation



front



*back



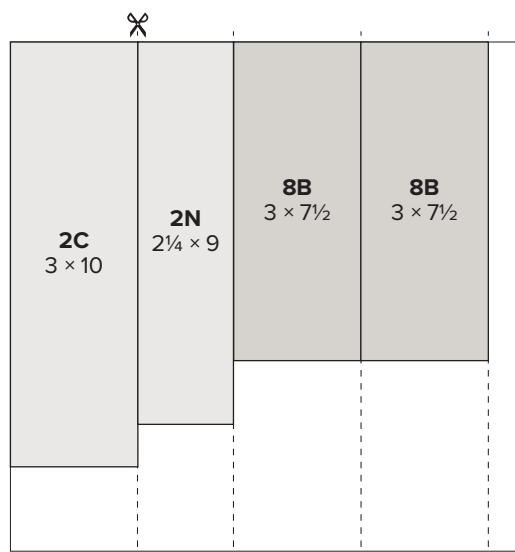
cut orientation



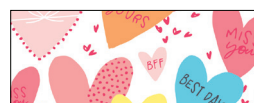
front



*back



cut orientation

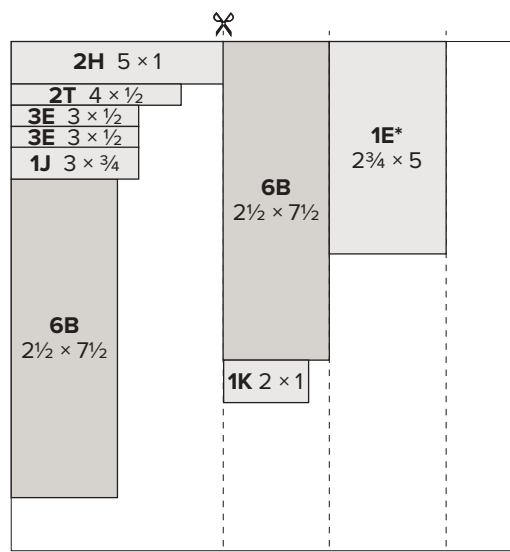


front



*back

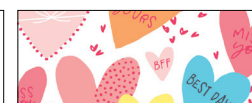
Tip: Save scraps for hand trimmed heart in project 1.



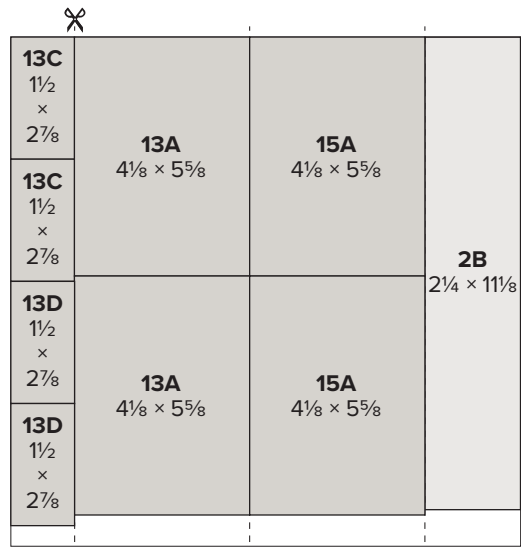
cut orientation



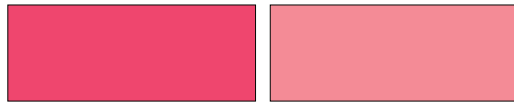
front



*back

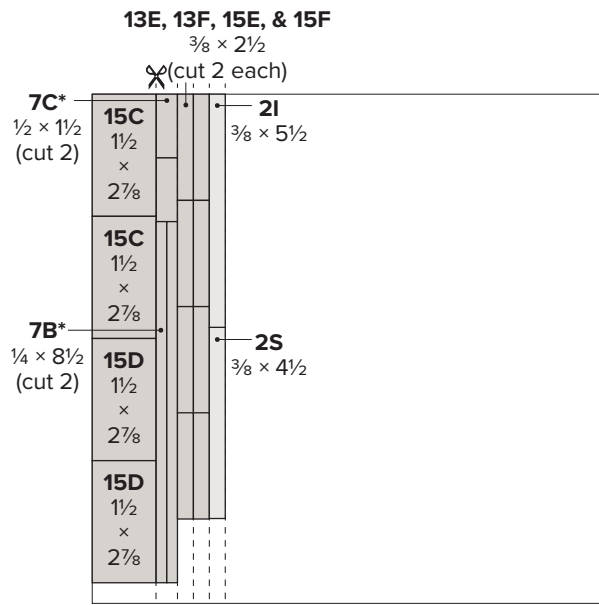


Raspberry cardstock

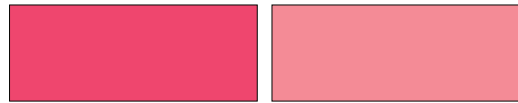


dark

*light

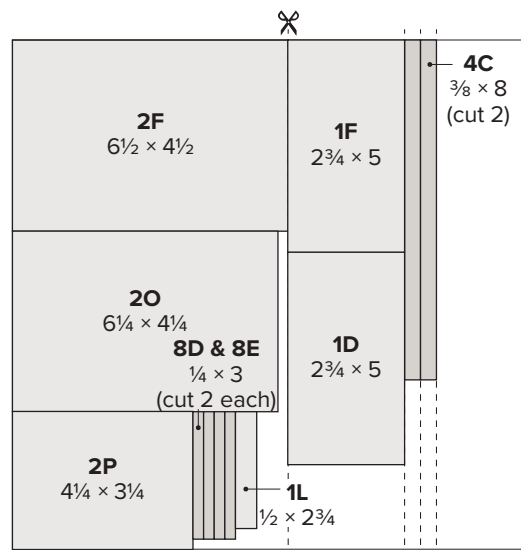


Raspberry cardstock



dark

*light

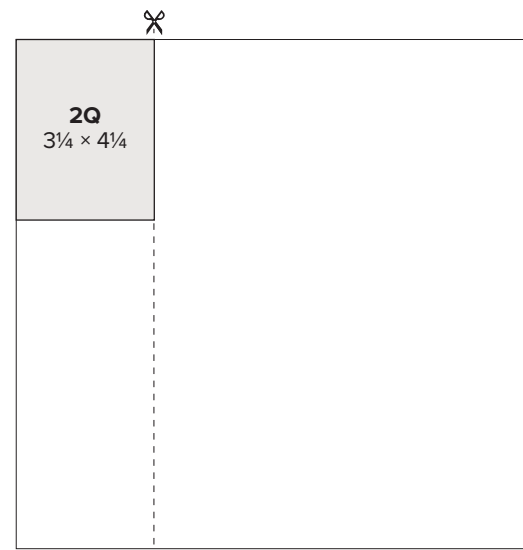


Capri cardstock

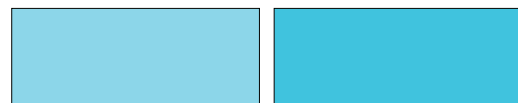


light

*dark

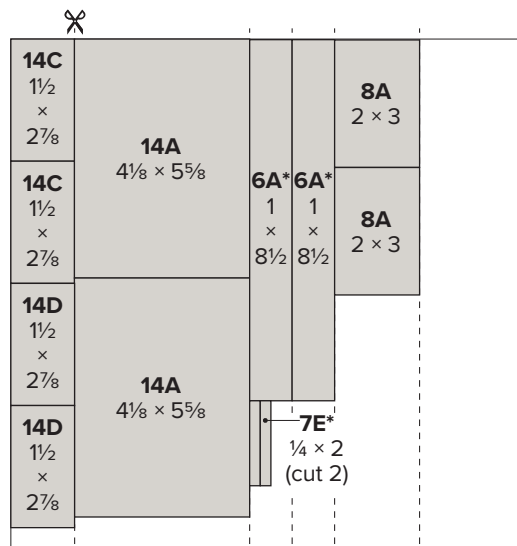


Capri cardstock

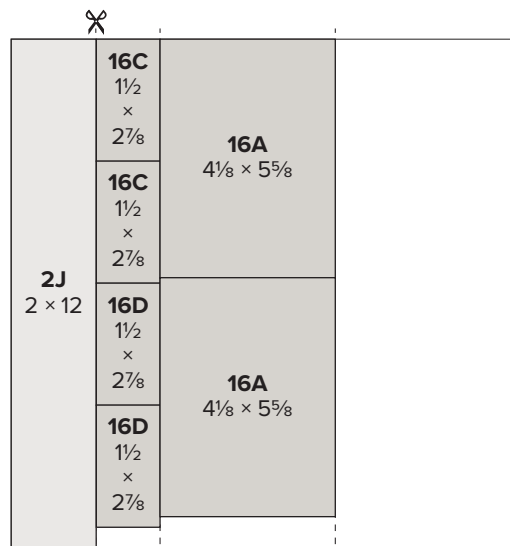
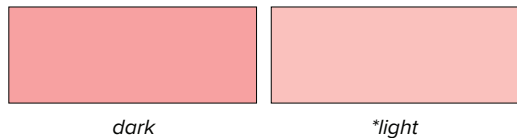


light

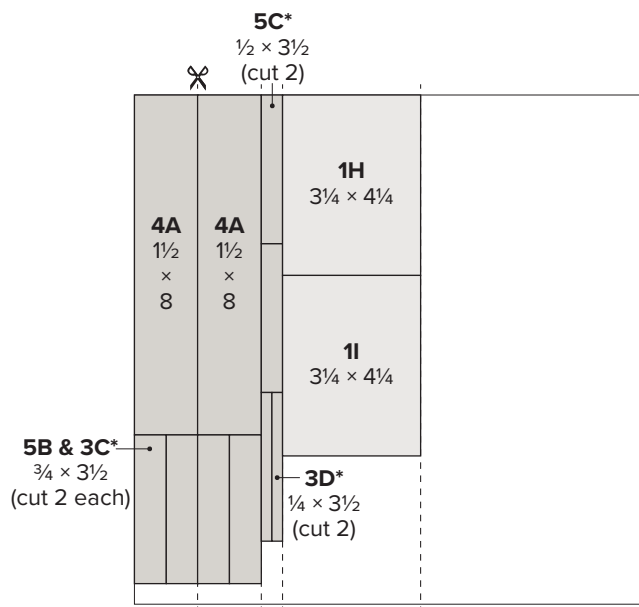
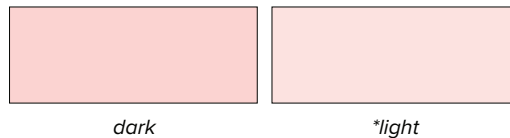
*dark



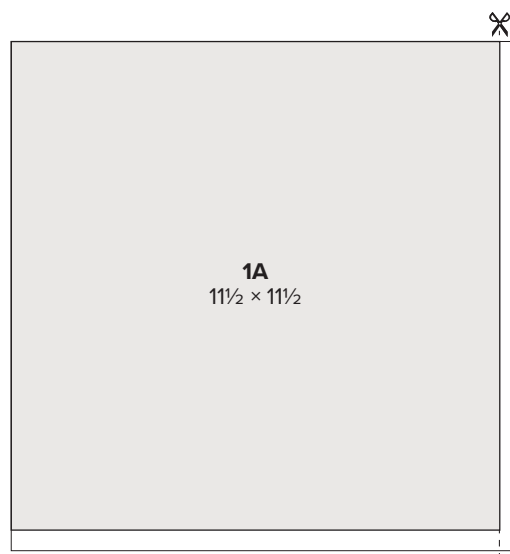
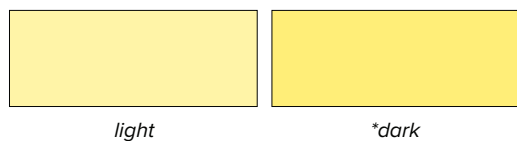
Flamingo cardstock



Ballerina cardstock

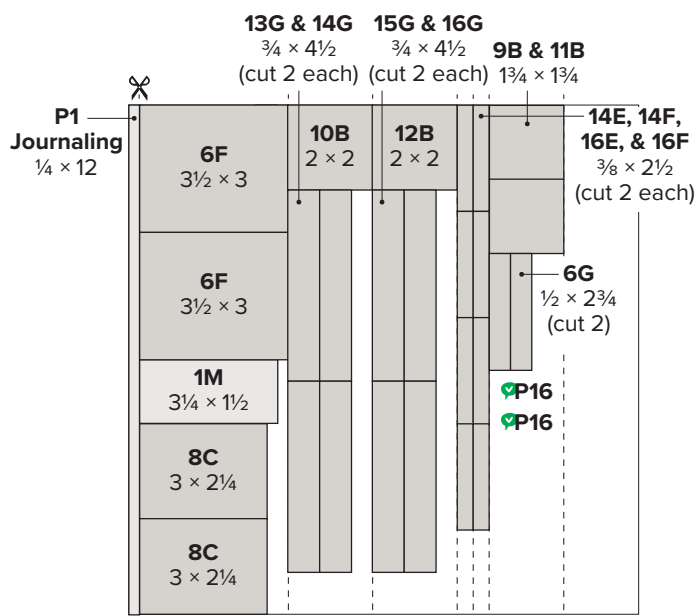


Lemonade cardstock

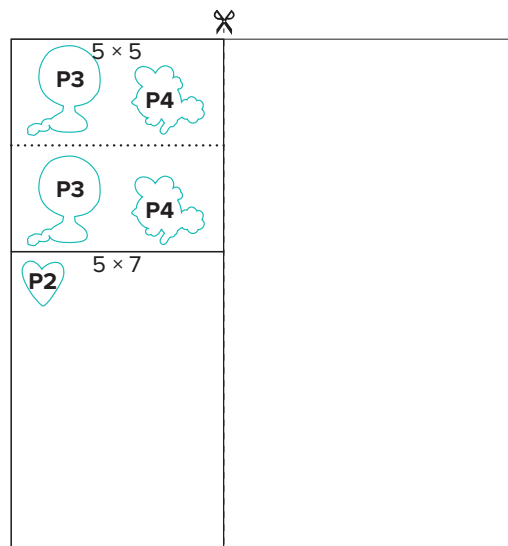


White Daisy cardstock





White Daisy cardstock



White Daisy cardstock



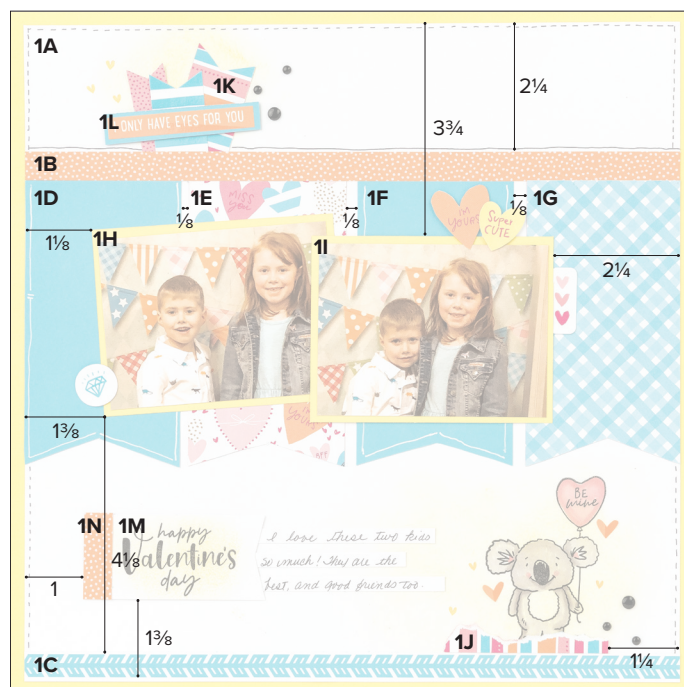
Tip: See the Getting Started section on page one for additional information on how to make two die-cuts at once.

Project 1: Single Page



Prepare:

- Draw stitched lines around 1A with black journaling pen, as shown
- Add color to upper left and lower right of 1A with sponge and Lemonade ink, as shown
- Add color to 1M with Lemonade ink and sponge, then stamp “happy Valentine’s day” on top of sponged color with Intense Black ink, then dovetail, as shown
- Hand trim one large Nectarine heart from scrap of large heart paper



Assemble:

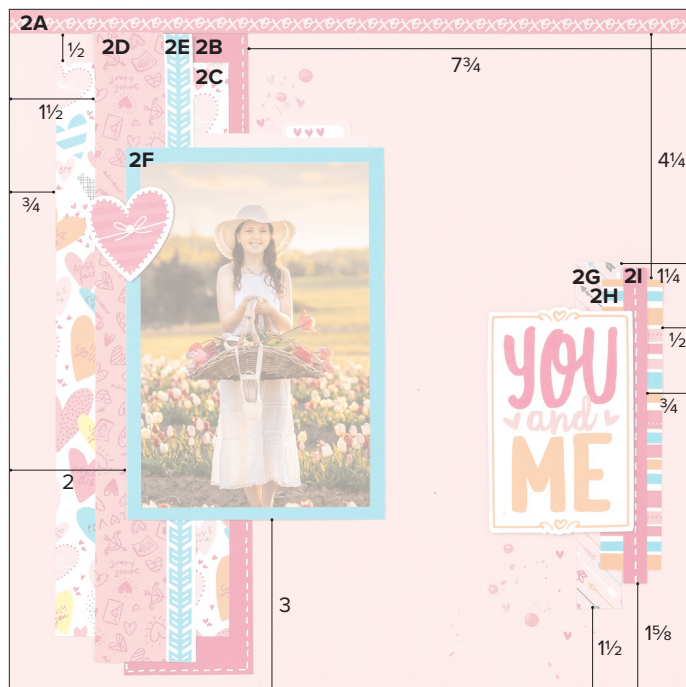
1. Use Lemonade cardstock for base page
2. Attach prepared 1A
3. Attach 1B and 1C
 - Tip: Do not use adhesive on center left section of 1B so other pieces may be tucked behind in a later step.*
4. Draw line above 1B with black journaling pen, as shown
5. Dovetail and attach 1D, 1E, 1F, and 1G
 - Tip: Add lines to 1D and 1F with (.10) white gel pen.*
6. Stamp koala on base page with Intense Black ink, as shown
 - Tip: Add color to stamped image with lightest, middle and darkest shades of the Brown Grey TriBlend marker and lightest, middle, and darkest shades of the Pale Pink Shades TriBlend markers.*
7. Attach photos to 1H and 1I
8. Attach 1H and 1I with thin 3-D foam tape
9. Tear about 1/2" from one long edge of 1J and attach
10. Dovetail 1K and attach, as shown
 - Tip: Tuck slightly behind 1B.*
11. Attach “I ONLY HAVE EYES FOR YOU” sticker to 1L, as shown
12. Embellish with stickers, prepared 1L, hand trimmed heart, and dots, as shown
 - Tip: Attach a few of these with thin 3-D foam tape for added dimension.*
13. Attach 1N to prepared 1M, then attach 1M with thin 3-D foam tape
14. Stamp tiny heart on base page with Lemonade ink, as shown
15. Trim journaling strips as desired, add journaling, and attach, as shown

Project 2: Left Page



Prepare (for both pages):

- Splatter Raspberry ink on both base pages (Ballerina and White Daisy cardstock) in upper left and lower right corners, as shown
Tip: Use Raspberry stamp pad and waterbrush.
Technique: Squeeze closed stamp pad in the center to transfer some ink to the inside lid. Open the pad and use the inked lid as a tray to pick up ink with waterbrush.
- Add stitch line around edges of 2B with (.10) white gel pen, as shown
- Add stitch line to the center of 2I and 2S with (.10) white gel pen, as shown
- Use darkest shade of the Pale Pink Shades TriBlend marker to color 5 small and 3 medium white dots
Tips: Leave on carrier sheet to color. Let dry until ready for use.
Stamp three tiny hearts on one Ballerina tab sticker with Raspberry ink, as shown
- Stamp "ANGEL face on White Daisy cardstock heart accent with Raspberry ink



Assemble:

1. Use prepared Ballerina cardstock for base page
2. Attach 2A
3. Attach prepared 2B
4. Attach 2C, 2D, and 2E
5. Attach 2F with thin 3-D foam tape
Tip: Do not use adhesive on top edge of 2F so another piece may be tucked behind in a later step.
6. Attach 2G, 2H, and prepared 2I
7. Attach photo
8. Embellish with stickers, prepared sticker, dot, and prepared dots, as shown
Tips: Tuck prepared tab sticker slightly behind 2F. Attach a few stickers with thin 3-D foam tape for added dimension.
9. Stamp tiny heart on base page with Raspberry ink, as shown
Tip: Use second-generation stamping technique for some hearts.
Technique: Ink the stamp in Raspberry ink and stamp it on the base page, then, without re-inking, stamp on the base page again.

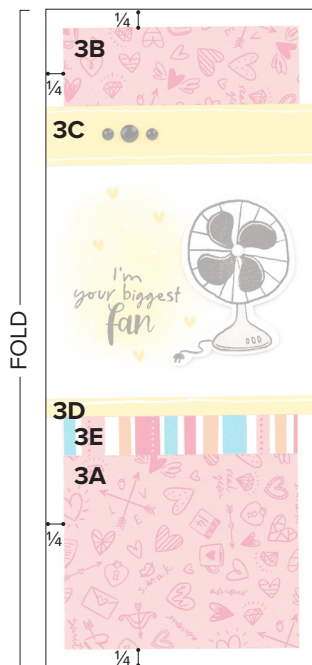
Project 2: Right Page



Assemble:

1. Use prepared White Daisy cardstock for base page
2. Attach 2J, 2K, 2L, 2M, and 2N
3. Attach 2O, 2P, and 2Q with thin 3-D foam tape
Tip: Do not use adhesive along top edge of 2O or along right sides of 2P and 2Q so other pieces can be tucked behind them in a later step.
4. Attach 2R, prepared 2S, and 2T
Tip: Tuck 2R and prepared 2S slightly under 2P and 2Q.
5. Attach photos
6. Stamp tiny heart on base page with Raspberry ink, as shown
Tip: Use second-generation stamping technique.
Technique: Ink the stamp in Raspberry and stamp it on the base page, then, without re-inking, stamp on the base page again.
7. Embellish with stickers, prepared heart stamp, dots, and prepared dots, as shown
Tips: Tuck tab sticker slightly behind 2O. Attach a few stickers with thin 3-D foam tape for added dimension.
8. Add journaling

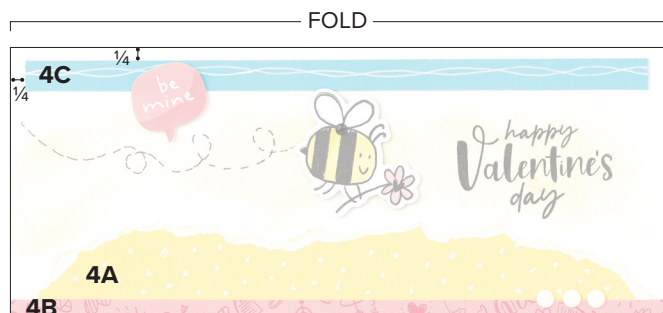
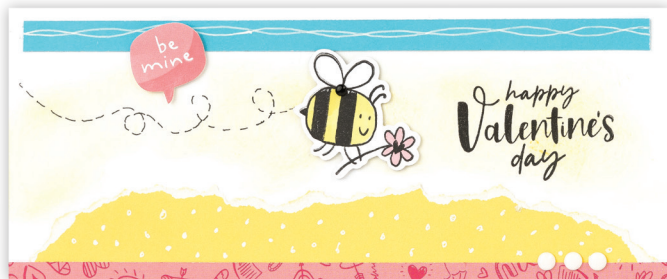
Project 3: Make 2



Assemble:

1. Attach 3A, 3B, 3C, 3D and 3E
2. Add color to card base with Lemonade ink and sponge, as shown
3. Stamp "I'm your biggest fan" on card base with Intense Black ink, as shown
4. Stamp fan with on P3 White Daisy cardstock fan accent with Intense Black ink, as shown
Tip: Add color to fan with lightest shade of Brown Grey TriBlend marker.
5. Stamp tiny hearts on card base with Lemonade ink, as shown
6. Add dots to stamped area with (.10) white gel pen, as shown
7. Add lines to 3C and 3D with (.08) white gel pen, as shown
8. Attach prepared fan accent
9. Embellish with dots

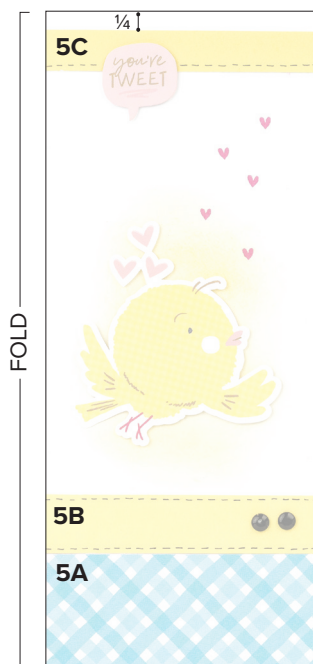
Project 4: Make 2



Assemble:

1. Tear up to $\frac{3}{4}$ " from 4A then attach, as shown
2. Attach 4B and 4C
3. Add color to card base with Lemonade ink and sponge, as shown
4. Stamp "happy Valentine's day" on card base with Intense Black ink, as shown
5. Stamp bee on P4 White Daisy cardstock bee accent with Intense Black ink, as shown, then add color to stamped bee with Lemonade ink, as shown
Tip: Use stamp pad painting.
Technique: Squeeze closed stamp pad in the center to transfer some ink to the inside lid. Open the pad and use the inked lid as a tray to paint from, using a waterbrush.
6. Add color to flower with lightest shade of Pale Pink Shades TriBlend marker, as shown
7. Attach bee accent with thin 3-D foam tape
8. Draw movement lines behind the bee with black journaling pen, as shown
9. Add dots to 4A and lines to 4C with (.08) white gel pen, as shown
10. Embellish with sticker and dots, as shown
Tip: Attach sticker with thin 3-D foam tape.

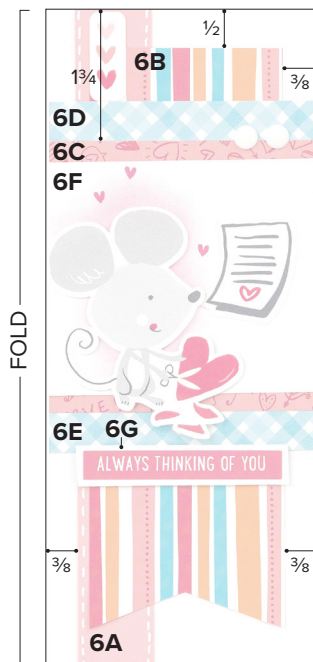
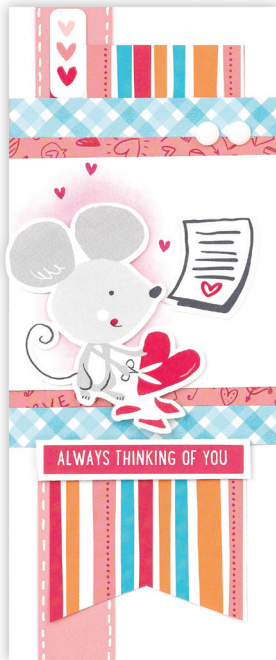
Project 5: Make 2



Assemble:

1. Attach 5A, 5B and 5C
2. Add stitch lines to 5B and 5C with black journaling pen, as shown
3. Add color to card base with Lemonade ink and sponge, as shown
4. Embellish with stickers and dots, as shown
Tip: Attach stickers with thin 3-D foam tape.
5. Stamp tiny hearts on card base with Raspberry ink, as shown

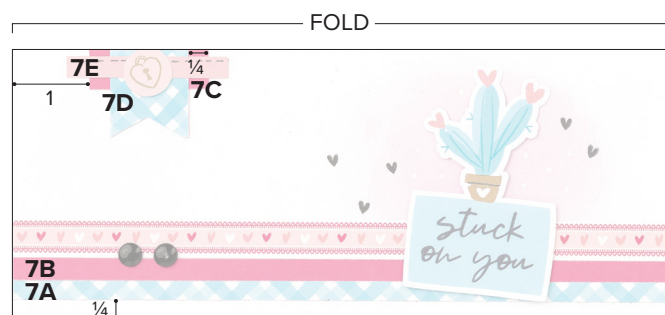
Project 6: Make 2



Assemble:

1. Draw stitch lines on 6A with (.10) white gel pen, as shown
2. Attach 6A
3. Dovetail and attach 6B
4. Attach 6C, 6D, and 6E
5. Add color to 6F with Raspberry ink and sponge, as shown
6. Attach 6F
7. Attach "sealed with a kiss" sticker or "ALWAYS THINKING OF YOU" sticker to 6G
8. Attach 6G, as shown
9. Embellish with stickers and dots, as shown
Tip: Attach a few stickers with thin 3-D foam tape for added dimension.
10. Stamp tiny hearts on card base with Raspberry ink, as shown

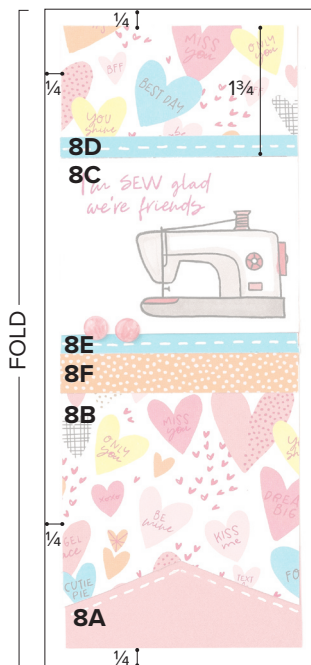
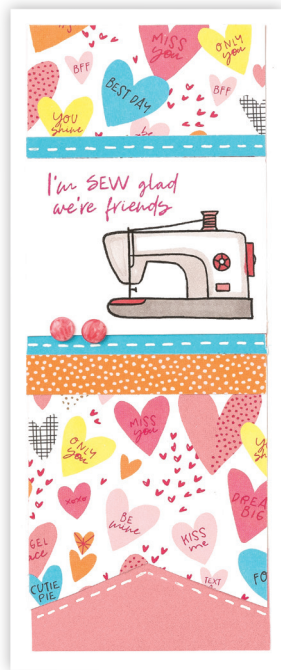
Project 7: Make 2



Assemble:

1. Draw stitch lines on 7E with black journaling pen, as shown
2. Attach 7A, 7B, and 7C
3. Dovetail and attach 7D, as shown
4. Attach 7E, as shown
5. Add color to card base with Raspberry ink and sponge, as shown
6. Add dots to sponged area with (.10) white gel pen, as shown
7. Embellish with stickers and dots, as shown
Tips: Trim border stickers to measure 8½", then attach these stickers first. Attach a few stickers with thin 3-D foam tape for added dimension
8. Stamp tiny hearts on card base with Intense Black ink, as shown

Project 8: Make 2



Assemble:

1. Draw stitch lines on 8D and 8E with (.10) white gel pen, as shown
2. Add color to four large white dots with darkest shade of the Pale Pink Shades marker
Tips: Leave on carrier sheet to color. Let dry until ready for use.
3. Attach 8A
4. Dovetail and attach 8B
5. Stamp sewing machine on 8C with Intense Black ink, as shown
Tip: Add color to sewing machine with lightest, middle, and darkest shades of Brown Grey TriBlend Marker and lightest, middle, and darkest shades of the Pale Pink Shades TriBlend marker, as shown.
6. Stamp "I'm SEW glad we're friends" on 8C with Raspberry ink, as shown
7. Attach 8C
8. Attach 8D, 8E, and 8F
9. Add stitch line to 8A with (.10) white gel pen, as shown
10. Embellish with dots

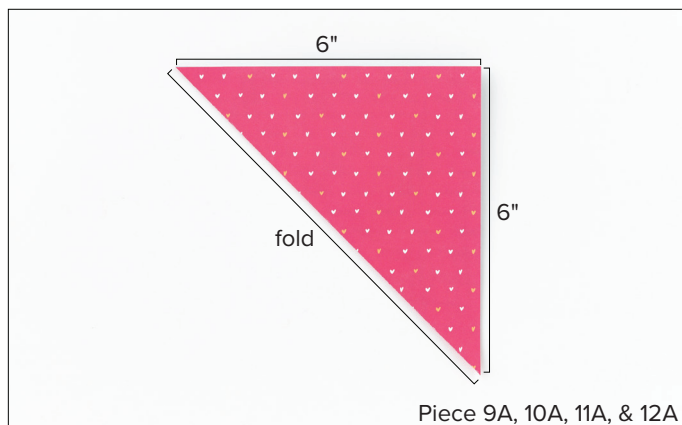


Prepare:

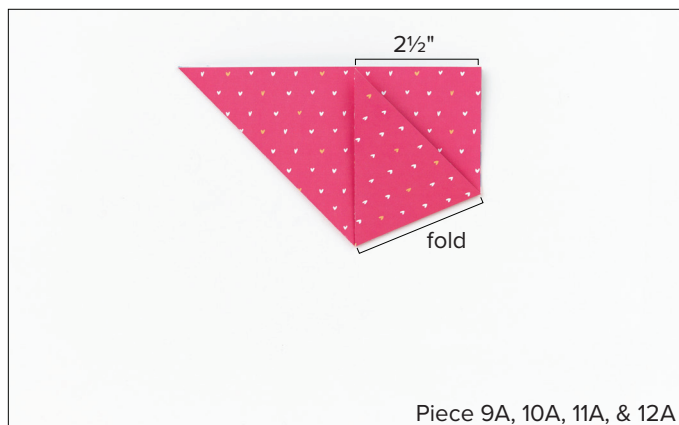
- Stamp tiny hearts on 9B with Raspberry ink, as shown
- Stamp bee on 10B with Intense Black ink, as shown
- Add color to stamped bee on 10B with Lemonade ink and waterbrush
Tip: Use stamp pad painting.
Technique: Squeeze closed stamp pad in the center to transfer some ink to the inside lid. Open the pad and use the inked lid as a tray to paint from, using a waterbrush.
- Add color to the flower with middle shade of Pale Pink Shades TriBlend marker
- Stamp lemon and tiny hearts on 11B with Lemonade and Raspberry inks, as shown
Tip: Use the selective inking technique.
Technique: Carefully apply Raspberry ink to the hearts, then carefully apply Lemonade ink to the lemon wedge, then stamp on 11B.
- Stamp "happy Valentine's day" on 12B with Intense black ink, as shown
- Draw stitch lines or straight lines around 9B, 10B, 11B, and 12B with black journaling pen, as shown
- Add color to two small white dots with darkest shade of Pale Pink Shades TriBlend marker, as shown

Assemble:

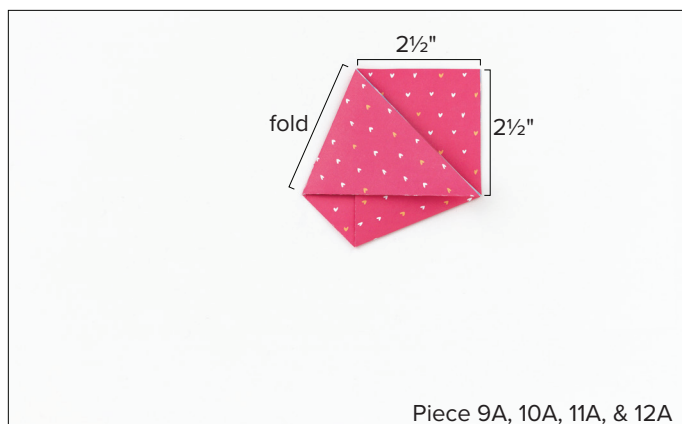
1. Fold 9A, 10A, 11A, and 12A in half diagonally



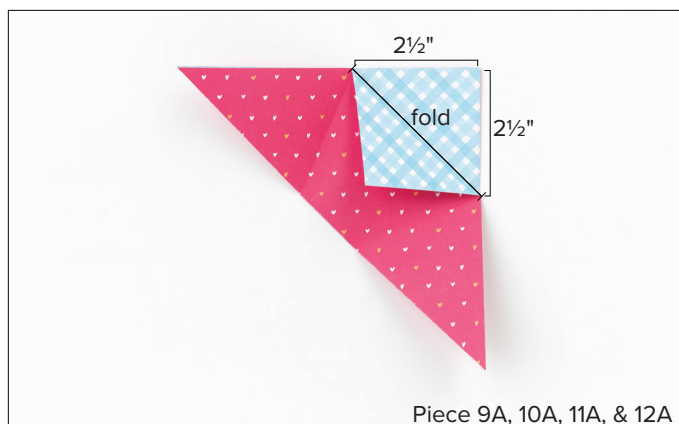
2. Make a mark at the $2\frac{1}{2}$ " point on the left edge of your triangle nearest the right angle and make first angled fold by folding bottom triangle point up to the $2\frac{1}{2}$ " line on top



3. Make second angled fold by folding the remaining point down to the $2\frac{1}{2}$ " mark matching the edges with the first fold



4. Open up the two angled folds and fold down the triangle tip at the $2\frac{1}{2}$ " marks



5. Lift the triangle tip fold back up and refold the angled folds as before



6. Insert the triangle fold into the space between the edges of the second angled fold



7. Use your finger to gently curve the bottom of the treat container



8. Attach 9B, 10B, 11B, and 12B with thin 3-D foam tape
Tip: See *photos on page 16*.
9. Embellish with stickers, dots, and colored dots
Tips: Attach stickers with thin 3-D foam tape. See *photos on page 16*.
10. Insert candy

Projects 13-16: Make 2 each

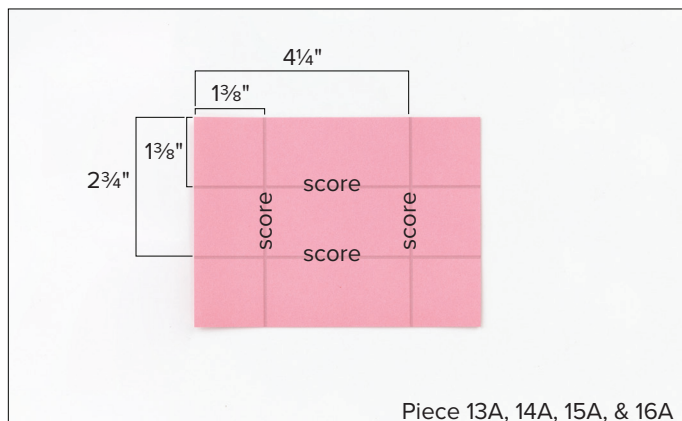


Prepare:

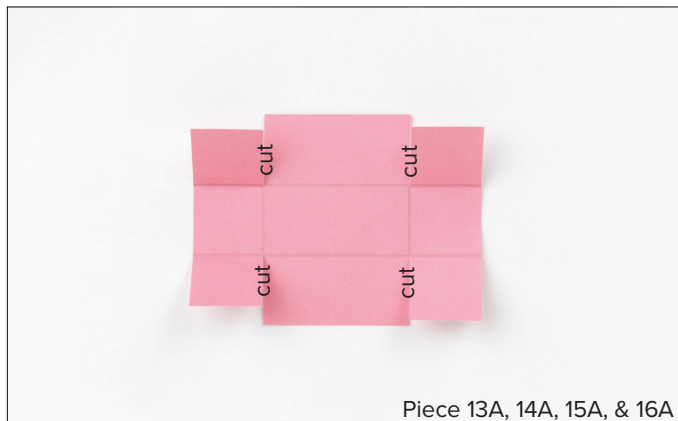
- Fold 13G, 14G, 15G, and 16G in half then dovetail open end of each one, as shown
- Add color to 13G and 15G with Lemonade ink and sponge, as shown
- Stamp "Will you BEE mine?" on 13G and 15G with Intense Black ink, as shown
- Stamp "YOU'RE SUBLIME VALENTINE" on 16G with Intense black ink, as shown
- Stamp "blowing kisses" on 14G with Raspberry ink, as shown
- Stamp two small speech bubble hearts on White Daisy cardstock with Raspberry ink, then hand trim
- Draw stitch lines or straight lines around 13G, 14G, 15G, and 16G with black journaling pen, as shown

Assemble:

1. Score 13A, 14A, 15A, and 16A at $1\frac{3}{8}$ " and $2\frac{3}{4}$ ", then score at $1\frac{3}{8}$ " and $4\frac{1}{4}$ "



2. Cut along the $1\frac{3}{8}$ " score lines to the next score line on the long sides only
3. Fold along each score line



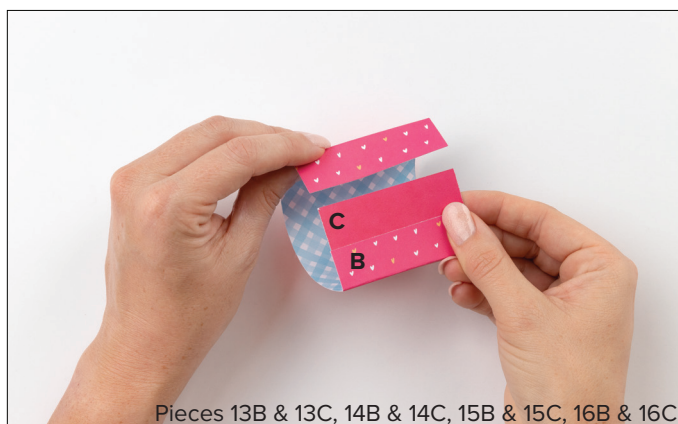
4. Attach the $1\frac{3}{8}$ " corners to the inside of long edges on both ends to form a $1\frac{3}{8}$ " x $2\frac{7}{8}$ " box



5. Score 13B, 14B, 15B, and 16B at $\frac{3}{4}$ " in from each short end



6. Attach the $\frac{3}{4}$ " scored ends of 13B, 14B, 15B, and 16B respectively to 13C, 14C, 15C, and 16C to form tunnel



7. Attach 13D, 14D, 15D, and 16D to the bottom of each respective tunnel



8. Insert the boxes into each tunnel respectively
9. Attach 13E to 13F and attach 15E to 15F
Tips: Add stitch lines to long sides with (.05) white gel pen, as shown. See photos on page 19.
10. Attach 13F and 15F to sides of mailboxes, as shown
Tips: Attach with glue dots. See photos on page 19.
11. Attach 14E to 14F and attach 16E to 16F
Tips: Add stitch lines to long sides with black journaling pen. See photos on page 19.
12. Attach 14F and 16F to sides of mailboxes, as shown
Tips: Attach with glue dots. See photos on page 19.
13. Attach the stamped and dovetailed flags (13G–16G) to the top of 13F–16F on the inside of the fold
Tip: See photos on page 19.
14. Stamp two small heart speech bubbles on White Daisy cardstock with Raspberry ink, then hand trim
15. Embellish with stickers, stamped speech bubbles, and dots, as shown
Tips: Attach stamped accents with glue dots. See photos on page 19.
16. Insert candy into boxes, then re-insert boxes into tunnels