

Advent Calendar Workshop



Additional Materials Needed:

Z3296 Cricut® Season of Joy Digital Collection
B1634 My Acrylix® Snug Backgrounds Stamp Set
Z3274 Clear Sparkles
Z4170 New England Ivy Burlap Ribbon

Additional Optional Materials:

Z6509 Candy Apple Exclusive Inks™ Stamp Pad
Z2835 New England Ivy Exclusive Inks™ Stamp Pad
1772 Glue Dots® Ultra-thin Dots
Z553 Bonding Memories™ Dual Action Glue Pen
Z1204 Bone Folder
Z1382 Tweezers
Sticky notes

Getting Started

- Gather all additional materials needed.
- Trim all zip strips and set aside. The zip strip is the ½" accent paper along the top of each sheet of patterned paper.

Step 1—Cricut® Cuts

Cut the following boxes and embellishments using the Cricut® Season of Joy Collection from the Cricut Design Space™ project files created for this workshop. Depending on the type of Cricut® machine you have, you can use either a Cricut® scoring stylus or scoring wheel when cutting the project files.

Tip: To use the Design Space project files, you must own the Season of Joy Cricut® Collection. Make sure you access the file for the first time from a desktop or laptop computer. You can save the files and then open them on the mobile app on other devices.

• Cut Advent Calendar Outer Boxes

- Advent Calendar – Outer Boxes project file

<https://design.cricut.com/#/design/103798788>

Paper: New England Ivy cardstock (12 sheets)

Tips: To fit two boxes per cardstock sheet, the outer boxes will cut close to the top and bottom edges of your cardstock. Design Space will display an alert that the project is larger than 11.5" in height and requires a larger mat. Select "OK" and continue to cut this file with a 12" × 12" mat. Duplicate this file and cut it 12 times using 12 sheets of New England Ivy cardstock.

• Cut Advent Calendar Inner Boxes

- Advent Calendar – Inner Boxes (Two Boxes) project file

<https://design.cricut.com/#/design/103940096>

Paper: Candy Apple plaid paper (2 sheets), Fern words paper (2 sheets), holly paper (1 sheet), chalkboard paper (1 sheet), falling snow paper (1 sheet), Candy Apple cardstock (1 sheet), Linen cardstock (1 sheet)

Tips: Duplicate this file and cut it 9 times using the patterned paper and cardstock listed above. Place the words paper on the cutting mat with the words facing right side up, and place the falling snow paper with the snow at the top on the cutting mat.

- Advent Calendar – Inner Box (One Box) project file

<https://design.cricut.com/#/design/103939802>

Paper: holly paper (1 sheet), chalkboard paper (1 sheet)

Tip: Duplicate this file and cut it 2 times using the patterned paper listed above.

• Cut Advent Calendar Inner Boxes and Embellishments – Cut the project files to make the remaining boxes and all decorative pieces using the following paper and cardstock:

- Advent Calendar – Boxes and Embellishments (Candy Apple) project file

<https://design.cricut.com/#/design/103798960>

Paper: light Candy Apple cardstock (1 sheet)

Tips: Make sure to cut the project files with the light side of the cardstock facing up. Some numbers are flipped in the project file to use the dark side of Candy Apple when embellishing the inner boxes.

- Advent Calendar – Boxes and Embellishments (New England Ivy) project file

<https://design.cricut.com/#/design/103799094>

Paper: New England Ivy cardstock (1 sheet)

- Advent Calendar – Boxes and Embellishments (Fern) project file

<https://design.cricut.com/#/design/103799236>

Paper: Fern cardstock (1 sheet)

- **Advent Calendar – Boxes and Embellishments (Linen) project file**

<https://design.cricut.com/#/design/103799588>

Paper: Linen cardstock (1 sheet)

- **Advent Calendar – Embellishments (White Daisy) project file**

<https://design.cricut.com/#/design/103799369>

Paper: White Daisy cardstock (1 sheet)

Step 2—Assemble the Outer Boxes

- Gather all 25 New England Ivy outer boxes and assemble each box. Outer boxes do not have a thumb notch. Use a Bonding Memories™ glue pen or adhesive of choice to attach the square reinforcement piece to the inside back of each box and then glue all four flaps to the inside of the adjacent sides. This reinforcement square is an additional piece added to the project files to help keep the calendar sturdy once you stack the boxes and fill the drawers.

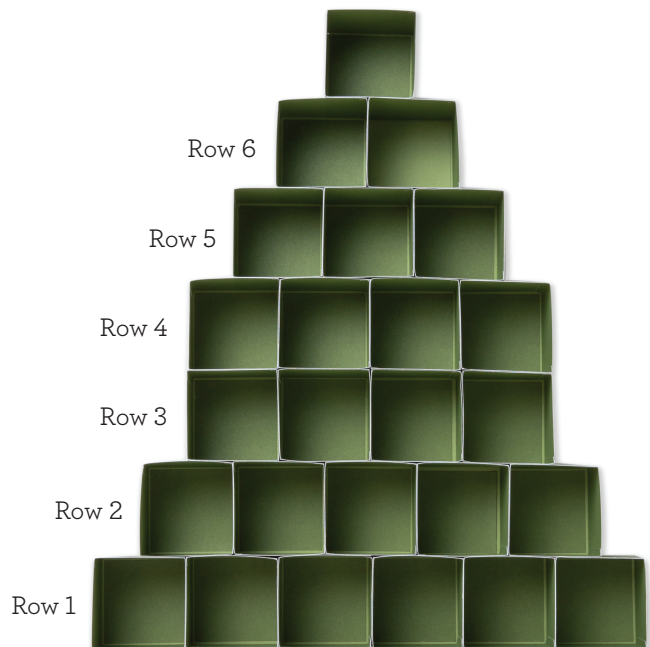
Tip: Use a bone folder to crease all folds.



- Using glue dots, attach boxes together to form the rows listed below. Use a glue dot on each corner and then attach the box to the one next to it. Continue attaching boxes together for each row as listed below.

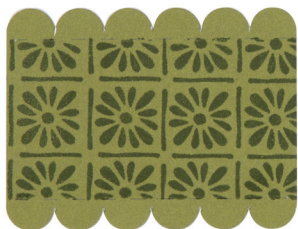
- Row 1: 6 boxes
- Row 2: 5 boxes
- Row 3: 4 boxes
- Row 4: 4 boxes
- Row 5: 3 boxes
- Row 6: 2 boxes

- Using glue dots, attach the assembled rows, one on top of the other, to create the Christmas tree shape for the advent calendar. Attach Row 2 centered on top of Row 1 using glue dots on the bottom corners of each box in Row 2. Repeat with Rows 3 – 6, and finish by attaching the remaining single box on top.



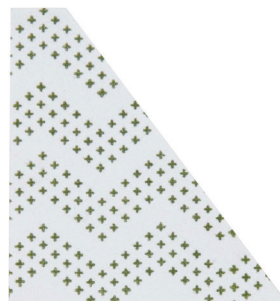
Step 3—Stamp Paper Embellishments

- After assembling the outer boxes, stamp the paper embellishments for the inner boxes using the My Acrylix® Snug Backgrounds stamp set, Candy Apple Exclusive Inks™ stamp pad, and New England Ivy Exclusive Inks™ stamp pad.

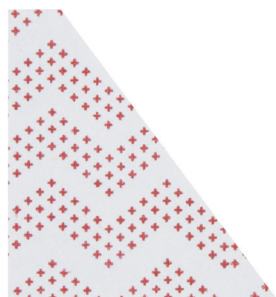


Box 4
Paper: Fern
Ink: New England Ivy

Tip: Use sticky notes to mask the top and bottom before stamping.



Box 11
Paper: Linen
Ink: New England Ivy

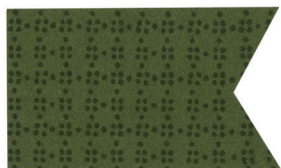


Box 5
Paper: Linen
Ink: Candy Apple

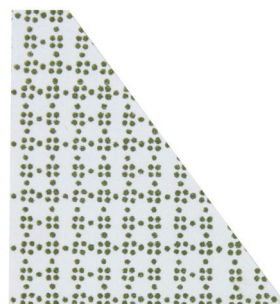


Box 15
Paper: light
Candy Apple

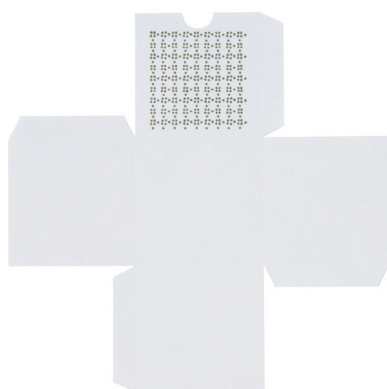
Ink: Candy
Apple



Box 6
Paper: New England Ivy
Ink: New England Ivy



Box 23
Paper: Linen
Ink: New England Ivy



Box 9
Paper: Linen
Ink: New England Ivy

Tip: Center background image on notched face of box.

Step 4—Assemble the Inner Boxes

- Gather all 25 inner boxes and assemble each box. Inner boxes have a thumb notch for the front of the box. Attach the square reinforcement piece to the bottom inside of each box.
- Attach paper embellishments as shown in the photos below.

Tip: Decorative pieces may be attached to the notched front prior to assembling the box. If you choose to add embellishments before assembling the box, make sure to fold the side flap to help you see where to attach pieces on the box front.



Boxes 1 – 6

Tip: For Box 2, attach ornament strings as desired and trim.



Boxes 7 – 14

Tips: For Box 11, trim 3" piece from pinecone zip strip and attach behind stamped piece. For Box 13, attach ornament strings as desired and trim.



Boxes 15 – 25

- Complete the project by embellishing inner boxes with clear sparkles and adding a New England Ivy burlap ribbon bow to the top.