

Optional Featured Technique: Embellishing with Gilt Gloss Spray

Project 1



Project 2



Project 3



Materials Needed:

- G1265 Christmas Story Scrapbooking Workshop Kit
- Z5009 Glit Gloss Spray (optional)
- Z4575 Black LePen™
- Z1151 3-D Foam Tape
- Z697 Round Sponge (optional)
- Z3505 Dual-tip Stylus Embossing Tool (optional)

- Z2045 All-purpose Mat (optional)
- Paper Trimmer
- Scissors
- Adhesive
- Ruler

Gather photos (16 total)

(P) = portrait (L) = landscape

	3 × 3	3 × 4 (P)	3 × 4 (L)	4 × 4	4 × 6 (P)	4 × 6 (L)
Project 1	3	2	-	-	-	-
Project 2	-	1	-	2	2	-
Project 3	1	1	1	1	-	2

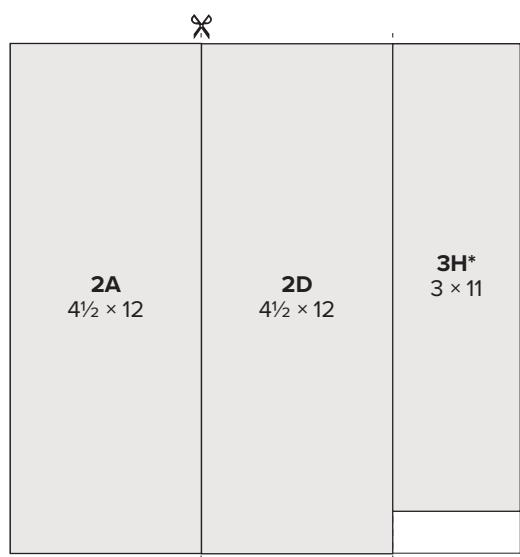
Getting Started:

- Gather all materials needed.
- Trim all zip strips and set aside. The zip strip is the ½" accent paper along the top of each sheet of patterned paper.
- Check the cut orientation below each cutting guide image. This will show you how to cut the paper, keeping the patterns on your project pieces facing the right direction.
- Light grey pieces on your cutting guide are project pieces. White pieces are leftover paper.
- As you cut the paper, label and sort the pieces as indicated in the cutting guide, creating a stack for each project.

Key:

✂ = first cut | * = use back of paper

Cutting Diagrams:



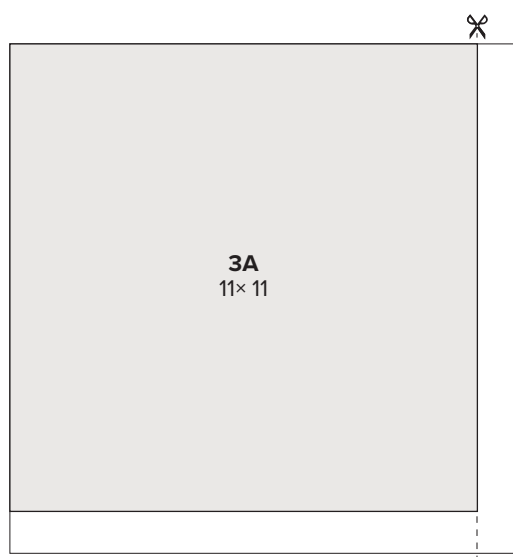
cut orientation



front



*back



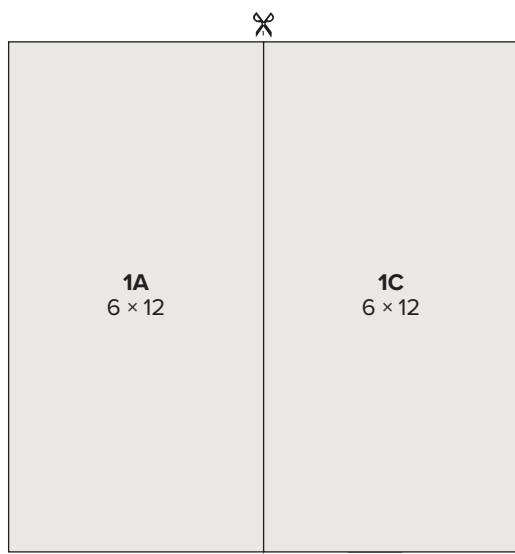
cut orientation



front



*back



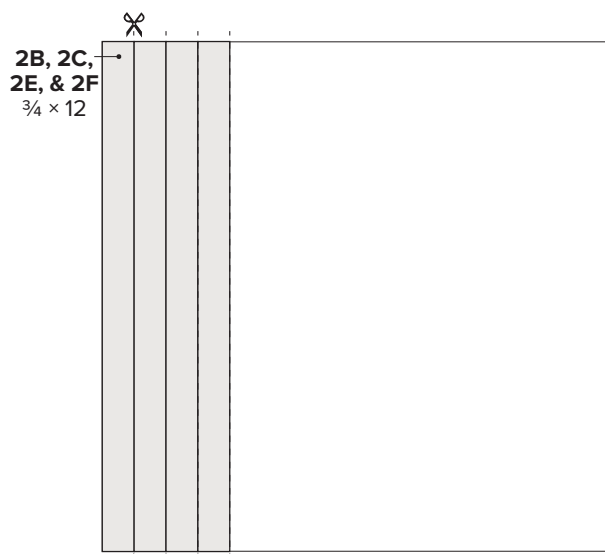
cut orientation



front



*back



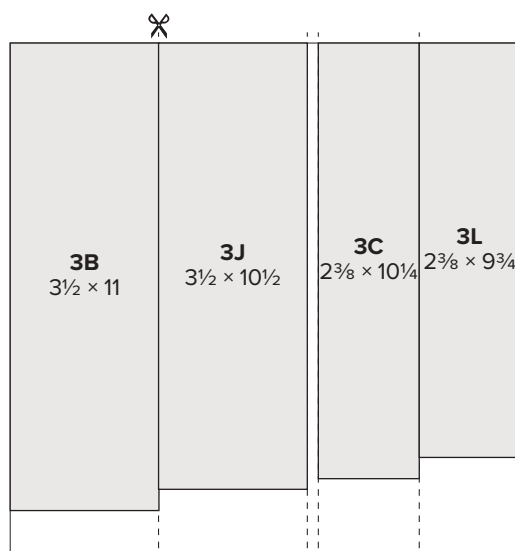
cut orientation



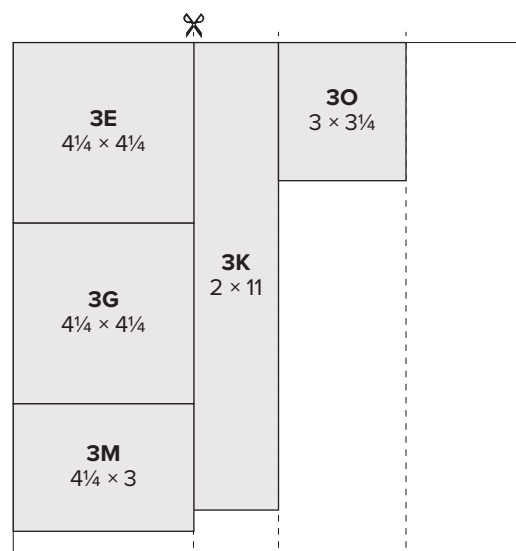
front



*back



Exclusive paper



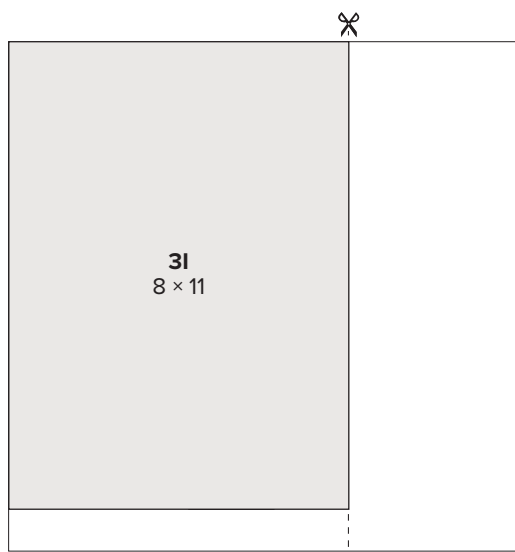
Scarlet cardstock



dark



*light



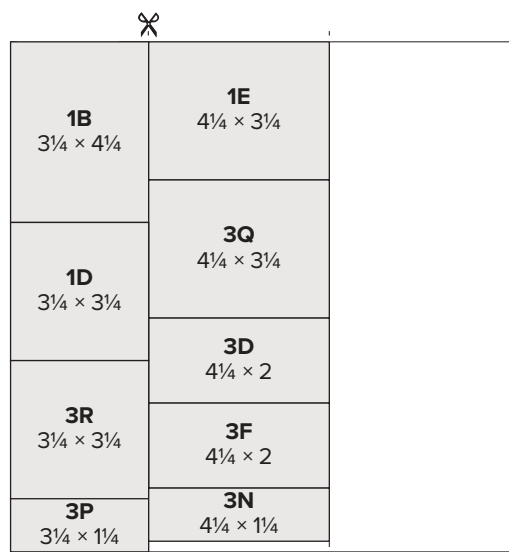
Mink cardstock



dark



*light



Black cardstock

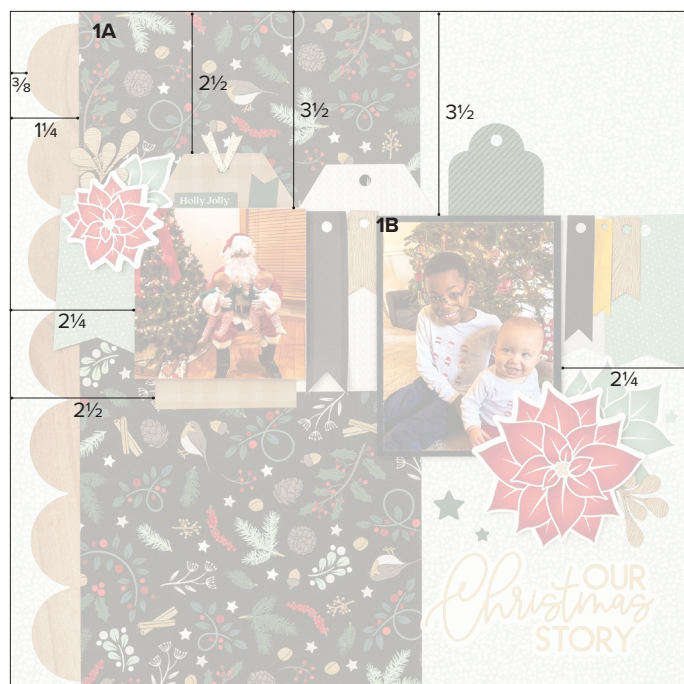


Project 1: Left Page



Prepare (for both pages):

- (Optional) Sponge all three dovetailed French Vanilla pennant die-cuts with gilt gloss spray, then set aside to dry
Tips: Create a puddle of gloss spray on the all-purpose mat. Cut a wedge out of the round sponge and use it to apply the spray. Work in an area you don't mind getting messy. Gloss sprays stain.
Technique: Spray the all-purpose mat with the gloss spray at close range.



Assemble:

- Use exclusive French Vanilla and Sage leaf patterned paper for base page
- Attach wood-patterned scalloped border die-cut
- Attach 1A
- Attach one Toffee plaid tag die-cut
- Attach additional tag and pennant die-cuts, as shown
Tip: Lay these out before attaching.
- Attach 1B with 3-D foam tape
- Attach photos
Tip: Attach the 3" x 3" photo with 3-D foam tape.
- Embellish with stickers and die-cuts
Tip: Attach a few of these with 3-D foam tape for added dimension.



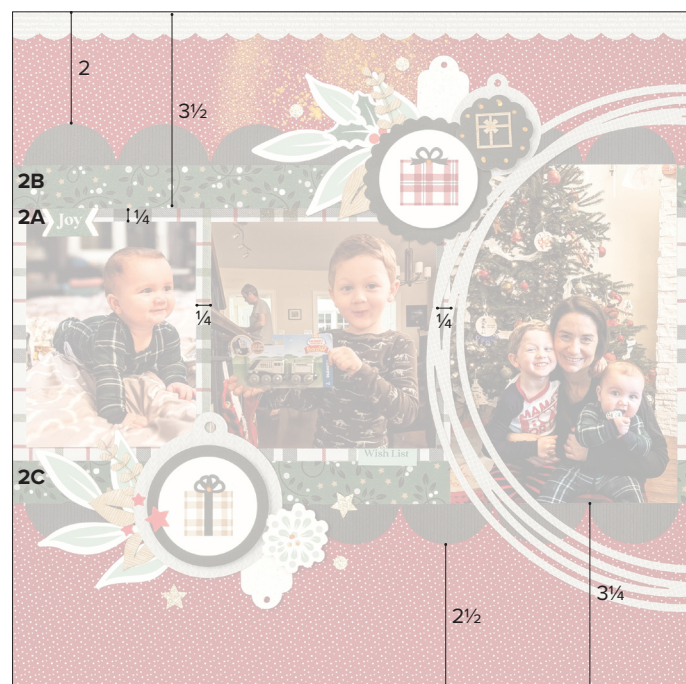
1. Use exclusive French Vanilla and Sage leaf patterned paper for base page
2. Attach wood-patterned scalloped border die-cut
3. Attach 1C
4. Attach both remaining Toffee plaid tag die-cuts
5. Attach remaining tag and pennant die-cuts, as shown
Tip: Lay these out before attaching.
6. Attach 1D and 1E with 3-D foam tape
7. Attach photos
Tip: Attach the top 3" x 3" photo with 3-D foam tape.
8. Embellish with stickers and die-cuts
Tip: Attach a few of these with 3-D foam tape for added dimension.
9. Add journaling

Project 2: Left Page



Prepare (for both pages):

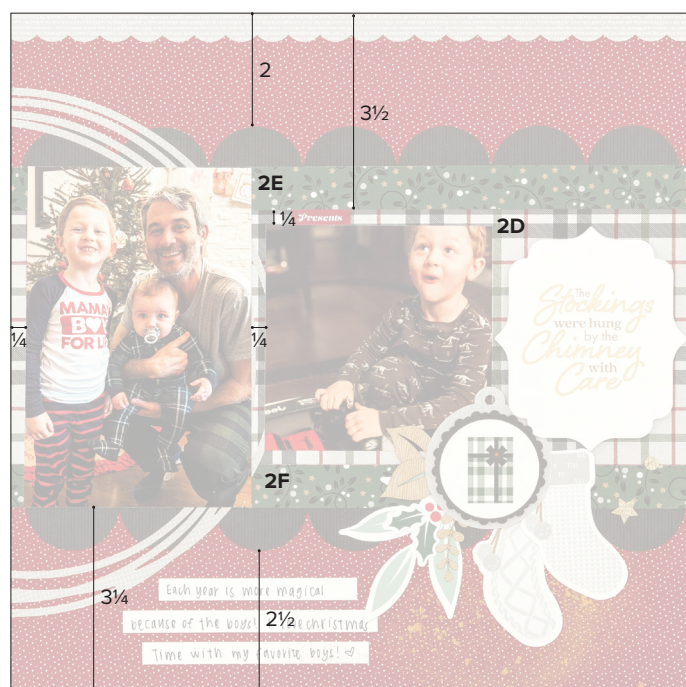
- (Optional) Splatter both base pages (12" × 12" dotted Scarlet patterned paper) with gilt gloss spray, along top center of left base page and bottom right of right base page, as desired, then set aside to dry
Tips: Work in an area you don't mind getting messy. Gloss sprays stain.
Technique: Shake the bottle well with the cap on. Unscrew the spray cap and then, holding the pump straw horizontally, very gently tap the spray cap above the area where you want the droplets to land. Protect any surrounding areas that you don't want the splatters with scratch paper.
- (Optional) Dot bow centers on present die-cuts with gilt gloss spray and embossing stylus, as shown, then set aside to dry
Tip: Clean the stylus with water when you're done.
Technique: Spray the all-purpose mat at close range. Dip the tip of the stylus tool into the spray and press it on the die-cut.
- (Optional) Dot black scalloped circle die-cut and the Sage floral die-cut with gilt gloss spray and embossing stylus, as shown, then set aside to dry
Tip: Clean the stylus with water when you're done.



Assemble:

1. Use prepared dotted Scarlet patterned paper for base page
2. Attach 2A
3. Attach black scalloped border die-cuts
4. Attach 2B and 2C
5. Attach photos
6. Cut large messy circle die-cut in half, at approx. 4 5/8", and attach as shown
Tip: Attach a few of these with 3-D foam tape for added dimension.
7. Embellish with stickers and additional die-cuts

Project 2: Right Page



Assemble:

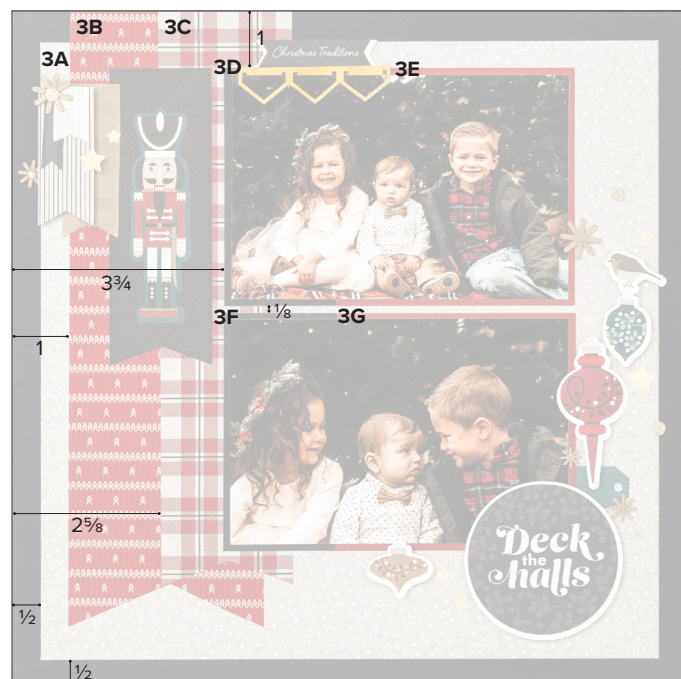
1. Use prepared dotted Scarlet patterned paper for base page
2. Attach 2D
3. Attach two black scalloped border die-cuts
4. Attach 2E and 2F
5. Attach remaining half of large messy circle die-cut, as shown
Tip: Align it with its corresponding half on the left page.
6. Attach photos
7. Embellish with stickers and remaining die-cuts, as shown
Tip: Attach a few of these with 3-D foam tape for added dimension.
8. Add journaling

Project 3: Left Page



Prepare (for both pages):

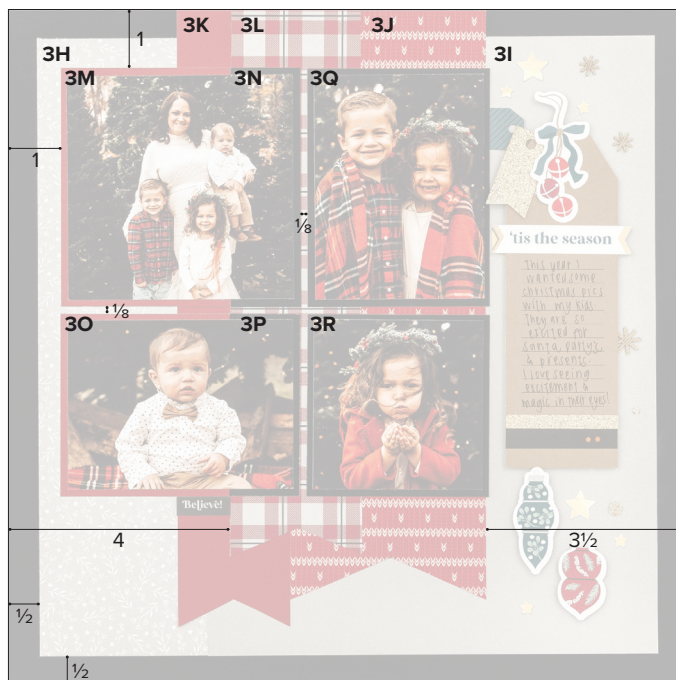
- (Optional) Sponge triple arrow die-cut with gilt gloss spray
Tips: Create a puddle of gloss spray on the all-purpose mat. Cut a wedge out of the round sponge and use it to apply the spray. Work in an area you don't mind getting messy. Gloss sprays stain.
Technique: Spray the all-purpose mat with the gloss spray at close range.
- (Optional) Dot black border on long Toffee tag die-cut with gilt gloss spray and embossing stylus, as shown, then set aside to dry
Tip: Clean the stylus with water when you're done.
Technique: Spray the all-purpose mat at close range. Dip the tip of the stylus tool into the spray and press it on the die-cut.



Assemble:

1. Use black cardstock for base page
2. Attach 3A
3. Dovetail and attach 3B and 3C
4. Attach 3D, 3E, 3F, and 3G
5. Attach photos
Tip: Do not use adhesive along the top left of the top photo so another piece can be tucked behind it in a later step.
6. Embellish with stickers and die-cuts
Tips: Attach a few of these with 3-D foam tape for added dimension. Tuck prepared arrow die-cut behind top photo, as shown.

Project 3: Right Page



Assemble:

1. Use black cardstock for base page
2. Attach 3H and 3I
3. Dovetail and attach 3J, 3K, and 3L
Tip: Do not use adhesive along the right top edge of 3J so another piece can be tucked behind it in a later step.
4. Attach 3M, 3N, 3O, 3P, 3Q, and 3R
5. Attach photos
6. Embellish with stickers and die-cuts
Tips: Attach a few of these with 3-D foam tape for added dimension. Tuck the Pine tag die-cut slightly behind 3J.