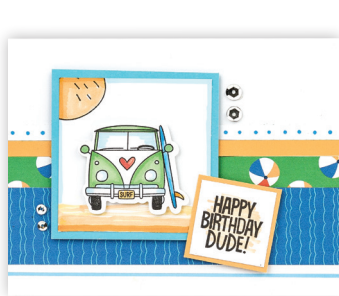


Featured Technique: Adding Detail with Markers



Materials Needed:

G1258 Beach Party Cardmaking Workshop Kit
 Z6521 Sundance Exclusive Inks™ Stamp Pad
 Z4189 Intense Black Exclusive Inks™ Stamp Pad
 Z2481 Coral TriBlend™ Marker
 Z2485 Light Green TriBlend™ Marker
 Z2491 True Blue TriBlend™ Marker
 Z2519 Gold Yellow TriBlend™ Marker
 Z3515 Black Journaling Pen (.01)
 Z1151 3-D Foam Tape
 Z2089 Glue Dots® Micro Dots

Z5038 Die-cutting & Embossing Machine
 Y1000 1" × 1" My Acrylix® Block
 Y1003 2" × 2" My Acrylix® Block
 Y1009 2" × 3½" My Acrylix® Block
 Paper Trimmer
 Scissors
 Adhesive
 Ruler
 Washi Tape

Exclusive Stamp + Thin Cuts:



Getting Started:

- Gather all materials needed.
- Trim all zip strips and set aside. The zip strip is the $\frac{1}{2}$ " accent paper along the top of each sheet of patterned paper.
- Check the cut orientation below each cutting guide image. This will show you how to cut the paper, keeping the patterns on your project pieces facing the right direction.
- Light grey pieces on your cutting guide are project pieces. White pieces are leftover paper.
- As you cut the paper, label and sort the pieces as indicated in the cutting guide, creating a stack for each project.
- If there is a fold line present in a cutting diagram, cut the paper first before folding it. In order to die-cut two shapes at once, place the die on top of the folded paper or stack two paper pieces before running the paper through your die-cutting machine. Paper pieces that can be stacked for die-cutting will be labeled, "stack."

Key:

✂ = first cut | * = use back of paper | P = Project

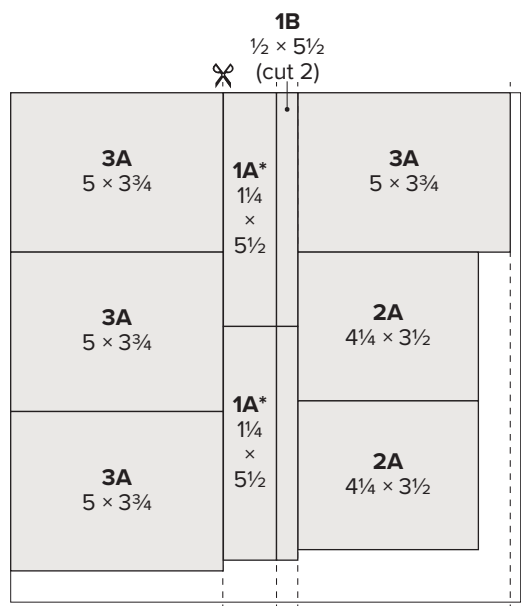
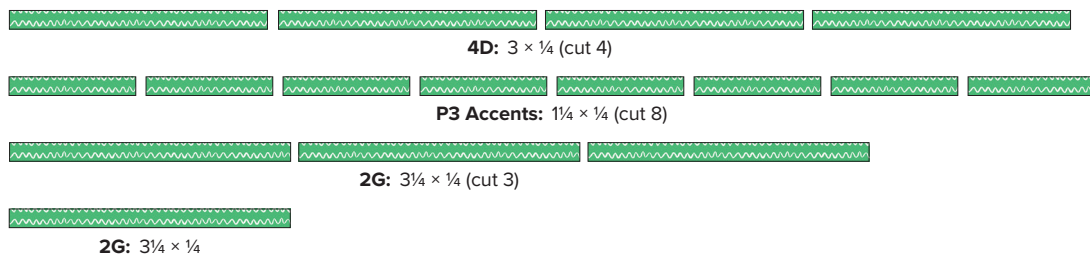
— — — = cut line

••••• = fold line

■ = suggested Thin Cuts arrangement

Cutting Diagrams:

zip strips



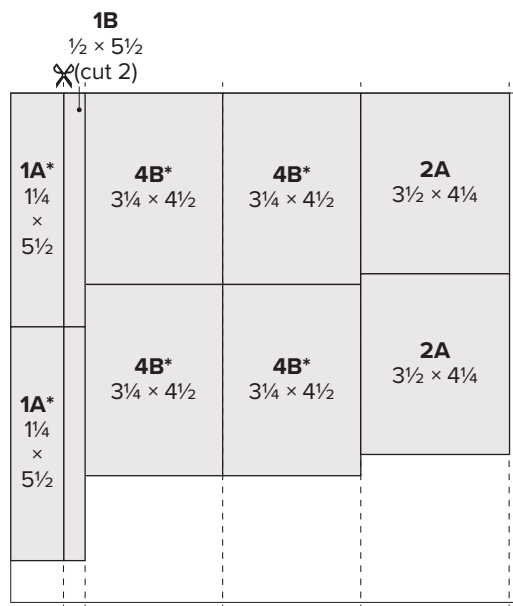
cut orientation



front



*back



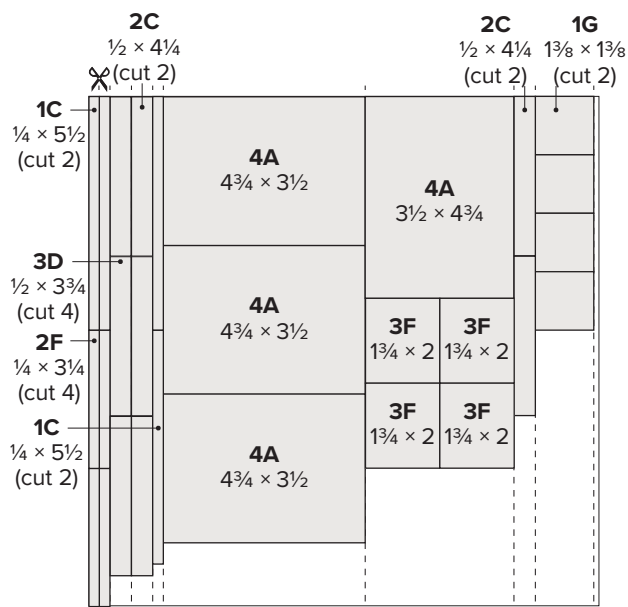
cut orientation



front



*back

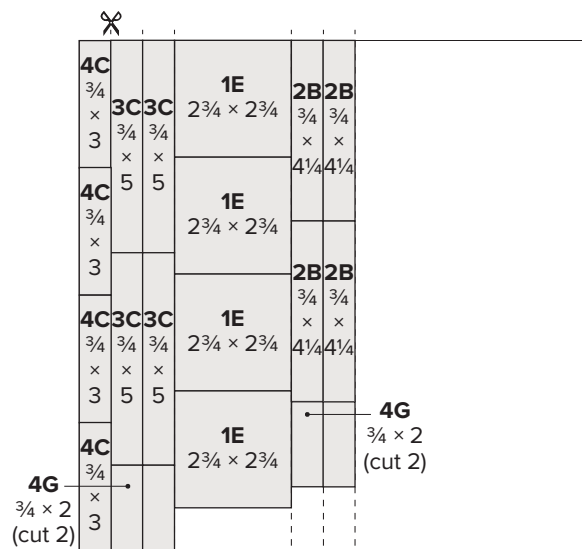


Sundance cardstock



light

*dark

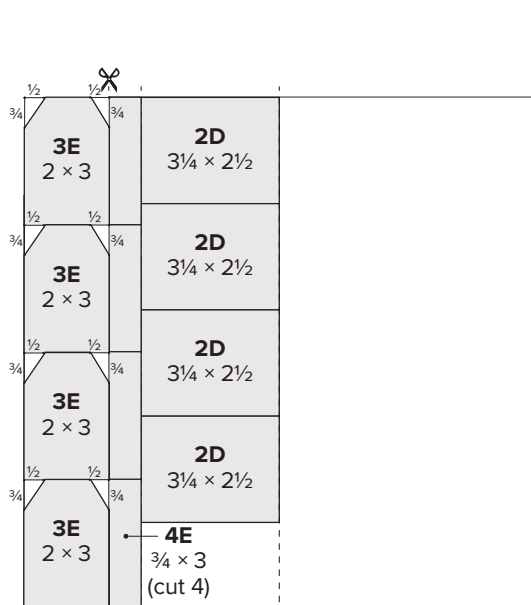


Capri cardstock



light

*dark

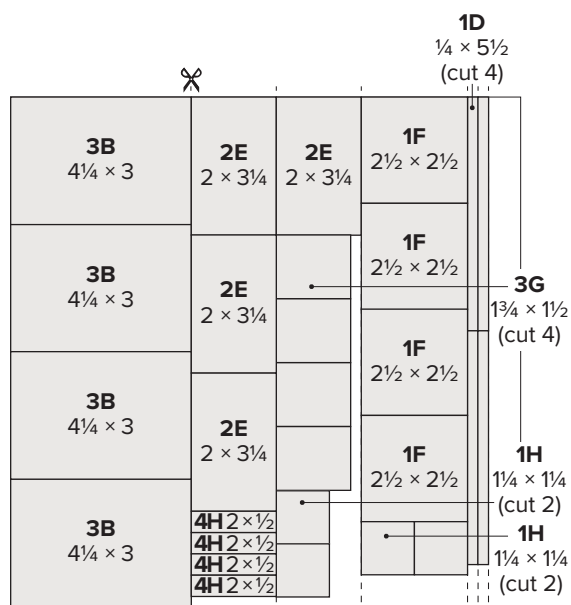


Candy Apple cardstock



light

*dark



White Daisy cardstock



✂

4F 3¼ × 2	3½ × 8½ P1 P4	3½ × 8½ P1 P4	
4F 3¼ × 2	P3 P2	P3 P2	
4F 3¼ × 2	P1 P4	P1 P4	
4F 3¼ × 2	P3 P2	P3 P2	
	3½ × 3½ P2 P2 stack	3½ × 3½ P2 P2 stack	

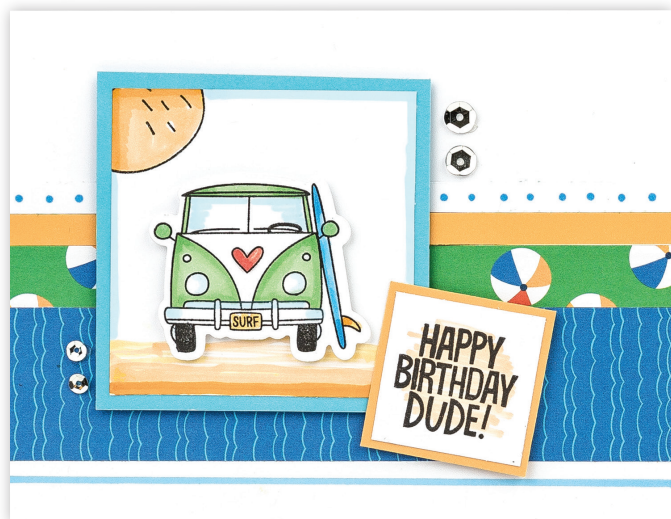
White Daisy cardstock



Tip: See the Getting Started section on page two for additional information on how to make two die-cuts at once.

Project 1: Make 4

Prepare (4 each):



1D:

Paper: White Daisy

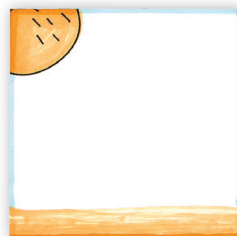
Tip: Draw dots with middle True Blue blend marker.

1F:

Paper: White Daisy

Ink: Intense Black

Tips: Use the coconut drink stamp to create the sun in the upper corner. Add colour to the stamped image and along the bottom of 1F with the lightest and middle Gold Yellow blend markers. Draw a border with the lightest True Blue blend marker and a ruler.



1H:

Paper: White Daisy

Ink: Intense Black

Tip: First colour the center with the lightest Gold Yellow blend marker, then stamp the sentiment with Intense Black ink.

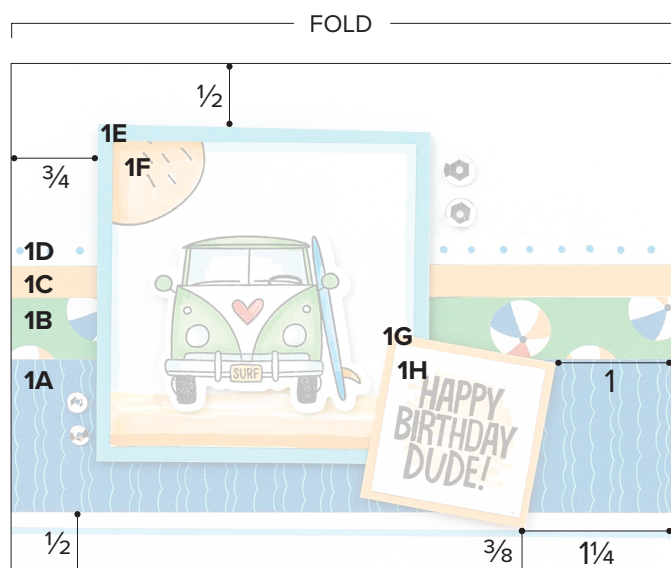


P1 Accent:

Paper: White Daisy

Ink: Intense Black

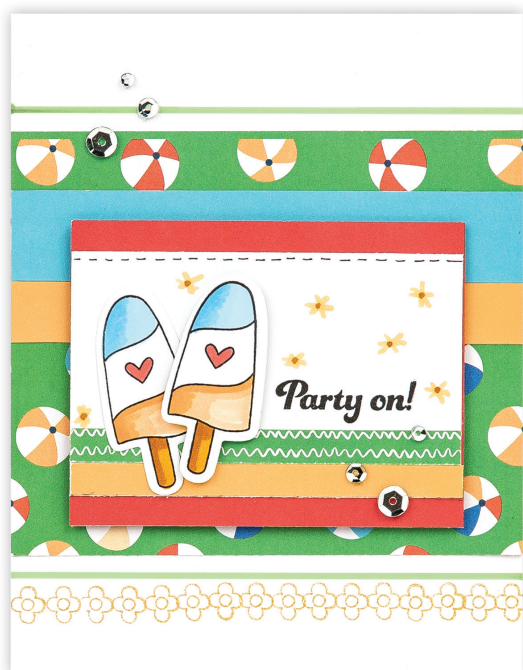
Tip: Colour with the lightest and middle Light Green, the lightest and middle Gold Yellow, the middle and darkest Coral, and the lightest, middle, and darkest True Blue blend markers.



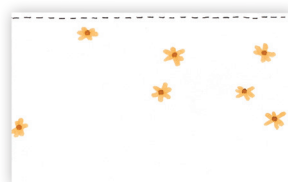
Assemble:

1. Prepare pieces shown above
2. Attach 1A, 1B, 1C, and prepared 1D
3. Attach prepared 1F to 1E, as shown
4. Attach 1E with 3-D foam tape
5. Attach prepared van accent with 3-D foam tape
6. Attach prepared 1H to 1G, as shown
7. Attach 1G with 3-D foam tape
Tip: Do not use adhesive along the left edge.
8. Draw line on card base with middle True Blue blend marker and ruler, as shown
9. Embellish with sequins
Tip: Attach with glue dots.

Project 2: Make 4



Prepare (4 each):



2E:

Paper: White Daisy

Tips: Draw a stitch line along the top with the black journaling pen. Draw flowers with the lightest and middle Gold Yellow blend markers, as shown.

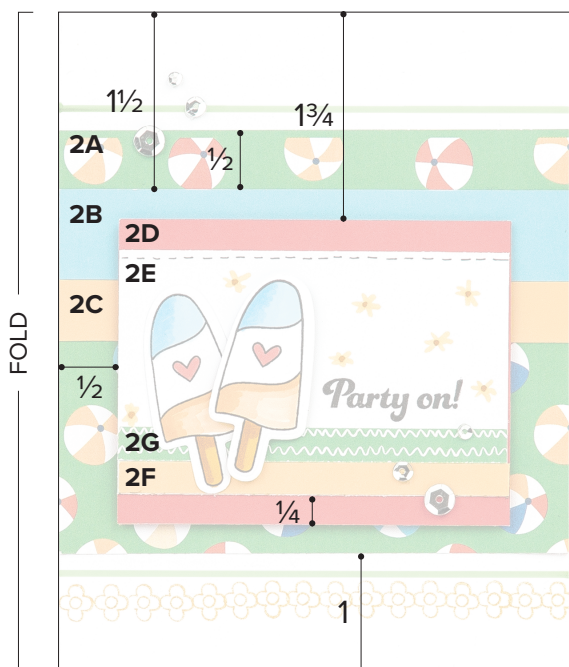


P2 Accents

Paper: White Daisy

Ink: Intense Black

Tip: Colour with the lightest, middle, and darkest Gold Yellow, lightest and middle True Blue, and darkest Coral blend markers. Make 2 per card.



Assemble:

1. Prepare pieces shown above
2. Attach 2A
3. Attach 2B and 2C
4. Draw lines on card base with lightest Light Green blend marker and ruler
Tip: Draw the lines approx. 1/8" above and below 2A.
5. Stamp small flower on card base with Sundance ink, as shown
6. Attach 2F and 2G to prepared 2E
7. Stamp "Party on!" on prepared 2E with Intense Black ink, as shown
8. Attach prepared 2E to 2D
9. Attach prepared popsicle accents, as shown
Tip: Attach one of these with 3-D foam tape for added dimension.
10. Attach 2D with 3-D foam tape
11. Embellish with sequins
Tip: Attach with glue dots.

Project 3: Make 4



Prepare (4 each):



3B:

Paper: White Daisy

Tips: Draw a border with the lightest Light Green blend marker and a ruler. Draw a second border with a journaling pen.



3E:

Paper: light Candy Apple

Tip: Draw a border with a journaling pen.



3G:

Paper: White Daisy

Inks: Intense Black, Sundance
Tips: First, draw a border with the lightest Gold Yellow blend marker and a ruler. Next, stamp the lattice as shown, 1/4" from the bottom. Then, add the background colour with the lightest Gold Yellow blend marker, and lastly, stamp the sentiment with Intense Black ink.

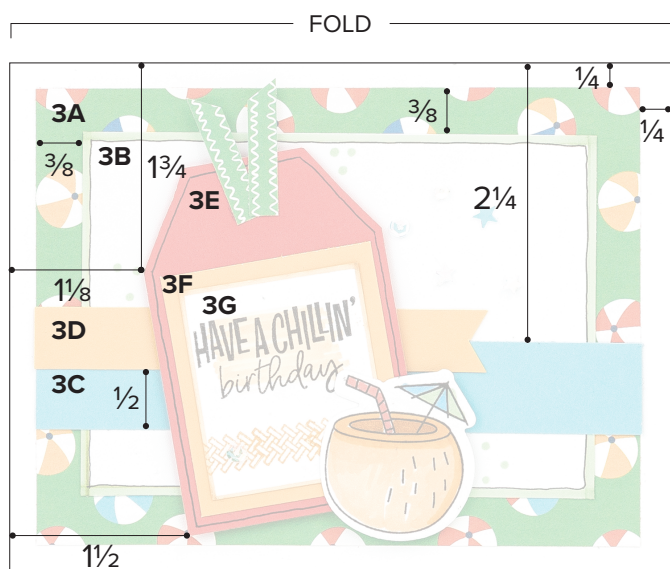


P3 Accent:

Paper: White Daisy

Ink: Intense Black

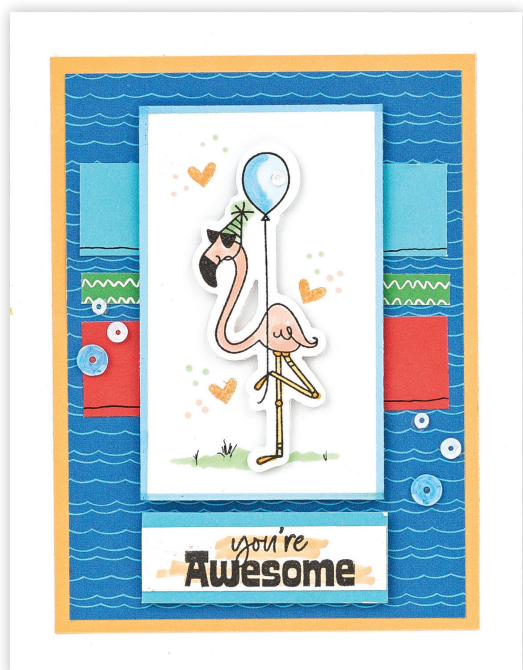
Tip: Colour with the lightest, middle, and darkest Gold Yellow, the darkest Coral, the middle True Blue, and the lightest Light Green blend markers.



Assemble:

1. Prepare pieces shown above
2. Attach 3A
3. Attach prepared 3B
4. Attach 3C
5. Dovetail and attach 3D
6. Attach prepared 3G to 3F, as shown
7. Attach 3F to prepared 3E, as shown
8. Attach 3E with 3-D foam tape
9. Angle cut two zip strip accents and attach to 3E, as shown
Tip: Attach with glue dots.
10. Attach prepared coconut drink accent with 3-D foam tape
Tip: Do not use adhesive along the left half.
11. Draw polka-dots on 3B with lightest Light Green blend marker, as shown
12. Embellish with sequins
Tip: Attach with glue dots.

Project 4: Make 4



Prepare (4 each):



4C:

Paper: light Capri
Tip: Draw a line with a journaling pen.



4E:

Paper: light Candy Apple
Tip: Draw a line with a journaling pen.



4F:

Paper: White Daisy
Ink: Sundance
Tips: First, draw a border with the middle True Blue blend marker and a ruler. Lay the flamingo P4 Accent on 4F for placement, then stamp the small heart with Sundance ink. Remove the flamingo accent and draw grass with the lightest Light Green blend marker. Add details to the grass with a journaling pen. Draw polka-dots with the lightest Light Green and lightest Coral blend markers.



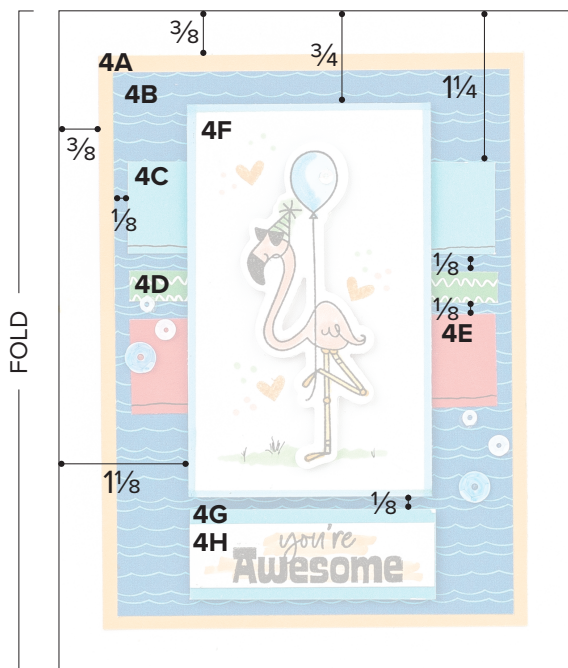
4H:

Paper: White Daisy
Ink: Intense Black
Tip: First, add the background colour with the lightest Gold Yellow blend marker, then stamp the sentiment with Intense Black ink.



P4 Accent:

Paper: White Daisy
Ink: Intense Black
Tip: Colour with the lightest and middle Coral, lightest and middle True Blue, lightest and middle Light Green, and lightest and middle Gold Yellow blend markers.



Assemble:

1. Prepare pieces shown above
2. Attach 4A and 4B
3. Attach prepared 4C, 4D, and prepared 4E
4. Attach prepared 4F with 3-D foam tape
5. Attach prepared flamingo accent with 3-D foam tape, as shown
6. Attach prepared 4H to 4G
7. Attach 4G with 3-D foam tape
8. Embellish with sequins
Tips: Colour two white sequins with the middle True Blue blend marker. Attach with glue dots.