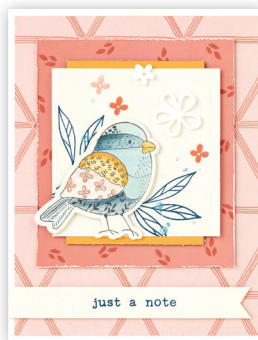


Candid Moments | 16 cards, 4 each of 4 designs

Featured Technique: Adding Colour with Watercolour Paints



Materials Needed:

G1244 Candid Moments Cardmaking Workshop Kit
Z6534 Papaya Exclusive Inks™ Stamp Pad
Z2848 Sapphire Exclusive Inks™ Stamp Pad
Z4189 Intense Black Exclusive Inks™ Stamp Pad
Z3132 Watercolour Paints
Z3224 Small Round Waterbrush
Z2060 Thin 3-D Foam Tape
Z2089 Glue Dots® Micro Dots
Y1000 1" × 1" My Acrylix® Block

Y1016 1" × 1½" My Acrylix® Block
Y1003 2" × 2" My Acrylix® Block
Y1006 3" × 3" My Acrylix® Block
Die-cutting & Embossing Machine
Paper Trimmer
Scissors
Adhesive
Ruler

Exclusive Stamp + Thin Cuts:



Getting Started:

- Gather all materials needed.
- Trim all zip strips and set aside. The zip strip is the $\frac{1}{2}$ " accent paper along the top of each sheet of patterned paper.
- Check the cut orientation below each cutting guide image. This will show you how to cut the paper, keeping the patterns on your project pieces facing the right direction.
- Light grey pieces on your cutting guide are project pieces. White pieces are leftover paper.
- As you cut the paper, label and sort the pieces as indicated in the cutting guide, creating a stack for each project.
- If there is a fold line present in a cutting diagram, cut the paper first before folding it. In order to die-cut two shapes at once, place the die on top of the folded paper or stack two paper pieces before running the paper through your die-cutting machine. Paper pieces that can be stacked for die-cutting will be labeled, "stack."

Key:

✂ = first cut | * = use back of paper | P = Project

— — — = cut line

..... = fold line

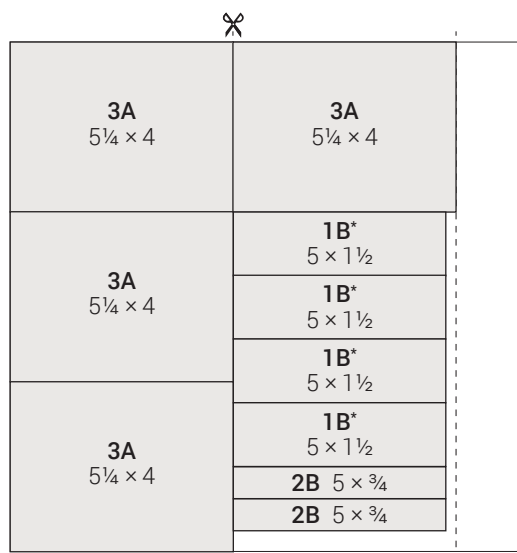
■ = suggested Thin Cuts arrangement

Cutting Diagrams:

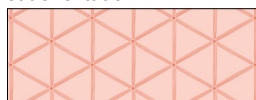
zip strips



4E: $5 \times \frac{1}{2}$ (cut 4)



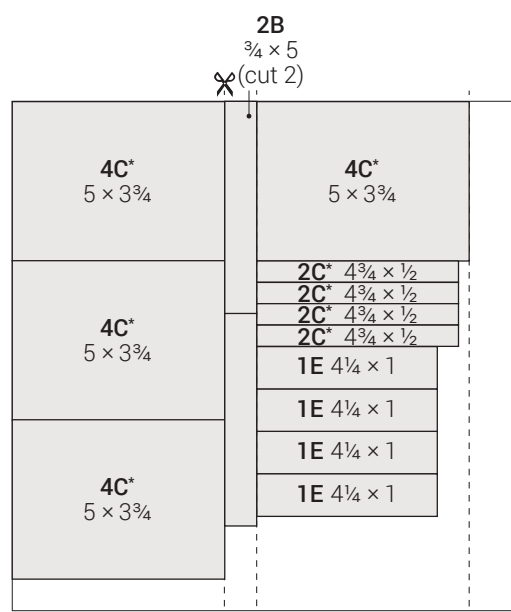
cut orientation



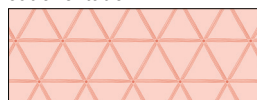
front



*back



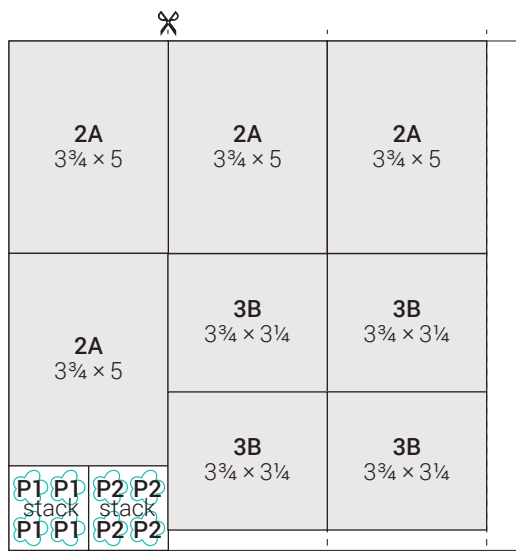
cut orientation



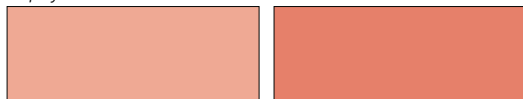
front



*back



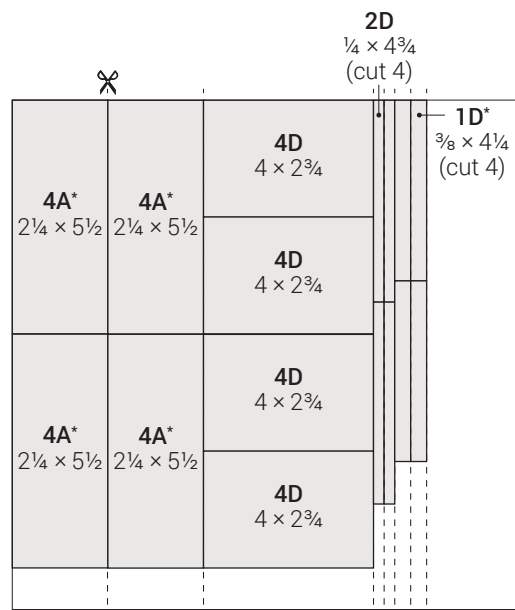
Papaya cardstock



light

*dark

Tip: See the Getting Started section on page two for additional information on how to make two die-cuts at once.

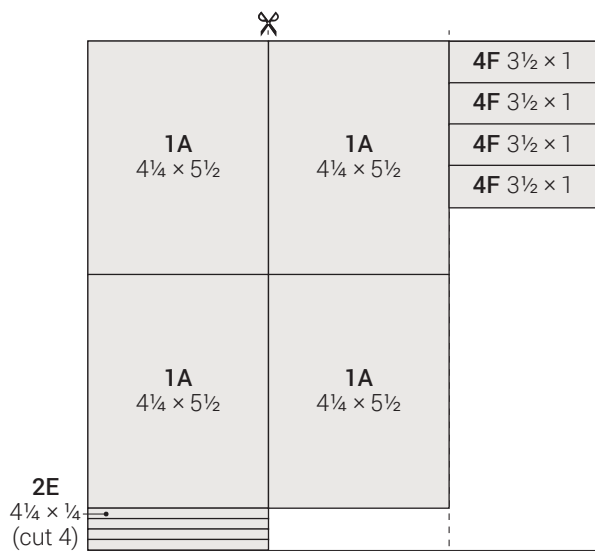


Sapphire cardstock

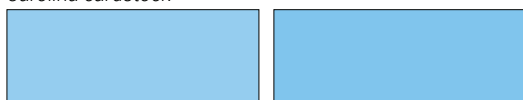


dark

*light

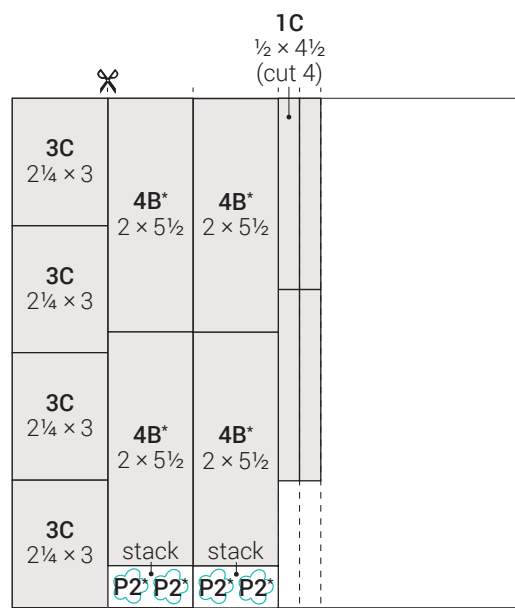


Carolina cardstock

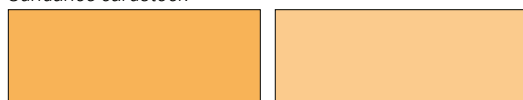


light

*dark



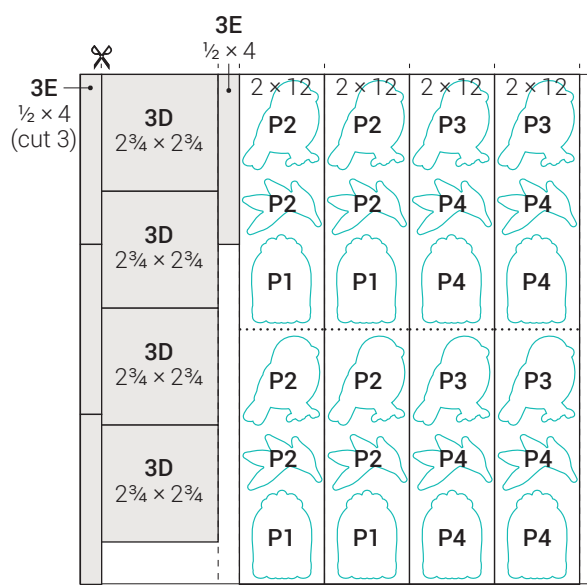
Sundance cardstock



dark

*light

Tip: See the Getting Started section on page two for additional information on how to make two die-cuts at once.



French Vanilla cardstock

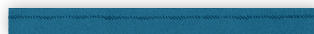


Tip: See the Getting Started section on page two for additional information on how to make two die-cuts at once.

Project 1: Make 4



Prepare (4 each):



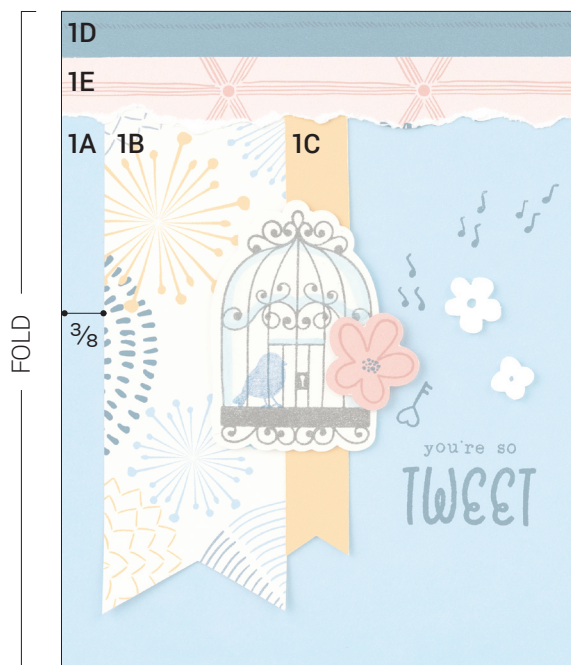
1D:
Paper: light Sapphire
Ink: Sapphire



P1 Accent:
Paper: French Vanilla
Ink: Intense Black, Sapphire
Tips: Stamp the bird using the second-generation stamping technique. Once the ink is dry, add colour to the birdcage with watercolour paint. (Carolina—mix 21, 22, and 20.)
Technique: Ink the stamp in Sapphire and stamp it on a scratch piece of paper. Then, without re-inking, stamp on the accent.



P1 Accent:
Paper: light Papaya
Ink: Papaya, Sapphire



Assemble:

1. Prepare pieces shown above
2. Attach 1A
3. Dovetail 1B and 1C, then attach
4. Attach prepared 1D
5. Tear approx. $\frac{1}{2}$ " off one long edge of 1E, and attach
6. Attach prepared birdcage and flower accents with thin 3-D foam tape, as shown
7. Stamp music notes, key, and "you're so TWEET" on 1A with Sapphire ink, as shown
8. Embellish with acrylic flowers
Tip: Attach with glue dots.

Project 2: Make 4



Prepare (4 each):



P2 Accent:

Paper: French Vanilla

Ink: Intense Black

Tip: Add colour with watercolour paints once the ink is dry. (Peach—mix 1, 5, and 12, Papaya—mix 11 and 10, Sundance—mix 4, 5, 6, and 8)



P2 Accent:

Paper: French Vanilla

Ink: Sapphire



P2 Accent:

Paper: light Sundance

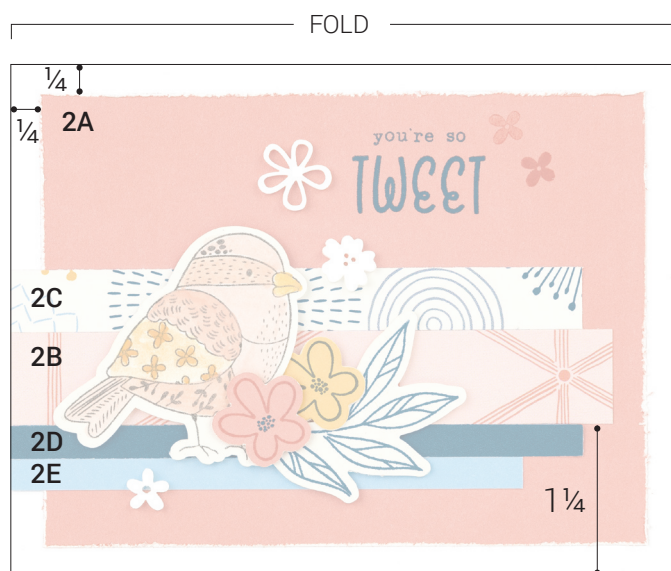
Ink: Sapphire



P2 Accent:

Paper: light Papaya

Ink: Papaya, Sapphire



Assemble:

1. Prepare pieces shown above
2. Attach 2A
Tip: Distress the edges of 2A with scissors before attaching.
Technique: Run the blade of your scissors along the edges of the paper until the desired effect is achieved.
3. Attach 2B, 2C, 2D, and 2E
4. Stamp "you're so TWEET" on 2A with Sapphire ink, as shown
5. Stamp small flowers on 2A with Papaya ink, as shown
Tip: Use the second-generation stamping technique for the lighter image.
Technique: Ink the stamp in Papaya and stamp it on 2A. Then, without re-inking, stamp on 2A again.
6. Attach prepared bird, leaf, and flower accents with thin 3-D foam tape
7. Embellish with acrylic flowers
Tip: Attach with glue dots.

Project 3: Make 4



Prepare (4 each):



3B:

Paper: light Papaya

Ink: Papaya

Tip: Distress the edges of 3B with scissors.

Technique: Run the blade of your scissors along the edges of the paper until the desired effect is achieved.



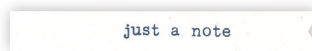
3D:

Paper: French Vanilla

Inks: Papaya, Sapphire

Tips: Add watercolour splatters before stamping the leaves. Use the second-generation stamping technique for the lighter Papaya flower.

Techniques: Pick up paint with the tip of a waterbrush and gently tap the barrel of the brush on your index finger, above where you want the splatters to land (Carolina—mix 21, 22, and 20). Ink the small flower stamp in Papaya and stamp it on 3D. Then, without re-inking, stamp on 3D again for a second-generation image.



3E:

Paper: French Vanilla

Ink: Sapphire

Tip: Dovetail.

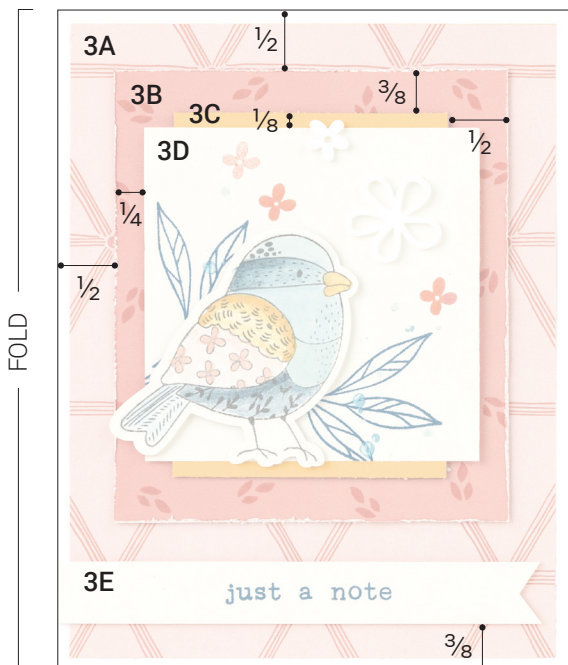


P3 Accent:

Paper: French Vanilla

Ink: Intense Black

Tip: Add colour with watercolour paints once the ink is dry. (Carolina—mix 21, 22, and 20, Sapphire—mix 19, 23, 25, and 36, Sundance—mix 4, 5, 6, and 8, Peach—mix 1, 5, and 12, Papaya—mix 11 and 10)



Assemble:

1. Prepare pieces shown above
2. Attach 3A
3. Attach prepared 3B with thin 3-D foam tape
4. Attach 3C with thin 3-D foam tape
5. Attach prepared 3D
6. Attach prepared 3E with thin 3-D foam tape
7. Attach prepared bird accent
8. Embellish with acrylic flowers

Tip: Attach with glue dots.

Project 4: Make 4



Prepare (4 each):

Hey there.
CHICKADEE!

4F:

Paper: light Carolina
Ink: Sapphire



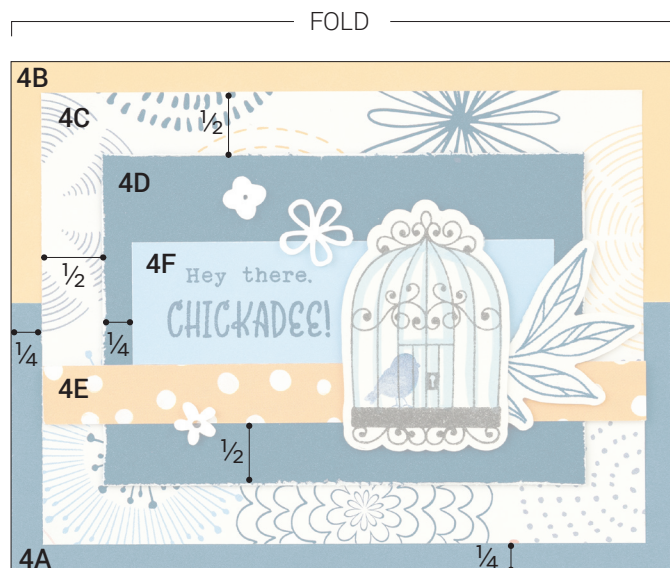
P4 Accent:

Paper: French Vanilla
Inks: Intense Black, Sapphire
Tips: Stamp the bird using the second-generation stamping technique. Once the ink is dry, add colour to the birdcage with watercolour paint. (Carolina—mix 21, 22, and 20)
Technique: Ink the stamp in Sapphire and stamp it on a scratch piece of paper. Then, without re-inking, stamp on the accent.



P4 Accent:

Paper: French Vanilla
Ink: Sapphire



Assemble:

1. Prepare pieces shown above
2. Attach 4A and 4B
3. Attach 4C
4. Attach 4D with thin 3-D foam tape
Tip: Distress the edges of 4D with scissors before attaching.
Technique: Run the blade of your scissors along the edge of the paper until the desired effect is achieved.
5. Attach 4E with thin 3-D foam tape
Tip: Only use foam tape on the ends.
6. Attach prepared 4F
7. Attach prepared birdcage and leaf accents with thin 3-D foam tape
8. Embellish with acrylic flowers
Tip: Attach with glue dots.