

# Wanderland | 16 cards, 4 each of 4 designs

Featured Technique: Embellishing with White Gel Pens



## Materials Needed:

G1242 Wonderland Cardmaking Workshop Kit  
Z6529 Rosemary Exclusive Inks™ Stamp Pad  
Z6514 Wisteria Exclusive Inks™ Stamp Pad  
Z2474 Ice Grey TriBlend™ Marker  
Z1513 White Gel Pens  
Z2060 Thin 3-D Foam Tape  
Y1000 1" × 1" My Acrylix® Block  
Y1002 1" × 3½" My Acrylix® Block  
Y1003 2" × 2" My Acrylix® Block

Y1006 3" × 3" My Acrylix® Block  
Die-cutting & Embossing Machine  
Paper Trimmer  
Scissors  
Ruler  
Adhesive

## Exclusive Stamp + Thin Cuts:



## Getting Started:

- Gather all materials needed.
- Trim all zip strips and set aside. The zip strip is the  $\frac{1}{2}$ " accent paper along the top of each sheet of patterned paper.
- Check the cut orientation below each cutting guide image. This will show you how to cut the paper, keeping the patterns on your project pieces facing the right direction.
- Light grey pieces on your cutting guide are project pieces. White pieces are leftover paper.
- As you cut the paper, label and sort the pieces as indicated in the cutting guide, creating a stack for each project.
- If there is a fold line present in a cutting diagram, cut the paper first before folding it. In order to die-cut two shapes at once, place the die on top of the folded paper or stack two paper pieces before running the paper through your die-cutting machine. Paper pieces that can be stacked for die-cutting will be labeled, "stack."

## Key:

✂ = first cut | \* = use back of paper | P = Project

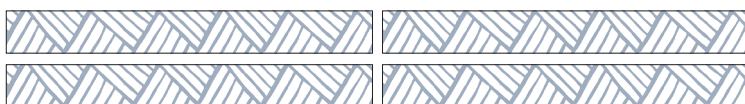
— — — = cut line

..... = fold line

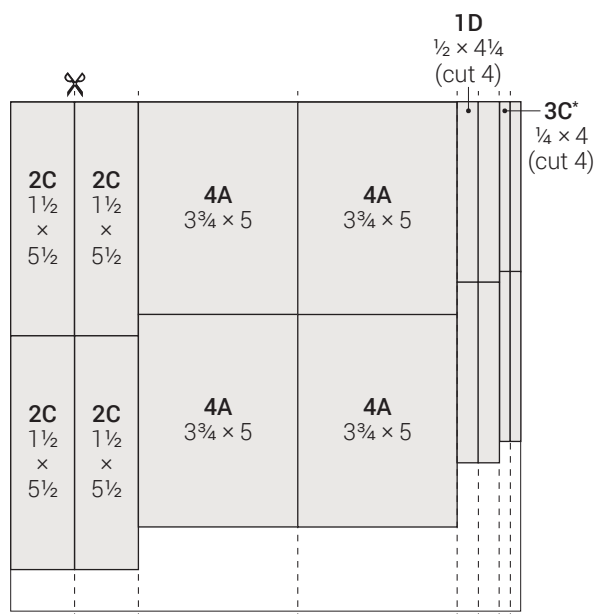
■ = suggested stamp arrangement

## Cutting Diagrams:

zip strips



1F:  $4\frac{1}{4} \times \frac{1}{2}$  (cut 4)



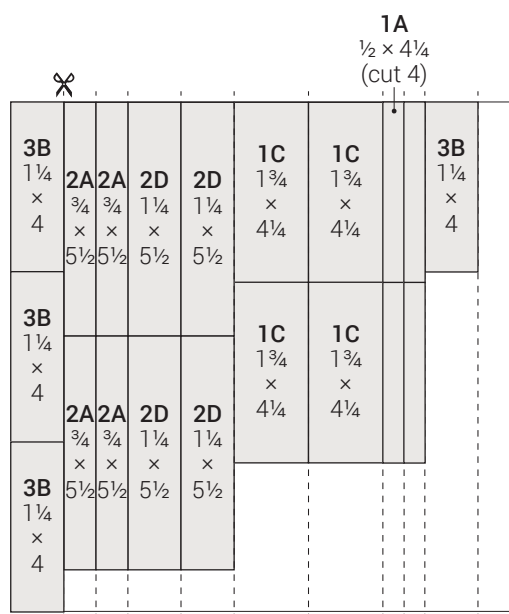
cut orientation



front



\*back



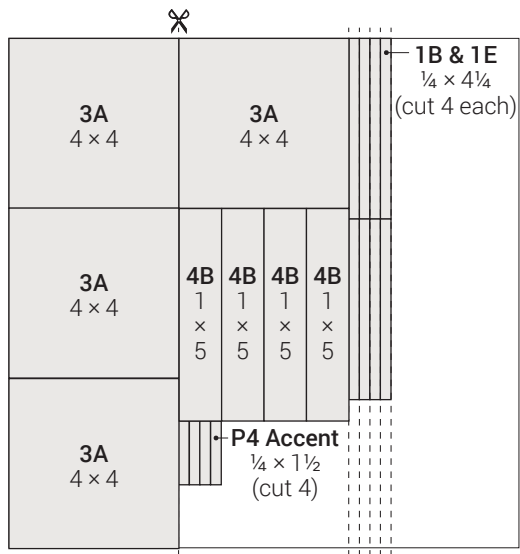
cut orientation



front



\*back

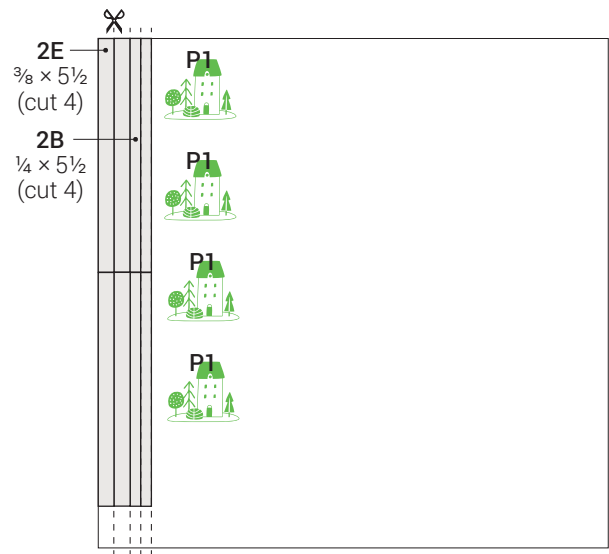


Wisteria cardstock

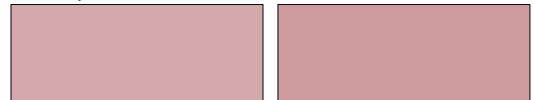


light

\*dark

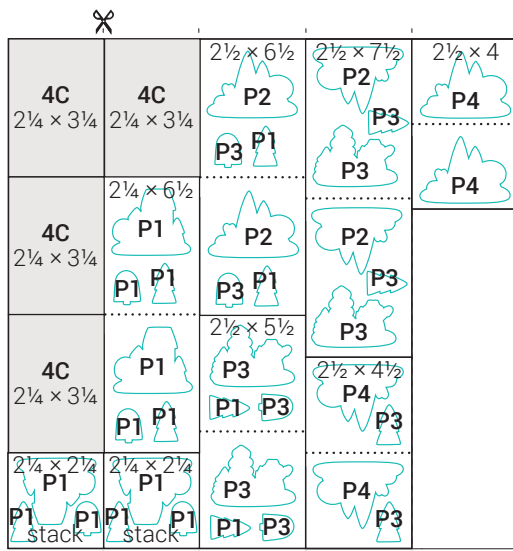


Mulberry cardstock



light

\*dark



White Daisy cardstock



Tip: See the Getting Started section on page two for additional information on how to make two die-cuts at once.

## Project 1: Make 4



## Prepare (4 each):



### P1 Accent:

Paper: light Mulberry, White Daisy  
Ink: Rosemary  
Tips: Hand trim the light Mulberry house and attach it on top of the White Daisy house. Add colour to the snow with the lightest Ice Grey blend marker.



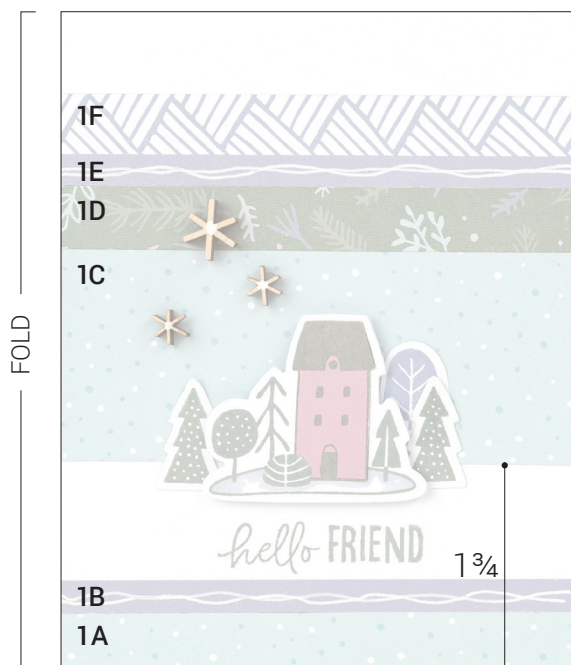
### P1 Accent:

Paper: White Daisy  
Ink: Wisteria



### P1 Accents:

Paper: White Daisy  
Ink: Rosemary



## Assemble:

1. Prepare pieces shown above
2. Attach 1A and 1B
3. Attach 1C, 1D, 1E, and 1F
4. Draw lines on 1B and 1E with .10 white gel pen, as shown
5. Attach prepared house and tree accents, as shown  
*Tip: Attach the house accent with thin 3-D foam tape for added dimension.*
6. Stamp "hello FRIEND" with Rosemary ink, as shown
7. Draw dots on wood stars with .10 white gel pen, as shown
8. Embellish with prepared wood stars  
*Tip: Attach with glue dots.*

## Project 2: Make 4

## Prepare (4):



### P2 Accent:

Paper: White Daisy

Ink: Rosemary

Tip: Add colour with the lightest and middle Ice Grey blend markers.



## Assemble:

1. Prepare piece shown above
2. Attach 2A and 2B
3. Stamp BEST WISHES with Rosemary ink, as shown
4. Tear approx. ¼" from one long edge of 2C, and attach
5. Stamp pine tree on card base and 2C with Rosemary ink, as shown  
*Tip: Use the second-generation stamping technique for the lighter images.*  
*Technique: Ink the stamp in Rosemary and stamp it on the card. Then, without re-inking, stamp on the card again for a second-generation image.*
6. Tear approx. ¼" from one long edge of 2D, and attach
7. Attach 2E, on top of 2D
8. Draw lines and dots on 2B and 2E with .10 white gel pen, as shown
9. Attach prepared deer scene accent, as shown
10. Stamp small snowflakes on card base with Rosemary ink, as shown  
*Tip: Use the second-generation stamping technique.*  
*Technique: Ink the stamp in Rosemary and stamp it on a scratch piece of paper. Then, without re-inking, stamp on the card.*
11. Add colour to wood stars with .10 white gel pen, as shown
12. Embellish with prepared wood stars  
*Tip: Attach with glue dots.*



## Project 3: Make 4

## Prepare (4 each):



### 3A:

Paper: light Wisteria

Ink: Wisteria

Tip: Add dots with .10 white gel pen



### P3 Accent:

Paper: White Daisy

Ink: Rosemary

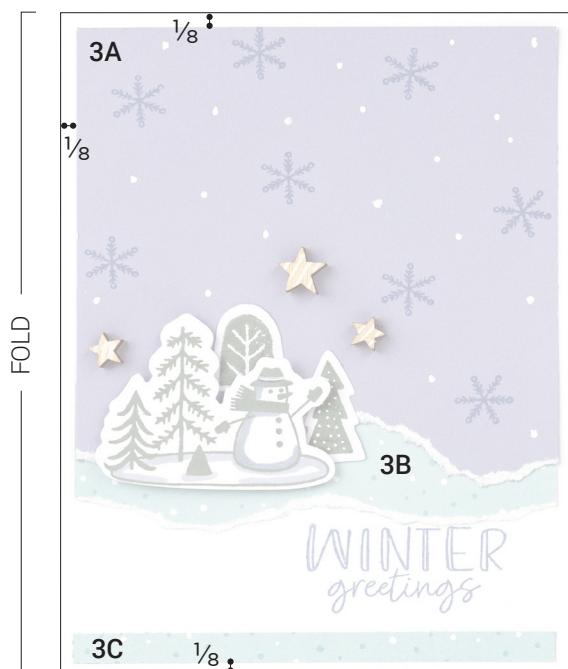
Tip: Add colour with the lightest and middle Ice Grey blend markers.



### P3 Accents:

Paper: White Daisy

Ink: Rosemary



## Assemble:

1. Prepare pieces shown above
2. Tear approx.  $\frac{1}{4}$ "– $\frac{1}{2}$ " from one edge of 3A, as shown
3. Tear approx.  $\frac{1}{4}$ " from one long edge of 3B, as shown
4. Attach 3B to back of 3A, as shown
5. Attach prepared 3A and 3B
6. Attach 3C
7. Stamp "WINTER greetings" on card base with Wisteria ink, as shown
8. Attach prepared snowman scene and tree accents, as shown  
*Tip: Attach snowman scene accent with thin 3-D foam tape for added dimension.*
9. Draw lines on wood stars with .10 white gel pen, as shown
10. Embellish with prepared wood stars  
*Tip: Attach with glue dots.*

## Project 4: Make 4



## Prepare (4 each):

### 4C:

Paper: White Daisy

Ink: Rosemary, Wisteria

Tips: Trim the corners,  $\frac{1}{2}$ " from the top and left and right edges. Stamp "swash" over "WARM HUGS" by mounting the "WARM HUGS" stamp on the block backward (smooth side up) and using the second-generation stamping technique. Stamp a few snowflakes and pine trees also using the second-generation stamping technique.

Technique: Ink the back of the stamp in Wisteria and stamp it on a scratch piece of paper. Then, without re-inking, stamp over "WARM HUGS."



### P4 Accent:

Paper: White Daisy

Ink: Rosemary

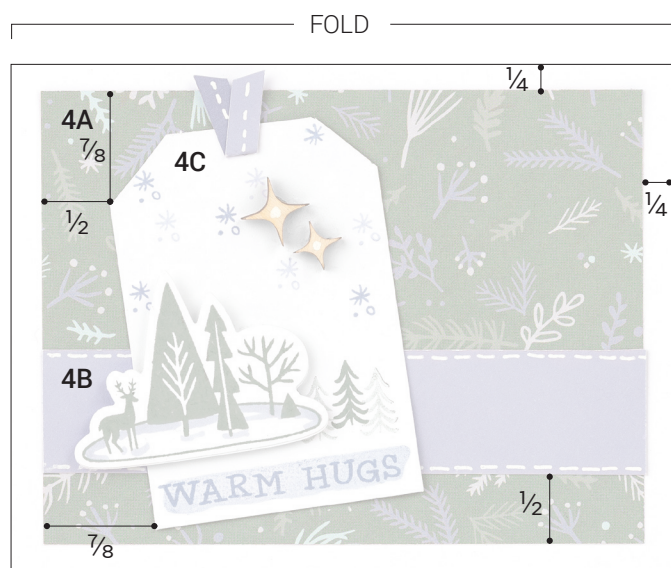
Tip: Add colour with the lightest and middle Ice Grey blend markers.



### P4 Accent:

Paper: Wisteria

Tips: Fold the strip of paper at an angle and draw a stitch line down the center, as shown, with the .10 white gel pen. Hand trim ends at an angle.



## Assemble:

1. Prepare pieces shown above
2. Attach 4A and 4B
3. Draw stitch lines on 4B with .10 white gel pen, as shown
4. Attach 4C
5. Attach prepared deer scene accent with thin 3-D foam tape, as shown
6. Attach prepared Wisteria cardstock ribbon accent to 4C, as shown
7. Draw dots on wood stars with .10 white gel pen, as shown
8. Embellish with prepared wood stars  
*Tip: Attach with glue dots.*