

# Stitched Together | 16 cards, 4 each of 4 designs

Featured Technique: Using Watercolour Pencils



## Additional Materials Needed:

Z6517 Lemonade Exclusive Inks™  
 Z2848 Sapphire Exclusive Inks™ Stamp Pad  
 Z2896 Smoothie Exclusive Inks™ Stamp Pad  
 Z3630 Watercolour Pencils  
 Z1151 3-D Foam Tape  
 Z341 Glue Dots® Mini Dots  
 1772 Glue Dots® Ultra-thin Dots  
 Y1000 1" x 1" My Acrylix® Block  
 Y1003 2" x 2" My Acrylix® Block  
 Y1015 5" x 6" My Acrylix® Block  
 Sewing Needle with Large Eye

## Exclusive Stamp + Thin Cuts:



## Getting Started:

- Gather any additional materials needed.
- Trim all zip strips and set aside. The zip strip is the  $\frac{1}{2}$ " accent paper along the top of each sheet of patterned paper.
- Check the cut orientation below each cutting guide image. This will show you how to cut the paper, keeping the patterns on your project pieces facing the right direction.
- Light grey pieces on your cutting guide are project pieces. White pieces are leftover paper.
- As you cut the paper, sort the pieces as indicated in the cutting guide, creating a stack for each project.

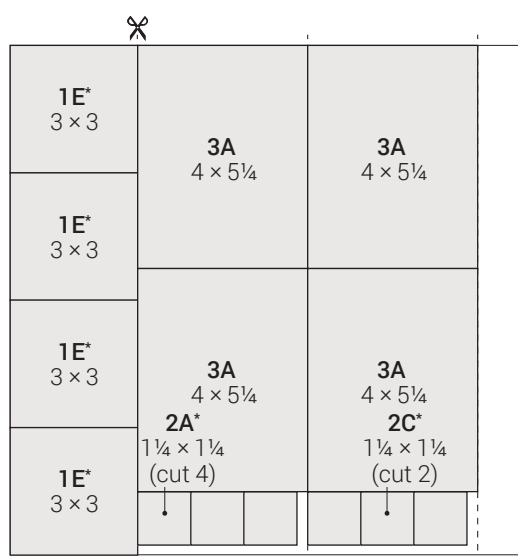
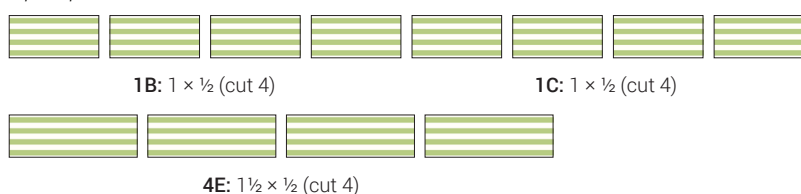
## Key:

✂ = first cut | \* = use back of paper

■ = suggested Thin Cuts arrangement

## Cutting Diagrams:

zip strips



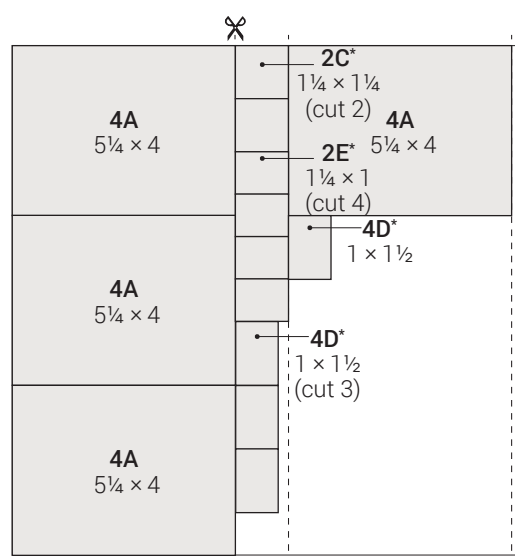
cut orientation



front



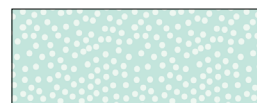
\*back



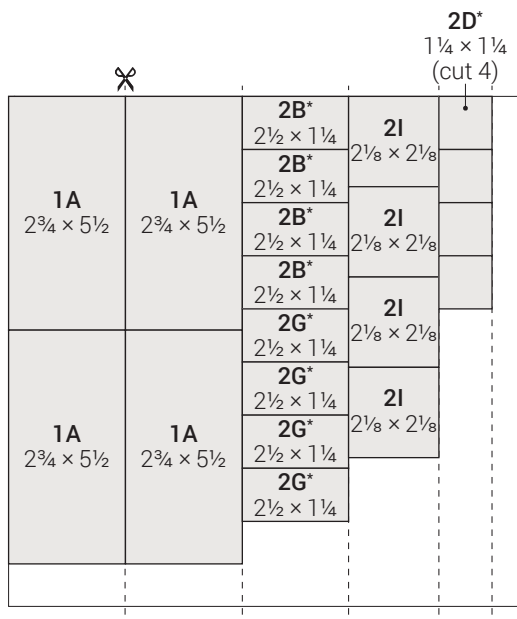
cut orientation



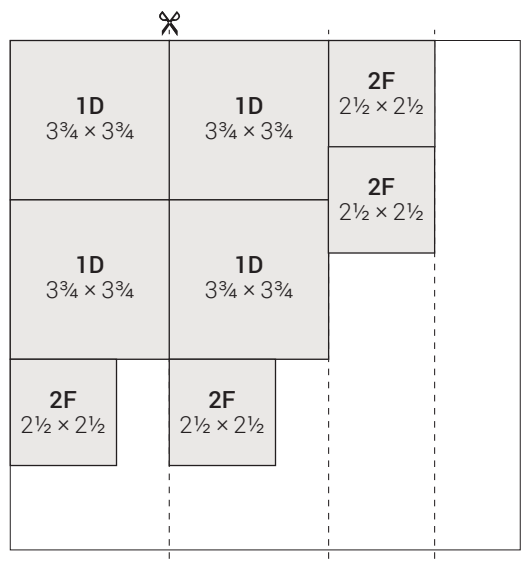
front



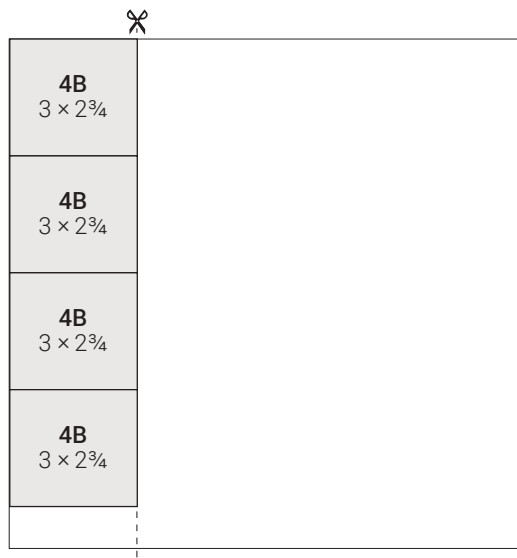
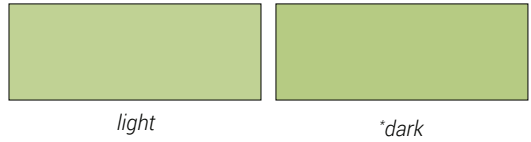
\*back



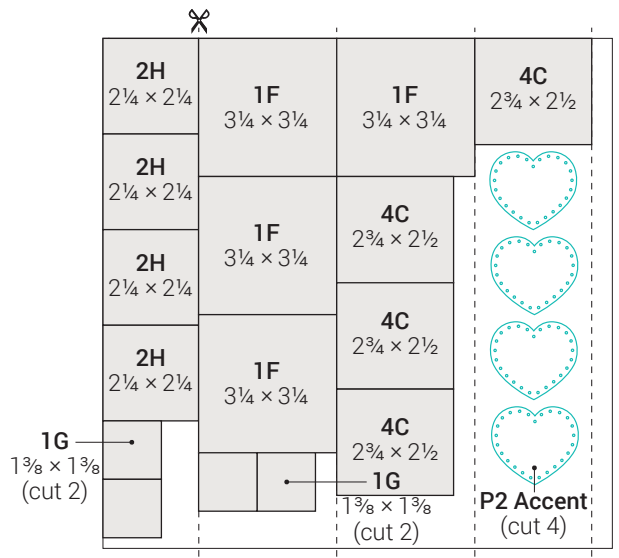
Lemonade cardstock



Sweet Leaf cardstock



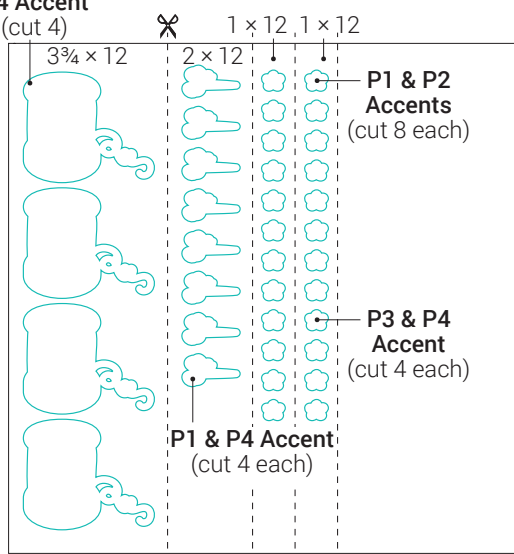
Sweet Leaf cardstock



French Vanilla cardstock



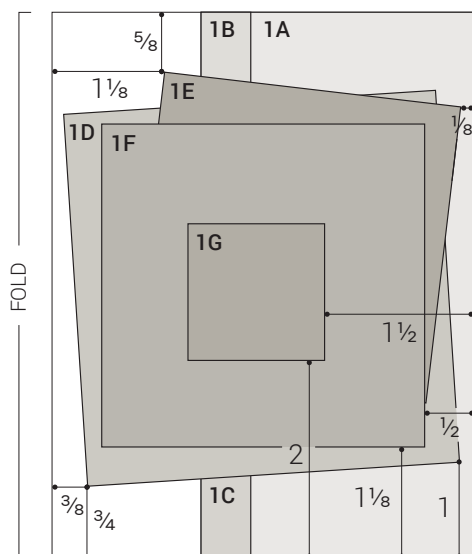
**P4 Accent**  
(cut 4)



*French Vanilla cardstock*



## Project 1



## Prepare (4 each):



### 1F:

Papers: French Vanilla, quilt

Ink: Sapphire

Tips: Hand trim two Sweet Leaf triangles, two Lemonade triangles, two Smoothie triangles, and two Sapphire triangles from quilt patterned paper. Then, cut the Smoothie and Sapphire triangles in half. Attach the triangles to 1F, as shown. Stamp stitches.

Optional: For a card that comes together quicker, instead of creating the patchwork triangles illustrated above, cut a 3" x 3" square and attach it to 1F.



### 1G:

Paper: French Vanilla

Ink: Sapphire

### P1 Accents:

Paper: French Vanilla

Die: flower

Ink: Sapphire

### P1 Accent:

Paper: French Vanilla

Die: needle

Ink: Sapphire

Tip: Add colour with watercolour pencils.

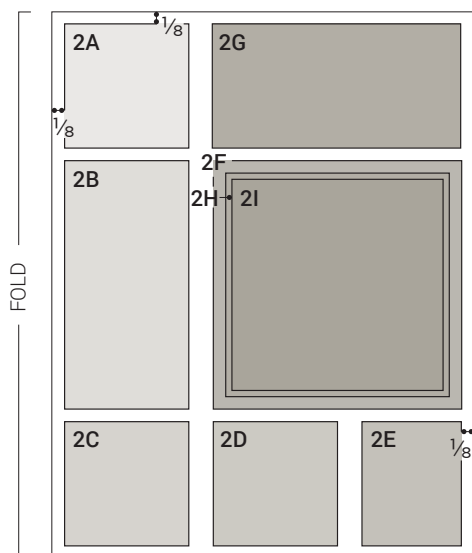


## Assemble:

1. Prepare pieces shown above
2. Attach 1A
3. Attach 1B and 1C to 1A
4. Embellish with thread
5. Attach 1D and 1E
6. Attach 1F and 1G
7. Attach accents with 3-D foam tape
8. Stamp three small flowers below 1D with Lemonade ink, as shown
9. Embellish with sparkles



## Project 2



## Prepare (4 each):



**2B, 2D, 2G:**  
Paper: light Lemonade  
Ink: Lemonade



**P2 Accent:**  
Paper: French Vanilla  
Die: heart  
Ink: Sapphire  
Tips: Add colour with watercolour pencils. Use a needle to embellish with thread.



**P2 Accents:**  
Inks: Sapphire, Smoothie  
Die: flower  
Tips: Stamp flower outline with Sapphire ink. Stamp solid flower with Smoothie ink, using second-generation stamping technique.  
Technique: Ink stamp in Smoothie and stamp it on a scratch piece of paper. Then, without re-inking, stamp on accent.

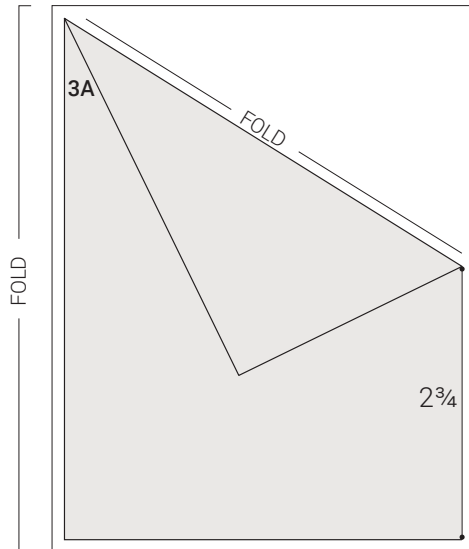


## Assemble:

1. Prepare pieces shown above
2. Attach 2A, 2B, 2C, 2D, 2E, 2F, and 2G
3. Attach 2I to 2H
4. Attach 2H with 3-D foam tape
5. Stamp stitch lines on card base with Sapphire ink, as shown
6. Embellish with heart and flower accents  
*Tip: Attach a few accents with 3-D foam tape for added dimension.*
7. Embellish with thread  
*Tips: Wrap thread around your finger a few times and then attach it to a glue dot. Attach the thread to the card with another glue dot.*
8. Embellish with sparkles

## Project 3

## Prepare (4 each):



### P3 Accent:

Paper: French Vanilla

Die: flower

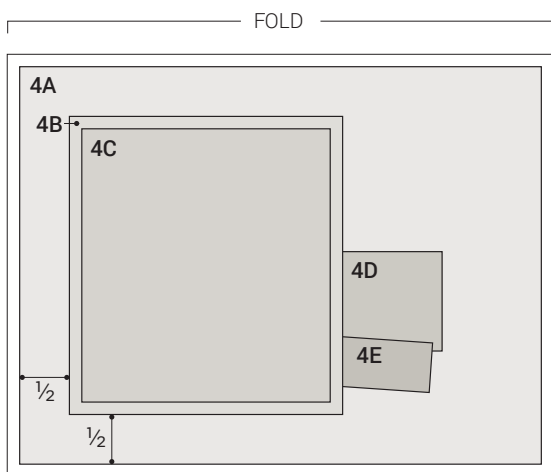
Ink: Smoothie



### Assemble:

1. Prepare piece shown above
2. Attach 3A  
*Tip: Fold the top right corner down, as shown on the pattern, and attach it with a glue dot.*
3. Stamp sentiment and stitch line on card base with Sapphire ink, as shown
4. Stamp small flowers on card base with Smoothie ink, as shown
5. Add colour to sentiment with watercolour pencils, as shown
6. Attach flower accent with 3-D foam tape
7. Embellish with thread  
*Tips: Wrap the thread around your finger a few times and then attach it to a glue dot. Attach the thread to the card with another glue dot.*

## Project 4



## Prepare (4 each):



### 4C:

Paper: French Vanilla

Tip: Add colour with watercolour pencils.



### P4 Accent:

Paper: French Vanilla

Die: spool

Ink: Sapphire, Smoothie

Tips: Add colour with watercolour pencils. Use second-generation stamping technique for flowers.

Technique: Ink small flower in Sapphire and stamp it on a scratch piece of paper. Then, without re-inking, stamp on accent.



### P4 Accent:

Paper: French Vanilla

Die: needle

Ink: Sapphire

Tip: Add colour with watercolour pencils.



### P4 Accent:

Paper: French Vanilla

Die: flower

Ink: Lemonade



## Assemble:

1. Prepare pieces shown above
2. Attach 4A
3. Attach 4C to 4B
4. Attach 4B with 3-D foam tape
5. Dovetail 4D and 4E, and attach
6. Attach spool, needle, and flower accents with 3-D foam tape, as shown
7. Embellish with thread
 

*Tips: Wrap the thread around your finger a few times and attach it to a glue dot. Attach the thread to the card with another glue dot.*