



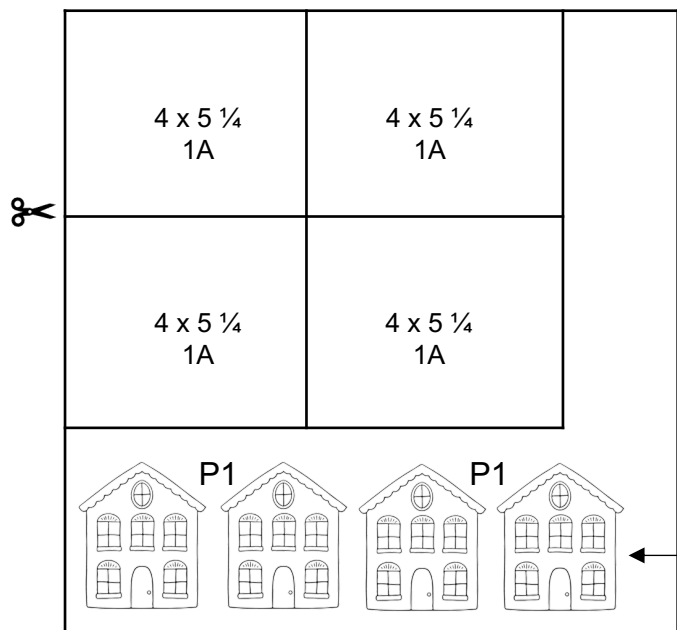
Materials Needed:

CC72360	Memory Lane Cardmaking Workshop	Z3224	Small Round Waterbrush
CC72356	Memory Lane Stamp Set	Z4575	Black LePen
Z4189	Intense Black Stamp Pad	Y1009	2 x 3-1/2 Block
Z6502	Peach Stamp Pad	Z534	Micro-Tip Scissors
Z6536	Honey Butter Stamp Pad	Z1510	Air Touch Adhesive
Z6504	Sage Stamp Pad	Z341	Glue Dots Mini
Z3943	Circle Thin Cuts	Z2060	Thin Foam Tape
			Paper Trimmer

Getting Started:

- Gather all materials needed.
- The techniques are mixed in this workshop. If you would prefer to watercolor with ink instead of paper piecing, this workshop has been designed so that you can do that very easily!
- Stamp all images with Intense Black ink.
- Trim all Zip Strips and set aside. Measurements for the necessary pieces are listed in the card directions.
- As you cut the paper, label and sort the pieces creating a stack for each project.

Cutting Diagrams



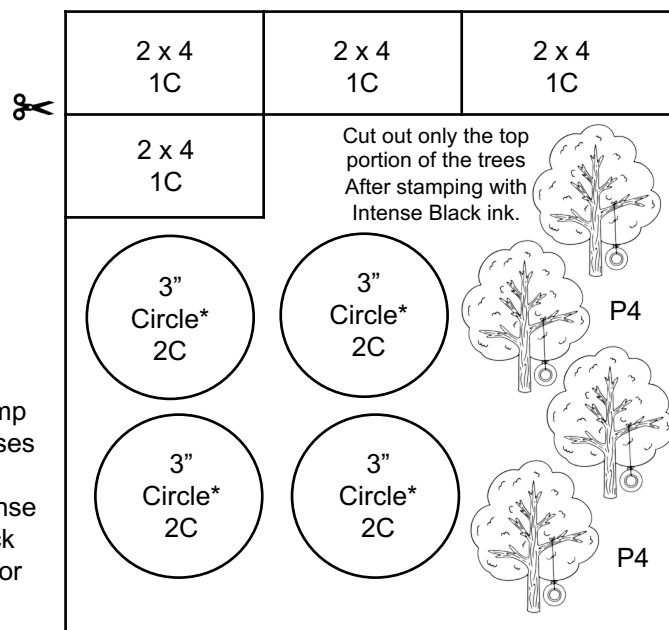
cut orientation



front



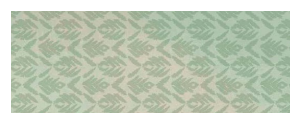
*back



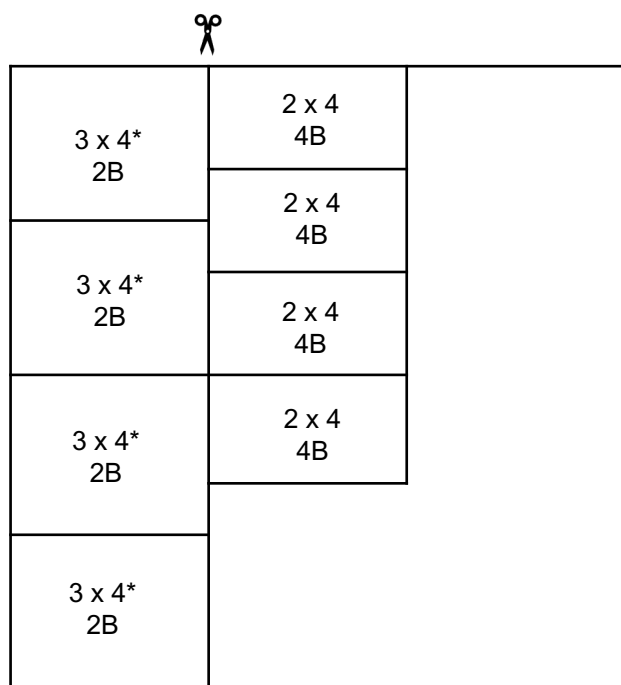
cut orientation



front



*back



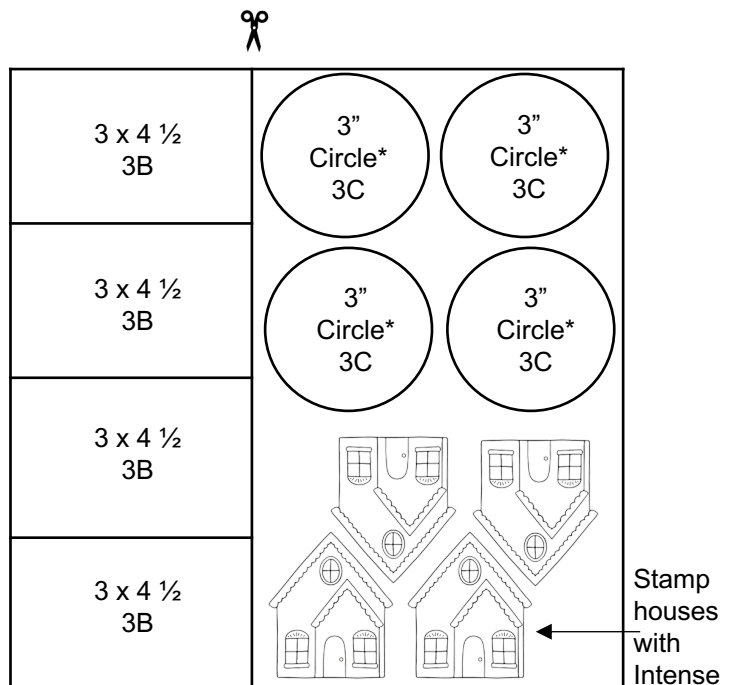
cut orientation



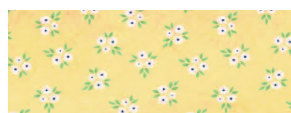
front



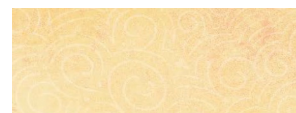
*back



cut orientation

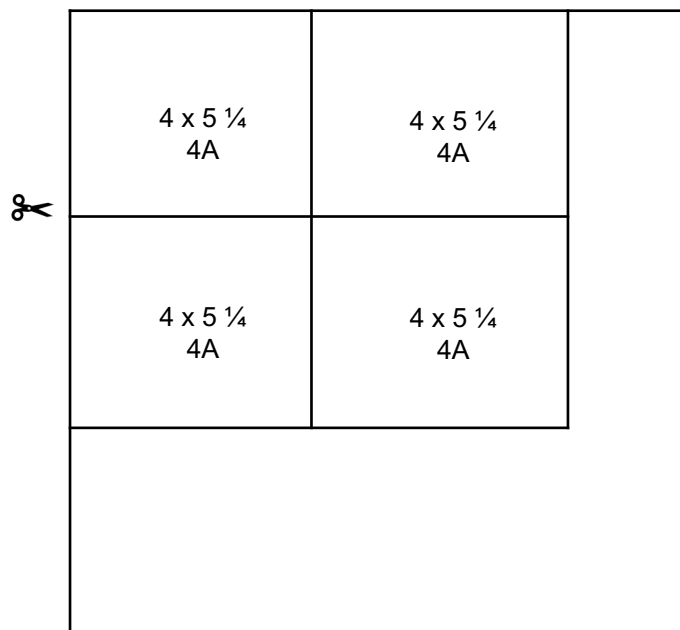


front



*back

Cutting Diagrams



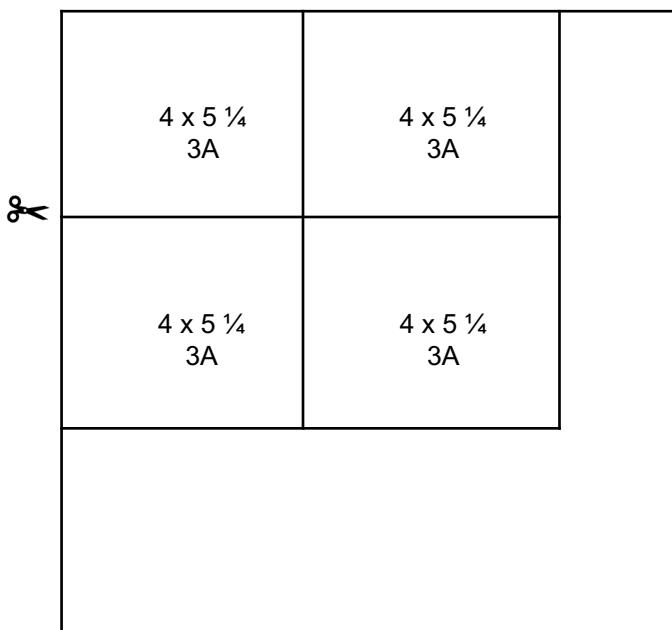
cut orientation



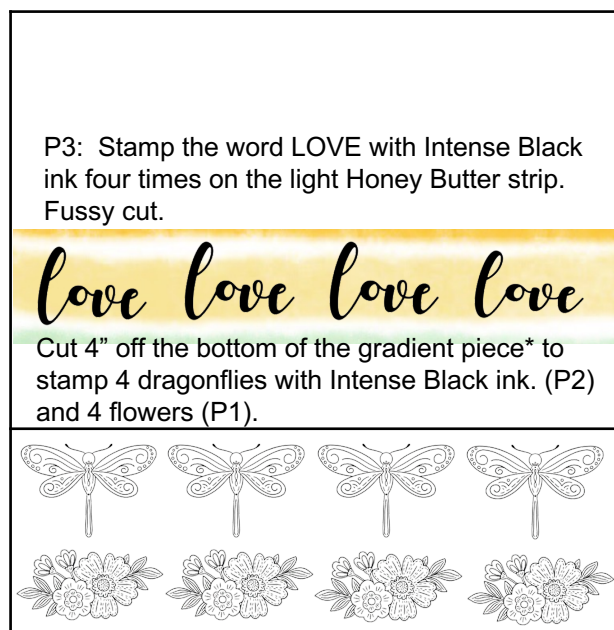
front



*back



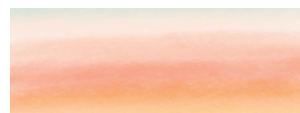
Sage Cardstock (light)



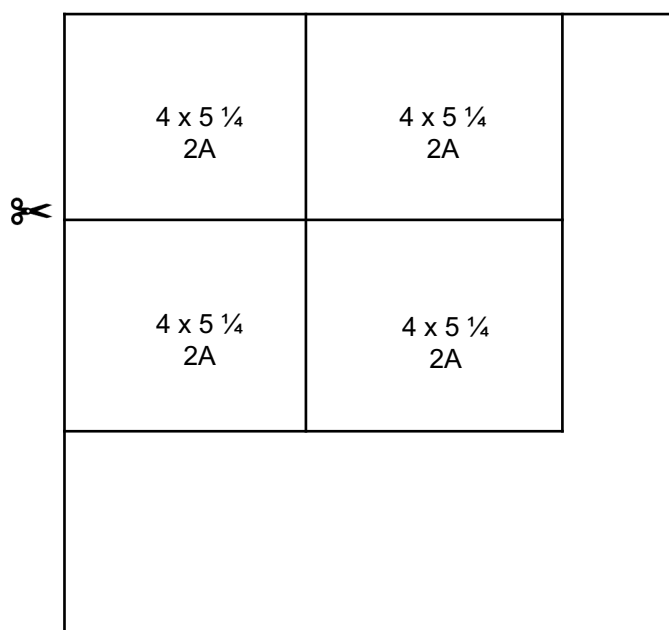
cut orientation



front

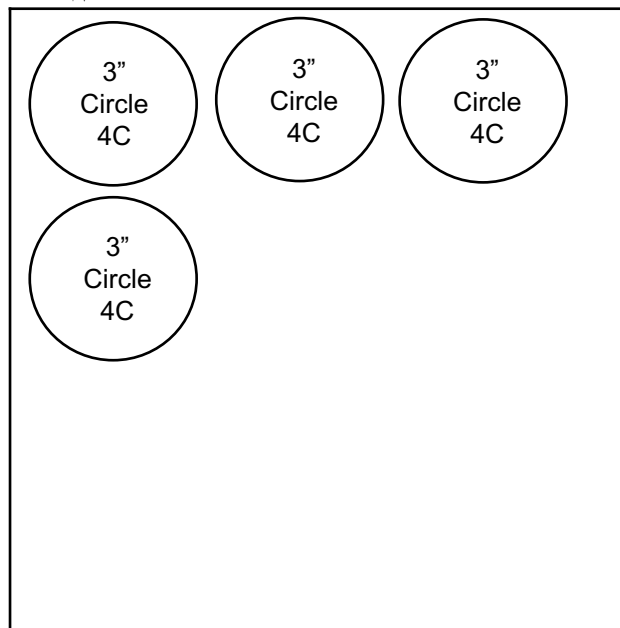


*back

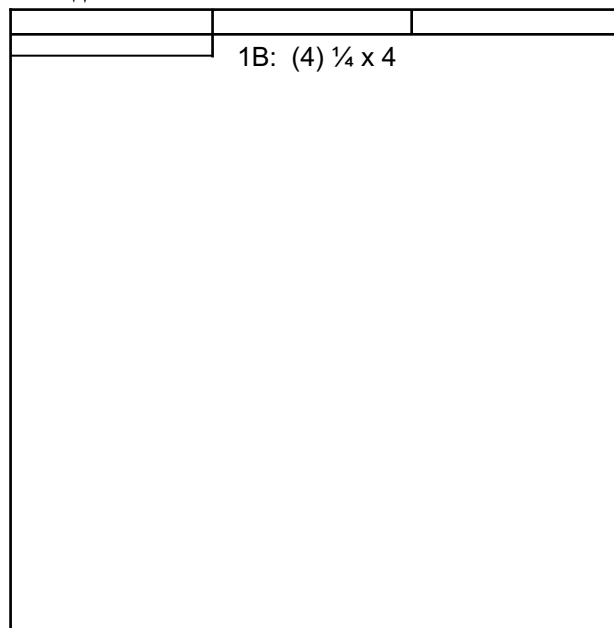


Nectarine Cardstock (light)

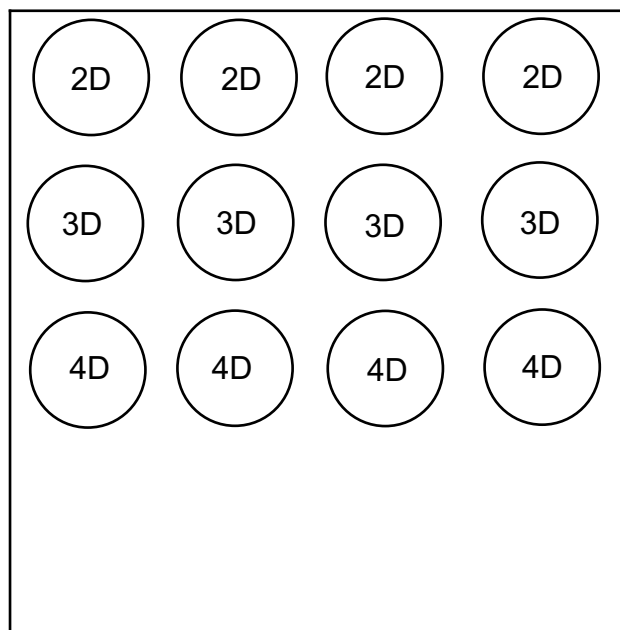
Cutting Diagrams



Sapphire Cardstock (light)

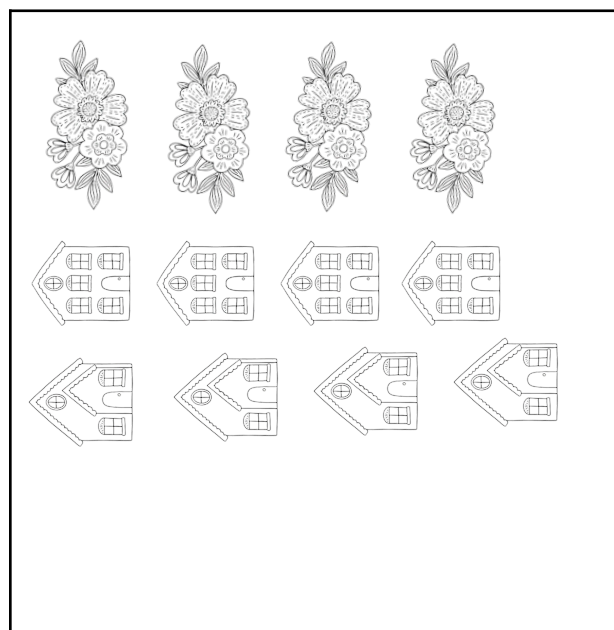


Melon Cardstock (light)



White Daisy Cardstock

(12) 2 1/2" Circles: Set aside to use on card fronts



White Daisy Cardstock

- P1: (4) Stamp Double Roof Houses with Intense Black ink (paint top roof with Sage ink)
- P1: (4) Stamp Single Roof Houses with Intense Black ink (paint roof with Sage ink)
- P1: (4) Stamp Flowers with Intense Black ink (paint leaves with Sage ink)

Project 1: Make 4 Standard Cards



Zip Strip

Using one zip strip, cut (4) 1 ½" pieces and (4) 1 ¼" pieces.



Paint and Fussy Cut for Paper Piecing

Shorter House

- Paint the arch, ledges, and door with Peach ink. Paint the roof with Sage ink.
- Fussy cut the windows and doors and adhere to the house stamped on white cardstock. Fussy cut the entire house. (NOTE: If you prefer not to paper piece, simply paint the windows and doors with Peach ink.)

Taller House

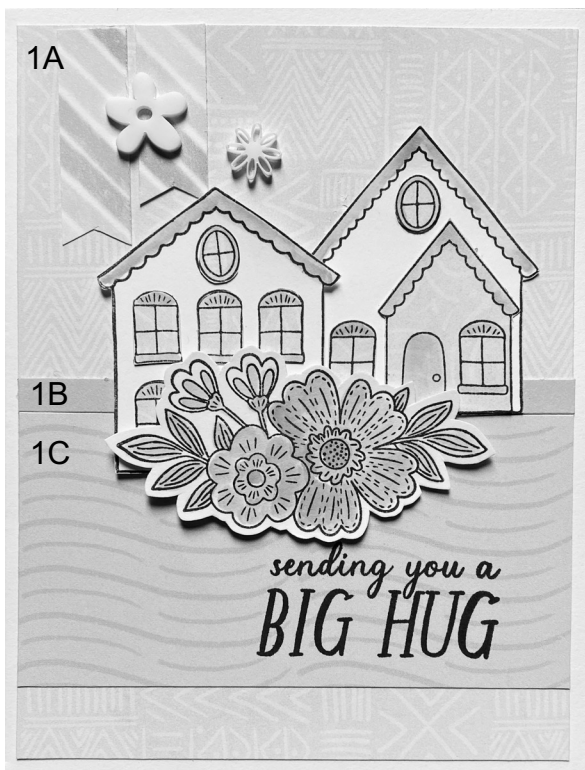
- Fussy cut the smaller portion of the house from the Honey Butter print. Adhere to house stamped on white cardstock.
- Paint the arch, ledges, and door with Honey Butter ink. Paint both roof lines with Sage ink.
- Fussy cut the windows and adhere to house. (NOTE: If you prefer not to paper piece, you can simply paint the windows and door with Honey Butter ink.)
- Fussy cut the entire house.

Flowers

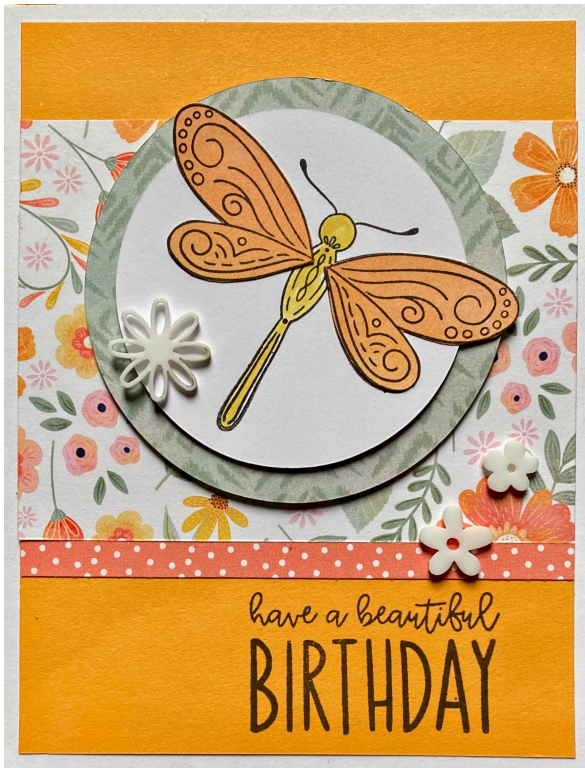
- Paint the leaves with Sage ink. The flowers are painted with Honey Butter and Peach ink. Fussy cut.

Assembly

- Adhere 1A to card front.
- Attach 1C ¾" from the bottom of the card.
- Follow by adding 1B.
- Stamp sentiment toward the bottom of the Sage print with Intense Black ink.
- Adhere the tall house directly to the card 2¾" from the bottom and ½" from the right side of the card.
- Use foam tape to adhere the shorter house 2¼" from the bottom and ¾" from the left of the card front.
- Center the flowers below the houses with foam tape.
- Dovetail one end of the Zip Strip pieces. Adhere the long piece 3/8" from the left side of the card and place the shorter piece to the right of the first.
- Use Glue Dots to adhere the White Acrylic Flowers.



Project 2: Make 4 Standard Cards



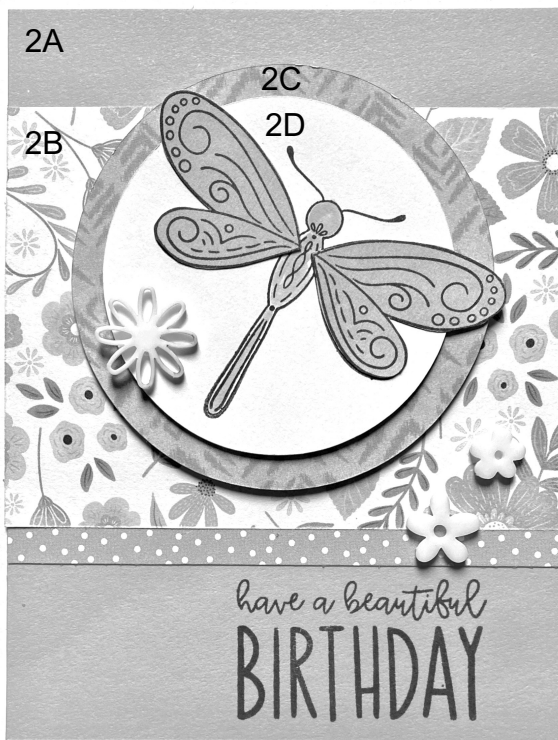
Zip Strip

Cut one Zip Strip lengthwise into $\frac{1}{4}$ " x 12" strips. Cut the $\frac{1}{4}$ " strips into (4) 4" pieces.



Paint and Fussy Cut for Paper Piecing

- Stamp dragonfly on 2D with Intense Black ink. The wingtips will not fit, but that is okay because we are covering them.
- Paint the center of the dragonfly with Honey Butter ink.
- Fussy cut the wings from the pre-stamped dragonflies. Adhere them to the dragonfly on the circle.
- Stamp the sentiment on the bottom right of 2A with Intense Black ink.



Assembly

- Adhere 2A to card front.
- Attach 2B 1" from the top of the card.
- Follow with Zip Strip. You can attach this zip strip piece on top of or directly below the floral piece. It will all depend where you stamped your sentiment.
- Use foam tape to adhere 2D to 2C. Follow by adding layered circle to card front with foam tape centered from side to side and $\frac{1}{2}$ " from top of card.
- Use Glue Dots to adhere the White Acrylic Flowers.

Project 3: Make 4 Standard Cards



Zip Strip

Cut one Zip Strip lengthwise into $\frac{1}{4}$ " x 12" strips. Cut the $\frac{1}{4}$ " strips into (4) 5" pieces and cut each strip diagonally one one end.



Paint and Fussy Cut for Paper Piecing

- Stamp flower towards the bottom of 3D with Intense Black ink.
- Paint the leaves with Sage ink.
- Fussy cut the stamped flowers. The large flowers are cut in one piece, and the small flowers are cut in two separate small pieces. Adhere them to the stamped flower. (NOTE: If you prefer not to fussy cut these small pieces, simply paint the flowers with Honey Butter ink.)
- Stamp SO MUCH above the flower cluster with Intense Black ink.



Assembly

- Adhere 3A to card front.
- Dovetail one end of 3B and adhere $\frac{1}{2}$ " from the left of the card.
- Follow with Zip Strip. Attach 1" from left of card.
- Use foam tape to adhere 3D to 3C. Follow by adding layered circle to card front with foam tape 1" from the left and $\frac{3}{4}$ " from top of card.
- Overlap the word LOVE beneath the circle with foam tape.
- Use Glue Dots to adhere the White Acrylic Flowers.

Project 4: Make 4 Standard Cards



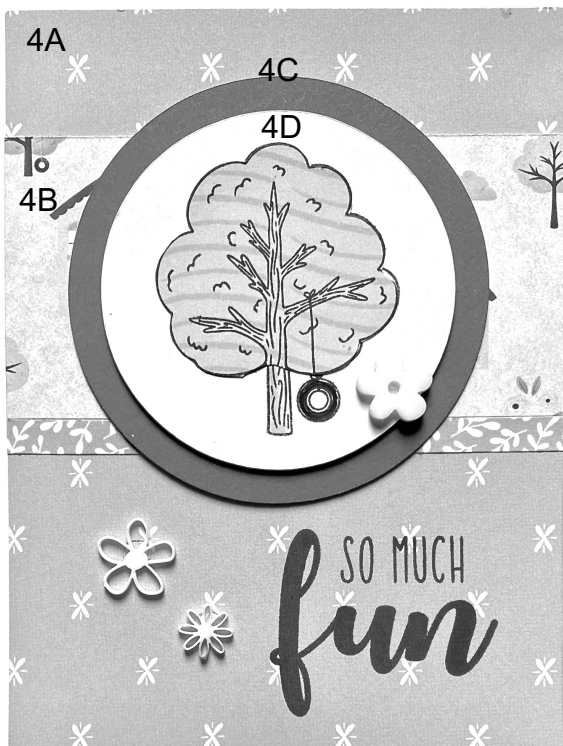
Zip Strip

Cut one Zip Strip lengthwise into $\frac{1}{4}$ " x 12" strips. Cut the $\frac{1}{4}$ " strips into (4) 4" pieces.



Paint and Fussy Cut for Paper Piecing

- Stamp tree in center of 4D with Intense Black ink.
- Paint the bottom of the trunk with Sage ink.
- Color the tire swing with Black Journaling Pen.
- Fussy cut the top of the tree from the Sage Print and adhere to 4D.
- Stamp SO MUCH FUN at the bottom right of 4A with Intense Black ink. (TIP: It's best not to put these two stamps on a block to stamp at the same time. The thickness may not allow a good stamp. Instead, stamp FUN first, and then SO MUCH above it.)



Assembly

- Adhere 4A to card front.
- Add 4B 1" from top of card and then follow with zip strip.
- Use foam tape to adhere 4D to 4C. Follow by adding layered circle to card front with foam tape centered and $\frac{1}{2}$ " from top of card.
- Use Glue Dots to adhere the White Acrylic Flowers.