

Sending You Hugs | 20 cards, 2 each of 10 designs

Materials Needed:

CC42110 Sending You Hugs Cardmaking Workshop Kit
 Z4189 Intense Black Exclusive Inks™ Stamp Pad
 Z3132 Watercolor Paints
 Z3225 Medium Round Waterbrush
 Z2060 Thin 3-D Foam Tape
 Z341 Glue Dots® Mini Dots
 Y1000 1" × 1" My Acrylix® Block
 Y1002 1" × 3½" My Acrylix® Block
 Y1003 2" × 2" My Acrylix® Block
 Y1006 3" × 3" My Acrylix® Block
 Paper Trimmer
 Scissors
 Adhesive
 Ruler
 Sticky Notes

Getting Started:

- Gather all materials needed.
- Trim all zip strips and set aside. The zip strip is the ½" accent paper along the top of each sheet of patterned paper.
- Check the cut orientation below each cutting guide image. This will show you how to cut the paper, keeping the patterns on your project pieces facing the right direction.
- Light grey pieces on your cutting guide are project pieces. White pieces are leftover paper.
- As you cut your paper, sort the pieces as indicated in the cutting guide, creating a stack for each project.

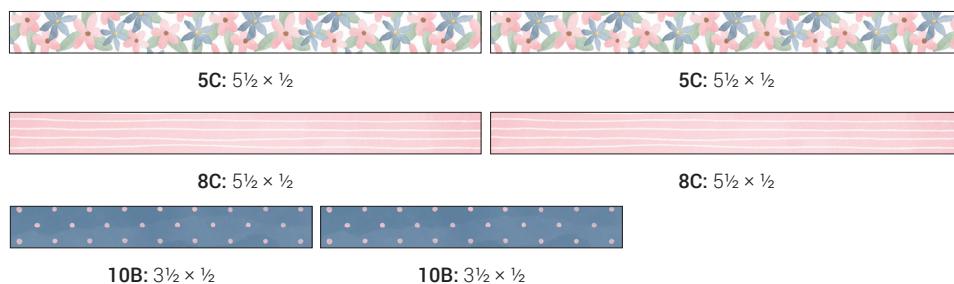
Key:

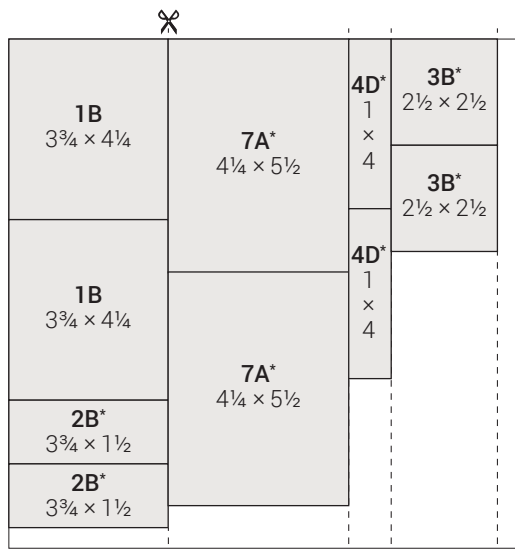
✂ = first cut | * = use back of paper | P = Project

■ = suggested stamp arrangement

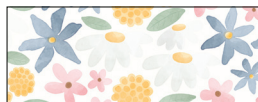
Cutting Diagrams:

zip strips





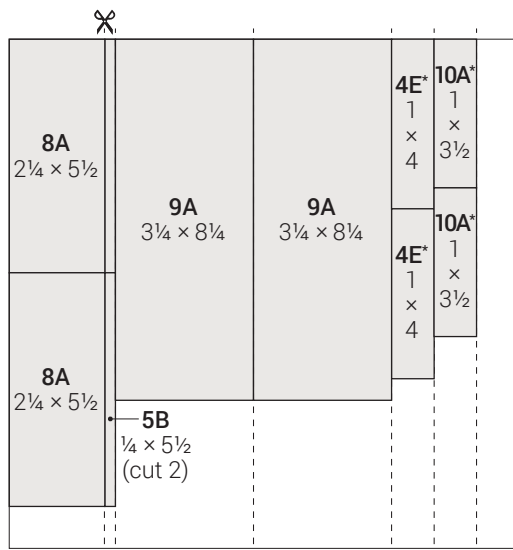
cut orientation



front



*back



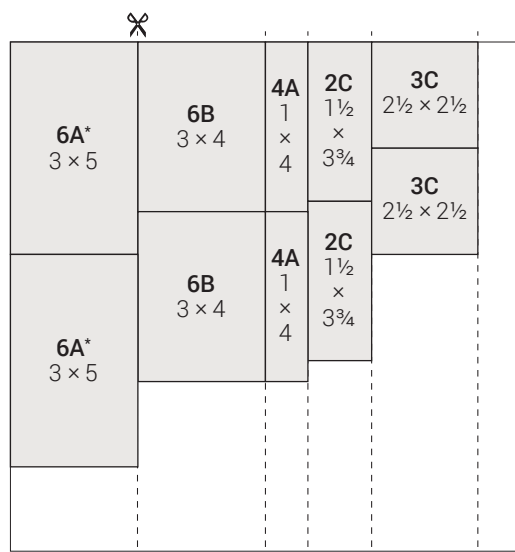
cut orientation



front



*back



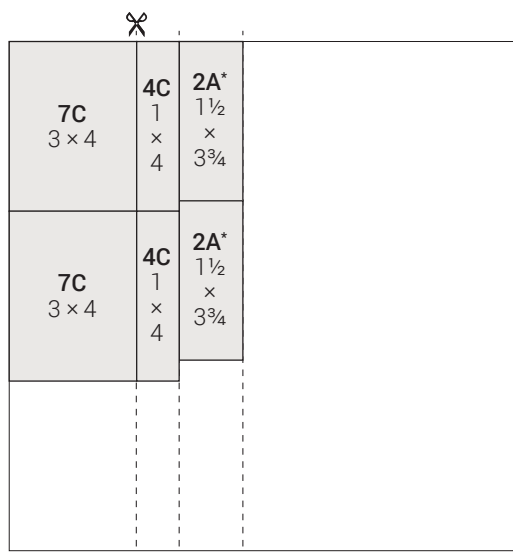
cut orientation



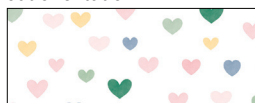
front



*back



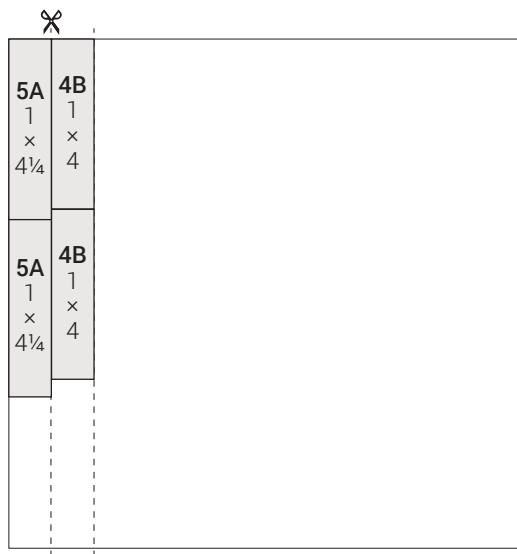
cut orientation



front



*back



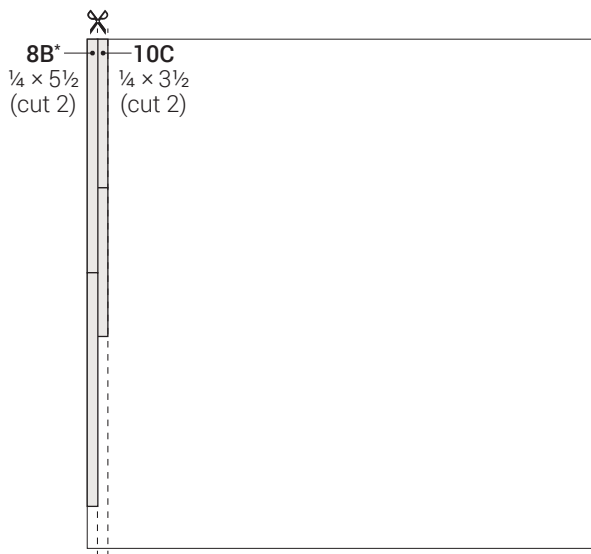
cut orientation



front



*back



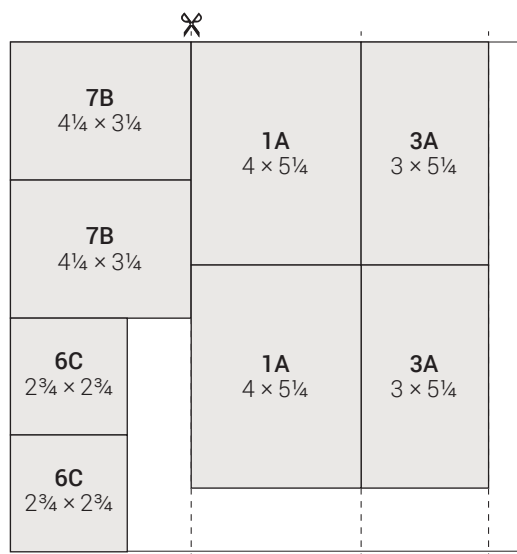
cut orientation



front



*back



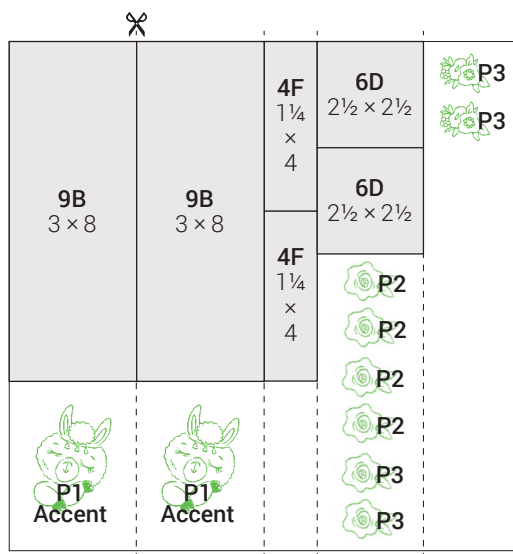
Blue Belle cardstock



dark

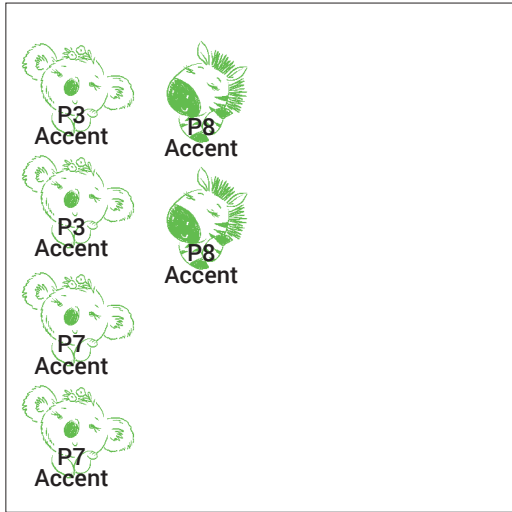


*light



White Daisy cardstock





White Daisy cardstock



Project 1: Make 2



Prepare (2):

- Stamp llama on White Daisy cardstock with Intense Black ink, let dry, then add color with watercolor paints and water brush, and hand trim (Pink—12, Green—26, Blue—24, Yellow—4, Grey—35)



Assemble:

1. Dovetail and attach 1A, as shown
2. Attach 1B, as shown
3. Attach prepared llama accent with thin 3-D foam tape, as shown
4. Stamp "HELLO friend" on 1B with Intense Black ink, as shown
5. Embellish with sequins
Tip: Attach with glue dots.

Project 2: Make 2



Prepare (2 each):

- Stamp two large flowers on White Daisy cardstock with Intense Black ink, let dry, then add color with watercolor paints and waterbrush, and hand trim (Pink—12, Green—27, Yellow—mix 4 and 8)



Assemble:

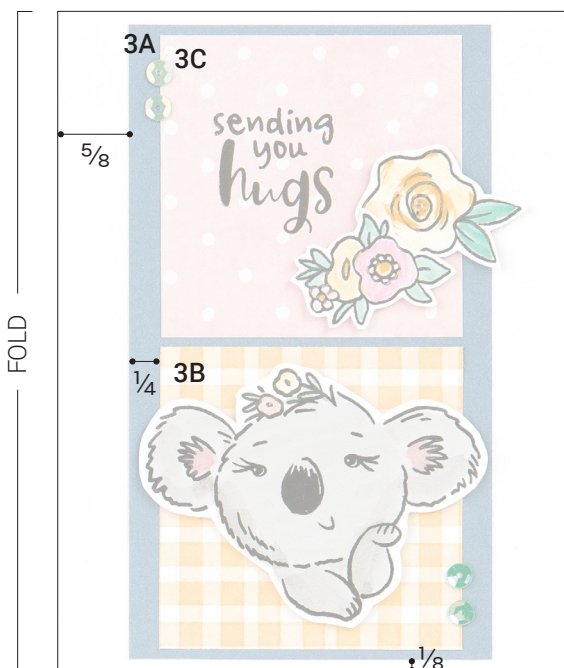
1. Attach 2A, 2B, and 2C
2. Stamp dashed line between 2A and 2B, and 2B and 2C, with Intense Black ink, as shown
Tip: If needed, use the masking technique along the left and right sides, lining the masks up with the edges of 2A, 2B, and 2C.
Technique: Place a scratch piece of paper, or a sticky note, as a mask to cover the area of your project you don't want stamped. Stamp your image on the project and mask, and then remove the mask.
3. Stamp "HAPPY birthday" on 2B with Intense Black ink, as shown
4. Attach prepared flower accents
Tip: Attach top accent with thin 3-D foam tape.
5. Embellish with sequins
Tip: Attach with glue dots.

Project 3: Make 2



Prepare (2 each):

- Stamp large flower on White Daisy cardstock with Intense Black ink
- Stamp flower cluster on White Daisy cardstock with Intense Black ink
- Stamp koala on White Daisy cardstock with Intense Black ink
- Add color to stamped flower, flower cluster, and koala accents with watercolor paints and waterbrush, let dry, and hand trim (Pink—12, Green—27, Yellow—4 and 8, Grey—35)



Assemble:

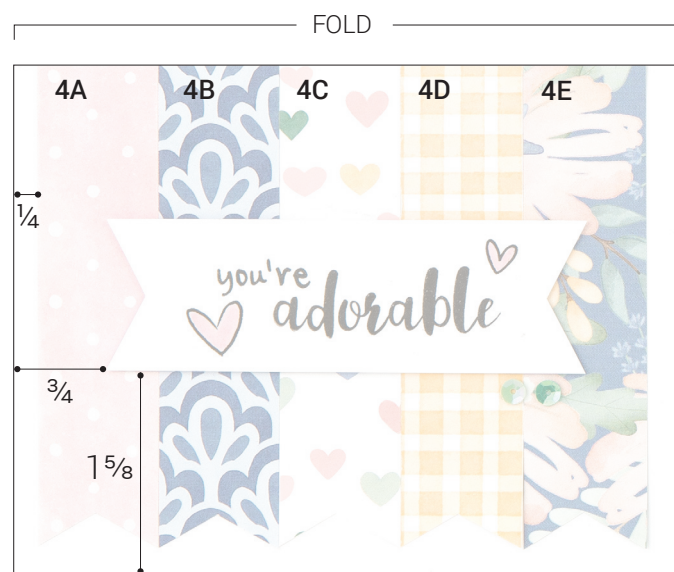
1. Attach 3A
2. Attach 3B and 3C, as shown
3. Stamp "sending you hugs" on 3C with Intense Black ink, as shown
4. Attach prepared flower accents with thin 3-D foam tape, as shown
5. Attach prepared koala accent with thin 3-D foam tape, as shown
6. Embellish with sequins
Tip: Attach with glue dots.

Project 4: Make 2

Prepare (2):



- Stamp “you’re adorable” on 4F with Intense Black ink, as shown
- Stamp large and small hearts on 4F with Intense Black ink, let dry, then add color with watercolor paints and waterbrush, and dovetail both ends (Pink—12)

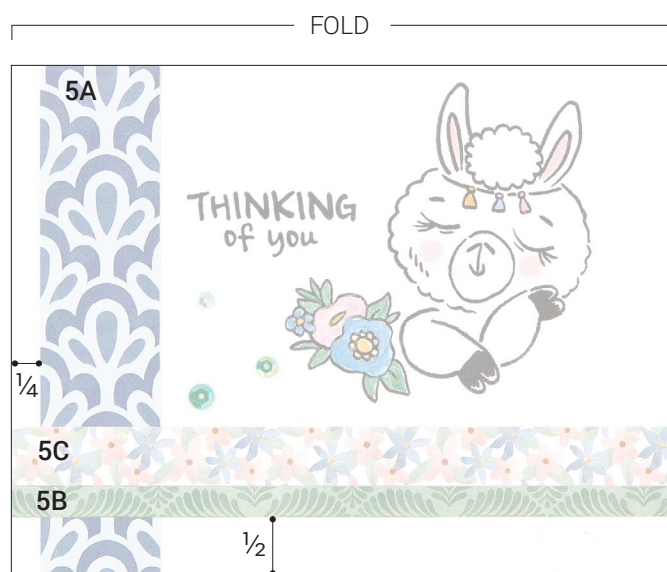
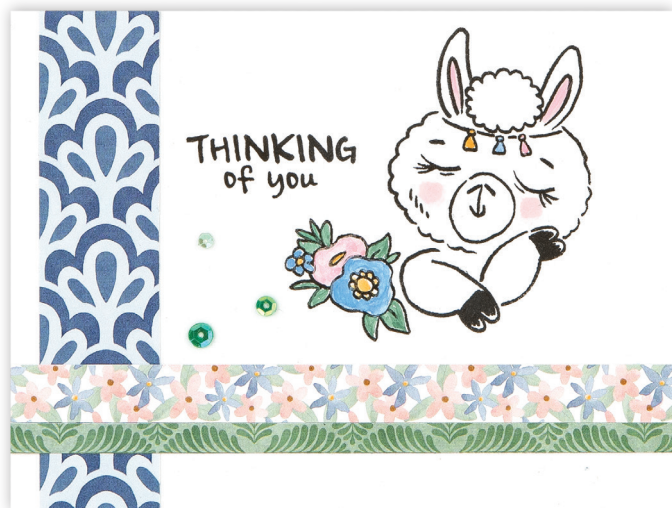


Assemble:

1. Dovetail and attach 4A, 4B, 4C, 4D, and 4E
2. Attach 4F with thin 3-D foam tape
3. Embellish with sequins

Tip: Attach with glue dots.

Project 5: Make 2



Assemble:

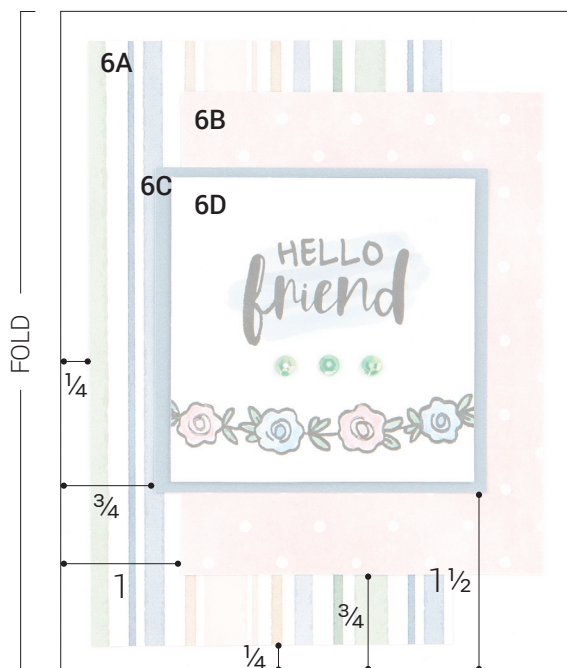
1. Attach 5A
2. Attach 5B and 5C
3. Stamp llama on card base with Intense Black ink, as shown
4. Stamp "THINKING of you" on card base with Intense Black ink, as shown
5. Stamp flower cluster on card base with Intense Black ink, as shown
6. Add color with watercolor paints and waterbrush, as shown (Pink—12, Green—mix 26 and 30, Blue—24, Yellow—4)
Tip: Make sure the Intense Black ink is dry.
7. Embellish with sequins
Tip: Attach with glue dots.

Project 6: Make 2



Prepare (2):

- Add color wash on 6D with watercolor paints and waterbrush, let dry (Blue—24)
- Stamp “HELLO friend” on 6D with Intense Black ink, as shown
- Stamp flower garland on 6D with Intense Black ink, let dry, then add color with watercolor paints and waterbrush (Pink—12, Green—26, Blue—24)



Assemble:

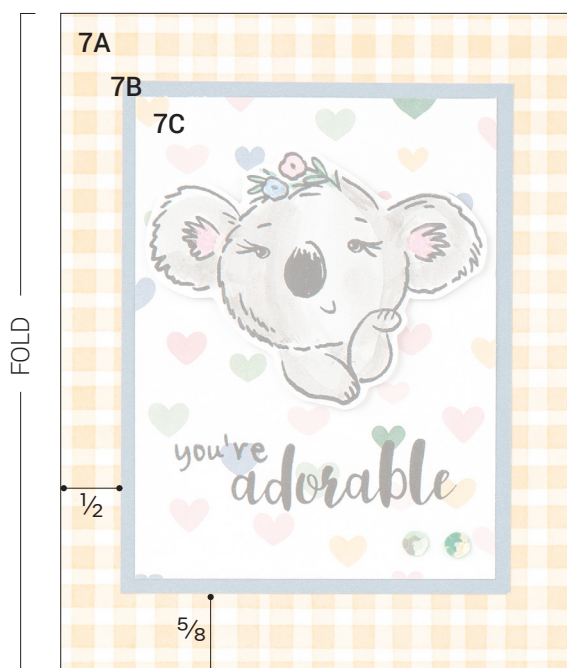
1. Attach 6A, 6B, and 6C
 2. Attach 6D with thin 3-D foam tape
 3. Embellish with sequins
- Tip: Attach with glue dots.*

Project 7: Make 2



Prepare (2):

- Stamp koala on White Daisy cardstock with Intense Black ink, let dry, then add color with watercolor paints and waterbrush, and hand trim (Pink—12, Green—26, Blue—24, Grey—35)



Assemble:

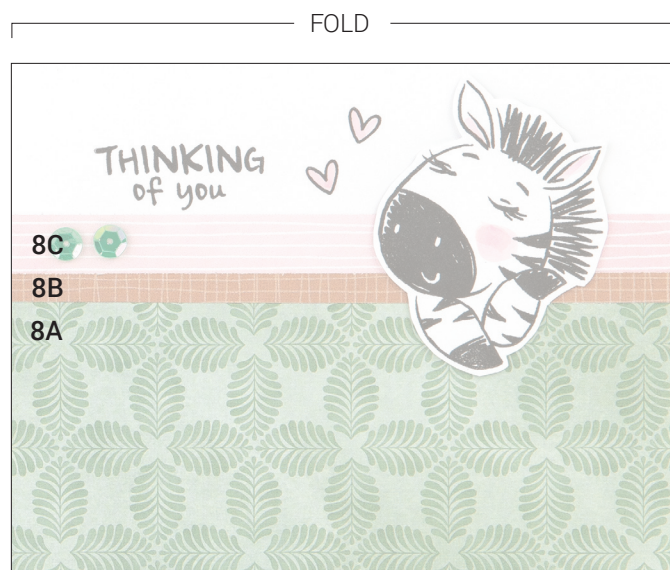
1. Attach 7A, 7B, and 7C
2. Stamp "you're adorable" on 7C with Intense Black ink, as shown
3. Attach prepared koala accent with thin 3-D foam tape, as shown
4. Embellish with sequins
Tip: Attach with glue dots.

Project 8: Make 2

Prepare (2):



- Stamp zebra on White Daisy cardstock with Intense Black ink, let dry, then add color with watercolor paints and waterbrush, and hand trim (Pink—12)



Assemble:

1. Attach 8A, 8B, and 8C
2. Stamp "THINKING of you" on card base with Intense Black ink, as shown
3. Stamp small hearts on card base with Intense Black ink, let dry, then add color with watercolor paints and waterbrush (Pink—12)
4. Attach prepared zebra accent with thin 3-D foam tape
5. Embellish with sequins
Tip: Attach with glue dots.

Project 9: Make 2

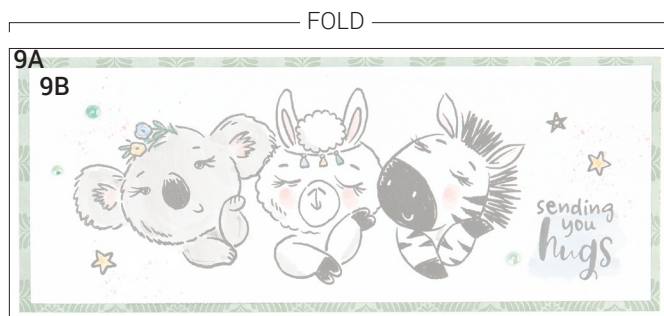


Prepare (2):

- Stamp koala, llama, and zebra on 9B with Intense Black ink, as shown
- Stamp "sending you hugs" on 9B with Intense Black ink, as shown
- Stamp stars on 9B with Intense Black ink, as shown
- Add color to 9B with watercolor paints and waterbrush (Pink—12, Green—26, Blue—24, Yellow—4, Grey—35)
Tip: Make sure the Intense Black ink is dry.
- Add watercolor splatters to 9B, as shown (Pink—12)
Technique: Pick up paint with the tip of a waterbrush and gently tap the barrel of the brush on your index finger, above where you want the splatters to land.

Assemble:

1. Attach 9A
2. Attach 9B, once it is dry
3. Embellish with sequins
Tip: Attach with glue dots.



Project 10: Make 2



Assemble:

1. Attach 10A, 10B, and 10C
2. Stamp flower garland on card base with Intense Black ink, as shown
3. Stamp llama and zebra on card base with Intense Black ink, as shown
4. Stamp small flower on card base with Intense Black ink, as shown
5. Stamp "you're the cutest" on card base with Intense Black ink, as shown
6. Add color with watercolor paints and waterbrush, as shown (Pink—12, Green—mix 26 and 30, Blue—24, Yellow—4)
Tip: Make sure the Intense Black Ink is dry.
7. Embellish with sequins
Tip: Attach with glue dots.

