



Materials Needed

	It's the Little Things 6x6 Mini Album Bundle
Z2805	Black Exclusive Ink Stamp Pad
Z4575	Black LePen
Z1513	White Gel Pens
Y1002	1 x 3 1/2 Block
Y1009	2 x 3 1/2 Block
	Paper Trimmer
	Scissors
	Adhesives

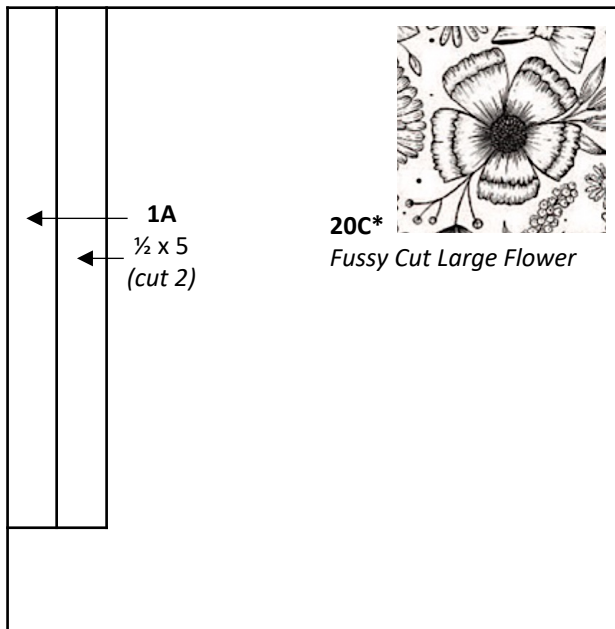
Photo Placeholders

Page 1: 3 x 4	Page 11: (2) 3 x 4
Page 2: 4 x 4	Page 12: 4 x 6
Page 3: (2) 3 x 3	Page 13: 4 x 6
Page 4: 4 x 4	Page 14: 3 x 4
Page 5: 4 x 6	Page 15: (2) 3 x 3
Page 6: 4 x 4	Page 16: 4 x 6
Page 7: (2) 3 x 3	Page 17: (2) 3 x 4
Page 8: 3 x 4	Page 18: 3 x 3
Page 9: 3 x 4	Page 19: 3 x 4
Page 10: 4 x 4	Page 20: 4 x 6

Tips for Getting Started

- 6 x 6 White Daisy cardstock will serve as the base for all the pages.
- This album was designed simply to house anywhere from 25 – 30 photos. If you'd like, it would be easy enough to add Flip Flaps as you have room.
- When you are mat a photo on printed paper, consider printing your photos with a border. This allows the photo to pop from your page. See Page 1 for an example.
- Check the cut orientation below each cutting guide image. This will show you how to cut the paper, keeping the pattern pieces on your project facing the right direction.
- As you cut the paper, label and sort the pieces creating a stack for each page.

Cutting Diagrams



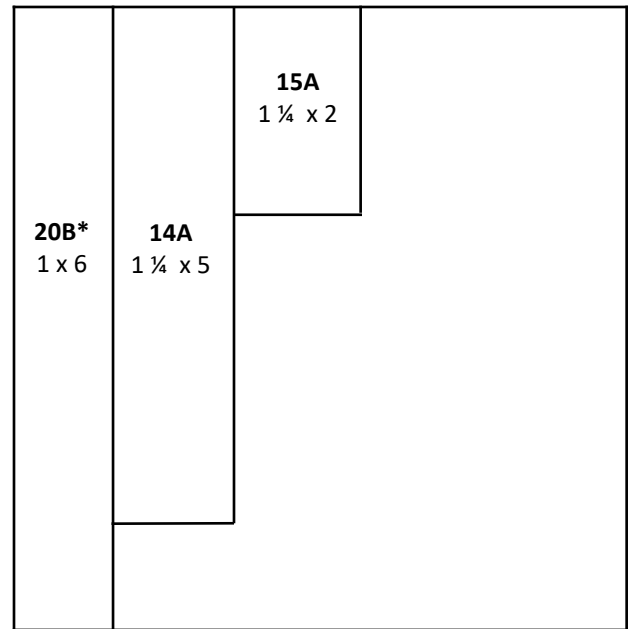
cut orientation



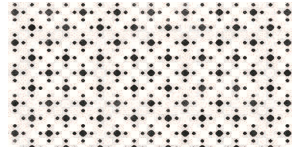
front



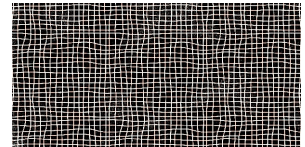
*back



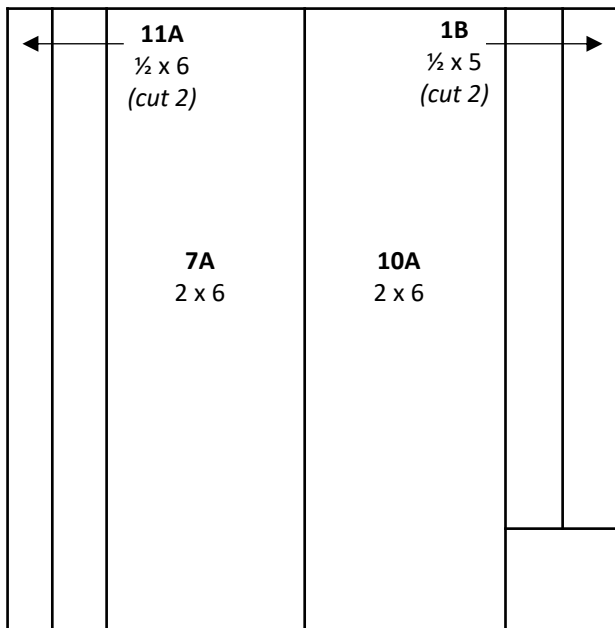
cut orientation



front



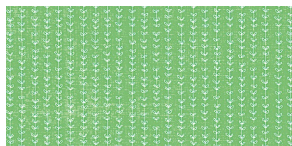
*back



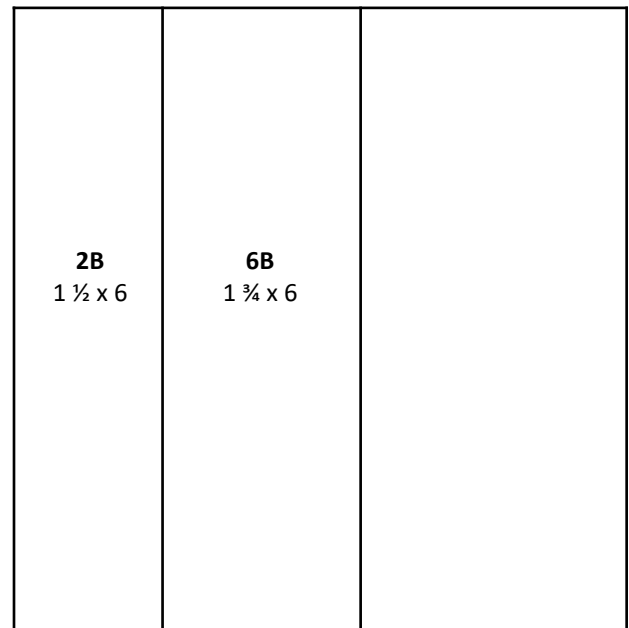
cut orientation



front



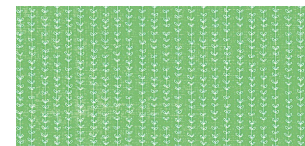
*back



cut orientation

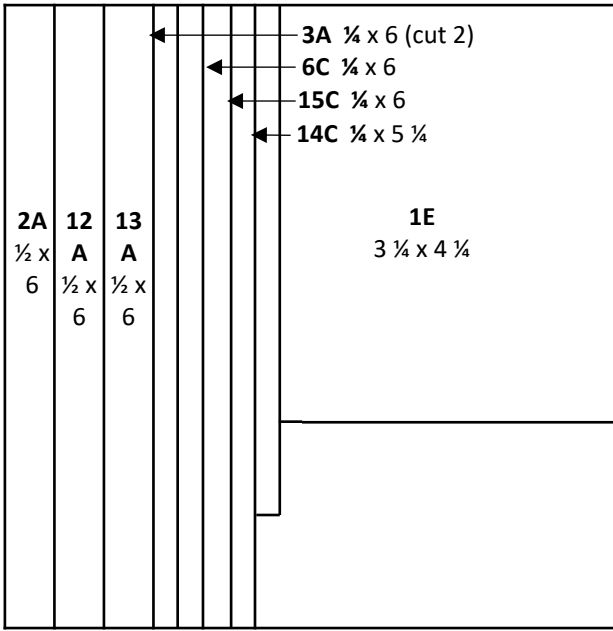


front

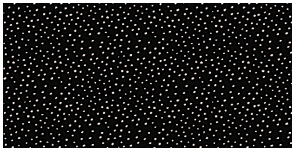


*back

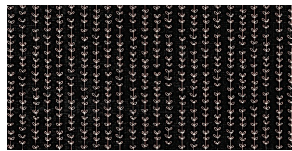
Cutting Diagrams



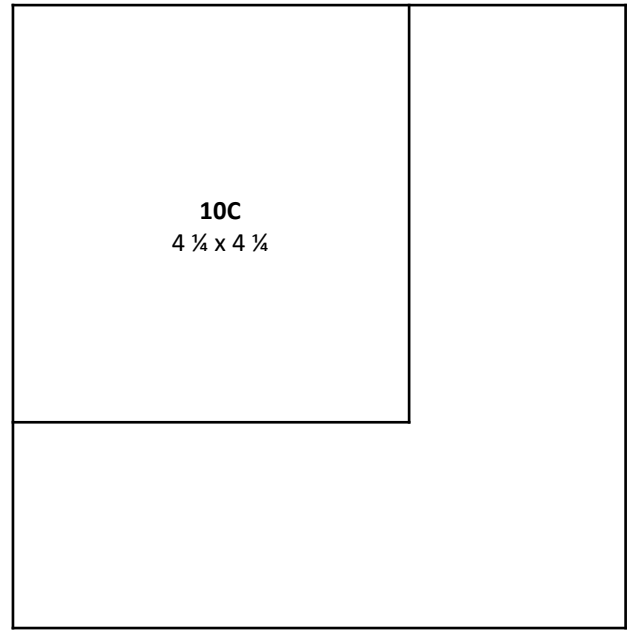
cut orientation



front



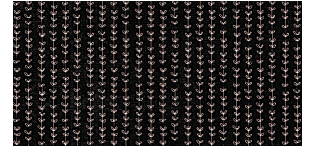
*back



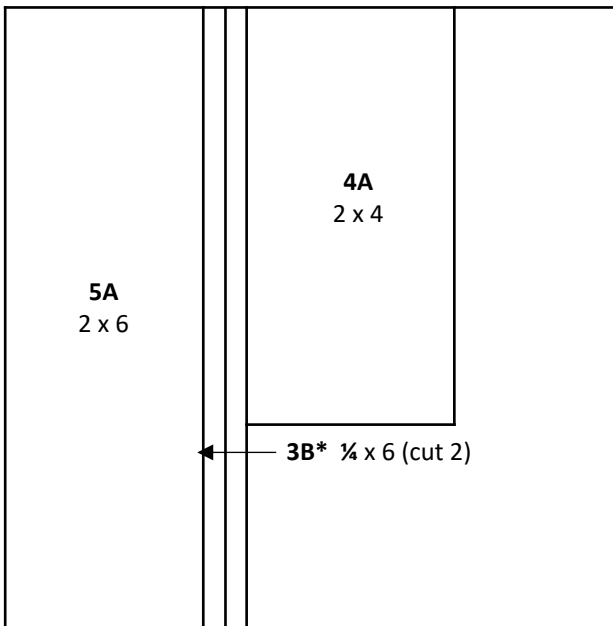
cut orientation



front



*back



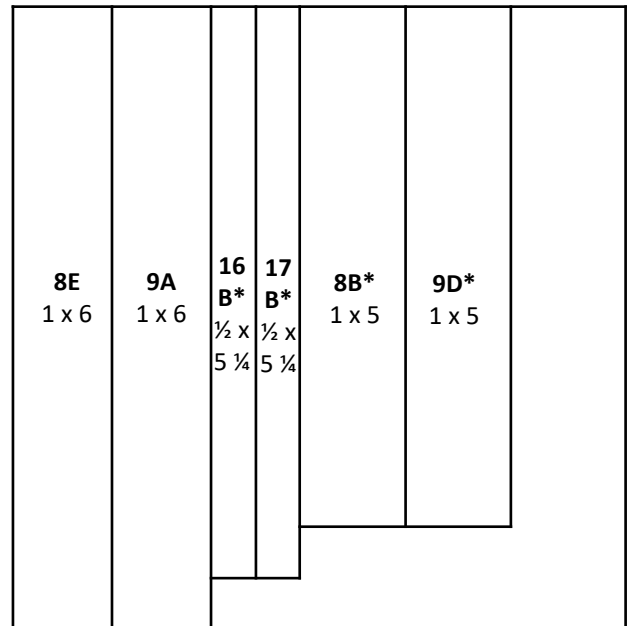
cut orientation



front



*back



cut orientation

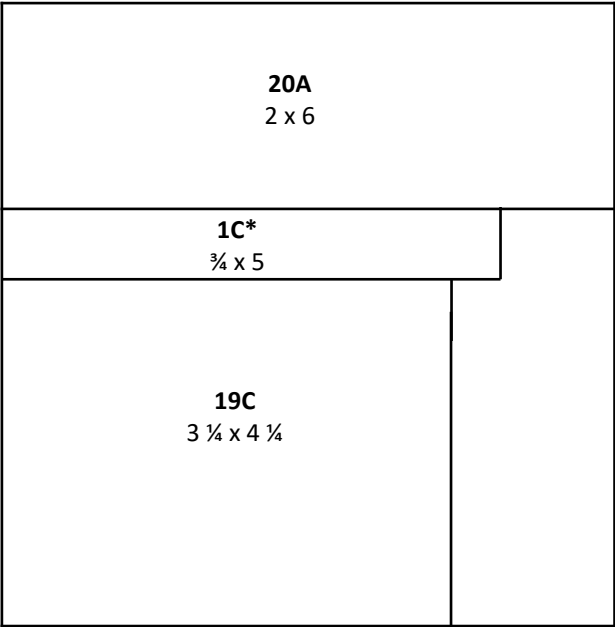


front



*back

Cutting Diagrams



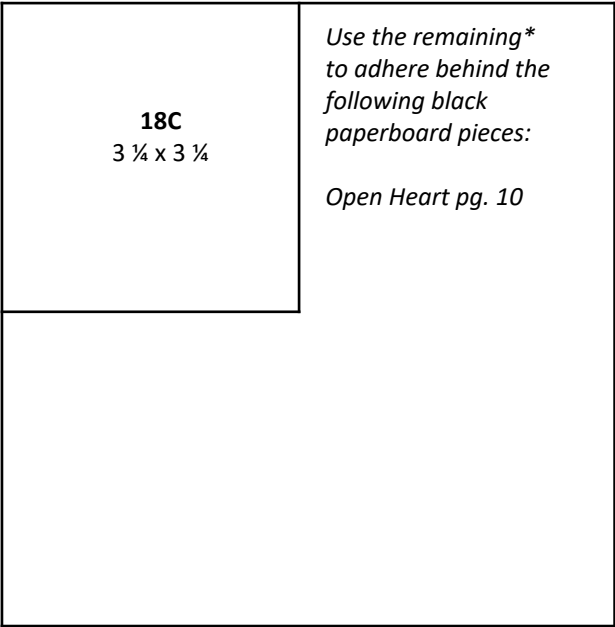
cut orientation



front



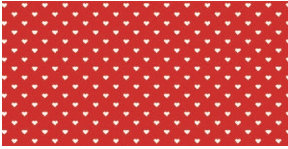
*back



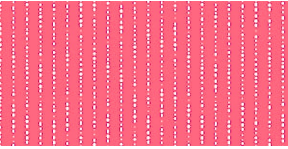
Use the remaining*
to adhere behind the
following black
paperboard pieces:

Open Heart pg. 10

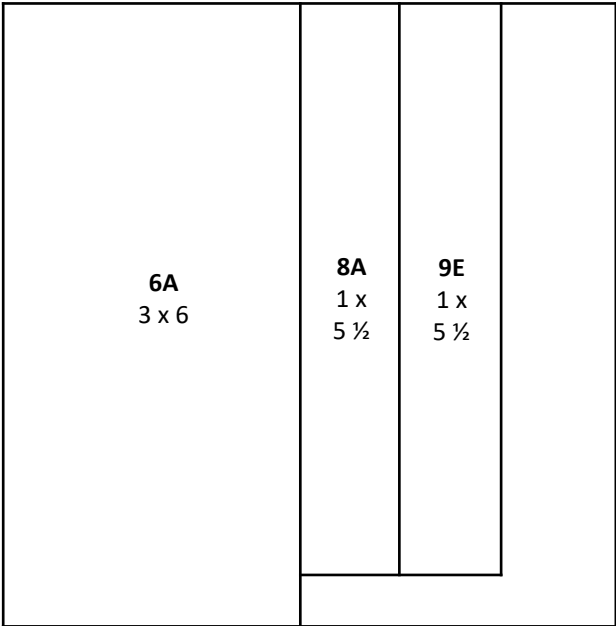
cut orientation



front



*back



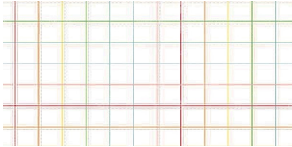
Use the
remaining
paper to
adhere behind
the following
black
paperboard
pieces:

Smile pg. 1
How Cool pg. 3
Fun Times pg.
19

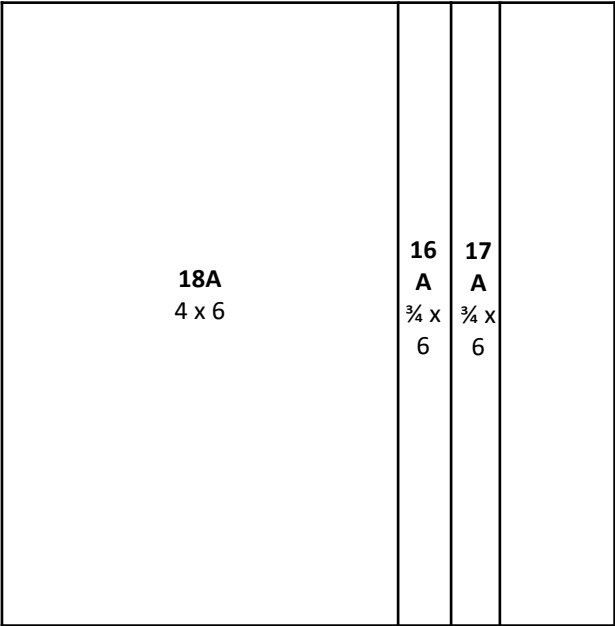
cut orientation



front



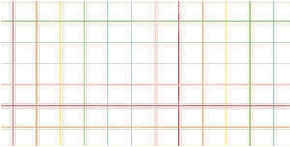
*back



cut orientation

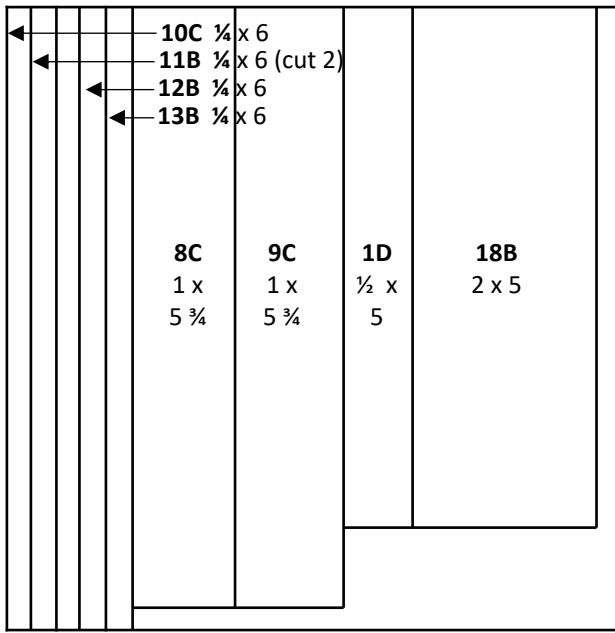


front

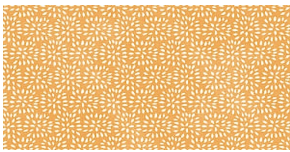


*back

Cutting Diagrams



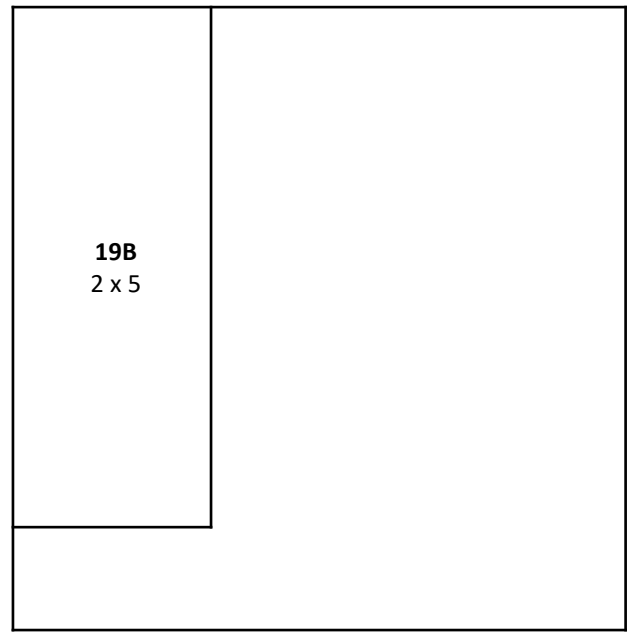
cut orientation



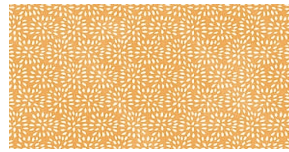
front



*back



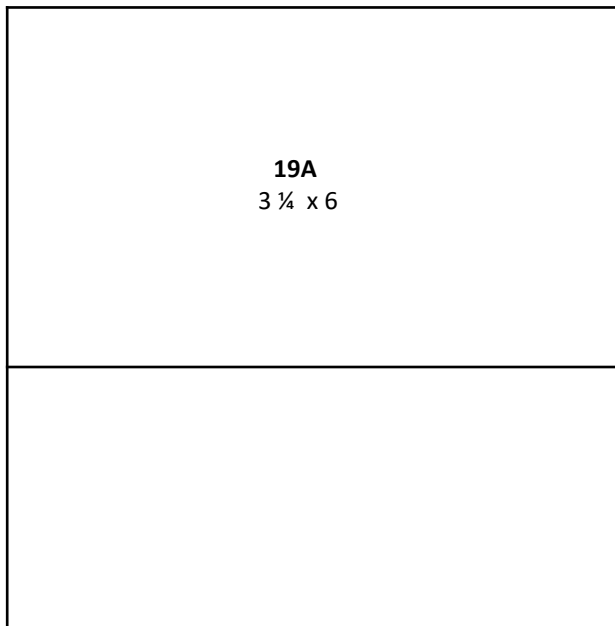
cut orientation



front



*back



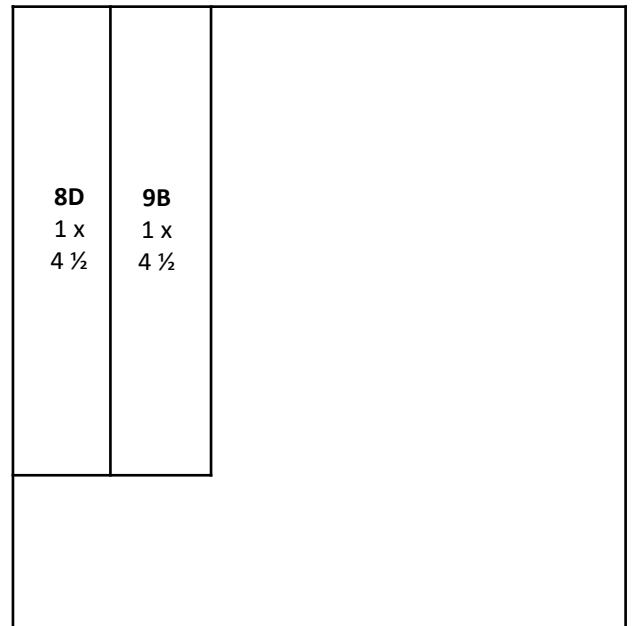
cut orientation



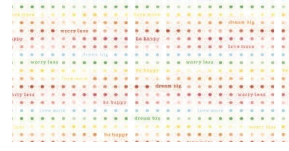
front



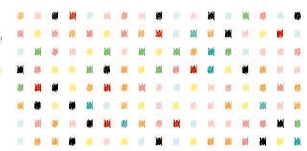
*back



cut orientation

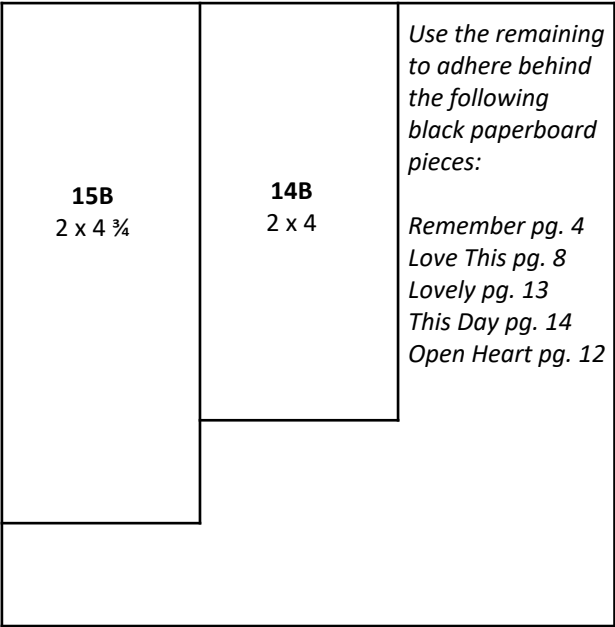


front

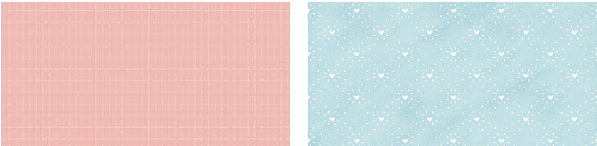


*back

Cutting Diagrams

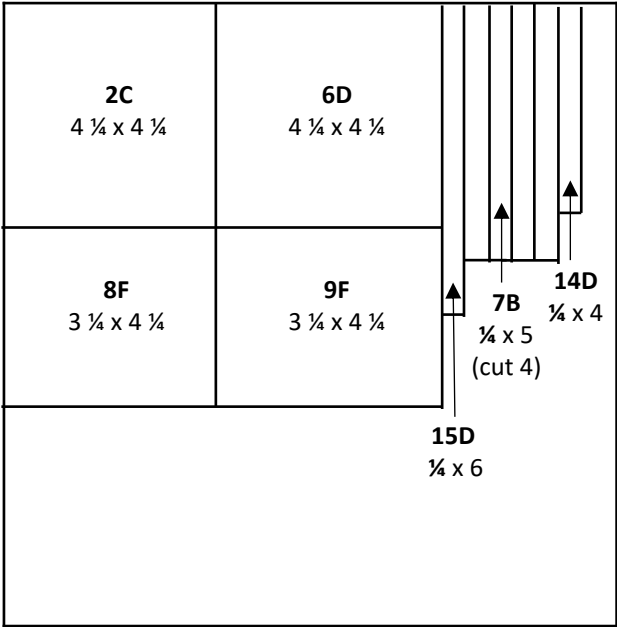


cut orientation

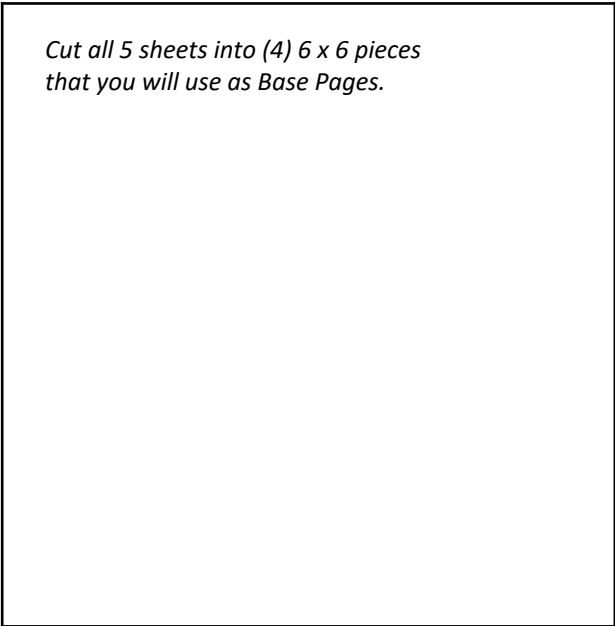


front

*back



Black Cardstock 12 x 12



White Daisy Cardstock 12 x 12

Stamp Set



Use the following stamps with Black ink:

- Journaling Lines pages 4 and 10
- Scalloped Border pages 12 & 13
- Dotted Border pages 6, 7, 8, 9, 10, 11, 16, 17, and 18

Feel free to use the remaining stamps in the areas that fit in your book to personalize it to your needs!

Page 1



- Dovetail all 6 strips. **TIP:** Layer them together to make the center cut. You will then make sure that you have even dovetails. Remember this tip throughout the book.
- Place the first strip 1½" from left edge and ½" from the top. Follow with the remaining strips.
- Adhere the photo mat 5/8" from the left edge and 1¼" from the top.
- **TIP:** When matting your photos on designed paper, it's nice to print them with a border so that they stand out.

- Finish with suggested embellishments or create your own arrangement! Use thin 3-D foam tape where desired, and don't forget to add the splatter paper behind the paperboard embellishment.



LEFT PAGE

- Place the first strip ½" from left edge. Follow with the lagoon strip.
- Adhere the photo mat 1¼" from the left edge and ½" from the top.
- Place the paperboard frame over the focus of the photo and journal with white gel pen. This emphasizes the highlight of the photo while leaving some fun background behind.

RIGHT PAGE

- Place the photos 1½" from the top and follow by adding the strips above and below as shown.
- Make sure to add the splatter paper behind the "how cool" paperboard.

Embellish as suggested or use embellishments the way that work the best for your photos.



LEFT PAGE

- Adhere the photo to the page and follow with the half circle strip.
- Stamp one set of journaling lines ¼" from the right edge. Now, turn your block around so that the straight edge of the journaling lines will sit flush against the lines you have already stamped. **TIP:** By using a 2 x 3½ block, you will be able to see where you are lining up the stamp.
- Make sure to add the pink grid paper behind the "remember" paperboard.
- If you are using the black heart on the left page, add a white gel pen dash line on the left of the heart to add a little depth and interest.

RIGHT PAGE

- Adhere the half circle strip and follow with the photo. If desired, you can add (2) 3 x 4 photos instead of a 4 x 6.

Embellish as suggested or use embellishments the way that work the best for your photos.



LEFT PAGE

- Place the lagoon strip against the right edge. Follow by adding black strip to the left of the lagoon, and then the splatter piece against the black.
- Stamp the dotted border with black ink against the left of the splatter paper.
- Adhere the photo mat 1 3/8" from the left edge and 3/8" from the top.
- If you are using the black heart on the left page, add a white gel pen dash line on the left of the heart to add a little depth.

RIGHT PAGE

- Place the photos against the bottom edge and follow by adding the lagoon strip above.
- Stamp the dotted border with black ink above the lagoon paper.
- Add the journaling lines in an uneven pattern and journal with white gel pen.

Embellish as suggested or use embellishments the way that work the best for your photos.



LEFT PAGE

- Place the first strip $\frac{3}{4}$ " from left edge.
- Adhere the last strip $\frac{1}{2}$ " from the right edge, and then fill in the middle strips overlapping as necessary.
- Stamp the dotted border with black ink against the left of the splatter paper starting at the bottom. **TIP:** If you are stamping when a border ends on the page, always start at that point and stamp toward the edge of the paper.
- Add the photo mat 1" from the left edge and $\frac{1}{2}$ " from the top.
- Make sure to add the pink grid paper behind the "love this" paperboard.

RIGHT PAGE

- Place the first strip $\frac{1}{2}$ " from the left edge.
- Adhere the last strip $\frac{3}{4}$ " from the right edge and then fill in the middle strips.
- Stamp the dotted border with black ink against the right of the splatter paper starting at the bottom.
- Add the photo mat 1" from the right edge and $\frac{1}{2}$ " from the top.
- If you are using the black heart on the left page, add a white gel pen dash line on the left of the heart to add a little depth.

Embellish as suggested or use embellishments the way that work the best for your photos.



LEFT PAGE

- Place the first strip 3/8" from left edge. Follow with the lagoon strip.
- Stamp the dotted border with black ink against the left of the sundance paper.
- Stamp one set of journaling lines next to the lagoon paper and 1/4" from the bottom.
- Adhere the photo mat 1/2" from the right edge and 1/2" from the top.
- Make sure to add the raspberry lined paper behind the open heart paperboard.
- **TIP:** When making an embellishment cluster, place the large part of the cluster on a small piece of thin 3-D foam tape, and then tuck the other embellishments close and underneath.

RIGHT PAGE

- Place the photos 1" from the left edge and follow by adding the strips on the sides as shown.
- Stamp the dotted border on the outsides of the sundance strips.
- Use thin 3-D foam tape on the flower.

Embellish as suggested or use embellishments the way that work the best for your photos.



LEFT PAGE

- Place a 4 x 6 photo (or two 3 x 4 photos) against the right edge.
- Follow by adding the sundance and black strips.
- Stamp the scalloped border with black ink against the left of the black paper.
- Make sure to add the pink grid paper behind the open heart paperboard.
- Adhere the flower with the thin-D foam tape to form a cluster.

RIGHT PAGE

- Place a 4 x 6 photo (or two 3 x 4 photos) against the left edge.
- Follow by adding the sundance and black strips.
- Stamp the scalloped border with black ink against the right of the black paper.
- Make sure to add the pink grid paper behind the “lovely” paperboard.

Embellish as suggested or use embellishments the way that work the best for your photos.



LEFT PAGE

- Place the black and white dotted paper against the bottom and right edge of the base.
- Follow by adhering the pink grid paper against the bottom and next to the black and white dot paper.
- Add a 3 x 4 photo. Place the black cardstock strip directly below the photo and on top of the pink grid paper.
- The printed black paper is placed above the photo as shown.
- Make sure to add the pink grid paper behind the “this day” paperboard.
- **TIP:** Add the flower sticker with thin 3-D foam tape to give it a little lift.

RIGHT PAGE

- Place the black and white dotted paper against the bottom and left edge of the base.
- Follow by adhering the pink grid paper against the bottom and next to the black and white dot paper.
- Add two 3 x 3 photos. Place the black cardstock strip directly below the photo and on top of the black and white dots and pink grid paper.
- The printed black paper is placed above the photos as shown.
- **TIP:** When a paper has gridlines, it’s easy to journal directly on the paper.

Embellish as suggested or use embellishments the way that work the best for your photos.



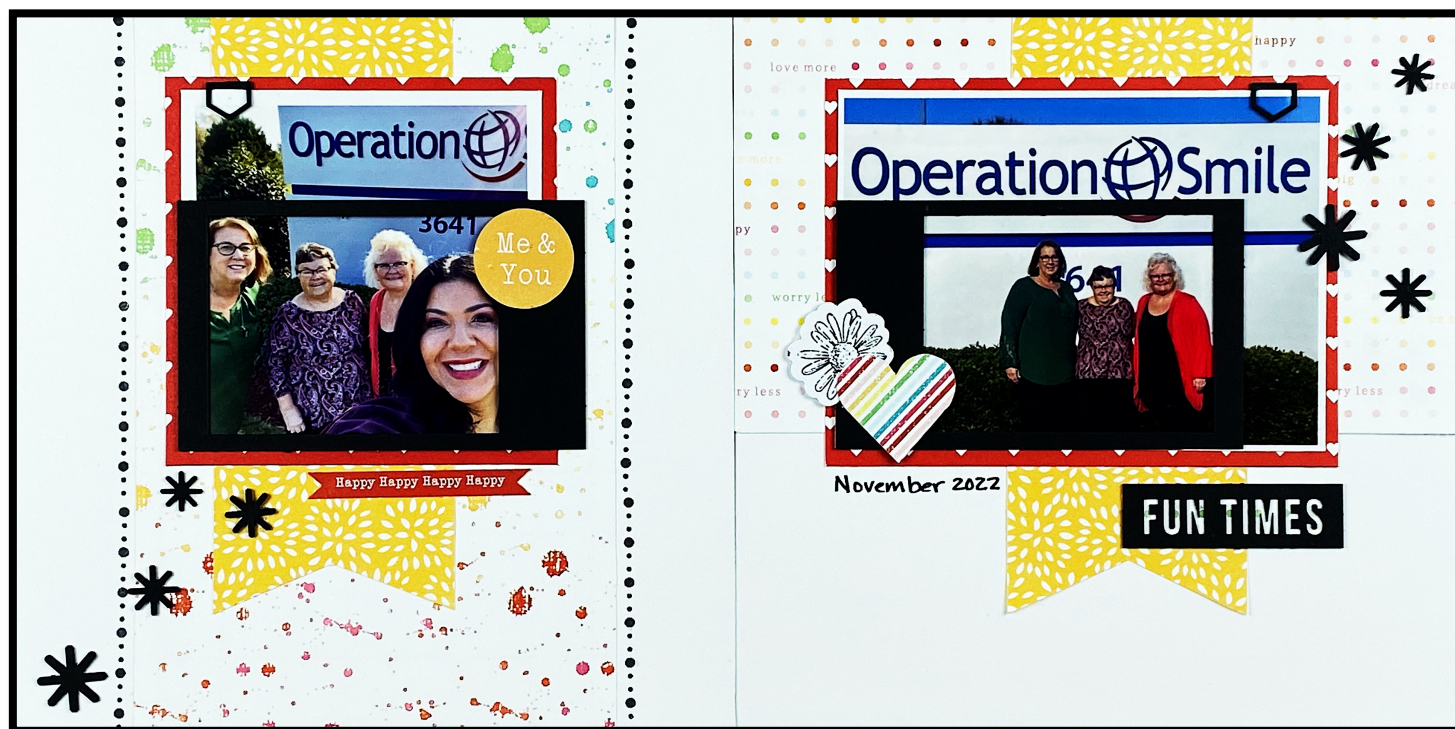
LEFT PAGE

- Place a 4 x 6 photo (or two 3 x 4 photos) against the right edge.
- Follow by adding the splatter strip.
- Dovetail the black border sticker and adhere next to the splatter paper.
- Dovetail the bold stripe paper and place on the splatter paper slightly overlapping the black border strip.
- Stamp the dotted border with black ink against the left of the border sticker. Start and the bottom and stamp toward the top edge.

RIGHT PAGE

- Place two 3 x 4 photos (or one 4 x 6) against the left edge.
- Follow by adding the splatter strip.
- Dovetail the black border sticker and adhere next to the splatter paper.
- Dovetail the bold stripe paper and place on the splatter paper slightly overlapping the black border strip.
- Stamp the dotted border with black ink against the left of the border sticker. Start and the bottom and stamp toward the top edge.

Embellish as suggested or use embellishments the way that work the best for your photos.



LEFT PAGE

- Place the splatter paper 1" from left edge.
- Dovetail the sundance paper and place 1¼" from the left edge.
- Stamp the dotted border with black ink against the left and right of the splatter paper.
- Adhere the photo mat 1¼" from the left edge and ½" from the top.
- When you add the photo, place a paperboard clip on the top as shown.
- Place the paperboard frame sideways over the focus of the photo. The wide end of the frame should be on the right side. You can journal on this with a white gel pen.

RIGHT PAGE

- Place the dots/words paper against the top edge.
- Dovetail the sundance paper and place 1¼" from the right edge.
- Center the photo mat on the page and place ½" from the top.
- When you add the photo, place a paperboard clip on the top as shown.
- Place the paperboard frame sideways over the focus of the photo. The wide end of the frame should be on the left side. You can journal on this with a white gel pen.
- Make sure to add the splatter paper behind the "fun times" paperboard.
- The example has the date printed, but there is also a date stamp that you can use.

Embellish as suggested or use embellishments the way that work the best for your photos.



- Adhere the 4 x 6 photo (or two 3 x 4 photos) against the top of the page.
- Place the heart paper below the photo.
- Add the black grid strip ¼" below the photo.
- Next, add the SMILE stickers. **TIP:** When you are adding letters, start at the end of the word. You start these ¼" from the right edge and against the top of the grid paper.
- The flower embellishment is fussy cut from the floral paper. Adhere with thin 3-D foam tape.