

Hello Baby

12 CARDS

Use the exclusive stamp set to create any of these options (enough supplies to make 12 cards total, 6 of each project)

PROJECT 1: MAKE 6



(Project 1 option)



PROJECT 2: MAKE 6



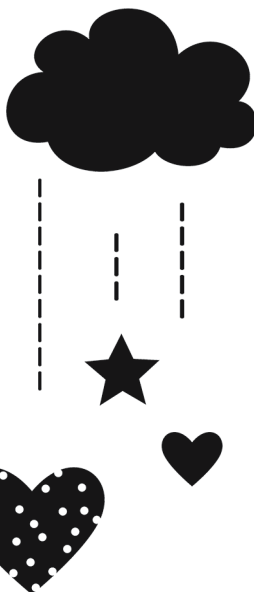
(Project 2 option)



ADDITIONAL MATERIALS NEEDED

- Z2813 Sea Glass Exclusive Inks™ Stamp Pad
- Z2864 Sorbet Exclusive Inks™ Stamp Pad
- Z2872 Whisper Exclusive Inks™ Stamp Pad
- Z2060 Thin 3-D Foam Tape

EXCLUSIVE STAMP SET:



CONGRATS

ON YOUR

GIRL

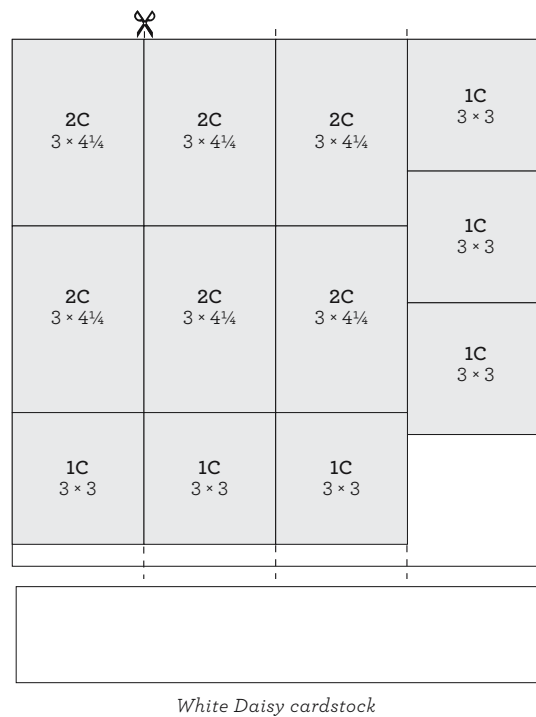
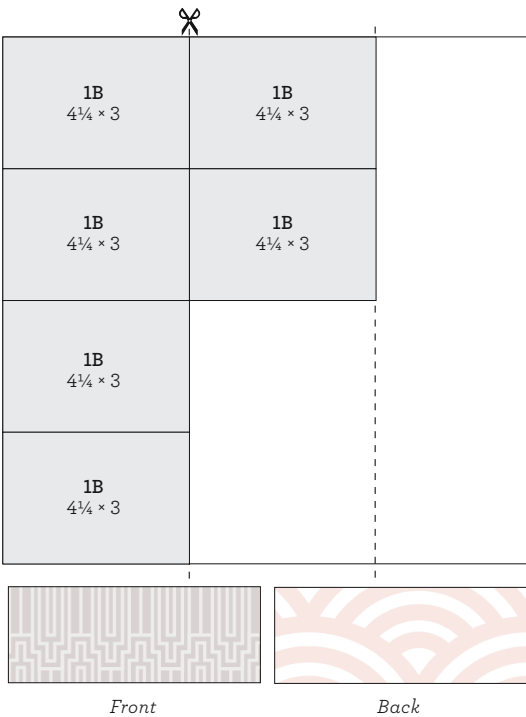
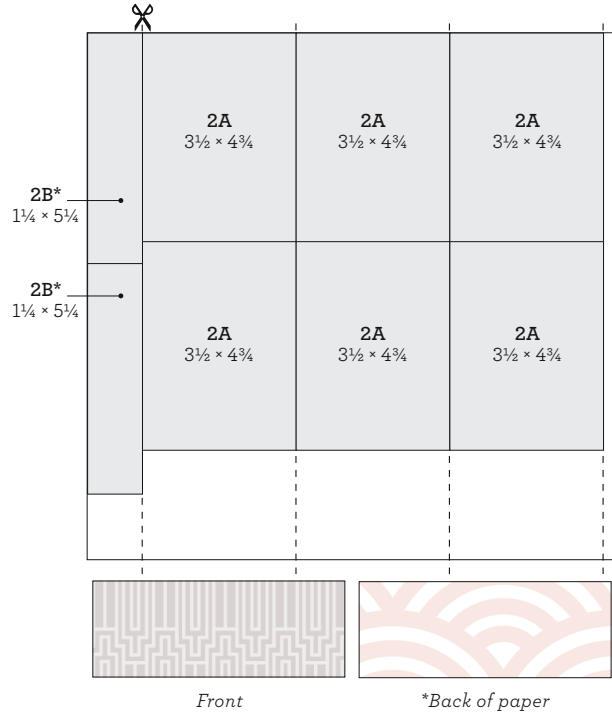
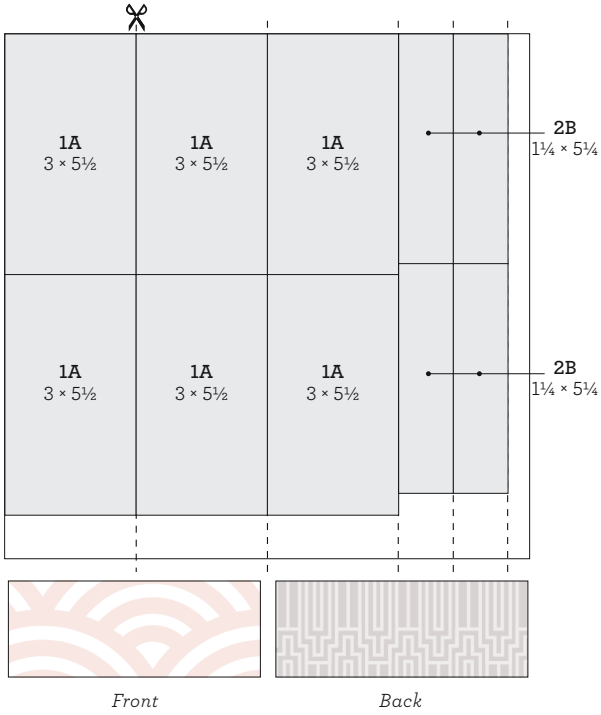
BABY

BOY



CUTTING DIAGRAMS

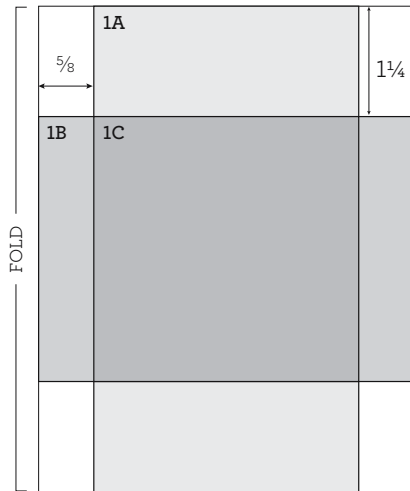
1. Remove all zip strips
2. Follow cutting diagrams shown below (all dimensions are in inches; first cuts indicated by scissors)



ASSEMBLE

1. Assemble your 12 cards as desired using the patterns and options as guides
2. For additional variations, interchange stamped sentiments and ink colors or use other side of paper

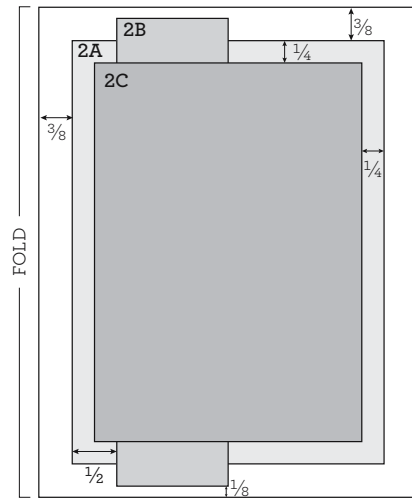
PROJECT 1: VERTICAL 4¼ × 5½ CARD (MAKE 6)



TIPS

- Attach ribbon to 1B before attaching 1C
- Using Sea Glass and Whisper inks, stamp banner and bow images along top of 1C
- Using Whisper ink, stamp "Hello" sentiment in center of 1C
- Using Sea Glass ink, stamping long dashed line repeatedly along bottom of 1C
- Using Sorbet ink and second generation technique, stamp large heart image onto White Daisy cardstock; using Sorbet ink, stamp small heart image in center; trim and attach using thin 3-D foam tape if desired
- Embellish card with ribbon and enamel gems as desired

PROJECT 2: VERTICAL 4¼ × 5½ CARD (MAKE 6)



TIPS

- Using Sea Glass ink, stamp cloud image in top left corner of 2C
- Using Whisper ink, stamp dashed lines, "Congrats" sentiment, and "On Your" sentiment underneath cloud, connecting pieces as desired
- Using Sorbet ink and the second generation technique, stamp star images onto 2C, connecting to dashed lines
- Using Sorbet ink, stamp "Baby" and "Girl" sentiments on bottom of 2C
- Attach ribbon to 2B before attaching 2C
- Embellish card with enamel gems as desired